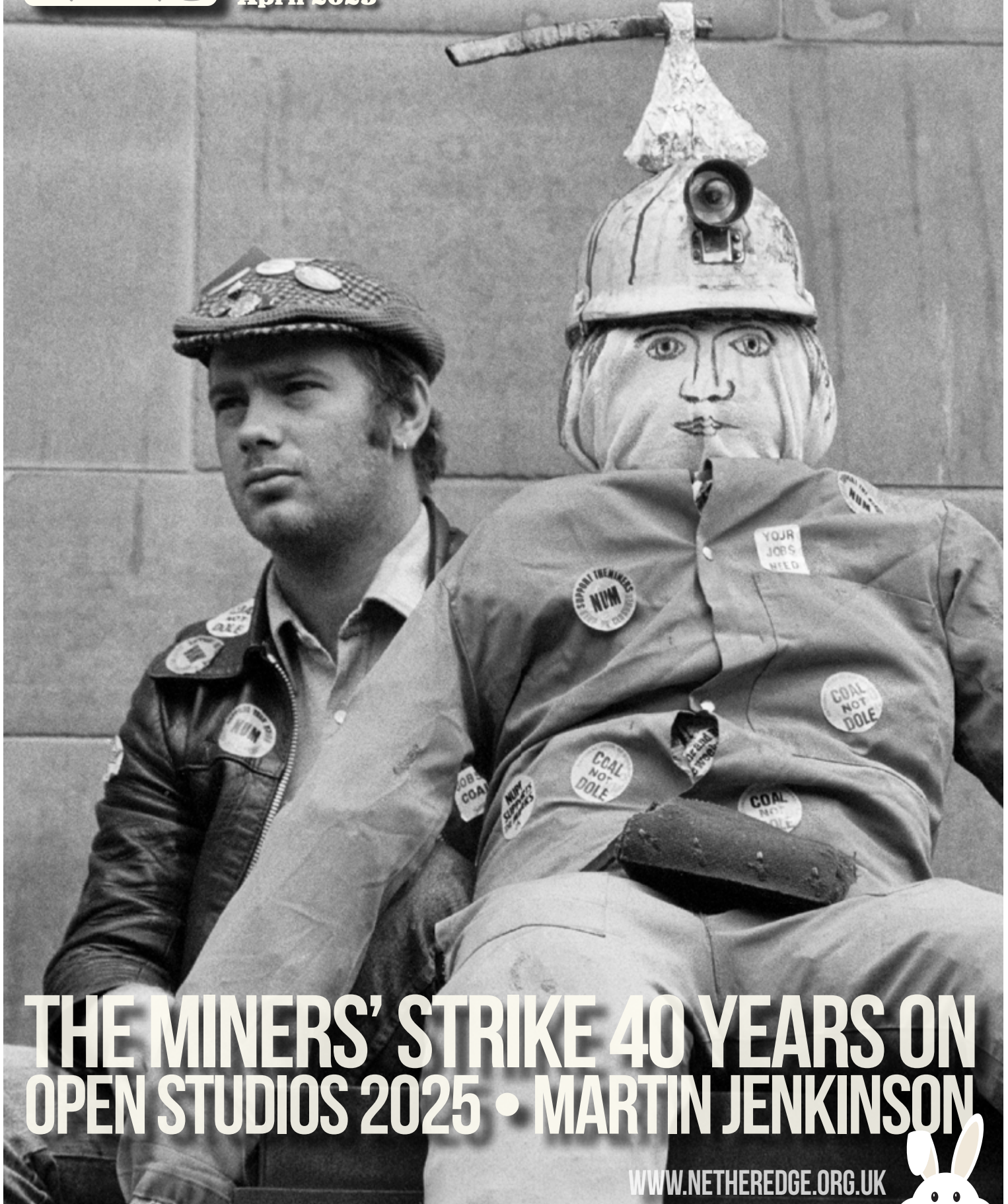




EDGE

Nether Edge Neighbourhood Newsletter
April 2025



THE MINERS' STRIKE 40 YEARS ON
OPEN STUDIOS 2025 • MARTIN JENKINSON

WWW.ETHEREDGE.ORG.UK





The Nether Edge Neighbourhood Group
was set up in 1973 with the following aims:

To improve the conditions of life especially of those living or working in the areas of Brincliffe, Nether Edge and Sharrow in Sheffield, without distinction of sex or race, or of political, religious or other opinions, by associating with local authorities, voluntary organisations and residents in a common effort to advance our education, to improve the environment and to provide facilities in the interest of social welfare for recreation and leisure time activities.

Company limited by guarantee No. 07414080.
Registered charity no 1139239

**Individual views expressed are
not necessarily those of the group**

EDGE APRIL 2025

This issue of EDGE was edited by the Edge Editorial Board

Design & artwork: Stephen Houfe (stephenhoufe@gmail.com)

If you want to contribute to the May edition, please contact the EDGE Editorial Board – nengeditorialboard@gmail.com by 12th April at the latest



Cover photo: Yorkshire and Humberside Region TUC Day of Action in support of the miners. Sheffield, May 1984.

Above: NUM Special Delegate Conference - City Hall, Sheffield. April 1984.

Both photographs: © Martin Jenkinson Image Library

NENG Committee Members

* indicates Trustee / Director

* **Ken Lambert** (Chair, Company Secretary & Membership Secretary) 32 Thornsett Rd S7 1NB.
07518 118789 ken.lambert227@gmail.com

Ruth Bernard (Vice Chair & EDGE Editorial Board)

* **Howard Fry** (Market)
20 Chelsea Road S11 8BR. howard.fry@icloud.com

Pat Rogers (Minutes Secretary & EDGE Editorial Board)

* **Richard Taylor** (Treasurer)

* **Marion Gerson** (Market)

Nicky Erlen (EDGE Editorial Board)

Kevin Hickey (EDGE Editorial Board)

Stephen Houfe (EDGE Editorial Board)

Kate West (Family Voice)

Kate Carruthers Thomas

Chris Hill

Faith Salih (Our Shared Streets)

James Almond (Our Shared Streets)

Helen Ryall (Friends of Chelsea Park)

Sue Chantler (Friends of Chelsea Park)

To contact individual members of the committee or for contact details of the various sub-groups, please go to the NENG website :
www.netheredge.org.uk/

EDITORIAL

Nicky Erlen

In this issue we look back at the Miners' Strike which, incredible as it may seem took place forty years ago, as experienced by some Nether Edge residents. We are delighted to have received permission from the daughter of the late Martin Jenkinson, who lived in Nether Edge, to reproduce a number of his remarkable images of the Strike.

We celebrate our local artists and encourage you to visit their studios and exhibition spaces during the Open Up Sheffield event that takes place, city wide, on 3rd-5th and 10th-11th May. But before that, why not show your support of a Nether Edge local enterprise by having lunch at Ammi's kitchen and /or attending the Nepalese curry night which is to take place on Saturday 26th April, both at Common Ground.

As many of you have concerns about the facilities and services in Nether Edge, you may wish to contribute to the Your Future South Sheffield questionnaire, the results of which will be used to develop a new South Local Area Committee Plan which will be agreed by local councillors at a public meeting in June.

If our last edition piqued your interest in volunteering, we have contributions from two organisations which might offer you roles that are right up your street.

In our History Group features this month we look at the lives of two women who were near neighbours, albeit a few years years distant in time, but whose status and opportunities were worlds apart. These articles demonstrate what a fascinating and diverse place Nether Edge has always been, so do find out more by joining the History Group Walk on Thursday 24th April.

One of the facets of Nether Edge that we wish to explore in our next edition is its reputation as a hotbed of climbers and other outdoorsy folk. If you are one of them, then please get in touch as we would love to hear your stories.

As ever, we welcome all your contributions on any topic of interest to the residents of Nether Edge.

We always welcome new members, whether you want to catch up with local news, get involved in any of our groups, or just support our work. Membership costs £10 per year and you will receive ten editions of The Edge - the NENG newsletter.

For further details email ken.lambert227@gmail.com, visit our website www.netheredge.org.uk or scan this QR code



NEWS

ASHLAND ROAD AND GLEN ROAD

Work on the property at the junction of Ashland Road and Glen Road is developing well. In time there will be a pair of semi-detached houses with driveways. The original house had bats so Natural England were involved and various stipulations were made before building work could begin. Mr Campbell, the proprietor, says that he has been careful to adhere to these conditions and bat boxes have been put up on the remaining wall. Stone from the original house is being repurposed and matching stone will be used for the rest. Work is scheduled to finish in early autumn.

GREAT BRITISH SPRING CLEAN

Message from Sheffield City Council

The sun is out, temperatures are starting to rise and the daffodils and snowdrops are starting to bloom - so what better time to enjoy the great outdoors?

The Great British Spring Clean, run by Keep Britain Tidy, starts later this month and is urging everyone to Love Where They Live by paying attention to, and taking care of their local environment.

We have a fabulous litter picking network here in Sheffield but did you know you can borrow litter picking equipment from one of the many libraries in the city?

This equipment includes litter pickers, plastic bags and disposable gloves so we can all do our bit to keep our little part of the city clean and tidy. Equipment is available from Ecclesall, Highfield and Central Libraries



LETTERS

EMAIL: NENGEDITORIALBOARD@GMAIL.COM

This is part of a letter sent to us by Bill Schiffman of London Road. Do you have any views about our library services, whether they should be improved and what steps could be taken to effect improvements? If so, please let us know.

Dear Editor,

Nether Edge ward needs change at the next local election. Libraries are a fine example of inaction from the local councillors - libraries provide for sharing of resources so investment in them is key for any Green new deal. Nether Edge and Sharrow Green party councillors past and present have failed to even mention them let alone campaign for them. This is notable as it is something the local councillors are in a position to be able to influence on a local level.

To refresh the local councillors' memory, between 2014 and 2016 Sheffield Libraries handed the majority of its branch libraries to be run by charities with volunteers in an act very much in keeping with David Cameron's "Big Society" concept. Green and Labour councillors support volunteer libraries, thereby celebrating Tory localism!

Yours faithfully
Bill Schiffman

INTRODUCING A NEW COMMITTEE MEMBER - FAITH SALIH



I was "persuaded" to move to Sheffield from Bristol in 2011 after my husband got the opportunity for a 'run through' training job in Orthopaedics with the Sheffield

Teaching Hospitals NHS Trust. I was a proper Southerner and having grown up in Dorset by the coast I didn't much want to come, but the promise of knowing we could live in the same place for at least the time the children were at junior school won me over.

I was an employment solicitor for a Bristol law firm at the time and was presented with John Lewis vouchers when I left, only for my boss to say "wait, do they even have a John Lewis in Sheffield?!" That didn't augur well!!

My transition to the North was full of blunders. When looking for a house, I asked the owner's young son who was wearing a striped red and

white kit who he supported. When he said United I followed up with 'Manchester United?'. We were lucky enough to stumble on a house in Greystones without any knowledge of where was good to live but I offended the local chippie on the first visit by asking what breadcakes were. I asked for the Hallamshire hospital on the bus and the driver raised his eyebrows at my distinctive 'H's. But then he called me 'duck' and I was really offended. Fast forward to today and if someone doesn't call me love or duck I feel like I must have done something wrong.

We spent ten years in Greystones and before we realised, Sheffield was home. The friendly people, the beautiful outdoors and easy access to nature, the amazing beaches... (well, ok, you can't have everything). Our third child was born here and is the only true Sheffielder among us but we'd find it hard to live anywhere else now.

We moved to Nether Edge a few years ago just as our older two went off to uni. Our removal lorry managed to break down in the half mile journey across Ecclesall Road which could have been a bad omen, but we'd been in the new house less

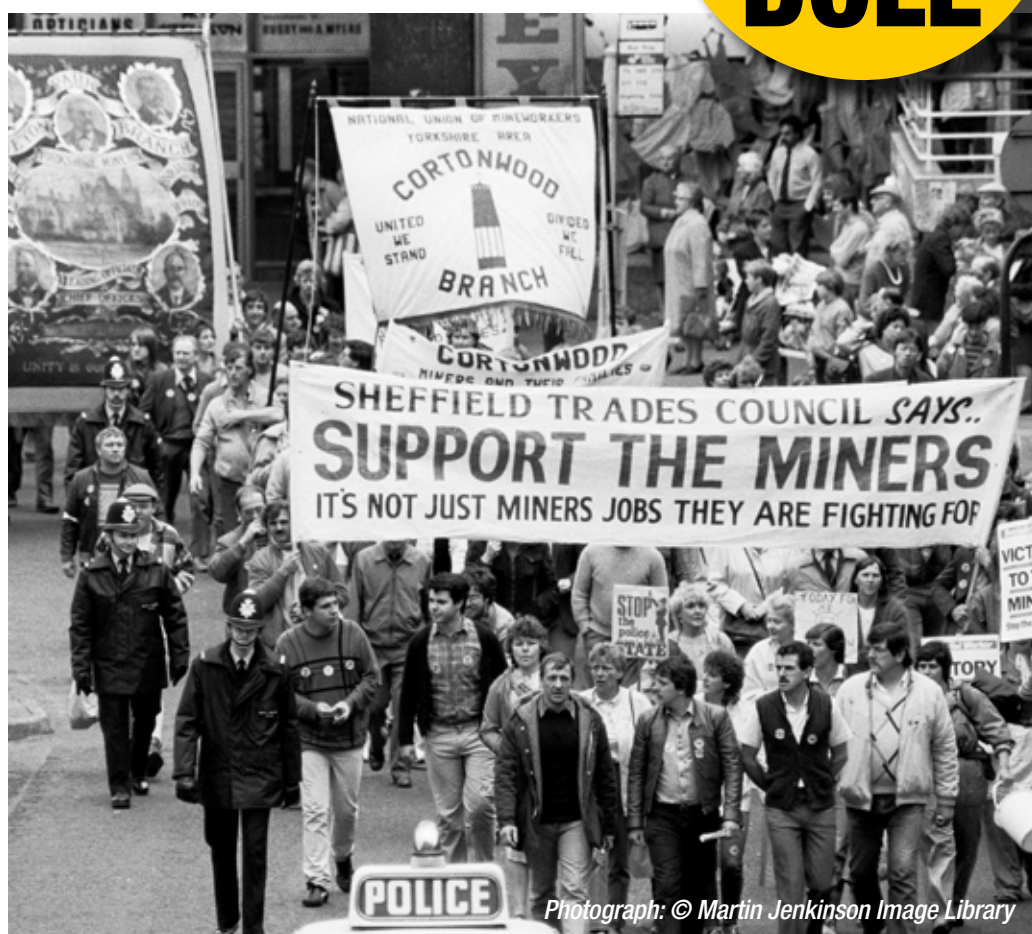
than 24 hours and the neighbours had invited us round for cake. It's such a privilege to live in a such a green and friendly community. As we are so close to the city centre and the Peaks and have lots of amenities nearby, we've found that it's possible to walk, run and cycle to lots of places, even with the hills. We do drive too, but we've also felt that it's become scarier and more dangerous for people outside of cars on local roads over the years. When I attended the initial 'Safer Roads' meeting I felt that this was something I could get involved in and try to give back to my community. It's still early days for the new NENG Our Shared Streets sub-group, but James and I will be co-chairing with the primary aim of improving the experience of living here and the way we move around our community and looking at positive ways of addressing some of the issues such as traffic, speeding and pavement parking that people have told us make it difficult for them. We have also been welcomed on to the NENG committee and look forward to supporting the work of NENG more widely too.

Faith Salih

FORTY YEARS ON FROM THE MINERS' STRIKE



On Saturday 5th April at the Victoria Hall in Sheffield there will be a performance of A Northern Requiem composed by Jonathan Francis, the grandson of a miner, to commemorate the 40th Anniversary of the Miners Strike. For those who are too young to remember, the strike started on 6th March 1984 with a walk out at Cortonwood Colliery. The NUM President, Arthur Scargill, made the strike official on 12th March, but the lack of a national ballot beforehand caused controversy. In some areas there was total observance of the strike whereas in others some continued to work causing hostility between family members and neighbours. The strike finally ended on 3rd March 1985. The impact of the Strike and the subsequent closure of the pits on the communities involved was devastating and long lasting. One might ask how the Strike impacted on those who now live in the leafy suburbs of Sheffield, but as can be seen from the articles below from three Nether Edge residents who had no knowledge of each other at the time but are now neighbours, they became drawn in for different reasons and were left with disturbing memories.



Photograph: © Martin Jenkinson Image Library

THE BATTLE OF ORGREAVE

Martin Harvey

In March 1984, the National Union of Mineworkers (NUM) launched a strike with the aim of "Coal NOT Dole" but because there was no national ballot, the strike split the union, mining communities and public opinion. Striking miners could not claim state benefits for themselves, and their families' entitlements were severely curtailed leading to substantial financial hardship. In Nether Edge there was a constant campaign to raise money and food to donate to the Women Against Pit Closures, who organised and ran mining village kitchens. No one could have predicted that the strike would last 12 months or the level of violence. I was an Officer with the NUM and one of my tasks with a colleague was to video and record what was happening in the coalfields.

On 18 June there was a huge picket of miners at the Orgreave Coking Works just outside Sheffield. There were 5000 police officers from 18 constabularies with hundreds in riot gear under the supervision of South Yorkshire Police (SYP) and operationally by SYP Assistant Chief Constable Tony Clement. I saw police with batons assault pickets and numerous cavalry charges by SYP mounted police into crowds of standing miners. We recorded injured miners with blood pouring from the back of their heads. It was pandemonium and how no one died I do not know. It was extremely frightening but I was compelled to carry on in order to record the truth. Words alone cannot describe the scenes of violence which I witnessed. We kept on filming to a point where I thought we were going to get hurt. This day has become known as the Battle of Orgreave. The BBC reported that

the miners were extremely violent and that the police, in order to protect themselves, had no alternative but to respond to the "onslaught." Ninety five miners were arrested and seventy one were charged with riot and twenty four with violent disorder. I was involved in the trial at Sheffield Crown Court which collapsed when the prosecution withdrew the charges and subsequently SYP paid compensation for unlawful arrest and assault. Our footage has recently been found and used in an acclaimed documentary which for the first time shows what actually happened and is still available to watch on Channel 4; The Miners' Strike 1984, episode 2, The Battle of Orgreave, which was given Five Stars by The Times and described by the Daily Mail as "a powerful recalling of a defining year in British history through archive footage".

RIGHTING A WRONG

Adam Pemberton

For years Mr T, the owner of a coach hire business in South Yorkshire, had been accepting contracts from groups of miners to take them on trips all over the country.

When the strike started he carried Yorkshire miners who wished to picket, to wherever they chose to go.

When the Chief Constable of Nottingham announced that anyone who came to picket in Nottinghamshire would be arrested if they crossed the boundary of that county, Mr T asked me if that meant he risked arrest if he transported Yorkshire miners who planned to picket. I consulted with two experienced Sheffield criminal lawyers and we jointly took the view that arresting a coach driver carrying passengers who might commit a criminal offence at their destination, would be unlawful as it would clearly be unlawful to arrest a train driver carrying football supporters from London to Sheffield to watch a game of football, merely because some of them might commit a criminal offence after getting off the train.

For Mr T we wrote a letter stating our view of the law and warning the police that an arrest of Mr T merely because a police officer suspected that a passenger might commit an offence, would be unlawful. He carried this letter with him thereafter when transporting miners who planned to picket.

Inevitably there came a time when Mr.T delivered his passengers to a pit entrance and things went wrong. The miners got off his coach to picket. Mr T asked a policeman where he might park his coach before collecting his passengers and returning them to Yorkshire - as his contract with them required. The policeman refused to help, called a superior officer who then warned Mr. T that if he drove his coach a further inch forward he would be arrested. Mr T then produced his lawyer's letter which the officer read. Sadly the officer was unpersuaded!

Mr. T then drove his coach an inch further forward, was arrested, spent the night in a police cell and appeared before the local Magistrates Court the following morning. He pleaded not guilty and was bailed to appear for trial some months later with the standard restriction that he was not allowed to go within 200 metres of Coal Board property until the outcome of his trial.

For months before his trial Mr. T suffered stress and a massive reduction in his income as a result of this bail condition.

The day of his trial eventually came and I am pleased to say that our view of the law was accepted and he was acquitted. Not guilty of anything!

Then started Mr. T's claim against the police for compensation for wrongful arrest and loss of earnings - but that's another story altogether.



MARTIN JENKINSON

Martin Jenkinson lived in Nether Edge for 36 years, firstly at Sandford Grove Road and then Rundle Road. Martin was a former steelworker whose love of photography combined with his politics and his belief in social justice, fairness and equality. He was responsible for some of the most striking images to have emerged from political and industrial struggle in Britain over the last 30 years.

Martin captured steelworkers as they fought for survival and was the official photographer on the People's March for Jobs, in 1981. He was commissioned by the National Union of Mineworkers' newspapers the Miner and the Yorkshire Miner and was at the heart of the epic strike against pit closures of 1984-85.

His enduring images include the arrest of Arthur Scargill; the launch of the Women Against Pit Closures movement; and a smiling pit striker named Geordie Brealey wearing a toy policeman's helmet as he "inspects" battalions of police officers lined up against pickets at Orgreave coke works.

He was commissioned by many other unions, notably the National Union of Teachers, to cover their conferences, galas and other events. An active member of the National Union of Journalists, he served on its National Executive Committee.

Martin also captured imaginative and artistic images of people and their everyday lives and places from his travels.

After being made redundant as a maintenance fitter from Tinsley Wire in

1979, he served a year-long employment placement on a local newspaper. Photography had been his hobby in Cheltenham where he lived before moving to Sheffield in 1976; in Sheffield it became his profession as when the placement ended he turned freelance.

Martin's work appeared in many national newspapers. He was as proud of his portraits and artistic work as of his images of struggle. A photograph he took of Arthur Scargill being arrested was chosen for the National Portrait Gallery exhibition Faces of the Century in 1999.

In November 2018 Sheffield's Weston Park Museum hosted a highly successful exhibition, the first major retrospective of Martin's work called Who We Are which had over 50,000 visitors. It was a sometimes moving, sometimes humorous window onto the city's character, his insightful photographs of Sheffield and its people. The images that were on display included some of his most famous protest images as well as travel photography and more.

Martin Jenkinson Image Library has images from his industrial and political archive, and also from everyday life. The images are still being requested and used widely in publications, media and exhibitions. The library of images is now managed by his daughter Justine, who has added images from the archives, some previously never seen before. The library of images is available to view online at www.pressphotos.co.uk and prints of them can be ordered online via the website.



National Women's Rally, Barnsley Civic Hall, 12 May 1984
Photograph: © Martin Jenkinson Image Library

THE MINERS STRIKE 1984-5

OBSERVATIONS FROM THE SIDELINES

Kath Fry

Once upon a time Sheffield University ran an excellent course for mature students to enter for degree courses. It was for those who had 'missed the boat' from school to further education. It was a two year course, of one or two evenings a week taught by its own tutors and those already teaching degree courses. Classes were held at the Mature Matriculation offices in Wilkinson St and university venues. At that time the Coal Board sponsored miners to take advantage of this. I'm not sure such an opportunity now exists. I was one of those students and had opted for the social sciences module with economics and history as my main subjects. From miners on our course I gained a perspective of the Miners' Strike of 1984-5.

The media was full of the strike, and most coverage was against the miners. Every day one could see, from the offices opposite, emerging from West Bar police station huge numbers of police. This included many sent up from the Met in London to police the picket lines. They also stopped traffic on the roads and motorways to the pits to search cars for 'flying pickets'.

We had just a few miners on my particular courses but word spread round between us all. Being a 'southerner', the names of the pits and their locations didn't mean anything to me, and I regret that I didn't take more notice of names and places. Mining and its communities was a different world. A tutor was supporting some strikers and asked if I would like to meet some. They were in a community hall in Sheffield, I forget where but will

never forget their faces. One hears of people being ashen and grey; those were the faces of these men.

One miner told me that in his pit huge rolls of expensive co-axial cable were being delivered.

No-one had ordered them nor knew where they were to go. The suspicion was they were put there to show how unviable the pits were and not good value for money.

After a particularly difficult day of picketing a tutor went to court where so many miners ended up. He was shocked at the very overt biased comments from the bench.

My father was a train driver in London where the rail workers gave their support to the miners.

The Triple Alliance of the Mining Federation of Great Britain, the National Union of Railwaymen and the National Transport Workers Federation had a history going back to 1912. The feeling was there is no-one to help us but ourselves, and they were united by coal. At my dad's depot one chap had his hair dyed into a Union Jack and covered it with a headscarf. If anyone wanted a look they had to put money in the miners support tin, then the headscarf would be whipped off for a quick look before going back on again. Dad's union was the Associated Society of Locomotive Engineers and Firemen - ASLEF.



OPEN UP SHEFFIELD 2025

Open Up Sheffield takes place in and around Sheffield. We welcome visitors into our studios and workshops to meet and talk to artists about our work in progress or to buy individual pieces directly from us. This year we have 18 artists opening up in the Nether Edge, Brincliffe & Sharrow neighbourhood and we'd love to see you at the event!

It's free to visit on the 3rd, 4th, 5th and 10th, 11th May but do check open days for each artist as they may vary. Opening hours 11am to 5pm

Check our website for more information about the artists' profiles and where to get hold of our free brochure
<https://openupsheffield.co.uk>



Painting: Vanessa Bell

OPEN UP SHEFFIELD 2025



ANNA BUEHRING

29 Adelaide Road

My little black studio is purpose built and sits in my back garden. It's small but provides a lovely peaceful working space, especially in the summer with the birds singing and the garden blooming. I do my messy work in there making charcoal drawings, painting and gluing small handmade books. I'd love to see you in my studio during the May Bank Holiday weekend when my garden will be full of flowers, the studio crammed with preparatory work and my living room displaying books and paintings for sale. I also have a guest artist with me this year – Judith Webster.



JUDITH WEBSTER

29 Adelaide Road

I am happy to be sharing space with Anna Buehring in her living room and showing my work there from 3 – 5 May. Formerly a printmaker, I am now focusing on painting, drawing and collage, mainly landscape and still life.



JILL LAURISTON

39 Adelaide Road

I began making books a few years ago, and this year I am featuring this fascinating craft instead of the paintings and felt hats which I have shown at Open Studio events in the past. You will be able to see replicas of historic bindings from early Egyptian to medieval times as well as contemporary artist books on display in my little "Garden Room". You will also be able to see some of the simple equipment, materials and techniques I use to make them, as well learning something of the history and evolution of book binding.



PAUL STOCKLEY

2 Brincliffe Crescent

I'm an artist in Brincliffe, working mainly in concrete, and during 'Open Up Sheffield' you can visit my garden and wander along the sculpture trail I've made. I have many pieces to see, animals as well as abstract, plus, more recently, concrete based paintings so there is something for everyone. In creating my art I am influenced by the natural world as well as by the art of ancient cultures. Most pieces are for sale or I am happy to consider commissions also.

Visitors always say how much they enjoy visiting and many return each year so why not drop by for a warm welcome. I'm open whatever the weather!



MARION ANNISS, JASON HEPPENSTALL AND GINA HODGES

13 Clifford Road

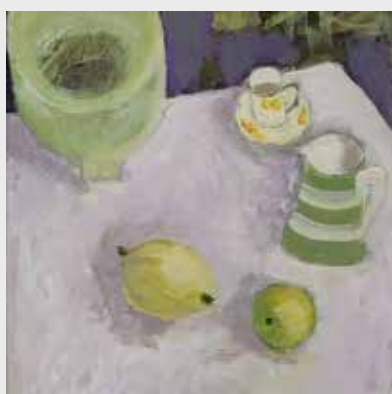
For easy access during Open Up everything has been set up downstairs and in the garden of my Edwardian house. You are welcome to linger and relax here on the seats and stone bench and enjoy the sound of running water as you look at Jason Heppenstall's recycled metal sculptures dotted around and in the Conservatory. Inside the house you will find my textile work, collagraph and lino prints and further down the hall and front room the colourful work of Gina Hodges, local mixed media artist and painter.



CHAPEL GALLERY ARTISTS

Anne Atkinson, Vanessa Bell, Pauline Calvert, Clare Hill, Marion Rout and Kath Williamson

The six artists will be exhibiting at the Old Chapel Gallery on the corner of Union Road and Osborne Road. Our work is inspired by nature, landscape and forms of everyday life. We work in a variety of mediums, formats and styles to respond to what we see and feel, so there will be plenty to see. If you're in Nether Edge the weekends of Open Up, do pop in. It would be lovely to see you!



Top:
Clare Hill,
Marion Rout,
Bottom:
Anne
Atkinson,
Kath
Williamson,
Pauline
Calvert



JON NICHOLL

13 Moncrieffe Rd

I work in silver, and all of the work on my pieces is carried out in my workshop in the garden of my house on Moncrieffe Rd in Nether Edge (in fact my Etsy shop is called 'S7Silver'). I make functional and decorative silver tableware and often use other materials such as wood and glass, and recycled ceramic and Blue John bowls, to create my designs which are modern in look but traditional in form. Open Up visitors are very welcome to come and see what I do, and chat about my work much of which will be on display

KATE COOKE CERAMICS

5 Brentwood Road

My pottery studio is in a small old washroom in the garden. I mostly make functional stoneware, thrown on a potter's wheel and fired twice in an electric kiln. I make it slowly in small batches and design the pottery intuitively. I hope that each piece can connect you to a slower way of being and the natural world that inspires the textures and glazes I use. I look forward to welcoming you May Bank Holiday and as well as work in progress I will have a selection of pottery for sale.

.....

MJ CLAY

49 Milton Road

Cups. We've all got one, haven't we? How else would we transfer liquids to our mouths? I use cups in my shed (to drink). I make cups in my shed (out of clay). I make other stuff, too. Buttons. Plates. Candle holders. "Toblerone Woman of The Year Award" trophies. You know, just the usual sorts of things. Come and visit me. It might be nice. Hang about for a chat, eat two or three crisps, maybe accept a tiny glass of wine, have a little go on the pottery wheel. You could even buy something made out of clay. It's all got to end up somewhere, after all.

.....

Continued overleaf

OPEN UP SHEFFIELD CONTINUED

ALFREDA REYNOLDS

64 Edgedale Road

During the May Day long weekend, I turn over a good part of my house space - living room plus hall and staircase wall areas - to displaying fine art black and white photographic prints.

Creating in monochrome encourages me to step away from reality and explore subjects in unexpected and unpredictable ways.

By nature I'm a photographer of things rather than people. Among the techniques I use are long exposures, camera movement and infrared imagery.

There'll be plenty of pieces for sale - framed and unframed prints - plus greeting cards.



PETER BENNION

**Silk Road
Gallery, 364b
Sharrowvale
Road,**

I photograph the water gathering architecture of the desert landscapes of Rajasthan, and monasteries, landscape and culture of the

Buddhist Himalaya in Ladakh and Tibet. In a world that is being rapidly covered with concrete I want to share these beautiful architectural forms before they disappear. They are a source of wonder & inspiration. I prefer to keep the images fairly formal and show them as they're seen through the lens - they don't really need any help from me. I welcome you to come and see my photographs in the Silk Road Gallery which is to be found down the cobbled lane behind Porter Pets.



**Final farewells
in familiar places**



Pets at Rest home euthanasia vet

I'm Rob, a local vet and resident of Nether Edge. You might see me out and about in my electric car, visiting pet owners in our community. I run an independent business that comes to your home to support with end of life care. Saying goodbye at home, ensures your companion feels safe and calm, surrounded by loved ones.

You can find out more on my website or by using the QR code to visit my Facebook page.



07866 243673

www.petsatrestvet.com



Bannerdale Osteopaths

Happy Paiteni

Google Review

I presented myself with painful feet after long walks. Not content to accept that it was a natural part of getting older, I am delighted to report that Pooja Guria set me on a path to a pretty speedy improvement within 5 sessions and one of those was taken up with a pulled back muscle (oh the relief!)

I like the app they use and did the homework Pooja set me (still do though not as often, and after 2 months was back to walking 15 miles across the Peaks without pain.

★★★★★

ST LUKE'S

VOLUNTEERING OPPORTUNITIES FOR EVERYONE



We couldn't do what we do without our fabulous volunteers. We are always looking for support in our busy shops and Donation Centre to help turn pre-loved donations into funds for our patient care.

We offer a huge variety of opportunities in our shops, everything from processing our donations, serving customers on the till, visual merchandising and much more. Our shifts are really flexible to fit in with your availability and are usually 3-4 hours once a week.

We also have events throughout the year. These are perfect for those who don't have as much regular free time or want to try something new. From marshalling at the Sheffield Half Marathon to supporting our collections around Sheffield, there is a role for everyone.

We regularly welcome corporate groups looking for a rewarding team-building experience. Corporate volunteers can help in our 15 charity shops across Sheffield or take part in fundraising activities as a Team. Our group days offer a fantastic way to engage your team while giving back to the community.

Who Can Volunteer?

Anyone can give volunteering a go. Our volunteers in retail can join from age 14 and no previous experience is needed. It benefits not only St Luke's, but you as the volunteer. We will provide any training needed for your role, along with guidance, support and cups of tea along the way!

Volunteers often tell us how much they enjoy being part of the St Luke's Team, many highlight the friendly atmosphere, the chance to meet new people, gain new skills and the satisfaction of knowing they are helping to make a difference.

One of our volunteers at The Moor shop

said; "I've made so many friends here and it's a great feeling that they understand me, I can have a proper laugh with them all and I feel like I am part of the team."

"You just need to come and do it – every day is a new day and every day you learn something new, skills that you can take forward with you wherever you go," he says.

Be Part of Something Big with St Luke's Hospice!

At St Luke's Hospice, we are thrilled to launch our "Be Part of Something Big" campaign, running from 4th May to 8th June, and we are inviting you to get involved! Whether you are looking for a one-off experience, taster session, a regular volunteering role, or a corporate team-building day, there are so many ways to make a difference. Keep an eye on our website and socials in the coming weeks...

A Hidden Gem: The Nether Edge Shop

Our Nether Edge shop is a hidden gem, well-known for its high-end fashion donations. We allocate our pre-loved designer labels and high-quality pieces here because of the shop's boutique feel and the area's appreciation for sustainable fashion. Over the years, we've had some amazing finds; from vintage couture pieces to high-end handbags, all helping to raise funds for hospice care.

Get Involved!

If you'd like to learn more about our volunteering opportunities or sign up for our "Be Part of Something Big" campaign, please visit our website at: Volunteer opportunities

Contact our volunteer team at volunteer@hospicesheffield.co.uk or call Leah Johnson 0114 2357639

We'd love for you to join us and make a difference in Sheffield; you really can Be Part of Something Big!

Scan here to volunteer!



At SAVTE, we help speakers of other languages develop essential English skills and confidence, enabling them to become active and empowered members of their communities. We create inclusive opportunities for people to share, learn, and grow together.

Volunteering is at the heart of what we do. We recruit, train, and support volunteers from all backgrounds, including ESOL learners, to provide English language support in homes and community settings. Our approach fosters self-reliance, confidence, and greater community engagement while offering volunteers valuable skills.

We offer various learning opportunities, including an ESOL English class at Sharrow Community Centre, the next class starting on April 23rd, and an ongoing women-only conversation group at Common Ground Community Centre, Machon Bank, for women who want to practice and improve their English language skills.

For those interested in volunteering, our 1-1 English support training course begins on May 6th.

By removing barriers to learning, we empower individuals to connect with their communities, access services, and gain independence. If you want to get involved as a learner or a volunteer, we'd love to hear from you!

For more information, visit www.savte.org.uk or follow us on Facebook!



Language Support Volunteer Training

Help someone in your community to learn English

No previous teaching experience is needed.

Six weekly sessions starting

Tuesdays 6th May

10.00 am - 13.00 noon

6th May, 13th May,

20th May,

3rd June, 10th June

Final session 17th June 2025

at

The Snowdrop Building

Castle Green, Castle

Street, S3 8LT



To apply Please visit our website or scan the QR code



SAVTE
www.savte.org.uk
Sheffield Association for the Voluntary Teaching of English



BY THE GARDEN GATE...

John Baxendale

October 1878. Arthur Benn and Annie Clough are neighbours. Annie lives on Adelaide Road, Arthur round the corner on Edgehill Road. Out for an autumnal evening stroll, Arthur encounters Annie at her garden gate. They chat, they meet again, and again, and as the Sheffield Independent put it, 'the result of this intimacy was that [Annie] gave birth to a child'. But there are social complications. Arthur (21) is the youngest son of a table-knife manufacturer, working as a clerk in his father's business. Annie (19) is the daughter of a scythe-grinder from rural Eckington, and now a housemaid for the manufacturer Henry Smith – one of many teenage servant girls in Victorian Nether Edge, living in attic rooms, away from home and vulnerable. So, is this young love, or a sexual predator and his prey?

Young love doesn't usually end up in court, where Annie went in June 1880 to claim maintenance for her child. Young love doesn't usually deny everything, as Arthur did – he'd never met the girl, and anyway he was out of town at the time. No DNA in those days, but the magistrates believed Annie, and awarded her four shillings a week until the child's 14th birthday. Arthur said he would appeal, but he didn't.

What he did do was go off to Bridlington, just a few weeks after the court case, with Clara, daughter of the wealthy steel manufacturer Charles Wardlow, and here the pair got married. An elopement? It seems likely; Wardlow was a prominent Methodist lay preacher, Chairman of both the Sheffield Temperance Association and the Sheffield Anti-Tobacco League. After the court case he would hardly approve of Arthur as a prospective son-in-law; a fait accompli may have seemed the best plan.

Clara and Arthur went on to have five children, Arthur working as a clerk and a commercial traveller before dying in 1899 aged only 42. In due course Clara remarried a Bradford worsted manufacturer, was widowed again, moved with her children into a big house in Southport not far from the beach, and finally ended up in Cheltenham, another resting place for wealthy retirees, where she died in 1923, having always 'lived on her own means'. Her father left the equivalent of £10m – some of that surely came her way.

But what of the child? Matilda Annie, called after her mother and grandmother, was born in July 1879 and baptised back home in Ridgeway Moor, where she went to live with her grandparents while Annie briefly went back into service, then married a railway foreman in Melton Mowbray, who adopted Matilda. In due course Matilda also went into service, married a railwayman and went to live at Nuneaton, where she had two children. Annie died in 1928, Matilda in 1962. Life after the garden gate could have been worse.

HISTORY GROUP GUIDED WALK

...around the Nether Edge shops and beyond. Thurs 24 April, 10am.
Meet at the pocket park. (Near the Nether Edge Sainsbury's).

SUFFRAGETTE

Ruth Bernard

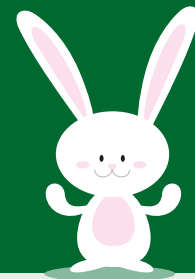
In 1918, women who were householders over the age of 30 (6 million women) were given the vote. This was the result of a long campaign by the Women's Social & Political Union (WSPU), the National Union of Women's Suffrage Societies (NUWSS) and others. Sheffield had a very active suffrage movement. Sheffield was the first place to form a women's suffrage society run by women for women, the Sheffield Women's Political Association, which held its inaugural meeting on 26 February 1851.

In 1897 the NUWSS, whose members were known as suffragists, was founded. The Sheffield Branch was run by Dr Helen Wilson, a doctor of medicine. The WSPU was founded in 1903 by Emmeline Pankhurst, as a breakaway society who wished to become more militant. The members of the WSPU were known as suffragettes.

There had been several suffrage bills presented in parliament in the late 19th century, but they had all failed. The WSPU changed tactics and their campaign became more violent. Members were arrested and many went on hunger strike. In 1906 Emily Davison was killed at the Derby.

Sheffield women continued to be very active in the campaign, and one of the women involved was Edith Whitworth. Edith was born in 1870 in Aston. She married a postal telegraphist in 1893 and came to live at 70 Wath Road, where they had two children.

In 1903 Christabel Pankhurst, of the WSPU and Isabella Fox of the NUWSS, spoke at the Cemetery Road Vestry Hall (just outside Waitrose, now the Somali Community Association) urging women to join the cause. Edith Whitworth was on the platform and was the mover of a resolution demanding immediate legislation extending the franchise to women. In 1906 the Sheffield branch of the WSPU was founded with Edith Whitworth as secretary, and the inaugural meeting was held at her house in Wath Road. On 13 Feb 1907 Edith, along with 3 other suffragettes, was arrested outside the House of Commons, and spent 14 days in Holloway prison. She was described as one of the most enthusiastic disciples of the WSPU. In court she said she had a mission: "I want the vote to help the poor and starving children. I believe that will be the lever by which sweated women will be able to help themselves". (Sheffield Evening Telegraph 14.2.1907) She was friends with Adela Pankhurst, daughter of Emmeline Pankhurst. Adela lived in Broomhill for 2 years working for the WSPU. In 1908 Reginald McKenna, First Lord of the Admiralty, was due to speak at the Cutlers Hall. Adela, Edith and other suffragettes, disguised themselves as kitchen maids to gain entry to the Cutlers Hall and disrupt the meeting. A demonstration of unemployed hunger marchers had also gathered outside the Cutlers Hall. The women were unable to get past the police and into the hall, but Adela managed to speak to the crowd from the hall steps. A scuffle ensued involving the police and the hunger strikers, and Adela and Edith were also caught up in the fracas.



IN WATH ROAD

The WSPU were becoming more militant and violent and Edith began to feel doubtful about these tactics. Much to Adela's dismay, she joined the smaller, breakaway Women's Freedom League, which had a small branch in Sheffield and favoured non-violent forms of protest. The WFL was founded in 1908, and continued with non-violent forms of protest such as non-payment of taxes and organising demonstrations.

All women over 21 were finally given the vote in 1928, 10 years later than men (previously, only male householders had the vote). In 1919

Eleanor Barton became the first woman to be elected to the Sheffield Council, and the first female mayor (Ann Longden), was appointed in 1936. In 1974 Joan Maynard became the first female MP for Sheffield. Jayne Dunn is currently the Lord Mayor of Sheffield and five of the six MPs representing Sheffield are women.

We would like to find out more about Edith. Did she continue to live at Wath Road? How active did she remain? Was her husband involved in the campaigns? I also wondered if having children was a factor in her leaving the increasingly

violent WSPU. It would be very interesting to find out more, especially if any of her descendants are still living in the area. If you have any information, please let me know.

*Thanks to John Baxendale
Rebel Girls Jill Liddington Virago 2006 London
Sheffield Evening Telegraph 14 Feb 1907
Sheffield History Forum
'Sources for the Study of Women's Suffrage'
by Sheffield Archives and Local Studies Library*

GET READY TO TAKE YOUR FITNESS JOURNEY TO THE NEXT LEVEL WITH KENWOOD HALL'S BRAND-NEW GYM MEMBERSHIPS!

Whether you're looking to improve strength, increase endurance, or just stay active our team are here to support you every step of the way.

Enjoy access to a wide range of equipment and spa facilities. Join now and unlock exclusive benefits, including flexible membership plans, a welcoming community, and access to a variety of wellness resources.

Start your
fitness
transformation
today at
Kenwood
Hall!

MERCURE
HOTEL
SHEFFIELD KENWOOD HALL
HOTEL & SPA



**LEISURE
AND SPA**

AT KENWOOD HALL

Elevate Your Fitness,
Elevate Your Life

JOIN NOW

FITNESS STUDIO
CARDIO EXERCISES
SPA TREATMENTS
POOL, JACUZZI, SAUNA &
STEAM ROOM
COMPLIMENTARY ONSITE
PARKING

0114 250 5611
relax@kenwoodhall.co.uk

Mercure Kenwood Hall, Kenwood Road, S7 1NQ

MEMBERSHIPS

SILVER - £38 PER MONTH	GOLD - £48 PER MONTH
<ul style="list-style-type: none">• Full use of Spa Facilities• Gym access during spa hours• 10% off Food & Beverage• 50% off adult day passes• 1 x Free monthly guest pass• 20% off spa treatments• Access to Monday coffee mornings	<ul style="list-style-type: none">• Full use of Spa Facilities• 24/7 Gym Access• 50% off adult day passes• 25% off Food & Beverage• 1 x Free monthly guest pass• Complimentary towels• One free 25-minute Spa Treatment every six months• 30% off spa treatments• Access to Monday coffee mornings
£380 PER YEAR - PAY 10 MONTHS, GET 2 FREE	£480 PER YEAR - PAY 10 MONTHS, GET 2 FREE

T&Cs APPLY

CHILD SWIMMING

Ages 4-11yrs
£12 per month

Ages 12-15yrs
£20 per month

*Prices are with a full paying adult

Receive 3 x weekly guest passes when you first join



0114 250 5611
relax@kenwoodhall.co.uk

£10 JOINING FEE PER MEMBER



WHAT'S ON

in and around Nether Edge in April 2025



UNION HOTEL

Union Road, Nether Edge

The popular Union **Monday night quiz** has been running for 17 years with quizmaster, John Barthram. Starts at 9pm, £2 per team. Free sandwiches, sausages, and sausage rolls. Free drinks for winners and a free meal prize for the best team. All are welcome.

On the first Wednesday of every month, 9pm Monthly Pop Quiz.

£2.00 per team and free food.

New Book Club Tuesday evenings.

Monthly, at Union Pub.

If you're interested in joining, please e-mail: s7bookclub@yahoo.com for details.

CAFÉ #9

Thur 3rd April. Birmingham based **Threaded** creates a distinctive sound, with a unique instrumental line up of clarinet, violin and guitar. This young trio combine their classical training and love of folk music.

Fri 4th April. **Hartwin Dhere**, an accordionist, and **Ross Grant**, violinist, are two of the finest innovators within their country's traditional music culture.

Sat 5th April. Sutherland, the musical alias of **Julu Irvine** and **Heg Brignall**, have taken the folk scene by storm with their fresh approach to folk music.

Sun 6th April. **William Jack** is a multi-style cellist, guitarist and songwriter from South Australia, who incorporates his jazz guitar background into an unconventional style of cello playing.

Thur 10th April. **Little Sparrow**'s delicate acoustic folk songs are created with a combination of flawless vocals, strings, guitars, percussion and tender harmonies.

Fri 11th April. **Reg Meuross Solo** with new song cycle, *Fire and Dust* preview show. Reg's imaginative and finely crafted songs have earned him the title of Master Storyteller and a modern day troubadour. Tickets £15.

Sat 12th April. An evening with **Stephanie Kambring**, declared one of Nashville's most fearless young singer-songwriters.

Sun 13th April. **Heneghan**, hovering somewhere between maudlin and mirthful, Heneghan is a Sheffield-based band whose songs tell of murder,

drought and heartbreak, through rousing lyrics and melancholic harmonies.

Wed 16th April. **Christina Alden** and **Alex Patterson**, are songwriters and multi-instrumentalists from Norwich.

Thur 17th April Share an evening of intricate guitarwork, enchanting melodies, atmospheric textures and beautiful songs with songwriters **Anne-Marie Sanderson** and **Corju Jones**,

Fri 18th April. **Shoon** are a three piece folk outfit, based in Sheffield, who play their own interpretations of traditional songs with the occasional contemporary self-penned number thrown in.



Sat 19th April. **Gabriel Moreno** is a singer-songwriter, poet, performer and lyricist with strong links to the London alternative Americana, folk and singer songwriter scenes.

Wed 23rd April. **Mikey Kenney**, a traditional fiddler held in high regard by his peers, and with the reputation for making quality music and wondrous flourishes of superb creativity.

Thur 24th April. **Sam Carter**, described as an acoustic virtuoso with a 'killer voice' and the ability to play the guitar 'like a harp'.

Fri 25th April. An evening with **Our Atlantic Roots** and **the Goudies**, two highly praised husband and wife duos perform mesmerising harmonies and uplifting stories.

Sun 27th April. **Katie Spencer** has developed her own style based on her eclectic music taste. Growing up in Yorkshire and going to folk festivals has nurtured her love of folk music.

Wed 30th April. **Anna Moss**, vocalist and instrumentalist, her new found brand of sultry stripped-down-soul is steeped in Southern R&B, Americana, porch jazz and gritty hymns of humanity.

All performances start at 7.00pm and tickets from WeGotTickets are £16.50 (unless specified separately) including booking fee and byo/corkage fee should you want to bring alcohol.

SHEFFIELD GENERAL CEMETERY

Sun 6th April. History Tour, meet the residents who shaped Sheffield's history from Mark Firth and Samuel Holberry to the Cole Brothers and George Bassett and many others. Meet at the Gatehouse, top of Cemetery Avenue, S11 8NT, 2pm, 2.30pm Cost £5+booking fee.

Thur 10th April. Cemetery Sessions present **Lili Holland-Fricke** a British experimental cellist, music writer and improviser based in Manchester, and **Manon McCoy** an experimental harpist, vocalist and electronic artist based in the North. Cost £10 +booking fee. Doors open 7.30pm performance 8pm.

Thur 17th April. Folk at The Chapel present **Nomad** plus support. An award-winning flexible ensemble who create multidisciplinary performances blending music with a vibrant array of art forms. Cost £10+booking fee.

Sun 27th April. Hidden Histories Tours and Talk with Professor Lizzy Craig-Atkins. Discover stories of the people buried at Sheffield General Cemetery who lived and died in the Workhouse, those who suffered in the Great Sheffield Flood and those who suffered from the cholera epidemic.

For further information about events contact sgct@gencem.org. All tickets sold online via TICKET SOURCE, no tickets on the door.

NETHER EDGE HISTORY GROUP

Thursday April 24th A guided walk around the Nether Edge shops and beyond.

Meet at the pocket park at 10.00 am. (Near the Nether Edge Sainsbury's).

KING'S CENTRE

Union Road S11 9EH

Sunday 13th April 10.30 - 12.00
Easter Craft and Cake

Thurs. 17th April 5.30 - 7.00 pm
Family Easter Meal

Sunday 20th April 10.30 - 12.00
Easter Sunday Family Service

ST ANDREW'S PSALTER LANE CHURCH

Psalter Lane S11 8YL

Monday mornings 10.00 - 12.00

Knit and Natter

Everyone is welcome to this very informal group. You don't have to be a knitter to come!
Good coffee or tea and home-made cake.

The Tuesday Café. Tuesdays 2 - 4pm, Shirley House (Next door to MHA Southcroft. Parking in the church car park. Access by ramp).

A café for those living at home with memory loss or dementia

and their carers and older people living alone. Hot drinks, cakes, biscuits, music, singing, and more.

For further information please contact the Church Office: Telephone 0114 2678289

Mondays 10 - 12pm, Shirley House

Sat 5th April 9.30 - 12.30pm. There will be a working party to tidy the church grounds. Everyone is very welcome to come and help and enjoy refreshments at about 11am

NETHER EDGE BOWLING CLUB

Nether Edge Road S7 1RU

Gloria Monday's Thursday Fundraiser

Thurs 10th April: 8.00 - 10.30 pm with **Sensible Shoes** £4.00

gloriamondayduo@gmail.com

NETHER EDGE FOLK CLUB

Nether Edge Bowling club

Wednesday evenings at 7.30 pm Please note the new start time.

The club enjoys acoustic music in a wide variety of genres including traditional, roots revival, blues, jazz, country and Americana. It's a friendly community with beginners, experienced players, unaccompanied singers, instrumentalists and listeners all equally welcome.

There is no admission charge but everyone is asked to contribute £2 to the guest booking fund, apart from nights when there is a guest musician - please see below.

Wed. 16th April

Sally Ironmonger and Brian Carter Their aim is to entertain, with songs that make you laugh or cry or just think. Tickets are available in advance at the club (£6) and online (£8)

netheredgefolk.club for more details

LANTERN THEATRE

Kenwood Park Road S7 1NF

Fri. 4th April 7.30 pm

Del Scott Miller

He brings songs of family, of working class struggle, of life on the



street and down the pit, speaking from the past to the present and looking to the future.

£15 + booking fee.

Sat. 5th April 7.30 - 10.20 pm.

Songs from Stage and Screen

CODA is an award-winning touring company celebrated for its exceptional performances of the most beloved songs from both the West End and Broadway stages. £15. Concessions: £12.50

Fri 11th April - Sat 12th 7.30 pm.

Thestival - a two-day celebration of musicals, comedy, drama, and creative debuts.

- Fri. 11th Shadows of Suspicion a dark, comedy, murder mystery.

- Sat 12th Room to Let. Behind a seemingly appealing advert lies a terrible truth.

1-Day ticket £10. Weekend ticket £15.

Tues. 29th April - Sat 3rd May

New Writing: The Shorts

Each piece brings something new to the stage: new words, new faces, and new visions, making for an evening packed with variety and innovation.

Pay What You Can - minimum £1 + booking fee.

Tickets bought at the venue £5.

Book all shows at ticketsource.co.uk

COMMON GROUND COMMUNITY CENTRE

Woodstock Road S7 1GR

Ammi's Kitchen Community Lunch.

Fri. 25th April 12 - 2pm. All are welcome. Eat in only. Free if on benefit or pay as you feel.

www.ammiskitchensheffield.org

Saturday 26th April 6.30pm

Nepalese Curry Night @ Ammi's Kitchen

Limited £20 tickets available on:

• <https://www.paypal.com/instantcommerce/checkout/CJQQLZX9PLPE>

• 07599637889

• or by cash/card when you pick up your takeaway or scan this QR code



WALKING NETBALL

SHU Pearson Building, Broomgrove Road.

Thursdays 1 - 2pm Lots of limbering up, fun activities (See England Netball website) and a short game. You don't have to be skilled or very agile; it's just great fun. £6 per session. Details: whitechristie3@gmail.com

NETHER EDGE W.I.

Nether Edge Club, Moncrieffe Road S7 1HR

Enjoy lively, interesting speakers and activities on the first Tuesday evening of the month. Contact us on facebook.

THE STAG'S HEAD

15 Psalter Lane S11 8YN

Quiz every Monday evening from 8pm.

Everyone is welcome at this popular quiz which has been running for a number of years. It's £1 to enter and there's a maximum of 6 people in a team. The quiz usually lasts for 1½ - 2 hours.

Free food is provided at half time for quizzers. All quiz entry fees go to two charities - St Luke's and Cavendish Cancer Care.

LIVE AT SAM'S

13th April at The Greystones S11 7BS Doors open 7.30 for 8.00pm

Duo Niepold Cutting Two great musicians and friends. £18 + booking fee. WeGotTickets

25th April at St Andrew's Psalter Lane Church

S11 8YL Doors open 7.00 for 7.30pm

Andy Irvine and Quilty Ireland meets Sweden for a melting pot of traditional music from both cultures. £22.50 info@liveatsams.co.uk

SHIRLEY HOUSE

31 Psalter Lane, S11 8YL

Sarcoidosis Support Group meeting.

Thursday April 24th 1.30-4.00. **Christopher**

Sawford will be talking to us about pulmonary rehabilitation and the benefit of exercise. Partners and friends welcome too. There is disabled access.

VICTORIA HALL, S1 2JB

Sat 5th April 7.00 pm. A Northern Requiem
Harlequin Brass, Rose Choir and Escafeld

Chorale To commemorate the coal industry and celebrate the people who once cut the coal. Tickets: rhac.art



JOIN US THIS EASTER
AT KING'S CENTRE

SUNDAY 13TH APRIL

10:30-12:00

EASTER CRAFT AND CAKE

THURSDAY 17TH APRIL

17:30-19:00

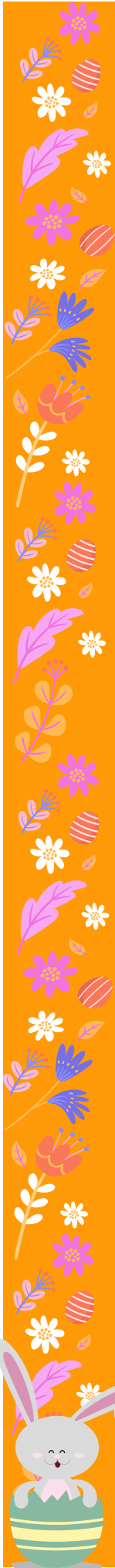
FAMILY EASTER MEAL

SUNDAY 20TH APRIL

10.30AM TO 12PM

EASTER SUNDAY FAMILY SERVICE

King's Centre, Union Road, Nether Edge, S11 8EH



AMMI'S
KITCHEN

CURRY NIGHT

CURRY

DAAL

RICE

PICKLE

CHUTNEY

DESSERT

SATURDAY
26TH APRIL
6:30 TO 9 PM

TICKET
£20

FEATURING
NEPALESE
CHEF PREM



Support our fundraiser book tickets here:
<https://www.paypal.com/instantcommerce/checkout/CJCQXLZX9PLPE>
or email to book on ammiskitchensheffield@gmail.com
or message 07599637889

Common Ground Community Centre, Nether Edge S7 1HA

Job Vacancy

Are you someone who is passionate about making relationships with families, nurturing children's faith and strengthening connections with the local community?

If so, we'd love to hear from you!

We seek an enthusiastic and compassionate person, who can create a warm and welcoming environment, lead our children's work, and play a vital role in our ministry.

Role: Lay Worker for Hospitality, Pastoral Care & Children
Salary: £15,600 for 20 hours/week (+ 6 weeks' paid holiday)
Location: St. Andrew's Psalter Lane Church, Sheffield

Closing date: Noon on 22nd April 2025
Interviews: 1st May 2025

For an informal conversation please contact Anna Calvert,
Chair of the Ecumenical Church Council:
annacalvert3@gmail.com

To download an application form and for more details, please visit www.standrewpsalterlane.org.uk/about-us/vacancies



Your Future South Sheffield:
We want to hear from you!

#southshefflistens



Follow the link or scan the QR code to complete the survey & enter our prize draw to win a £100 City Centre voucher

<https://haveyoursay.sheffield.gov.uk/south-lac>



Survey closes on 13th April

