

WHAT'S ON

in and around Nether Edge in July & August 2023

Union Hotel

Union Road, Nether Edge

The popular **Monday Night Pub Quiz** starts at 9pm. All are welcome.

Wednesday 5th July and 2nd August

9.00 pm. **Monthly Pop Quiz.** Union, Nether Edge.

Café #9

9 Nether Edge Road S7 1RU

Mon 3rd July. Another evening with **Hyuk Namkoong**, the mind blowing classical pianist from South Korea.



Thur 6th July. Balladeste (above), a collaboration between Preetha Narayanan (violin) and Tara Franks (cello), string duo. Classical meets Folk in its broadest form 'Indo-Baroque meets alt-folk minimalism'.

Fri 7th July. An evening with **Jordan Tice & Liv Greene** (below, this exceptional touring duo features two outstanding solo

artists from Nashville, USA, performing a blend of Americana, folk and roots. Tickets £16.50.

Sun 9th July. An evening with a **Different Thread.** A transatlantic band fronted by Alicia Best from Durham, North Carolina, and Robert Jackson from the Midlands of England. They weave together elements of 70s, Folk Revival, Country and Appalachian Blues.

All performances start at 7.00pm and tickets from WeGotTickets are £13.80 (unless specified separately) which includes booking fee and by/corkage fee should you want to bring alcohol.

Byron House

Nether Edge Road, S7 1RU

Quiz night every Sunday at 9.30pm. Cash prizes to be won.

Nether Edge Bowling Club

Fri. 7th July 6.30 - 9.30 pm. Jig for a Kiss An 8-piece multi-instrumental band with six voices, playing foot-stomping, heart-warming, uplifting music from traditional roots around the world. *This is a fundraiser for ASSIST*

Fri. 18th August 7.30 - 10.30 John and Lewis performing Billy Joel.

Sheffield General Cemetery

Fri 7th

July

8.30pm.

A music event, **Into the Trees.**

DJs Joe

and Harry J present a night of dark 80's, post punk, new wave and synth pop sounds within the walls of the gravely beautiful Samuel Worth Chapel. Fully accessible venue with a bar selling local beers, wine and spirits. (card machine only). Tickets £10 plus booking fee available via Ticket Source.

Thur 20th July 6pm-9pm. Chef's

Counter- Persian Street Food at The Samuel Worth Chapel. Chef's Counter is a social enterprise hospitality events company that hosts food based events in underused community spaces. They support charities and community groups who run those spaces through rents they pay, the people they bring together in those spaces and the jobs they create. Proceeds from this fundraising event go to SGCT. Tickets £13.00 plus booking fee, via Ticket Source online, no tickets on the door.

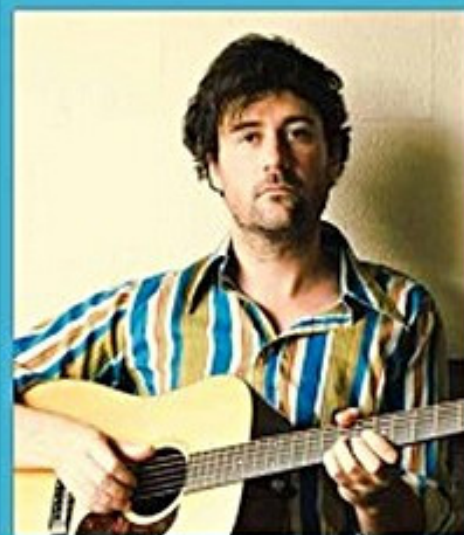
Sat 29th July 8.30pm-1am. Sinners

and Saints with DJ Graham Wright. Music from the 1950s and 1960s, mixing mostly Rhythm & Blues with a smattering of Rhythm & Soul, Rock & Roll, Rockabilly, 1960s Mad beat sounds, Exotica, Popcorn, Garage Punk, and any other music to make you tap your feet and hit the dancefloor. Tickets £6.00 plus booking fee. All tickets sold online via Ticket Source, no tickets on the door. Fully accessible venue, a bar selling local beers, wine and spirits (card machine only).

Sat 12th August. End of Restoration

- Community Celebration. Save the date and join us to celebrate the end of the Sheffield City Council Parks for People Project at the Sheffield General Cemetery.

For further information about events contact sgct@gencem.org



Abbeydale Picture House

387 Abbeydale Road S7 1FS.

Thur 20th July 7.00pm-11.00 pm.

Public Body and Guests live in The Fly Tower. Tickets £8.80 including booking fee, via Eventbrite

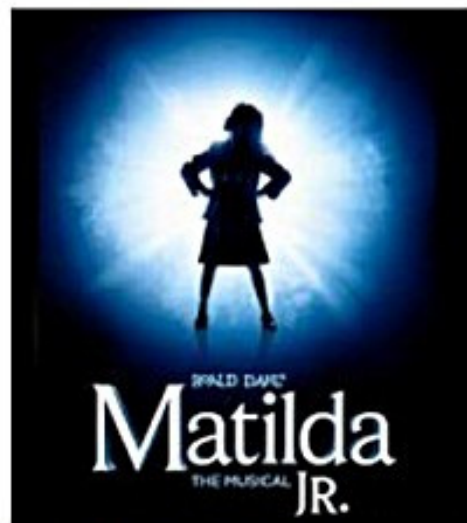
Thur 27th July 7.00-11.00 pm.

Paracetamol the Arnhem garage post-punk band will deliver an extremely intense experience, hard and dark. The Fly Tower. Tickets via Eventbrite

Sat 29th July 7.00-11.00pm. Callous

Daoboy performing at The Fly Tower. 'Absolutely insane show, everyone was on and off the stage'. Tickets via Eventbrite.

Lantern Theatre S7 1NF



Thurs. 13th - Sat. 15th July 7.30 pm.

Matilda Jr. The Musical. Presented by CAOS Academy. Will the cleverness and courage of Matilda be enough to withstand the reign of Miss Trunchbull, the tempestuous and mean headmistress?

Common Ground

St Peter's Hall, Woodstock Road S7 1GR

7th July 12 - 2pm Eat in only. Free if on benefits or pay as you feel.

Sheffield Botanical Gardens

Mon 10th July 18.00-19.00 & Tuesday 25th July at 1pm. The South Africa Garden Public Tour. One hour long public guided-tour. Meet at the entrance to the Dorothy Fox Education Centre, at the top of the slope from Thompson Road gates, off Ecclesall Road. No need to book, just turn up. We encourage people taking the tour to make a £3 donation to the Gardens.

St Andrew's Psalter Lane Church

31 Psalter Lane S11 8YL

Sat 1st July 9.30 - 12.30 but drop in any time. (No working party in August.) All are very welcome to join the working party to help tidy the garden around the church. We break for coffee and a chat around 11.00.

The Tuesday Café A café for those living at home with memory loss or dementia and their carers. Shirley House, (St Andrew's Psalter Lane Church) 31, Psalter Lane, S11 8YL. Next door to MHA Southcroft. Parking in the church car park. Access by ramp. Tuesdays 2 p.m. - 4 p.m. Hot drinks, cakes, biscuits, music, singing, and more. For further information please contact the Church Office Telephone 0114 2678289

Nether Edge Folk Club

at Nether Edge Bowling Club,
8 Nether Edge Road, Sheffield, S7 1RU

Wednesday evenings at 8pm. Come and enjoy acoustic music of many genres. All are welcome whether experienced or beginners to play, sing or listen. There is no admission charge but everyone is asked to contribute £2 to the guest booking fund.

Archer Lane Allotment & Home Garden Society

Sun 9th July 10am - 1pm Open Allotments Fun Day. Come and look round some of the allotments and enjoy some music and creative activities. Please be aware that the ground on the allotments is very uneven and great care is needed.

Sheffield Hallam University

Pearson Building, Broomgrove Rd S10 2NA

Walking Netball This group was started by the U3a but now runs under the aegis of England Netball. We are a group of predominantly older women some of whom hated netball at school or who were just not very good at it. In other words you don't have to have great skills or even be particularly active! We meet on Thursdays from 1.00 - 2.00 pm. The sessions are great fun and involve warm-up activities designed to help us keep active and flexible before a short game of netball towards the end. People usually stop for a cup of tea after the session.

SUMMER ART EXHIBITION

NETHER EDGE ART GROUP
And other local artists/artisans

OVER 25 EXHIBITING ARTISTS



Original art
Live painting
Meet the artists
Refreshments

SUNDAY 9th JULY
NETHER EDGE BOWLING CLUB
11am - 4pm

Nether Edge Art Group

Exhibition of their latest Art and Craftwork including paintings and sketches of St Andrew's Psalter Lane Church in aid of their Spire appeal. **Sunday 9th July** at Nether Edge Bowling Club from 12 to 4pm. Stalls and refreshments, free entry, all welcome

Nether Edge History Group

Wed 12th July 7.30.

Kenwood Hotel. Anne, The Bustle Lady will be talking about 'The Wonders of Gas', in which she will include our sewer gas powered lamp. Anne is a historian specialising in the mid to late Victorian era, covering a wide range of topics; social, economic, political, domestic, agricultural and technological of the period 1875 to 1888. As well as bringing the history of this time to life, she aims to draw parallels with our modern lives.



Banner Cross Methodist Church

Sat 15th July. Escafeld Chorale 'Come and Sing' at Banner Cross Methodist Church. Rehearse from 12.30pm.... music to include John Rutter's Sprig of Thyme, Allegri's Miserere, Eric Whitacre's Seal Lullaby. Music and tea provided. Informal performance at 6pm. Tickets £15 for Come and Sing, £5 for concert. Go to the link on website www.escafeldchorale.org.uk, or text 07383 007 429