



EDGE

Nether Edge Neighbourhood Newsletter
September 2022

NETHER EDGE FESTIVAL 2022 SPECIAL EDITION

GUIDE TO THE VENUES AND EVENTS

HERITAGE OPEN DAYS P3

HISTORY OF
THE FESTIVAL P5

www.netheredge.org.uk





The Nether Edge Neighbourhood Group was set up in 1973 with the following aims:

To improve the conditions of life especially of those living or working in the areas of Brincliffe, Nether Edge and Sharrow in Sheffield, without distinction of sex or race, or of political, religious or other opinions, by associating with local authorities, voluntary organisations and residents in a common effort to advance our education, to improve the environment and to provide facilities in the interest of social welfare for recreation and leisure time activities.

Company limited by guarantee
No. 07414080

Registered charity no 1139239

**Individual views expressed
are not necessarily those
of the group**

EDGE SEPTEMBER 2022

This issue of EDGE was edited by **Vicky Phillips**

Design & artwork: Stephen Houfe (stephenhoufe@gmail.com)

If you want to contribute to the October edition, please contact the
EDGE Editorial Board – nengeditorialboard@gmail.com

NENG Committee Members

* indicates Trustee / Director

* **Ken Lambert** (Chair, Company Secretary & Membership Secretary)
32 Thornsett Rd S7 1NB. 07518 118789 ken.lambert227@gmail.com

Ruth Bernard (Vice Chair & EDGE Editorial Board)

* **Howard Fry** (Secretary & Market) 20 Chelsea Road S11 8BR
howard.fry@icloud.com

David O'Connell (Acting Treasurer) 9 Cherry Tree Drive S11 9AE
nengtreasurer@gmail.com

Tayab Fayaz (Accountant)

Pat Rogers (Minutes Secretary & EDGE Editorial Board)

* **Richard Taylor**

* **David Pierce** (Market & EDGE Editorial Board)

* **Marion Gerson** (Market)

Vicky Phillips (Festival, netheredgefestival@gmail.com)

Nicky Erlen (EDGE Editorial Board)

Helen Willows (Planning)

John Austin (History Group)

Kevin Hickey (EDGE Editorial Board)

Stephen Houfe (EDGE Editorial Board)

Rosalind Watchorn

Kate West

Kevin Bonnett

To contact
individual members
of the committee or for
contact details of the various
sub-groups, please go to the
NENG website :
www.netheredge.org.uk/

Nether Edge Neighbourhood Group Application for Membership/renewal

I wish to join / continue to support* the Nether Edge Neighbourhood Group (NENG) and receive the 'EDGE' magazine by hand delivery / by email* and enclose / have sent* my annual subscription of £

**Please delete as appropriate*

Name

Address

Postcode

Tel

Email

- Your contact details will only be used in connection with your EDGE subscriptions or NENG membership.
- The annual subscription for EDGE is £10 per household, commencing on 1st April each year. Any additional donation to the work of NENG is welcomed.
- Subscribers living outside our distribution area will only receive electronic copies of EDGE, or you can choose to receive EDGE by email by selecting this method above.

Cheques should be made payable to **NENG**, but please bear in mind that everyone in NENG is a volunteer, so we would far prefer to receive payment by Standing Order or by bank transfer (Sort code 30-97-51 A/C 36208368 NENG), as this greatly reduces the administration burden on both your local EDGE distributor and on NENG itself. Copies of a Standing order form (you can alternatively set one up online) to send to your Bank are available from ken.lambert227@gmail.com whom you should advise when you have set up a standing order or made a bank transfer so that records can be updated.

Signature

Date

As a local resident/ supporter of NENG, I also wish to become a full Member of NENG, a company limited by guarantee, which entitles me to full voting rights at the AGM, receive regular copies of EDGE and fully participate in its activities. In the unlikely event that the Company has to be wound up, I agree to pay the sum of £1 towards its debts if asked to do so. I understand this liability will continue for one year after I cease to be a member of the company.

PLEASE NOTE: Should you prefer **not** to become a full member of NENG you still can be just an EDGE subscriber by deleting the section in italics above. This entitles you to receive copies of EDGE but no entitlement to vote. The annual subscription is the same.

Vicky Phillips

Welcome to this special edition of EDGE, featuring the 8th annual Nether Edge Festival! The Festival welcomes all the residents of Nether Edge to come together, celebrate our neighbourhood and have fun together - we hope there will be something for everyone to enjoy.



We've had quite a few changes to the Festival planning committee over the last couple of years, as long-standing members have moved on and new members have joined. In this EDGE, Maggie Little, who has been involved from the very beginning, looks back at how the Festival started and how it has grown. You'll also find some very interesting articles about the inspiration behind some of our events.

Also in this EDGE, some of the community venues who host many of our events, often without charge, introduce themselves and we have details of the events happening there.

The festival itself will begin and end with our two big community events - the Carnival at Common Ground, and the Picnic in the Park - and in between you'll find walks and trails, live music, dancing, poetry, workshops, talks, screenings and more!

We are very excited about a new event organised by Mums United which is taking place on Saturday 17th September - our very own talent show, Nether Edge Got Talent! If you can sing, dance, juggle, or are a poet or magician - whatever your talent, we want you!

There are far too many events to mention them all here - you can find each one on the map on pages 8 and 9, and of course in the Festival brochure.

The Festival is organised on a very limited budget, and our raffle provides basic funding, so please buy tickets! Prizes are generously donated by local businesses, and tickets will be on sale at the Farmers Market and at the Picnic in the Park, where it will be drawn.

None of this would be possible without the hard work and support of many people. We are grateful to everyone involved - everyone who has organised an event, the venues hosting, the many volunteers who help us, local businesses who support us, Sheffield City Council and of course NENG.

Very special thanks to the members of the festival planning committee, and to Jack Bendall our designer, for giving the huge amounts of time and energy needed to make it all happen.

Find us at netheredgefestival.co.uk.

Heritage Open Days 2022

Margaret Blenkinsop

Heritage Open Days is a national event, England's biggest Heritage festival and is now in its 28th year. It celebrates our history, architecture and cultures and all events are free. This year it takes place 9th - 18th September and the theme is Astounding Inventions, although events will not necessarily be linked to the theme. We are pleased that there are over 100 events registered.

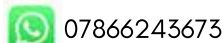
There are a number of interesting walks [Fulwood History walk, the Parkwood Springs walk, a walk around Attercliffe, 18th and 19th Black History of Sheffield, walk the "Streets in the Sky" at Park Hill, walks in the Loxley and Rivelin Valley and nearer Nether Edge, a tour of the General Cemetery, as well as the History Group's walks]. There is a tour/talk about Birley Spa, the Wentworth Pewter Factory and the Aizlewood Mill - a converted Victorian flour mill now used for start-up companies. The renovation of the mill has retained many of the original features, including the scary Paternoster lift which was ascended and descended by hanging on to a belt via a metal handle. There is an interesting walk experiencing the Architecture of Flockton and the ever popular Drainspotting walks.

In the City centre the Cutlers Hall and the Town Hall will be open again and Freeman College at Butchers Works will let us see craft workshops. There are a number of churches including Bradfield St Nicholas, St Andrew's Psalter Lane, Cemetery Road Baptist, St John's Ranmoor, St James' Norton, the Madina Mosque and St Catherine of Siena [designed by Basil Spence]. Some new events include Carbrook Hall, Stocksbridge Valley Museum, Burngreave Vestry and Whirlow Brook Park.

Heritage Open Days is a great way to find out about our history, architecture and culture so make a note in your diary for this year: 9h to 18th September Heritage Open Days 2022. Leaflets giving the details of this year's events will be available at the Moor Market entrance on the 20th August or visit the website: www.heritageopendays.org.uk



Nether Edge Festival 10 - 18th September 2022



final farewells in familiar places

“Really very good for my injury. Perfect recovery program and it works for me. Pooja is a wealth of knowledge and really pinpoints the areas that need work during each visit to help me to regain fitness.”

James, Happy Patient, 2021



Bannerdale Osteopaths, 5 Machon Bank Road
Nether Edge, Sheffield, S7 1PE

0114 419 0173 | www.bannerdaleosteopaths.com

History of Nether Edge Festival

Maggie Little (Festival Chair 2016 and 2017)



2016 Community Art and Craft Fair 2

Early in 2015 the people involved in the regular Farmers' Market wanted to celebrate the achievement of 30 successful markets. They envisaged some kind of festival to mark this. The Nether Edge Neighbourhood Group (NENG) hosted a discussion at the Bowling Club to consider the practical issues involved. A few brave souls agreed to take on the challenge, David Pierce among them, and he must have credit for pushing the idea from the beginning. Many other local people - too many to name - gave us help and support throughout the next few months.

It quickly became clear that a short weekend would not be enough to include all the proposals we had. Our Festival needed to include the regular Farmers' Market, music, literature, art, a ceilidh, children's activities, wine tasting, a multi-faith event, bowling, a photographic exhibition, history walks, etc. So we plunged in and agreed the Festival would run for a full week.

There proved to be a lot of organising. We had to consider events, income, publicity, public safety etc. It was a steep learning curve. However the very first Nether Edge Festival duly took place between Saturday 5th and Sunday 13th September 2015 and, in spite of a few mistakes and mishaps, was a great success.

We learned several things that year. We

decided it was too early in September - families had barely got home from their summer holidays and were focussed on getting children back to school. The brochure, in spite of being delivered to nearly every home, was not particularly eye-catching, and not everyone appeared to have seen it. But we also learned what a great event it could be, how it could bring the community together, and what fun we could all have. We definitely wanted to do it again the next year.

In many ways the 2015 festival set a pattern for what has become our regular Festival. In 2016 we were joined on the Committee by Leanne whose artistic skills spiced up our programmes and other publicity. Some regular events appeared, eg. a bowling taster session, book club, Young Artists, Sounds of the Spirit.

In 2017, the opening event was the Carnival at Common Ground, and this has remained a staple of the Festival ever since. The first Community Art and Craft Fair was held in St Andrews Church.

Mark Doel and Richard Taylor took over as joint Chairs in 2018. The Festivals in 2018 and 2019 harnessed lots of enthusiasm and participation from a wide group of people putting on events and enjoying one another's company.

This came to a sad stop in 2020. The Scarecrow Trail was a success, we could all do this totally out of doors. Party in the Park became Picnic in the Park, people were encouraged to come along and bring their own food. But there was no bouncy castle and no grass sledges, and everything else had to be withdrawn.

However, we were back again in 2021 with even greater enthusiasm than before because of all the privations of the previous year. Covid caused a few changes, eg. the regular ceilidh was replaced by a lovely concert in the Samuel Worth Chapel. An I-Spy event, totally outdoors, was something that could go ahead whatever the Covid situation. The Carnival at Common Ground was a great opening event, and Picnic in the Park made an excellent finale.



Festival planning meeting 2016

The Festival has become an established part of Nether Edge. There are still a small number of us on the Committee who were there from the beginning, but we have also welcomed new members and this year Vicky Phillips is in the Chair. We are supported financially by NENG and by grants from the City Council, while the raffle has proved an enormous help in raising funds. Local businesses, including Wickwire and The Studio, support us by selling tickets, and others offer special arrangements during Festival week. But the most important thing is that many of us who live in Nether Edge are involved in so many different ways: fundraising; brochure delivery; running and supporting events; and, most importantly, enjoying the atmosphere and fellowship that the Festival provides.

Events at

St Andrew's Psalter Lane Church

31 Psalter Lane, S11 8YL



Come to St Andrew's to see our beautiful New Creation Window, designed by Rona Moody as part of major modernization and refurbishment work.

Within this light and spacious church, you can also find our rare Bernard Rice window (the Lady and the Lamp) and School of William Morris window.

We are opening the Church as a Heritage Open Days event, as well as part of the Nether Edge Festival; volunteers will be on hand to tell you about the Church and refreshments will be available.

Our Church is an Anglican-Methodist partnership and we hope that the openness of the building reflects the open approach of our congregation. We belong to the Inclusive Church Network and are an Eco Church. Have a look at the display about the Eco Church project and some of the work we have done as part of it.

Shirley House, which is also part of our premises, was built in 1885 and is home to several businesses: it houses our Interfaith Centre; is used for weekly Quaker Worship; and has rooms available for hire. Why not pop in, while you're visiting the Church, to see the magnificent stained glass window depicting War, Peace, Agriculture and Commerce? *By Clare Loughridge*

The Church will be open on Fri 16 Sept + Sat 17 Sept, 10:00 - 16:00

Relaxation Concerts: Emily Bowden

Mon 12 Sept

10:00 - 10:45 and 11:30 - 12:15

Book at concerteenies.com

Concerteenies are a series of Relaxation Concerts for babies and their parents, which includes classical, folk, world, popular music and nursery rhymes performed by inspirational professional musicians. Relax, listen, sleep, enjoy some sensory fun with your babies. Concerts aim to revitalise and entertain the grown-ups, as well as giving your babies a new magical musical experience. Sensory elements include sound, sight, touch - bubbles, scarves, feathers and simple baby massage techniques for you to explore with your little one at your own pace. Emily Bowden (Emily and the Simons) is a

violinist, singer and composer from London. She will present a programme of gentle and uplifting music from her repertoire of traditional folk tunes, songs and original compositions.

Free tea and coffee will be available. Children should be pre-crawling at the time of booking and be accompanied by an adult.

Talking Gigs presents TANGA PASI TRIO. Exploring musical roots in Zimbabwe

Tues 13 Sept, Doors 19.00

£12 online at talkinggigs.co.uk.

Talking Gigs are excited to bring Tanga Pasi to the Nether Edge Festival stage for an evening of exploring Zimbabwe's musical roots, hearing sweet vocal harmonies - primarily in Tjikalanga

language - and the energy of Zimbabwean rhythms.

Sinini Ngwenya; lead singer, songwriter, guitar;

Involved in music and traditional dance from an early age, he later picked the guitar and has never put it down since. Sinini draws on African traditional music roots, and reggae, for inspiration and their strong rhythms. His modern compositions reflect these influences.

Kenny Mangena -bass, backing vocals.

A professional musician since 1990, working as a session musician and workshop leader, both in Zimbabwe and the UK. Previously with Zimbabwean acapella group U'Zambezi, he has played with Black Umfolosi and other Zimbabwean legends. Kenny has toured extensively across Europe, Southern and Northern Africa

Lucky Moyo – percussion, backing and lead vocals

Singer, songwriter, a founder of Black Umfolosi, Lucky has toured 49 countries, played with Peter Gabriel and Jimmy Cliff and played for dignitaries Nelson Mandela and Queen Elizabeth II. He's appeared at famous venues and also small remote rural areas where he works as a Music for Change artist.

Interfaith Quiz at Shirley House

Monday 12th 19.30

Free - contributions towards snacks and prizes welcome

Join us at Shirley House Interfaith for a fun, informal Interfaith Quiz. Come as a team, or be grouped on arrival. Multiple choice questions, on topics such as 'food', 'festivals' or 'music'. Soft drinks and snacks included. We welcome people from all faiths or none.

Classical and jazz piano – Kaoru and Jascha Bingham

Fri 16 Sept, 19.30 - 21.15

£10 adults, £5 students and children. Available from Stephen on 07747 437282, and on the door.

The Nether Edge Festival creates another first! Here's a unique opportunity to experience solo piano music from both classical and jazz traditions in the same concert and from members of the same family.

This will be the third time that Sheffield-based concert pianist Kaoru Bingham has played at the Nether Edge Festival, but it will be the first time she has ever shared the stage with her son

Jascha, an up-and coming jazz pianist who will be starting his studies at Leeds Conservatoire this autumn.

In the classical first half, Kaoru will play music by Mozart and Brahms. After the interval, Jascha will improvise around a number of jazz standards.

Whatever your musical taste, this will be a fascinating and highly enjoyable evening of piano music.

Family Concerts: Emily Bowden & Simon Dumpleton

Sat 17 Sept

10:30 - 11:15; 11:45 - 12:30

Book at concerteenies.com

Emily Bowden (violin and vocals) and Simon Dumpleton (accordion) perform lively folk music guaranteed to get you and your little ones up and dancing in no time. Their style is highly expressive and improvisatory, full of passion, tenderness and playfulness. With a vast repertoire ranging from exquisite mazurkas to joyful bourrées, their music transports the imagination, stirs the feet and uplifts the spirit.

With songs, dancing, listening as well as bubbles, percussion, props and informal introductions, this is a fun and informal gig for adults and children aged 0-7.

Sheffield Folk Chorale Concert

Sat 17 Sept, 19:30 - 21:30, £5. Available from John at johnlittle31@sky.com or 07488 274 277, and on the door

Since its formation in 2001, Sheffield Folk Chorale has established a reputation as one of Sheffield's leading 4-part harmony choirs. As well as performances in numerous local venues, including sell-out Christmas concerts in Sheffield Cathedral, they have sung in places further afield such as Selby Abbey, Bridlington Priory Church and at the Cheltenham Folk Festival.

Led by Graham Pratt, highly regarded as a performer, arranger and composer of folk music, the Choir has a varied repertoire of traditional and newer songs – some poignant, some humorous and always with a story to tell.

You can get a taste of what to expect by searching Sheffield Folk Chorale on YouTube, where you will find a selection of songs recorded at various concerts over recent years.

The choir is proud to have raised over £35,000 for charities, mainly local, over the last 20 years.

Events at Nether Edge Club

2 Moncrieffe Road, S7 1HR

Nether Edge Club are proud to support the Nether Edge Festival and we're looking forward to hosting some great events during the Festival week. NEC is a social club that's been in the heart of Nether Edge for almost a hundred years. We have a bar, snooker table, pool/games room and a function room available for hire and we welcome new members.. Come and check us out at 2 Moncrieffe Road S7 1HR. You can find us at netheredgeclub.co.uk and we're also on facebook @netheredgeclub. by Darrell Saxton

Meet The Author – Helen Mort

Tuesday 13th September, 7pm, £7

A chance to hear Nether Edge's own award-winning author and poet Helen Mort talk about her new book "A Line Above the Sky" – chosen as this year's Festival Book. A Line Above the Sky melds memoir and nature writing to ask why humans are drawn to danger, and how we can find freedom in pushing our limits. It is a visceral love letter to losing oneself in physicality, whether climbing a mountain or bringing a child into the world, and an unforgettable celebration of womanhood in all its forms.

"Helen Mort is among the brightest stars in the sparkling new constellation of British poets" Carol Ann Duffy She has published two poetry collections (Division Street, 2013 and No Map Could Show Them, 2016), a debut novel (Black Car Burning, 2019), a short story collection (Exire, 2019) and Helen also writes drama and creative non fiction (A Line Above the Sky, 2022). Helen has been shortlisted for the T.S. Eliot Prize and Costa Prize and won the Fenton Aldeburgh Prize in 2015. She appears regularly on BBC radio and sometimes on TV. Helen is a mum to a toddler, a step parent, a trail runner, climber and all round outdoor enthusiast. She also loves dogs, books, dancing and real ale.

Helen will be interviewed about her life as an author and poet by the author of last year's Festival book, Mark Doel. Admission includes tea and coffee, there will be cakes for sale, and the bar will be open. Richard Welsh from the book shop "Rhyme and Reason" will have a book stand. *Please book by emailing richardtaylor635@hotmail.com or texting 07801828068 and then pay on the door.*

Charity Quiz Night at Nether Edge Club

Saturday 10th September, 8pm, £10 per team

Do you want to challenge yourself against others to be crowned Nether Edge Quiz Champion? Come along to Nether Edge Club on Saturday 10th September at 8.00pm for an evening of quizzing and friendly rivalry. There will be Multiple Rounds for all ages – categories to be decided.

Cash and spot prizes. The bar will be open. We will be raising money for two fantastic charities: Alzheimer's Society and Huntington's Disease Association.

The charge is £10 per team of up to 4 people. Book early to secure your team's spot - see netheredgefestival.co.uk for details.

Live music at The Nether Edge Club – kath auto and friends

Sunday 11th September, 2:30pm, free



Local live music needs your support! Please come along to The Nether Edge Club on Sunday afternoon to hear great original music from local indie-electronic band kath auto and special guests. The band went down a storm at their debut outing at Sheffield's Redhouse and have played several more successful gigs since. Bass, synth, live electronic drums and vocals combine for a tight set which is impressively diverse, at one moment head-noddingly dancey, the next movingly melodic, leaving time, of course, to incorporate dub stylings and hip hop beats. There's echoes of Massive Attack, particularly when the bass gives way to acoustic guitar, through to Radiohead via New Order and they're pleasingly difficult to pigeonhole, with the absence of lead electric guitar setting them apart from the indie multitude.

Poetry Evening 22

Wednesday 14th September, 7pm, £5 on the door

An Evening of Poetry hosted by local poet Mark Lawlor. For further details, please see netheredgefestival.co.uk

NETHER EDGE FESTIVAL 2022

1 NETHEREDGE BOWLING CLUB

8 Nether Edge Road, S7 1RU

Adoette by Lydia Monks

Sat 10 Sept 11:00 - 12:00

Film Reels from the Past

Mon 12 Sept 19:00 - 21:30

Croquet and Cream Tea

Tues 13 Sept 12:00 - 17:30

Art Workshop

Thurs 15 Sept 13:00 - 16:00

Tabletop Gaming Workshop -

Patriot Games

Thurs 15 Sept 19:00 - 20:30

Nicola Farnon and the Made Ups

Fri 16 Sept 19:30 - 23:00

2 NETHEREDGE CLUB

2 Moncrieffe Road, S7 1HR

Charity Quiz Night

Sat 10 Sept 20:00 - 22:30

Live music at The Nether Edge Club

Sun 11 Sept 14:30 - 15:45

Meet The Author – Helen Mort

Tues 13 Sept 19:00 - 21:00

Poetry Evening 22

Wed 14 Sept 19:00 - 21:30

3 CAFE#9

9 Nether Edge Road, S7 1RU

A Different Thread

Sun 11 Sept Doors 19:00

Ana Silvera

Fri 16 Sept Doors 19:00

The Often Herd

Sun 18 Sept Doors 19:00

NOT ON MAP SHARROW PERFORMING ARTS SPACE

Mount Pleasant Road, S11 8AE

Free Yoga Classes

Sun 11 Sept
18:00 - 19:30

Tues 13 Sept
18:00 - 19:30

Thurs 15 Sept
18:45 - 20:15

5 CHELSEA PARK

Chelsea Road, S11 9BR

Picnic In The Park

Sun 18 Sept 12:00 - 16:00

6 NETHEREDGE FARMER'S MARKET

Nether Edge Rd and Glen Rd
Sun 11 Sept 12:00 - 16:00

7 COMMONGROUND COMMUNITY CENTRE

Woodstock Road / Machon Bank
S7 1GR

Inflatable Carnival

Sat 10 Sept 13:00 - 16:00

Art & Craft at Common Ground

Sun 11 Sept 13:30 - 16:30

Bollywood Workshop for Women

Thurs 15 Sept 12:00 - 12:45

Memories of Home

Thurs 15 Sept 13:00 - 14:30

**Ammi's Kitchen Festival
Takeaway Special**

Fri 16 Sept
Collect from 15:00 - 18:00

Chance to Shine Cricket

Sat 17 Sept 10:00
Nether Edge's Got Talent!
Sat 17 Sept 14:00 - 17:00

ONLINE SHEFFIELD ANTI RACIST EDUCATION & FAMILY VOICE SHEFFIELD C.I.C

Thurs 15 Sept 19:30 - 20:30

9 BRINCLIFFE EDGE WOOD

Brincliffe Edge Road, S11 9DG

Tree ID Trail
all week

VARIOUS VENUES ART IN NETHER EDGE

**Handmade in
Netheredge Open Studio**

37 Steade Rd, S7 1DS
Sat 10 Sept 11:00 - 16:00

Art around the Edge

11 Ryle Road S7 1HT
48 Crescent Road S7 1HN
Sun 11 Sept 11:00 - 16:00

Art Through Textiles

3 Ryle Road, S7 1HT
Sun 11 Sept 11:00 - 16:00

10 KINGS CENTRE

Union Road, S11 9EH

Kings Kids

Mon 12 Sept 10:15 - 11:45
Thurs 15 Sept 10:30 - 11:45
Fri 16 Sept 10:15 - 11:45

11 ST. ANDREW'S HALL

St. Andrews Road, S11 9AL

Nether Edge Festival Ceilidh

Sat 10 Sept
19:00 - 22:00

J'Acapella Singing experience

Wed 14 Sept
19:30 - 21:00

12 LOTTE ON THE EDGE

14 Union Road, S11 9EF

**Lotte's Urban Beach Party and
Artisan Market**

Sat 17 Sept
11:00 - 17:00

14 ST ANDREW'S PSALTER LANE CHURCH

31 Psalter Lane, S11 8YL

Relaxation Concerts: Emily Bowden

Mon 12 Sept
10:00 - 10:45 and 11:30 - 12:15

Talking Gigs presents

TANGA PASI TRIO

Tues 13 Sept Doors 19:00

Heritage Open Days

Fri 16 Sept 10:00 - 16:00

Classical and jazz piano –

Kaoru and Jascha Bingham

Fri 16 Sept 19:30 - 21:15

Heritage Open Days

Sat 17 Sept 10:00 - 16:00

Family Concerts: Emily Bowden

& Simon Dumbleton

Sat 17 Sept 10:30 - 11:15; 11:45 - 12:30

Sheffield Folk Chorale Concert

Sat 17 Sept
19:30 - 21:30

15 LANTERN THEATRE

Kenwood Park Road, S7 1NF

20% discount on tickets
all week

Tour of The Lantern

Thurs 15 Sept 19:00 - 19:20

16 THE STAG'S HEAD

Psalter Lane, S11 8YN

Folk Dancing

Mon 12 Sept 19:30 - 22:00

Wine Tasting at the Stag's Head

Wed 14 Sept 19:00 - 21:30

17 KENWOOD HALL HOTEL

Kenwood Road, S7 1NQ

25% off afternoon tea

all week

Guided Nature Walk with Jim Clarke

Sat 17 Sept 10:00 - 12:00

18 SHEFFIELD GENERAL CEMETERY

Cemetery Avenue, S11 8NT

Heritage Open Days

Sat 17 Sept & Sun 18 Sept
10:00 - 16:00

19 SHIRLEY HOUSE

31 Psalter Lane, S11 8YL

Interfaith Quiz

Mon 12 Sept, 19:30



Drawn by Jeremy Bays, www.art-work-shop.co.uk
©2019 Nether Edge Neighbourhood Group, under license.

Events at the Nether Edge Bowling Club

8 Nether Edge Road, S7 1RU

The Bowling club is situated in the heart of the newly named Nether Edge Village. Access is by the purple door on Nether Edge Road, opposite Zeds. We have a beautiful lounge and two vast bowling greens so please try to visit us in Festival week—come up the stairs and see what is on offer, even if it's only a pint of Moonshine. New Members are always welcome and our focus is mainly on Crown Green Bowling and Snooker. No experience necessary as we have coaches who will help you get started. We have always supported the Festival and appreciate, over the years, what a prestigious event it has become. Looking forward to a great week. Well done Nether Edge! *by Richard Taylor*

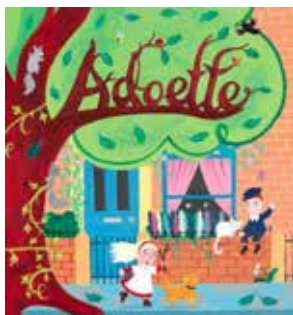
Adoette by Lydia Monks

Sat 10 Sept. 11:00 - 12:00. see netheredgefestival.co.uk for details of how to book

Lydia Monks is the award winning, best-selling illustrator of *What the Ladybird Heard* and lots of other Julia Donaldson books.

Lydia will introduce her new book, which tells the story of Adoette, who has lived on the same street for 100 years. Imagine all the changes she saw?

Lydia will talk about the making of Adoette, which was written during the Sheffield Street Tree Protests, and will do some live drawing. There will be a chance to join in with some drawing too. This is your chance to ask Lydia any questions about how she makes her books. Copies of Adoette will be for sale and Lydia will happily sign them for you. For children 5 yrs +.



Cinema Reels and Me

My name is Peter England and I live in Ecclesall. My father bought me a hand turned 9.5mm projector, circa 1954. Since then I have been hooked on the cinema and all the amazing things that surround it. Later, I bought a Cine camera and starting making my own films, and also had the opportunity of working in a real live Sheffield cinema in an amateur capacity. I then started to repair film equipment for a well-known Sheffield retailer and continue to do so to this day. Along the way I collected lots of films, as they were not as readily available as they are now, and I have a large collection on all film gauges, each reel telling its own story about how I acquired it.

The Film night will be a mixture of films such as bygone London Trams, the making of a float for the Jubilee Lord Mayors Parade of 1977, early Disney cartoons, local travelogue and the like, and hopefully something of nostalgic value to interest each member of the audience. In the days of digital media streaming, this will be an old fashioned picture show using

mechanical equipment and real film (which can, of course, break down). *By Peter England*

Film Reels from the Past will be on Mon 12 Sept 19:00 - 21:30 Tickets are £7 and can be booked online at richardtaylor635@hotmail.com. Payment on the night by cash please.

There will be an intermission where pea and pies will be served [Vegetarian option]—please specify. This is included in the price.

Croquet and Cream Tea

Tues 13 Sept. 12:00 - 17:30. £10, or £8 for cream tea only. Email Michelle at michellepieprzak@hotmail.co.uk to book.

An opportunity to play croquet or bowls in the splendid grounds of Nether Edge Bowling Club (one hour under tuition if necessary), followed by a delicious cream tea in the beautiful lounge.

Art Workshop

Thurs 15 Sept 13:00 - 16:00. £11, including materials and refreshments. Please book in to the session by emailing richardtaylor635@hotmail.com or texting 07801 828068

Nether Edge Village Art Club are hosting an Art Workshop, led by local poet and artist, Mark Lawlor. No experience necessary. All materials will be provided but please feel free to bring your own, any medium, if you prefer. Afterwards, an opportunity to chat and paint with other members of the group.

Tabletop Gaming Workshop - Patriot Games

Thurs 15 Sept 19:00 - 20:30

Interested in what goes into making a tabletop game? This is a fun evening to play and design tabletop games. We'll go through some of the steps and mechanics that have created some of the classics, and hopefully give you those first steps into creating your own!

Nicola Farnon and the Made Ups

Fri 16 Sept 19.30 - 23:00. £12.50. Phone Michelle 07742627839 or email tickets@nebc.uk to book.

Live original music. A group of superb musicians, Funk/Soul/Country/Pop and Rock. 70's song writing with a modern twist.

Making Board Games

Mark Doel

One of my positive memories from the lockdowns is making a board game with my grand-daughter. We formed a bubble and helped with home schooling, and this included designing, making, then playing *Lost In Essex*. The experience of deciding the setting, refining rules, drawing cards and making the actual board and pieces was nicely complex. We learned about ethics, decision-making, collaboration and competition. Board games bring people around a small space where everyone has to be 'present' for it to work, where you have to watch and take note and negotiate. You learn when to strike your advantage and when to hold back, and how to be gracious.

I've been fond of making board games since I was a boy. One board survives from that time: inspired by a 60s TV programme, *The Fugitive* requires one player to locate a one-armed man (the true killer) whilst avoiding all other players, the pursuing Police. With a bit of tinkering of board and rules, it worked — and it was fun.

I've never studied games theory, but I know the importance of balance between strategy and chance. You want to reward good strategy, but also for all players to have a chance of winning, even towards the end.

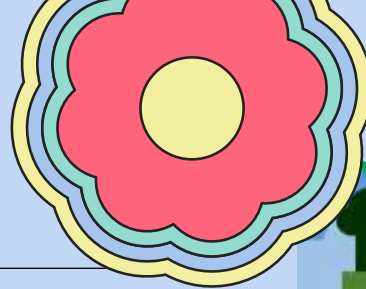
To date, I've invented about a dozen games. The best, *Get Out The Vote*, combines an outer circuit governed by chance (throw of the dice) and an inner map governed by strategy. I like the interplay between the two. The aim is to become the biggest party in parliament and the game plays out reliably for about 40-60 minutes. In most playings, all four players are on each others' heels up to the end. By contrast, I cannot get *Hadrian's Wall* to work at all. The game board is pleasing, but a workable set of rules, especially around movement and engagement, is proving tough. It's too slow-burn and the end result becomes obvious early on. Help!

Sean Johnson from Patriot Games will be leading the Tabletop Gaming Workshop at the Nether Edge Bowling Club from 7-8:30pm on Thursday 15th September.

Events at Common Ground Community Centre

Woodstock Road / Machon Bank S7 1GR

Common Ground Community Centre is a small charity set up and run by local volunteers to preserve St Peter's Hall as an active community space. Following significant investment and work by our team over recent years we have upgraded our facilities and outdoor space and now host a huge range of fantastic activities and groups including Family Voice, Ammi's Kitchen, VOZ Theatre and many more! We have a friendly, growing team of volunteers and are always looking for people to help out. Can't wait to welcome you all again at the amazing events we have on for the Nether Edge Festival! *by Jake Hurst*



Inflatable Carnival at Common Ground

Sat 10 Sept, 13:00 - 16:00

Our annual Carnival opens the Nether Edge Festival with a bounce! We'll have lots of bouncy castles, slides, and other inflatable fun! Ammi's Kitchen will be serving up delicious food and drink. Fun for all the family! Everyone welcome!

Art & Craft at Common Ground

Sun 11 Sept, 13:30 - 16:30

An afternoon of free, fun arts and crafts activities for children – including crafting with upcycled materials with Scrapdragon. Also featuring the Young Artists Exhibition - our annual exhibition of fantastic artwork created by children and young people from local schools!

Bollywood Workshop for Women

Thurs 15 Sept, 12:00 - 12:45

A fantastic chance to learn some Bollywood dancing! One of the largest film industries in the world, Bollywood cinema has a long history of filmmaking. One of the key components of Bollywood is the dancing and songs.

Come along to a workshop run by Nisha Lall and learn some Bollywood dance moves in a welcoming space. No dance experience needed, all cultural backgrounds welcome.

Nisha is very experienced and has worked for years with people citywide to help them relax and have fun whilst moving to Bollywood music. Just come along and take part. It will make you smile :)

Memories of Home

Thurs 15 Sept, 13:00 - 14:30

home / گھر / घर
is it a place, a feeling or the people in it?

Is it a place, a feeling or the people in it?

Voz Theatre invites you to an afternoon of storytelling through photography, music and spoken word.

This exhibition on the themes of home and identity will present photos from our men's photography group and artwork from a group of Y5 children at Sharrow School. It will be followed by a short multilingual performance of spoken word, music and dance by a group of local women from different cultural backgrounds, exploring the links between past, present and future generations of women, and connecting our community in Sheffield to other places around the world. The performance will culminate in a shared meal cooked by the wonderful Ammi's Kitchen.

This event is a collaboration between Voz Theatre and Family Voice. Voz Theatre is working with the local community in Nether Edge and Sharrow to create theatre and arts projects on issues that matter to them.

Ammi's Kitchen Festival Takeaway Special

Fri 16 Sept, Collect from 15:00 - 18:00

Ammi's Kitchen are proud to present a special takeaway for the Nether Edge Festival. "Lobia Masala and Moong & Masoor Dhaal !!!"

All meals are made by local women who bring generations of experience to their authentic and extremely tasty recipes. It is often men who get the credit in restaurants and takeaways - but not here! Women come to Ammi's Kitchen with expert and often extraordinary culinary skills, years of experience cooking for families, everyday and for big family events.

Ammi's Kitchen is a local social enterprise based at Common Ground in Nether Edge. Profits help to pay for local women to pass their Food Hygiene Certificate and move towards

employment with the support they need. Women cook recipes from their home countries - like Pakistan, Nepal, Sri Lanka and Iraq. The meals are authentic and delicious. All our meals are vegan and full of the freshest ingredients and spices.

You can order by email by contacting ammiskitchensheffield@gmail.com or go to netheredgefestival.co.uk for details of how to order online. Order your meal by the end of Tues 13 Sept for collection or delivery on Fri 16 Sept

Nether Edge's Got Talent!

Sat 17 Sept, 14:00 - 17:00, Free

Can you Sing? Dance? Juggle? Are you a Magician? Or a Poet? Whatever your talent, we want to hear from you! Mums United are hosting Nether Edge's Got Talent! - a community event to showcase the amazing talent in our area. Open to everyone, children and adults.

Reserve your slot by contacting us at mums-united.com or mumsunitedsheffield@gmail.com



Nether Edge BAME Women's Page



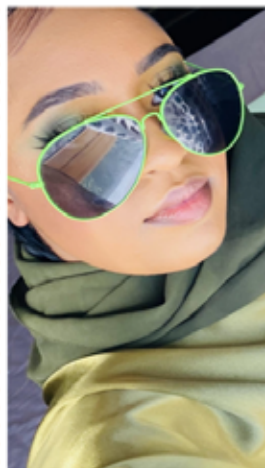
Gouri's Recipe

250 g Vigna mungo beans
1 big Onion
1 ½ teaspoon Salt
1 Green pepper
Curry leave
1½ teaspoon Fennel Seeds
Oil
1 Chili



First take a bowl and soak the beans in tap water. After 45 minutes drain the chickpeas and grind. Then cut the small onion, chili, pepper and curry leaves. Mix everything together and add salt. Make patties in your hands then use your finger to make a hole like a donut. Deep fry on a low heat until golden..

Homelessness



Since I came to England I have been thinking about homeless people, especially women. When I go to supermarket I try to be friendly and chat with them, so many people think they need money but no only they want someone to smile and share their time it make their day.

BY HAWA

My Passion



I love learning and teaching. Back home in Pakistan, my mother is my inspiration. She did not go to school but she continued learning all her life. My father and I used to teach her from different books. Because of this I'm looking for work in the UK in the type of role where I get to make a positive difference to children's daily life and the opportunity to grow, improve and develop whilst learning from others.

By Shabana

If you are a BAME woman in Nether Edge and would like to contribute to this page please contact us on: info@familyvoicesheffield.org / 07951510366

Festival Walks, Rambles and Trails



I-Spy Nether Edge

In 2020 Nether Edge Festival was very badly affected by the Covid crisis and very little happened, apart from a successful Scarecrow Trail which, of course, was held completely outdoors. In early 2021 it was again uncertain how much of our festival would be able to go ahead. I tried to think about what we could do outdoors, preferably not another scarecrow trail, but something similar that would interest people whatever the Covid situation.

It occurred to me that there are many interesting features in our local landscape. Unusual doorways, distinctive letter boxes, wall paintings, plaques. I thought we could create an interesting trail around the district and bring unusual things to people's attention. I set out with my small camera to take some photos but quickly realised that my photography skills were not up to the task. Then I thought to myself "Aha, I know a man who can!" I have known John Scholey for many years, he lives in Nether Edge, has been President of Sheffield Photographic Society and frequently has photographs in the local papers. So I recruited John to help and he took all the photos you saw in last year's trail. Thank you John!

The trail proved very popular and we hope many of you enjoyed it. There are still plenty of unusual things in Nether Edge that didn't feature in last year's trail, so we have another one for 2022! This year we have 21 photographs of buildings, doorways, murals and many other unusual things for you to find.

You can collect your free I-Spy sheet from local shops, including Wickwire and The Studio, or find it online at netheredgefestival.co.uk. Answers will be published in EDGE in November and on our website. Thanks again to John Scholey for the excellent photographs! *Maggie Little*



One of the photos from last year's I-Spy trail. Do you know where this unusual post box can be found? Answer on page 15

Guided Nature Walk with Jim Clarke

Jim will lead a guided walk around Kenwood Hall Hotel on Sat 17 Sept - find out all about the flora and fauna to be found in this local haven for wildlife. Meet outside reception at 10am.

Tree ID Trail in Brincliffe Edge Wood

Come and explore Brincliffe Edge Wood and follow our tree ID trail. Start at either Oak Hill Road entrance or the one opposite Chelsea Park and keep your eyes peeled for a sign on a tree. Find out all about the different species of tree in the woods by following the arrows to find the next one. Organised by the Friends of Brincliffe Edge Wood, this free, unsupervised, self-guided activity for all ages is available throughout the Festival.

A Geological Ramble On Your Doorstep

Join the Sheffield Area Geology Trust on Tues 13 Sept on a walking trip looking at several sandstone and mudstone rock outcrops. These have clues imprinted into them as to how they were formed and how they break down. We will see how the rock was used in building and brick making, also looking at local coal extraction and its surprising end use. There is a wealth of information at our fingertips, did you know for instance that the area had a huge quarrying industry at one time employing hundreds of people? Wear decent shoes, although the walk will mainly use tarmac footpaths. Be prepared for inclement weather. Meet at the road junction of Brincliffe Edge Road and Bannerdale Road at 2:30pm.

Scarecrow Trail

Our popular Scarecrow Trail is back for 2022 - this time with a Pirate theme! Keep a lookout for pirates with parrots, peg-legs and pieces of eight throughout the Festival. You may have already seen Cap'n Pot-Belly (pictured) in the Oxfam window - this fantastic scarecrow was made by Mark Doel and his grandchildren, and has been helping publicise the trail. The Trail map will be available on our website and in the Oxfam window during the Festival.



NETHER EDGE FAIR

Support local independent makers:
Art & Jewellery; Body & Bath;
Crafts & Clothes; Eco & Charity;
Food & Drink; Garden & Outdoors;
Home & Toys

For Birthdays, Anniversaries,
Every Day

FREE Personal Present Shopping Service
available: jlallen1812@gmail.com

<https://www.netheredgefair.com>

(After website costs) every penny goes to charity

WHAT'S ON

in and around Nether Edge in September 2022

Nether Edge Bowling Club

Nether Edge Road, S7 1RU

Nether Edge Folk Club meets every Wednesday at 8.00-10.30pm. Complete novices and experienced performers are all very welcome at the Nether Edge Bowling Club. For further information see website. netheredgefolk.club or email: folkclubnetheredge@gmail.com

Union Hotel

Union Road, Nether Edge.

The popular Monday night **Pub Quiz** starts at 9pm. All welcome.

Wed 7th Sept 9pm. **Monthly Pop Quiz**. Get there early to get a seat.

Byron House

Nether Edge Road, S7 1RU

Quiz night every Sunday at 9.30pm, Cash prizes to be won.

St Andrew's Psalter Lane Church Garden

At the junction of Cherry Tree Road and Psalter Lane.

The first Saturday of the month (except January). Anytime between 9.30 am - 12.30pm. Join a team to **help with gardening of the Church grounds**. Everyone is welcome and we pause for refreshments and a chat at around 11.00 am.

Sat 10th, Fri 16th and Sat 17th Sept. 10.00am-4.00pm. Take a **short tour of the church**, chat with our stewards about our history or simply enjoy the quiet space and wonderful light of the building.

Archer Lane Allotment and Home Garden Society

Sat 3rd Sept. We are thrilled to finally have our **annual show** after a three year hiatus. After judging, the Show will be open to the public from 2.15 pm. and the prize giving, raffle and auction will take place at 3.00 pm. If you are a member (or wish to pay £6 to become one - new members welcome) you can pick up a show schedule from

the Pavilion any Sunday morning between 10.00am - 12.00 pm. and enter classes for vegetables, flowers and/or fruit. There's also a domestic section and a children's section. www.archerlaneallotments.co.uk

Sheffield General Cemetery Trust

Sheffield S11 8NT

Sun 11th Sept 2.00pm. **Death Café - End of Life Doula**, Penny Merrett, will be hosting a talk and workshop at Samuel Worth Chapel, Sheffield General Cemetery. Suggested donation £5. For more information visit website: <https://deathcafe.com>.

Sat 17th and Sun 18th Sept 10.00am-4.00pm. **'Astounding Inventions and Innovative Minds' Self-Guided Walk**. The Burial Research Team have been uncovering the stories of inventors and innovative thinkers buried at Sheffield General Cemetery. Trail maps available at SGC Gatehouse, Cemetery Avenue and Gencem.org from 10th Sept.

Sat 17th and Sun 18th Sept 10.00am-4.00pm. **Sheffield Cemetery Heritage Open Days**. Learn about the rise and fall of the 'Garden Cemetery', exhibition at the Samuel Worth Chapel. No booking required.

Sat 17th Sept 2.00pm. **Geology Walk** with Peter Kennett, The Gatehouse, Sheffield General Cemetery. Learn about the varieties and origins of igneous, sedimentary, and metamorphic rock used to make the gravestones and buildings at SGC.

Café#9

Nether Edge Road, S7 1RU.

Thur 8th Sept 7.00pm. **An evening with Mark Lemaire and Claudia Russell**. Their music ranges from 'subtle, pin-drop delicate solo to raucous sing-alongs'. *Tickets £13.75 from WeGotTickets*

Fri 9th Sept 7.00pm. **An evening with Humbird and Luke Allen**. Music inspired by the 'crystalline chill of the north country' she calls home in Minnesota. *Tickets £13.75 from WeGotTickets*

Sun 11th Sept 7.00pm. **An evening with A Different Thread**. Collaboration between Robert Jackson from Lichfield and Alicia Best from Durham, North Carolina. *Tickets £13.75 from WeGotTickets*.



Fri 16th Sept 7.00pm. **An evening with Ana Silvera** a 'London born singer-songwriter and multi-instrumentalist, whose folk and bluegrass-tinged tunes are lyrical, intimate and emotive'. *Tickets £13.75 from WeGotTickets*.

Sun 18th Sept 7.00pm. **An evening with Often Herd** 'who are able to pull off their intricate material alongside moments of exciting, spontaneous improvisation'. *Tickets £13.75 from WeGotTickets*.

Sun 22nd Sept 7.00pm. **An evening with Ruth Theodore** 'a truly unique artist and performer, creating charming and humble yet challenging and compelling pieces of original work'. *Tickets £16.50 from WeGotTickets*.

Thur 29th Sept 7.00pm. **James Patrick Gavin Trio**. *Tickets £13.75 from WeGotTickets*.

Fri 30th Sept 7.00pm **An evening with Balladeste**, a collaboration between Preetha Narayanan (violin) and Tara Franks (cello). *Tickets £13.75 from WeGotTickets*.

Sheffield Heritage Open Days

Fri 9th - Sun 18th Sept.

Check out www.heritageopendays.org.uk for details of events and venues. Access to all Heritage Open Days is free but numbers may be limited and prebooking will be essential for most in-person events.

Yorkshire Churches' Day

Sat 10th Sept.

Many places of worship in the region will open up and showcase the history and heritage found inside their buildings.

Nether Edge Market

Sun 11th Sept.

Sheffield Botanical Gardens

Sat 3rd - Sun 4th **Art in the Gardens**

This is arguably the largest outdoor art market in the North of England with artists, craft makers and visitors coming from across the UK. *Tickets must be bought in advance via Eventbrite.co.uk. General admission tickets for over 16s is £6 (plus ticket fee +20% vat). Under 16s tickets are free. Ticket sales will end 1 hour before the end of the event. You must turn up to the session that you booked tickets for.*

Fusion SEND Hub Talbot Specialist School

Lees Hall Road S8 9JP

Makaton Level 1 Fri 30th Sept. 9.00 am - 3.30 pm. Makaton is a unique language programme that uses symbols, signs and speech to enable people to communicate. This course is recommended for parents, family members, carers and workers who need to use Makaton at home and in their work. *Cost £69 per person via <http://fusiontsa.eventbrite.co.uk>*

Abbeydale Picture House

387 Abbeydale Road S7 1FS

Fri 2nd Sept 8.00 pm - 11.00 pm. **PUNKS NOT DEAD!** presented by Karma Leon's Cabaret, your favourite lovable oddlings, strangelings and weirdos of Sheffield. Reviving the Good Ol' Punk and Goth days and celebrating our inner darkness! *Tickets £11.37 - £13.52 from www.eventbrite.co.uk*

Sat 3rd Sept 7.00pm - 10.30 pm. Doors open 6.15 pm. **A double-bill screening of The Warriors** (1979) with John Carpenter's **Escape From New York** (1981). Part of the city-wide Sheffield Showcase weekend where the city's cultural activity showcase their creativity and diversity for a whole weekend of unique events. *Tickets £6 (plus booking fee) from www.eventbrite.co.uk*

Sun 11th Sept. Timed bookings. Venue - The Fly Tower, Abbeydale Picture House. **Sheffield's Cinema Heritage** with historian Mike Higginbottom. A talk and

presentation into the history and heritage of Sheffield's cinemas. *Free but book a time 11.00 am - 12.00 pm or 2.00 pm - 3.00 pm www.eventbrite.co.uk*



Wed 14th Sept 8.00 pm - 11.00 pm. **Tan Cologne + Bobby Lee.** The two artists work in sonic and tactile modalities inspired by both Earthly and otherworldly landscapes. "...a beautiful collection of magically transportive, gloriously narcotic dream-pop (Gorilla Vs Bear)" *Tickets start at £9.97 via eventbrite.co.uk*

The Lantern Theatre

18 Kenwood Park Road S7 1NF.

Tickets available from www.ticketsource.co.uk/thelanternsheff

Mon 12th-Sat 17th Sept 7.30pm. **A Chorus of Disapproval by Alan Ayckbourn.** *Tickets £14.00*

Sat 24th Sept 7.30pm 7.30pm. **The White Dress- The Last Great Ghost Story by Sheffield born Paul Voodini.** *Tickets £10.*

Fri 30th Sept 7.30pm. **Nightmare Magic** (Age limit 15+) *Tickets £15.00.*

ADVANCE NOTICE: Thur 6th and Fri 7th Oct 11.00-5.00pm and Sat 8th Oct 11.00-9.00pm, with Auction at 6.30pm. **Hope. Art & Sanctuary.** An exhibition of photographs and carvings by Kevin Bonnett and Michael Bayley in aid of Assist Sheffield at Highfield Trinity Church. www.HopeArtSanctuary.co.uk

Tree-sistance

Premiere screening of feature documentary about Sheffield Trees Conflict

Residents of Sheffield's tree-lined streets face a dilemma; give way to the seemingly all powerful local council who plan to fell half the city's mature street trees, or resist. *Tree-sistance* is a feature documentary about the battle to save Sheffield's street trees. But underneath, it's about how ordinary people become self-empowered to save their street trees and local environment from destruction, and win. 'Tree-sistance' is a microcosmic view of an enormous, global issue. It is just one small example of the fight going on around the globe.'

Saturday 17 Sept, doors 7pm, film starts 7.30

*The Nelson Mandela Auditorium, Sheffield Students' Union, Western Bank, S10 2TG
Tickets: advance £5.50; Door, £10. Contact: Blackbirdnorthfilms@gmail.com*

I Spy Nether Edge answer: This Victorian Postbox can be found on Brincliffe Edge Road between Union Road & Edgehill Road



Designed and crafted with the future in mind.

Using a combination of **high-quality** fixtures and fittings, and **eco-friendly** materials, whether it's high recycled content, reclaimed or sustainably sourced, we create living spaces that are **designed and built to last for decades.**

At Sheffield Sustainable Kitchens, we plan, design and fit beautiful **bespoke** kitchens, bathrooms, **utility** and boot rooms, **wardrobes**, **home offices**, **fitted shelving** and more.



Call us today on 0114 250 9078
or see our website for more information:
www.ssk.uk.com



Sheffield
Sustainable
Kitchens

Quite simply, thoughtful design, quality materials,
made to measure and built to last.
Let us help you create your perfect kitchen.