



# EDGE

**Nether Edge Neighbourhood Newsletter**  
**October 2022**





## EDITORIAL

### Stephen Houfe

In this issue EDGE celebrates some individuals who help to make Nether Edge the cosmopolitan place it is. We include a young poet who has won a prize with her poem celebrating Sheffield's trees, an ex-professional footballer and a minister who has recently left Sheffield. And, to blow our own trumpet, a very complimentary article about the Market NENG runs four times a year, from the point of view of one of our regular stallholders. But we also look at the continuing controversy about the experimental traffic changes that has divided our community - almost literally. Ken Lambert's article on page 8 explains how we got to where we are today, and what may happen next!

EDGE always values your views on what's happening in and around Nether Edge. We encourage feedback and letters from readers. So, if you have thoughts on the traffic changes or indeed any other issue you feel strongly about, let us know. Drop us an email at [nengeditorialboard@gmail.com](mailto:nengeditorialboard@gmail.com)

Recently my son visited and brought a drone with him. I wasn't going to let the opportunity to get some aerial shots of our neighbourhood pass me by. The resulting photographs show Nether Edge from a perspective we rarely see and emphasise what a lovely place we live in. I hope you like the photographs included in this issue.

This issue of EDGE was edited by the EDGE Editorial Board  
Design & artwork: Stephen Houfe ([stephenhoufe@gmail.com](mailto:stephenhoufe@gmail.com))

If you want to contribute to the November edition, please contact the EDGE Editorial Board – [nengeditorialboard@gmail.com](mailto:nengeditorialboard@gmail.com)

### NENG Committee Members

*\* indicates Trustee / Director*

\* **Ken Lambert** (Chair, Company Secretary & Membership Secretary)  
32 Thornsett Rd S7 1NB. 07518 118789 [ken.lambert227@gmail.com](mailto:ken.lambert227@gmail.com)

**Ruth Bernard** (Vice Chair & EDGE Editorial Board)

\* **Howard Fry** (Secretary & Market) 20 Chelsea Road S11 8BR  
[howard.fry@icloud.com](mailto:howard.fry@icloud.com)

**David O'Connell** (Acting Treasurer) 9 Cherry Tree Drive S11 9AE  
[nengtreasurer@gmail.com](mailto:nengtreasurer@gmail.com)

**Tayab Fayaz** (Accountant)

**Pat Rogers** (Minutes Secretary & EDGE Editorial Board)

\* **Richard Taylor**

\* **David Pierce** (Market & EDGE Editorial Board)

\* **Marion Gerson** (Market)

**Vicky Phillips** (Festival, [netheredgefestival@gmail.com](mailto:netheredgefestival@gmail.com))

**Nicky Erlen** (EDGE Editorial Board)

**Helen Willows** (Planning)

**John Austin** (History Group)

**Kevin Hickey** (EDGE Editorial Board)

**Stephen Houfe** (EDGE Editorial Board)

**Rosalind Watchorn**

**Kate West**

**Kevin Bonnett**

To contact individual members of the committee or for contact details of the various sub-groups, please go to the NENG website :

[www.netheredge.org.uk/](http://www.netheredge.org.uk/)





# Narrow Escape on Cemetery Road

**John Baxendale**

It is the morning of Saturday 5 August 1899, and the 8.30 tram pulls out of the Nether Edge depot bound for the city centre. The ceremonial first electric tram from Tinsley to Nether Edge is just a month away, and the poles to carry the power cables are already in place, but this tram is still horse-drawn, under the command of the experienced 52-year-old George Staniland. Passengers climb on board as the tram makes its way along Montgomery Road and Wostenholm Road: businessmen on their way to the office (Saturday morning being working time), a few ladies looking to get early into the shops. Lethbridge Bustin, a manager with Ind Coope brewery, who lives on Violet Bank Rd, is on board from the start. So is Clifford Heartley of Moncrieff Road, on his way to his haberdasher's shop near the Sheaf Market. Carl August Hahn, 46, German-born, who has risen from a humble clerk to a partner in the steel manufacturers Jonas & Colver, gets on board near his house on



Wostenholm Road, expecting a morning in the office before joining his family who are already on holiday in Bridlington.

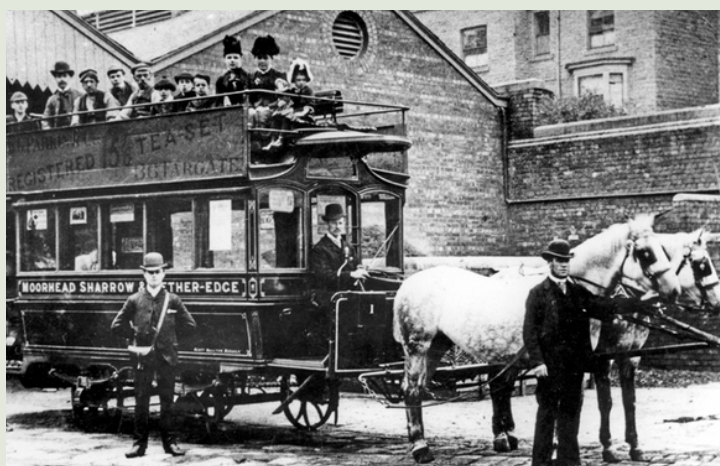


*Montgomery Road*

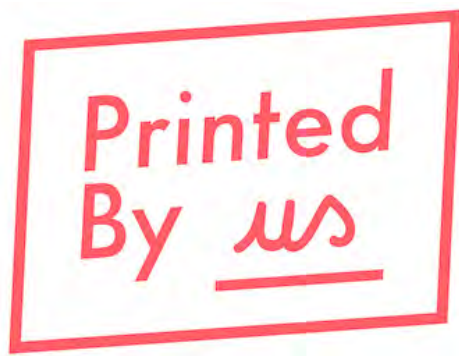
passengers. He blows his whistle continually to alert the traffic ahead, in particular the Heeley tram which is due up London Road. Tram, crew and passengers career down the hill towards the complicated junction at the bottom of Cemetery Road.

Inside, all is panic. Passengers crowd towards the exits and the stairs down from the open top, thinking only to get off before they are killed. As the tram passes the Ecclesall Vestry Hall half a dozen men, anticipating catastrophe, jump off, or perhaps are pushed by those behind them. Horse-drawn trams normally travel at five or six mph, so jumping off a moving tram is relatively safe; at this speed it is a different matter. Bustin and Heartley suffer severe cuts and bruises from falling over when they hit the ground. Hahn, who struck his head on the pavement, is more seriously injured, and is carried unconscious to the nearby house of the surgeon John Jeeves. He eventually recovers consciousness and is taken home in a cab.

In the end, the only passengers injured were those who tried to avoid injury by jumping off the tram. The driver managed to hold back his horses sufficiently, and although the tramcar left the rails at the notoriously tricky junction and collided with an electricity pole, it didn't overturn. It could have been so much worse. Debates would be had about the layout of the junction, and about the suitability of this quite old model of tramcar for Sheffield's hills. But all agreed that George Staniland, the driver, was the hero of the hour. As the Independent put it, 'He spoke quietly and modestly, like a man who is only conscious of having done his duty, but in his eye there was a sparkle of satisfaction derived from the knowledge that his duty had been satisfactorily and successfully performed'.







## Chris, Printed by Us

**One of the regular Nether Edge market stallholders, Printed by Us, writes about their experiences at the market and about how they are working with vulnerable adults as part of the Archer charity project.**

Events, we love them! But not all are created equal. As we excitedly approach the Nether Edge Market, we'd like to take a minute to reflect on our experiences at this truly great one.

Events and our stalls at them are our bread and butter and where it all began for our social enterprise "Printed by Us". They are also where we first got to meet our lovely customers and share our personal stories of overcoming challenging life experiences, resilience, rehabilitation and recovery whilst proudly showcasing the high-quality arts and garments of our award winning Sheffield charity.

Stalls are also one of the main responsibilities in my role and I absolutely adore them. I love meeting new people and telling my story from being a homeless heroin addict to serving prisoner back in 2017 to my employment here the very day of my release.

All of our premium and ethically sourced and manufactured goods are created in collaboration with local artists and hand created in the city by vulnerable and formerly homeless adults filtered from our parent charity the Archer project.

Our organisation, it's safe to say, has had a profound impact on all of our lives but none of it would be possible without the kindness and support of our customers, event organisers and all the lovely people who are enthused and inspired by us and what we do.

Nether Edge Market is without a doubt one of the best events we have the pleasure



of attending. In fact when our upcoming attendance is announced, our staff clamber for a spot on the stall team. Some of our most successful sales figures from a single day's event have been reached here and have regularly been improved upon at subsequent attendances.

The event's organisers are aware of us, what we do, our mission and the people that we employ. We have always felt accepted here, never judged, and treated with respect and decency by staff, stewards and other stall holders. The local people too are intimately aware of us now and it genuinely thrills me when I meet with return customers who come back to buy another exciting product in our regularly released new lines of art, garments, and mini creators kids t-shirt designs.

The area itself is beautiful, clean, quaint and friendly, the locals are truly lovely, encouraging and supportive. Our printers John and Anna can attest to this being from and still living in their area.

The market is always dynamic, well organised, often packed shoulder to shoulder (this is not a complaint) and certainly has a festival-like atmosphere. Arriving early and setting up leaves us with a little time to spare. At this point my favourite thing to do is to have a stroll up and down

the elongated t-shaped junction that makes up the event. I'm always impressed by the pretty, well kept streets and homes. One's senses are stimulated by the diverse range of sights and smells from the cultural and domestic foods and goods from the other stalls: the delicious smells permeating the air that is already laden with the notes of the live music performances.

Time flies by while we are here and it's always far too soon before it's time to pack everything away and leave. You can't win them all much like anything you do in life. Sometimes when we leave we don't feel particularly accomplished, especially if it's been a hard slog, quiet event with not many sales or foot traffic. This is never an issue at the Nether Edge event. We always do incredibly well, and leave having made a profit feeling fulfilled and happy that we have not only paid ourselves but made a significant contribution to growing our organisation. Simply working at this event makes us all feel that we have brought growth to Printed by Us. It makes us feel that we have value. For some of us who have led difficult lives being valued and respected is nothing short of life changing, being a human being with value. Well that's the entire reason why we do what we do and how the NENG helps us achieve it.

For this we are truly thankful.



## Sheffield Says Goodbye to **GARETH JONES**

Pat Rogers

Gareth Jones is known to many in Nether Edge for his work as a Minister at a number of local churches and in the wider community. He, and his wife, recently left Sheffield.

Gareth Jones came to Sheffield ten years ago, with his wife Jean Allen, to be the minister of Endcliffe Methodist Church and St Andrew's Psalter Lane Church and for the past five years was also minister at Highfield Trinity Methodist Church. You may have seen Gareth walking round Nether Edge as he went to visit members of the congregation and their families or go to various meetings. During the pandemic, he went to great lengths to keep in contact with people, even sitting in gardens in the rain under an umbrella. Gareth is committed to improving the environment and was a keen supporter of the church Eco Group. He would drop in to support local groups like the Brownies, the Dementia Cafe, the Parent and Baby Group and Knit and Natter and he has an amazing capacity for remembering names! He regularly led assemblies at Clifford Primary School. Gareth came to Sheffield from a full-time post promoting interfaith relations and continued this work here in Sheffield. He also forged links with the Nether Edge Quakers who meet in Shirley House.

But Gareth was not just concerned with church activities. He and his wife, Jean, were both members of the Nether Edge Festival committee, leading several events and offering St Andrew's Psalter Lane as a venue, without charge. Jean organised the very successful festival craft fair, taking it online when the pandemic struck.

The couple have now moved to Edinburgh and we wish them much happiness in their new surroundings.

## Watering our new street trees

There is real concern amongst various tree groups about how they will come through one of the driest summers on record. Autumn is likely to bring more rainfall, but it is important that people who live near one of the new trees take on watering it regularly - perhaps with a small group of neighbours to share the responsibility? Some people are already doing this, but not all trees will be looked after. The new trees are such an asset to the neighbourhood and it would be a great shame if any didn't survive.



## Chelsea Park Scouts Bonfire

After two year's absence the Scouts' bonfire will return next month on Saturday 5th November in Chelsea Park  
Food from 5pm; Bonfire lit at 6pm; Fireworks at 7pm

## Advertising in Edge

### You can advertise here

Edge is produced 10 times a year and delivered by volunteers to over 900 homes in Nether Edge.

If you would like to advertise in Edge, please contact us at: [nengeditorialboard@gmail.com](mailto:nengeditorialboard@gmail.com)

**Charges are as follows:**

**EIGHTH PAGE: £20**

**QUARTER PAGE: £40**

**HALF PAGE: £80**

**FULL PAGE: £160**

Reductions available for advertising  
in multiple copies of Edge



# Archer Lane Allotment & Home Garden Society Annual Show



Saturday 3rd September saw the long awaited reappearance of one of the highlights of the Horticultural Year in Nether Edge. Archer Lane Allotment & Home Garden Society had been forced to abandon their last two Shows because of Covid, but at long last normal service was resumed.

Entry numbers were down compared with our 2019 Show, but the quality was most definitely maintained. A magnificent selection of vegetables, flowers and domestic produce drew warm comments from the judges.

After much deliberation, Marc Brew retained the trophy for most points in the Show and Bill Atherton closely followed in second place. Sophy Sylvester won the Novice Cup and Caroline Millman gained most points in the Domestic Section. In all there were 113 classes and the most popular was strawberry jam, closely followed by alcoholic drink. The extremely conscientious judge did not drive home!

New members are always welcome at the Society, and you don't have to have an allotment on the site – 50% of our members are home gardeners. Benefits to membership include access to our well stocked and competitively priced shop, a regular newsletter, the brilliant Seed Catalogue with high quality, low priced seeds and the opportunity to enter the Show.

Pop into the Pavilion every Sunday morning 10-12 or email [archerlaneallotments@gmail.com](mailto:archerlaneallotments@gmail.com) for details.

@ArcherLaneAllotments



## Bannerdale Osteopaths

“Really very good for my injury. Perfect recovery program and it works for me. Pooja is a wealth of knowledge and really pinpoints the areas that need work during each visit to help me to regain fitness.”

James, Happy Patient, 2021



Bannerdale Osteopaths, 5 Machon Bank Road  
Nether Edge, Sheffield, S7 1PE

0114 419 0173 | [www.bannerdaleosteopaths.com](http://www.bannerdaleosteopaths.com)





# CHARLIE JOLLEY

## Young talent in Nether Edge

Fifteen year old Charlie Jolley lives locally and recently entered a national competition run by The Poetry Society. The title of the challenge was 'Our Whole Lives, We Are Protest'. She came second with her poem, *We Tied Ourselves to the Nether Edge Tree*.

Charlie Jolley is a fifteen-year-old poet and screenwriter from Nether Edge. She is a member of Sheffield Young Writers and has been published in Hive anthologies Dear 2021, Dear Life, Land of Poets (Seren), and Chaos Dive Reunion (Mutabilis Press). She has performed her poetry at The Leadmill and headlined at the Making Waves Art Festival in Leeds. Her TV pilot Hitting the Wall won first place in the Screenwriting in LA Prize 2021, her short play Life on Zoom was performed at the Montgomery Theatre in 2021, and her comedy short Circle of Trust premiered at The Showroom Cinema in 2020.

She writes "I have always been very passionate about where I live and interested in local issues. As an aspiring writer, the common cliché 'write what you know' had often come in handy, as whenever I expressed my passion for Nether Edge in a piece of writing, it had always been well-received. The theme for the competition I entered was 'protest', which I was initially unsure of, as I had never attended a protest before, and therefore had no experience to draw from. But then I remembered the time and effort residents devoted to saving the Nether Edge tree. This was a scene I would often pass when walking to school, and so I wanted to illustrate that dedication and resilience in my poem. I decided to submit the poem to the competition as I thought it addressed the theme of protest on a local scale, making it more relatable, in contrast to all of these hard-hitting, global issues that we're faced with nowadays. I was delighted when my poem was placed second in the competition, as there were hundreds of other brilliant applicants!"

### We Tied Ourselves to the Nether Edge Tree

yesterday, early morning,  
so they could no longer ignore  
our green, painted skin and gel-penned  
objection. They could no longer

silence our potent door-go-bys,  
Moonpig pamphlets, and nature  
poems. The tree was tinsel  
with plaited rope: lank like vine,

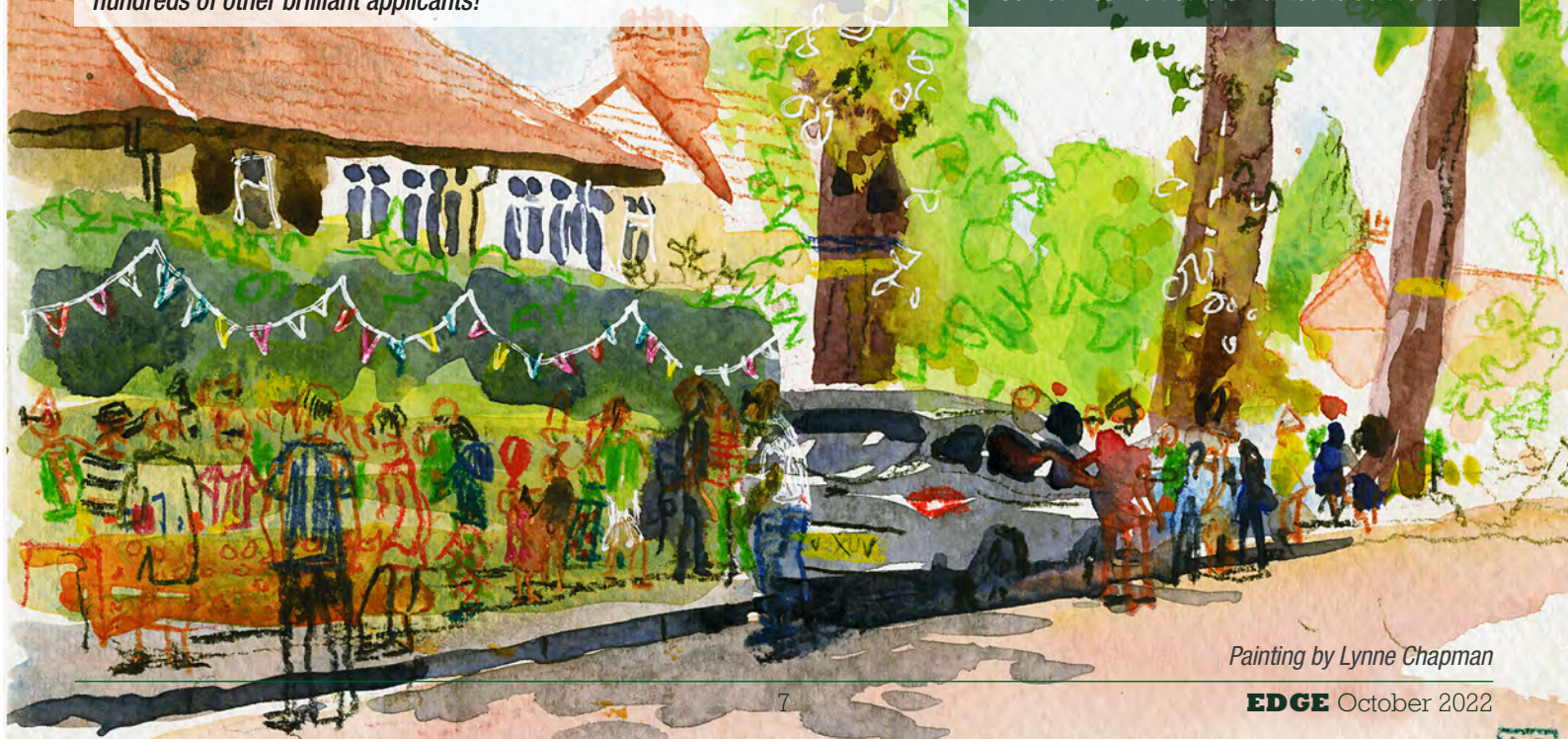
girl-scout-looped in clove knots  
between our legs and elbows,  
grating our wrists like rusted handcuffs.  
Peter and his I'm-so-quirky wife Anne

started busking, kick-box karaoke  
as the CD player flickered to Imagine,  
they strummed acoustic in a desperate  
Lennon-Ono duo. I wished someone

would have told them to stop. They  
really killed the atmosphere. Jana  
brought her labrador along, and tied  
its lead to the foot of the great oak.

After three verses of Give Peace a Chance,  
it wriggled from the clenched fist  
of the worn string, and sprung  
like a rolling yellow flame out of the park.

Sometimes I felt others wanted to do the same.



Painting by Lynne Chapman





# Nether Edge Active Neighbourhood - trying to understand it

Ken Lambert

## Where did the initiative come from? -

There have been numerous theories in the increasingly vitriolic posts in the “Only in Nether Edge” pages of Facebook. *“it’s all a plot by the Greens”*; *“it’s the b\*\*\*\*y Council”*; *“this all the fault of NENG”* (heaven forbid) etc etc. In fact the initiative came from the Sheffield City Region (now the South Yorkshire Mayoral Combined Authority), which put in bids for funding to the central government Department for Transport from the Transforming Cities Fund and the Active Travel Fund. The former (which closed for applications in 2018) is “aimed to improve productivity by investing in public and sustainable transport infrastructure in English cities”. Funding granted was £4.2 million in the first tranche and £166.3 in the second tranche, across South Yorkshire. This includes funding of £7.9 million for the so-called Nether Edge Wedge (anybody heard of that? It is not a type of haircut). This somewhat bizarre name has been given to the City Centre to Nether Edge cycle route, which unfortunately will end at Priory

Place and not actually connect with the Nether Edge Active Neighbourhood, leaving cyclists to brave the traffic on Montgomery and Moncrieffe Roads. It is called joined up thinking.

*The Active Travel Fund*, intended to support local transport authorities with producing cycling and walking facilities was granted in two bits – the first for temporary projects during the Covid 19 pandemic (eg those in Sheffield City centre), and a final allocation of £2.7 million for longer term projects, which includes the Nether Edge one, but I have not been able to find out the funding for this.

**Connecting Sheffield** – the various projects from both funds in Sheffield are run through a partnership, comprising:-

*Sheffield City Council* - delivering the Connecting Sheffield project

*South Yorkshire Mayoral Combined Authority* - responsible for ensuring the benefits of the Transforming Cities programme are delivered

*Counter Context* - managing the consultation on behalf of Sheffield City Council (Note: Counter Context is “a specialist communications, PR and public affairs company” according to their website).

## Why Nether Edge? - a very good question.

Howard Fry, NENG Secretary (who lives in the affected area) and I attended a consultation meeting held via Zoom in July 2021. This was hosted by Counter Context, though we were a little disconcerted that the leader left, presumably for something more important, before the end of the meeting. It was explained that the benefits of an Active Neighbourhood were:-

- Safer roads and streets as traffic is slowed down in some areas
- Increased confidence to safely walk or cycle to get around a neighbourhood
- A reduction in through traffic
- A nicer environment for people to spend time outside
- Reduced pollution, improving air quality and the health of local people





Nether Edge had been identified as a suitable area, based on the opportunities it would open up for people to travel more actively around the area.

Howard and I were rather bemused when one of the consultants said Nether Edge was flat (as you know, it is hard work to walk or cycle up to Brincliffe Edge Road, even for the most active) and after responses pointing out that this was not correct, they conceded "it is not as steep as Crookes". Another supposed reason was that many Nether Edge residents already walked or cycled, making us suggest that selecting an area where this was not the case might have been more appropriate. They were also not aware that most of the roads in the selected area already have speed bumps and/or a 20mph speed limit.

One of the attendees made a well-argued case in the context of safer walking to school for children, for pedestrian controlled traffic lights to be set up on Osborne Road and Psalter Lane. This was rejected as being outside the chosen area, though the work was actually carried out (mainly covering the long school holidays). It made us ponder as to whether the long sought after crossing on Psalter Lane by Southcroft might have been established if somebody could have made similar representations at the meeting.

### What happened next?

A consultation report dated October 2021 was put on the Connecting Sheffield website only in April 2022. It was essentially page after page of comments that people had submitted, with no overarching conclusion or recommendations. Then out of the blue came notice that "it has been decided" (by whom and how?) to block Archer Lane and Union Road and make the bottom end of Nether Edge Road one way. No explanation as to why and no advance warning of closing Archer Lane, other than an Experimental Traffic Regulation Order (ETRO), somewhat undermined in the first attempt by misnaming Edgedale Road as the non-existent "Edgefield Road".

Only the Archer Road closure has happened, plus the two pedestrian crossings mentioned above. In simple terms, residents at the Ashland Road end of Brincliffe Edge Road seem content that there are fewer cars. Residents at the other end and on Bannerdale Road are not happy, but probably not as unhappy as residents living

with perpetual traffic queues and resulting fumes on Sheldon Road and Abbeydale Road. It looks as though the proposals for Union Road and Nether Edge Road will not happen.



### Evaluation?

As a retired civil servant, it was considered good practice, and indeed essential, for any new initiative to set measurable objectives, have a baseline and then measure any changes against the baseline after a set period to see if the objectives had been met. Pretty basic stuff. This activity seems to be missing.

So, looking at the five benefits mentioned above, have they been fulfilled or will they be by the end of the six month experiment? Impossible to tell objectively, but I know what I think. What do you think?

*[Disclosure. I do not drive a car or ride a bike and live outside the maelstrom of the Active Neighbourhood on Thornsett Road, which has few cars, probably owing to the awful state of the road].*

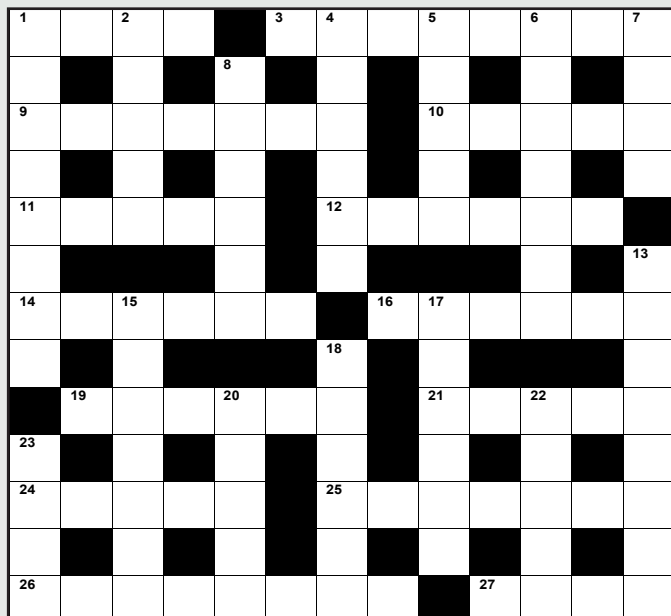




# SPRAT'S THIRTEENTH CROSSWORD

Some of the clues are blank. These are all local street names.

Answers on page 13



## Across

- 1 Small duck (4)
2. Popular breed of dog (from Canada?) (8)
9. Exotic breed of pond fish (3,4)
10. Period of keeping watch (5)
11. Type of tree (5)
12. Large American bird of prey (6)
14. Gambling house (6)
16. Extend (6)
19. Small South African antelope (6)
21. Most suitable (5)
24. Not In My Back Yard (1,1,1,1,1)
25. Vermouth (7)
26. Red root vegetable
27. Green semi-precious stone (4)

## Down

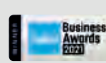
1. Retrieve (4,4)
2. Able to move quickly and easily (5)
4. South American animal (6)
- 5.
6. Hedgerow flower
- 7.
- 8.
- 13.
15. Scottish communal wash house (7)
- 17.
18. Hands on hips (6)
- 20.
22. Heather (4)
- 23.



Designed and crafted with the future in mind.

Using a combination of **high-quality** fixtures and fittings, and **eco-friendly** materials, whether it's high recycled content, reclaimed or sustainably sourced, we create living spaces that are **designed and built to last for decades**.

At Sheffield Sustainable Kitchens, we plan, design and fit beautiful **bespoke** kitchens, bathrooms, **utility** and boot rooms, **wardrobes**, **home offices**, **fitted shelving** and more.



Call us today on 0114 250 9078 or see our website for more information: [www.ssk.uk.com](http://www.ssk.uk.com)



Sheffield Sustainable Kitchens

Quite simply, thoughtful design, quality materials, made to measure and built to last. Let us help you create your perfect kitchen.



## Pets at Rest vet home visits



pets at rest veterinary care



[www.petsatrestvet.com](http://www.petsatrestvet.com)



07866243673



[petsatrestvet@gmail.com](mailto:petsatrestvet@gmail.com)

final farewells in familiar places

## NETHER EDGE FAIR

Support local independent makers:  
Art & Jewellery; Body & Bath;  
Crafts & Clothes; Eco & Charity;  
Food & Drink; Garden & Outdoors;  
Home & Toys

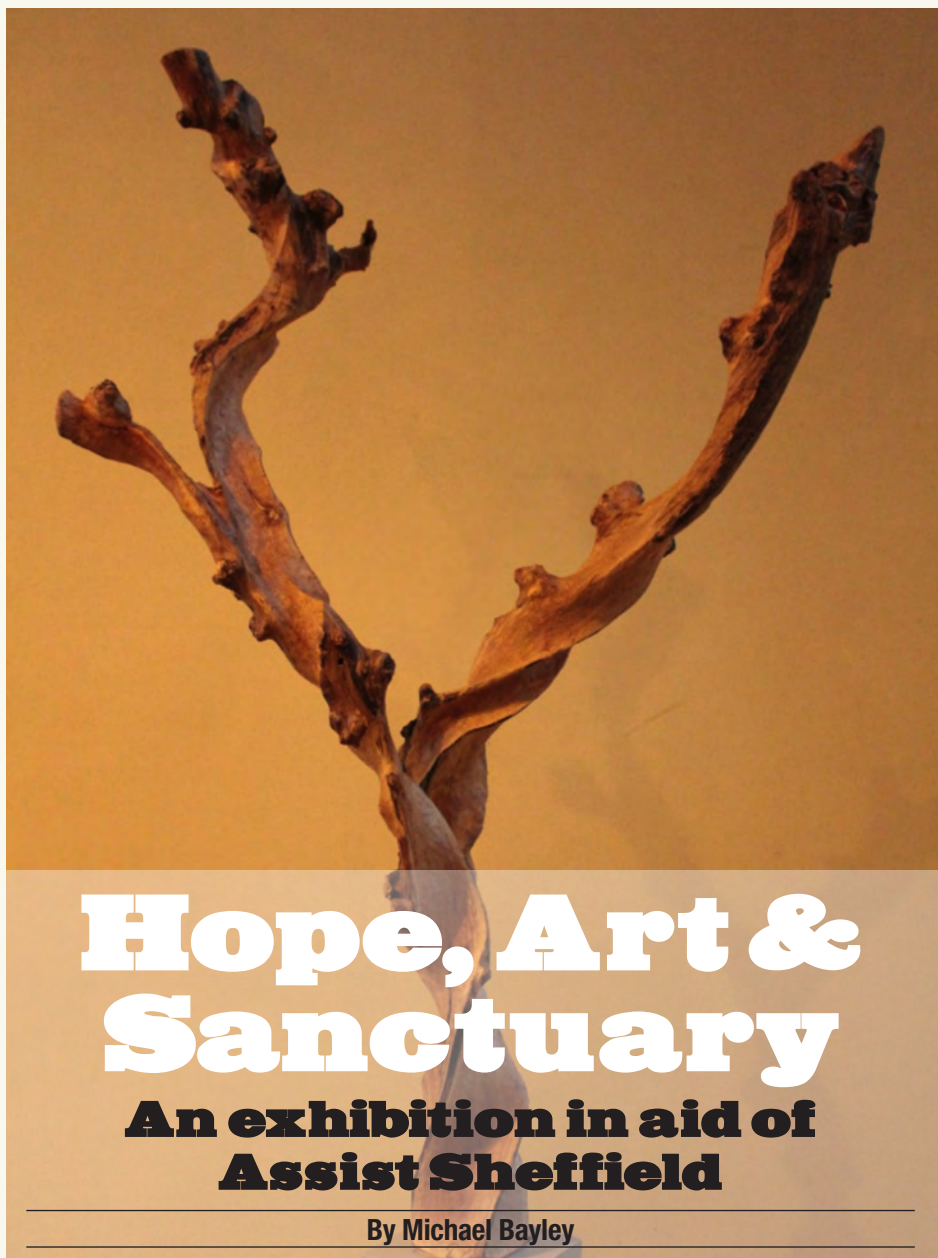
For Birthdays, Anniversaries,  
Every Day

FREE Personal Present Shopping Service  
available: [jlallen1812@gmail.com](mailto:jlallen1812@gmail.com)

<https://www.netheredgefair.com>

(After website costs) every penny goes to charity





# Hope, Art & Sanctuary

## An exhibition in aid of Assist Sheffield

By Michael Bayley

The exhibition will be held in Highfield Trinity Methodist Church on London Road close to Highfield Library. It will be open from 11am to 5pm on Thursday 6 and Friday 7 October. On Saturday 8 October it will be open again from 11am culminating in an auction at 6:30pm of the items which have not been sold already.

This sculpture is where the idea for this exhibition started. The attractive contorted willow tree in our garden died in the bitterly cold January of 2010. I kept the remains of the tree because the shapes were intriguing. I found this piece especially fascinating and spent about two or three years working on it. I then realised that it looked a lot better if it was mounted. However, by the time it was mounted it stood about 7 foot high and was too large to go anywhere in our house.

This developed into the idea of an exhibition

of my carvings over the past 40 years. The whole venture received a major boost when my friend and neighbour, Kevin Bonnett, accepted my invitation to show some of his superb photographs. It became evident that there is a creative overlap in the approach each of us take to our work. Kevin says of his work: "(My) primary aspiration is towards creative work where the visual individuality of the image stands for itself and stimulates some (implicit) dialogue with the viewer.

Where elements of abstraction or ambiguity dominate the image this aims to provoke a creative response from the viewer in terms of their own emotion or imagination, which may or may not coincide with my own motivation for creating the picture".

Most of my work is abstract. I find that what I am doing is exploring what seems to be emerging from the wood itself. I probably spend as much time looking and

wondering what to do as I do in the actual coming. You will notice that the titles I have given to the pieces are generally designed to make it easy for the viewer to put their own interpretation on it. For example the big carving illustrated at the head of this article is called "Ascending Willow". It was the first carving I made from the remains of the contorted willow and people can and do put very different interpretations on it. I think the exhibition will be richer for having the contrasting media combined with some similarity in our approach.

You can view the items which will be on display in the exhibition on our website – [hopeartsanctuary.co.uk](http://hopeartsanctuary.co.uk)

We hope that this will be more than just an opportunity to look at and perhaps buy some interesting photographs and carvings. Art has the great advantage that it does not have to use words. It can give expression to our innermost and often incoherent fears, hopes, desires, and aspirations. We live in an age which is anxious with good reason, with the climate and refugees being close to the top of that list. Yet human beings continue obstinately to hope for and work for better days and a more just world. This is reflected in the title of the exhibition starting with Hope, finishing with Sanctuary.

This is what led us to decide that all the profits from the exhibition should go to ASSIST Sheffield. ASSIST Sheffield works with people who are seeking sanctuary and who have been refused asylum. They provide accommodation, information and other support. They are a charity and rely on volunteers, grants and the generosity of the people of Sheffield and the surrounding area. People who are refused asylum and, as a result, are made destitute, and feel dehumanised and degraded by the experience. ASSIST aims to give them the resources, support and dignity they deserve.

The need for their help only increases as events in Ukraine remind us so agonizingly. There will be the opportunity to learn more about the work of ASSIST at the exhibition. More information about ASSIST can be found at [assistsheffield.org.uk](http://assistsheffield.org.uk). I'm sure you will feel that this is an organisation which deserves our generous support.





# Nether Edge BAME Women's Page



## Hui

**My name Hui, from China. Now I'm a student at the University of Sheffield and volunteering in Nether Edge.**



## Calligraphy

**Chinese calligraphy is a form of aesthetically pleasing writing (calligraphy), or, the artistic expression of human language in a tangible form.**

**This type of expression has been widely practiced in China and has been generally highly esteemed in the Chinese cultural sphere.**



## Tangyuan

**Tangyuan is the traditional food for the Lantern Festival or Yuanxiao Festival. The small dumpling balls are usually made of glutinous rice flour.**

**Made of sticky rice flour filled with sweet stuffing and round in shape, it symbolizes family unity, completeness and happiness.**



## Traditional Clothes



**China's complete code of costume and trappings was established in the Han Dynasty(206BC-220AD).**

**The yarn-dying, embroidering and metal-processing technologies developed rapidly in that period.**

**The main feature of Hanfu is wrapping the right side over before the left.**

**If you are a BAME woman in Nether Edge and would like to contribute to this page please contact us on: [info@familyvoicesheffield.org](mailto:info@familyvoicesheffield.org) / 07951510366**





# ANNUAL ST ANDREW'S PSALTER LANE MUSIC FESTIVAL

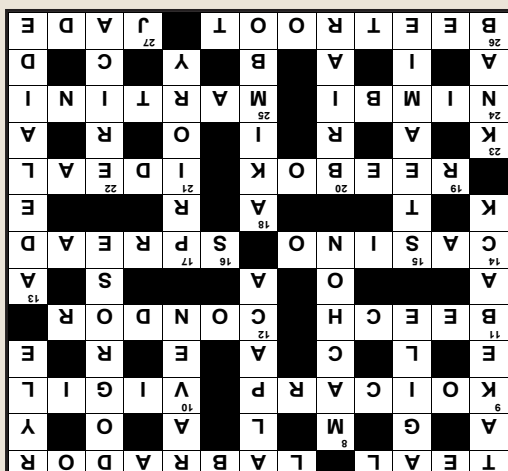
Thursday 10 – Sunday 20 November 2022

This year the annual festival features a lot more local singers. The new Festival Director, Gavin Usher, is well-known as an experienced conductor, professional violinist and teacher. His cabaret-style Cutting Edge theatre has brought scores of young people forward to perform solo work. Sheffield City Choristers (*pictured above*), Sheffield Chorale, and the special Stephen Sondheim concert are choral features with Sheffield children appearing in the Concerteenies and the Sheffield Academy events. The famous singer, John Savournin, will finish the festival on Sunday 20 November - a spectacular finale to this year's concerts.

For those who enjoy hearing world class performers at only £5 a ticket (children free) the return of the popular Villiers string quartet on Sunday 13 November promises to be a big draw. But to appreciate the musicianship of our local players, don't miss the Sheffield horn quartet in the opening concert accompanying the Sheffield Steel City Choristers or Polly Virr and the Steel City Strings on Saturday 19 November.

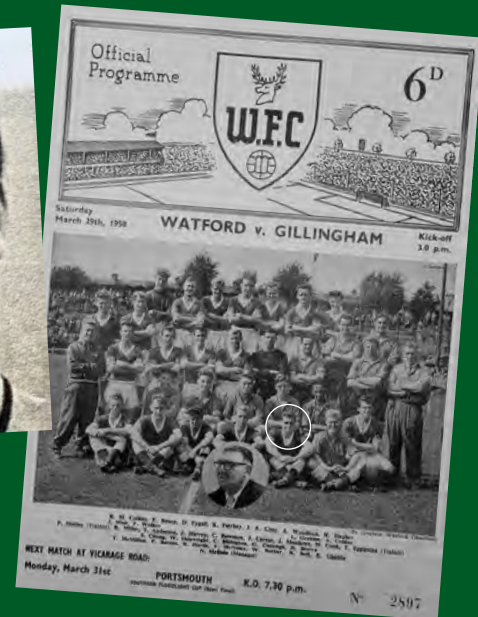
Full details on [www.samfest.uk](http://www.samfest.uk)

## CROSSWORD ANSWERS



# Bill Barber Professional Footballer

Ruth Bernard



Bill Barber is a former Watford Football Club player currently living in Prior Bank Care Home. Simone Clover, the manager of Prior Bank, had contacted Watford Football Club about Bill and they arranged for him to attend a match between Watford and Manchester City, in Manchester.

Bill was born in Bushey, Hertfordshire, and played in the local school league. He joined Watford as an amateur in 1956 and turned professional in 1957. He played four seasons with Watford, as a wing half. He made 25 appearances for Watford, including playing in the FA Cup. While Bill was playing for Watford, they achieved promotion from the old Division Four. When he left Watford, he played for Aldershot Town FC for one season, helping the side achieve a top half finish. The current salary for a Watford football player is £80,000 a week. The wages at the time Bill was playing were between £10 and £20 per week, in the playing season. The average wage in 1960 was £14 per week.

After National Service, a year of which was spent in Kenya, Bill continued his playing career in Australia, where he played for a number of teams including the George Cross Soccer Club, who became champions of Australia in 1964. During his time in Australia, Bill says that he played against George Best, assuring his family that he taught 'Besty' everything he knew. Records do show that George Best was in Australia in 1964.

On his return from Australia, Bill joined the Prison Service in Wakefield. His wife, Christine, is from Sheffield and he moved here in in the early 1990s.

Bill had a wonderful day in Manchester, with his stepson and a carer from Prior Bank, in April this year. Unfortunately, Watford lost to City by 5 goals to 1, but Bill still enjoyed himself. He was presented with a Watford scarf by a Watford supporter. He is still a keen football fan, his favourite team being, of course, Watford, but also Arsenal. Watford are currently in the Championship, the old division 2, the stadium is Vicarage Road, as it was in 1957 when Bill was playing.



## Union Hotel

Union Road, Nether Edge

The popular **Monday Night Pub Quiz** starts at 9pm. All welcome.

**Wed 5th October** 9pm. Monthly Pop Quiz, Union Hotel, Union Road, Nether Edge. Get there early to get a seat.

## Byron House

Nether Edge Road, S7 1RU

**Quiz night - Every Sunday** at 9.30pm. Cash prizes to be won.

## Nether Edge Bowling Club

Nether Edge Road, S7 1RU

**Nether Edge Folk Club** meets every Wednesday at 8-10.30pm. Complete novices and experienced performers are all very welcome at the Nether Edge Bowling Club. *For further information see website. [netheredgefolk.club](http://netheredgefolk.club) or email: [folkclubnetheredge@gmail.com](mailto:folkclubnetheredge@gmail.com)*

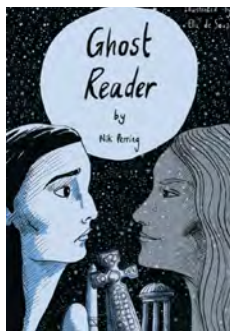
## Sheffield Cemetery Trust

**Sun 2nd Oct** 1.30-3.45pm **History Tours**. Ever wanted to learn more about Sheffield's Victorian History? Why not start with a fascinating guided tour of the Grade 11 listed historic Cemetery. Meet at the Gatehouse at the top of Cemetery Avenue. Contact [sgct@gencem.org](mailto:sgct@gencem.org) for updated information. *Tickets are £5 per head and can be booked through [gencem.org/new-events](http://gencem.org/new-events) or directly at [ticketsource.co.uk/sgct](http://ticketsource.co.uk/sgct)*

**Sat 22nd Oct-Sun 30th Oct. Halloween in The Cemetery**. Film Screening and Guided Walk. *Contact [sgct@gencem.org](mailto:sgct@gencem.org) for updated information. Tel 0114 268 3486*

**Sat 29th Oct. The Haunted Hills** a ghost story for children. 'Berlie Doherty is celebrating 40 years of being published in 2022 and has a new book for older children aged 11-14 years- The Haunted Hills. It is a ghost story set in the Derwent Valley and is beautifully illustrated. *Follow [sgct@gencem.org](mailto:sgct@gencem.org) for updates for this event.*

**Sat 29th Oct. Ghost Reader** by Nik Perring, illustrated by Ella de Souza. Meet author and illustrator in the very place the book is set. Write and illustrate a story with your own ghost character. A children's event 9-12yrs old, under 11s must be accompanied by an adult. *Tickets £3/ accompanying adults free. Follow [sgct@gencem.org](mailto:sgct@gencem.org) for updates of this event.*



## Abbeydale Picture House

387 Abbeydale Road S7 1FS



**Sat 1st Oct** 6.00-10.30 (performance starts at 7pm) **Dean McPhee** (pictured), **The Universal Veil**, and **Slug Milk** perform in the magnificent Fly Tower of the Abbeydale Picture House. An evening of lucid guitar, improvised drones, and experimental sonic folk art. *Tickets £7.00*

**Sun 2nd Oct** doors open at 2.30pm film starts at 4pm. **Snake in the Eagle's Shadow** (1978). A rare screening of this classic Kung Fu masterpiece starring superstar Jackie Chan. *Tickets £5.98 from [www.eventbrite.co.uk](http://www.eventbrite.co.uk)*

**Sun 9th Oct** doors open 2.30pm film starts at 4pm. Reel Steel present a screening of a film that spent nearly four decades in cinema obscurity- **New York Ninja** (1984) *Tickets £5.98. from [www.eventbrite.co.uk](http://www.eventbrite.co.uk).*

## Café#9

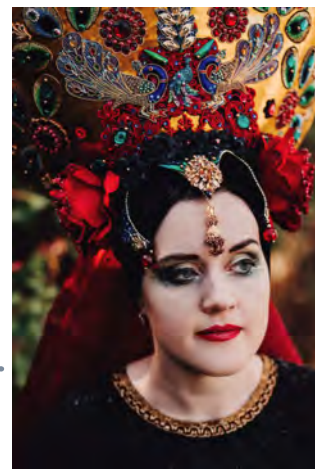
Nether Edge Rd, Sheffield S7 1RU

**Fri 28th Oct** 7pm. Yorkshire Folk singer, **Jack Rutter** has established himself as one of the standout voices of the folk, roots and acoustic music scene performing at Café#9. *Tickets £13.75.*

**Sat 29th Oct** 7pm. **Daria Kulesh** (pictured) with her striking voice and strong Russian heritage, Daria is making a name for herself as a unique singer-songwriter. *Tickets £13.75.*

**Sun 30th Oct** 7pm. A night of solo flamenco and jazz guitar. Join us at Café#9 for what promises to be a stunning evening, featuring **Samuel Moore** - flamenco guitarist and Jamie Taylor - jazz guitar. *Tickets £16.50.*

*All Café#9 tickets from [WeGotTickets](http://WeGotTickets)*





## Lantern Theatre

Kenwood Park Road S7 1NF



**Nightmare Magic Fri 30th Sept - Sat 1st Oct** 7.30 - 8.45pm. Following a sold-out run at the Edinburgh Fringe Festival, writer, actor and magician David Alnwick (*above*) presents a ghost story told using magic. (Age limit is 15+)

**The Antics: A Night of Improvised Comedy. Sat 8th Oct** 7.30pm. Expect a fast-paced evening of different characters performing unique sketches and punny one-liners. All scenes are made up completely on the spot, based on live audience suggestions.

**New Writing Festival: Anniversary Special Part 1. Wed 12th Oct - Sat 15th Oct** 7.30pm. We'll be bringing the usual mix of brand-new shorts and one-act plays, and, to celebrate ten years of the festival (technically it was last year but we were closed due to the pandemic), we'll be showing a few favourites from previous years.

**New Writing Festival: Anniversary Special Part 2. Wed 26th Oct - Sat 29th Oct** 7.30pm. The New Writing Festival is back for the second part of its Tenth (And a Bit) Anniversary Special.

*Ticket prices vary and may be booked through TicketSource: 0333 666 3366 (a booking fee is payable on all card transactions) or in person at the Lantern on event nights between 6.30 and 7.30pm. The theatre is cashless.*

## All Saints Church Ecclesall

**Sat 1st Oct** 5.00 - 7pm. **Abbeydale Singers with Reading A440 Choir** - a concert, ceilidh and pie and pea supper. *Tickets from Eventbrite. Full price £15 (includes a free glass of wine). Concession £12, Students £7.00*

## St Andrew's Psalter Lane Church

**Psalter Lane**

**Garden Working Party. Sat 1st Oct.** Anytime between 9.30am and 12.30pm.

Join our team to help with the gardening of the church grounds. All welcome each first Saturday of the month, except January. Refreshments at around 11am.

## Hope, Art and Sanctuary



**Thur 6th and Fri 7th Oct** 11.00-5pm and **Sat 8th Oct** 11.00-9pm with Auction at 6.30pm. An exhibition of photographs and carvings by Kevin Bonnett and Michael Bayley in aid of Assist Sheffield at Highfield Trinity Church. [www.HopeArtSanctuary.co.uk](http://www.HopeArtSanctuary.co.uk)

## Family Voice

**Gentle Yoga. Tuesdays** 1.45 - 2.45pm in school term time

**English Conversation Class.**

**Wednesdays** 1pm - 2.30pm in school term time

Both at Common Ground, Woodstock Road. Free. Women only. *Contact Family Voice 07951510366A*

## Elsewhere near Nether Edge...

### Woodland Walk in Ecclesall Woods

**Sun 2nd Oct** 10am - 11.30am / 12pm - 1.30pm / 2.30 - 4pm Meet outside the main entrance to the **Woodland Discovery Centre**. Want to learn about trees in a fun and informal way? The diversity of tree and plant species found in this, South Yorkshire's largest ancient woodland, makes it the ideal location to experience everything you ever wanted to know about woodland ecosystems. The main theme of this 90-minute walk will be autumn tree ID, using leaves and bark to tell trees apart. Some slopes and possibly muddy paths. *Tickets for adults £4.90 from Eventbrite. Children under 14 free. Maximum group size 20.*

### Lunchtime Talk: A History of Abbeydale Works

**Thurs 6th Oct** 1pm - 1.45pm. **Abbeydale Industrial Hamlet**, Abbeydale Road South S7 2QW. Discover Abbeydale Industrial Hamlet's journey from being an operating scythe and steel works to becoming a public museum. *Free. Register with Eventbrite.*

### Makaton Level 2

**Fri 7th Oct** 9am - 3.30pm **Fusion SEND Hub**, Talbot Specialist School, Lees Hall Road, S8 9JP. Each Makaton Level is a one day 6-hour accredited course. You must have progressed through each level before attending the next. *Cost £69 per person per level. Book with Eventbrite.*

### Pooches in the Park

**Sun 16th Oct** 11am - 3pm. **Millhouses Park**, Abbeydale Road South. Sheffield's leading Dog Show and Artisan Market. Helping to raise funds for Thornberry Animal Centre. *Free entry.*

### Sheffield Brickfest 2022

**Sat 22nd Oct** 11am - 4pm. **High Storrs School** High Storrs Road. Awesome LEGO displays and activities by the Master Builders of Sheffield LEGO User Group and friends plus tons of amazing traders. *Tickets from Eventbrite: Early doors £10; General admission 11am entry £6; General admission 1pm entry £6; Last hour £3. Walk-ins available at £7 on the door, payment via cash or card with access from 1pm via non-priority queue. Helping to raise funds for Fairy Bricks.*





The Nether Edge Neighbourhood Group was set up in 1973 with the following aims:

To improve the conditions of life especially of those living or working in the areas of Brincliffe, Nether Edge and Sharrow in Sheffield, without distinction of sex or race, or of political, religious or other opinions, by associating with local authorities, voluntary organisations and residents in a common effort to advance our education, to improve the environment and to provide facilities in the interest of social welfare for recreation and leisure time activities.

Company limited by guarantee No. 07414080 Registered charity no 1139239

**Individual views expressed are not necessarily those of the group**

**We always welcome new members, whether you want to catch up with local news, get involved in any of our groups, or just support our work. Membership costs £10 per year and you will receive ten editions of The Edge - the NENG newsletter.**

*For further details email [ken.lambert227@gmail.com](mailto:ken.lambert227@gmail.com), visit our website [www.netheredge.org.uk](http://www.netheredge.org.uk) or scan this QR code*

*Drone photography on cover and page two courtesy of Oliver Houfe*



**[www.netheredge.org.uk](http://www.netheredge.org.uk)**