



NENG

EDGE

Nether Edge Neighbourhood Newsletter
March 2022

£1.50 or free to subscribers

ANNUAL REPORT EDITION



www.netheredge.org.uk



The Nether Edge Neighbourhood Group was set up in 1973 with the following aims:

To improve the conditions of life especially of those living or working in the areas of Brincliffe, Nether Edge and Sharrow in Sheffield, without distinction of sex or race, or of political, religious or other opinions, by associating with local authorities, voluntary organisations and residents in a common effort to advance our education, to improve the environment and to provide facilities in the interest of social welfare for recreation and leisure time activities.

Company limited by guarantee
No. 07414080

Registered charity no 1139239

**Individual views expressed
are not necessarily those
of the group**

EDGE MARCH 2022

This issue of EDGE was edited by Ken Lambert

Design & artwork: Stephen Houfe (stephenhoufe@gmail.com)

If you want to contribute to the March edition, please contact the
EDGE Editorial Board – nengeditorialboard@gmail.com

NENG Committee Members

* indicates Trustee / Director

* **Ken Lambert** (Chair, Company Secretary & Membership Secretary)
32 Thornsett Rd S7 1NB. 07518 118789 ken.lambert227@gmail.com

* **Mazhar Hussain** (Vice Chair)

* **Howard Fry** (Secretary & Market) 20 Chelsea Road S11 8BR
howard.fry@icloud.com

David O'Connell (Acting Treasurer) 9 Cherry Tree Drive S11 9AE
nengtreasurer@gmail.com

Tayab Fayaz (Accountant)

* **Richard Taylor**

* **David Pierce** (Market & EDGE Editorial Board)

* **Nicky Erlen** (EDGE Editorial Board)

Vicky Phillips (Festival, netheredgefestival@gmail.com)

Helen Willows (Planning)

John Austin (History Group)

Ruth Bernard (EDGE Editorial Board)

Kevin Hickey (EDGE Editorial Board)

Pat Rogers, Minutes Secretary

Rosalind Watchorn

Kate West

Kevin Bonnet

Stephen Houfe

To contact
individual members
of the committee or for
contact details of the various
sub-groups, please go to the
NENG website :
www.netheredge.org.uk/

Nether Edge Neighbourhood Group Application for Membership/renewal

I wish to join / continue to support* the Nether Edge Neighbourhood Group (NENG) and receive the 'EDGE' magazine by hand delivery / by email* and enclose / have sent* my annual subscription of £

**Please delete as appropriate*

Name

Address

Postcode

Tel

Email

- Your contact details will only be used in connection with your EDGE subscriptions or NENG membership.
- The annual subscription for EDGE is £10 per household, commencing on 1st April each year. Any additional donation to the work of NENG is welcomed.
- Subscribers living outside our distribution area will only receive electronic copies of EDGE, or you can choose to receive EDGE by email by selecting this method above.

Cheques should be made payable to **NENG**, but please bear in mind that everyone in NENG is a volunteer, so we would far prefer to receive payment by Standing Order or by bank transfer (Sort code 30-97-51 A/C 36208368 NENG), as this greatly reduces the administration burden on both your local EDGE distributor and on NENG itself. Copies of a Standing order form (you can alternatively set one up online) to send to your Bank are available from ken.lambert227@gmail.com whom you should advise when you have set up a standing order or made a bank transfer so that records can be updated.

Signature

Date

As a local resident/ supporter of NENG, I also wish to become a full Member of NENG, a company limited by guarantee, which entitles me to full voting rights at the AGM, receive regular copies of EDGE and fully participate in its activities. In the unlikely event that the Company has to be wound up, I agree to pay the sum of £1 towards its debts if asked to do so. I understand this liability will continue for one year after I cease to be a member of the company.

PLEASE NOTE: Should you prefer **not** to become a full member of NENG you still can be just an EDGE subscriber by deleting the section in italics above. This entitles you to receive copies of EDGE but no entitlement to vote. The annual subscription is the same.

EDGE EDITORIAL

Ken Lambert (NENG Chair)

The photos on the front page are meant to show what makes us smile when we are out and about in Nether Edge, and what makes us frown. The delightful and intricate crochet works that decorate some of our postboxes are just wonderful, with many thanks indeed to the mystery person who is making and fitting them. On the other hand the ex Nether Edge News is an eyesore; NENG has been trying for nearly a year to do something about it and the article on page 5 sets out what we have been doing and the problems that we face..

As a registered charity and company limited by guarantee, we are required (quite rightly) to hold an Annual General Meeting (AGM) that allows the officers

and committee to explain what they have been doing over the year. It also allows members to learn and ask questions about the work and plans of the many sub groups. As last year, the people who lead the activities in the sub groups will give a short presentation and answer any questions. After a lot of debate in the NENG committee, we decided that it would be best to again hold the AGM online via Zoom; last year's AGM using this medium was well attended and did allow more participation that we had anticipated, which has got to be a good thing. Details of how to register for the AGM are set out on the agenda page. I do encourage you to join in.

CONTENTS

Nether Edge And Sharrow Sustainable Transformation	4
..DGE News - What Is To Be Done?....	5
The Rotary Club of Sheffield Vulcan ...	6
Mums United	7
Letters	8

NENG AGM

Agenda	10
Chair's Report	10
Group Reports:	
Nether Edge Farmers' Market.....	11
Nether Edge Festival.....	11
History Group Report	12
Friends Of Brincliffe Edge Wood ...	13
Nether Edge Art Club Report	13
Nether Edge Open Gardens	14
Edge Editorial Board Report	15
Plastic-Free Toy Rental.....	16
Mountain Hares Of Sheffield.....	17
What's On in March.....	18

NENG AGM

The NENG AGM will be on Wednesday 30th March at 7pm on Zoom

In order to attend the AGM, you will need to register in order to obtain the Zoom meeting ID and password.

To do this, email your name(s) and address to ken.lambert227@gmail.com and a few days before the meeting we will send you instructions on how to log in to the meeting.

Annual Subscriptions

This is a reminder that annual subscriptions of £10 for 2022-3 are due from the 1st April. A subscription provides you with 10 copies of the EDGE magazine over the year and also helps NENG to fund activities that benefit the community in Nether Edge, Sharrow and Brincliffe.

It would be really helpful if subscriptions could be paid as early as possible in the new operating year.

There are a number of ways to make a payment:-

By standing order – most of the standing orders for 2021-2 were made at the old rate of £8/£5. Could those who already pay by standing order, which is our preferred method, please amend the amount for 2022-3 to £10. This can be done online or if desired, a form to send to your bank can be obtained from the NENG website or by contacting me. So that we can more easily update the records, could you please use your address as the reference.

By bank transfer ('BACS') – NENG bank account information and my contact details are on page 2. Could you please use your address as the reference and it would also help update the records if you emailed/texted me with your address after making the bank transfer.

By cheque – made out to 'NENG' and posted to 32 Thornsett Road, Sheffield S7 1NB* (or dropped through the letter box).

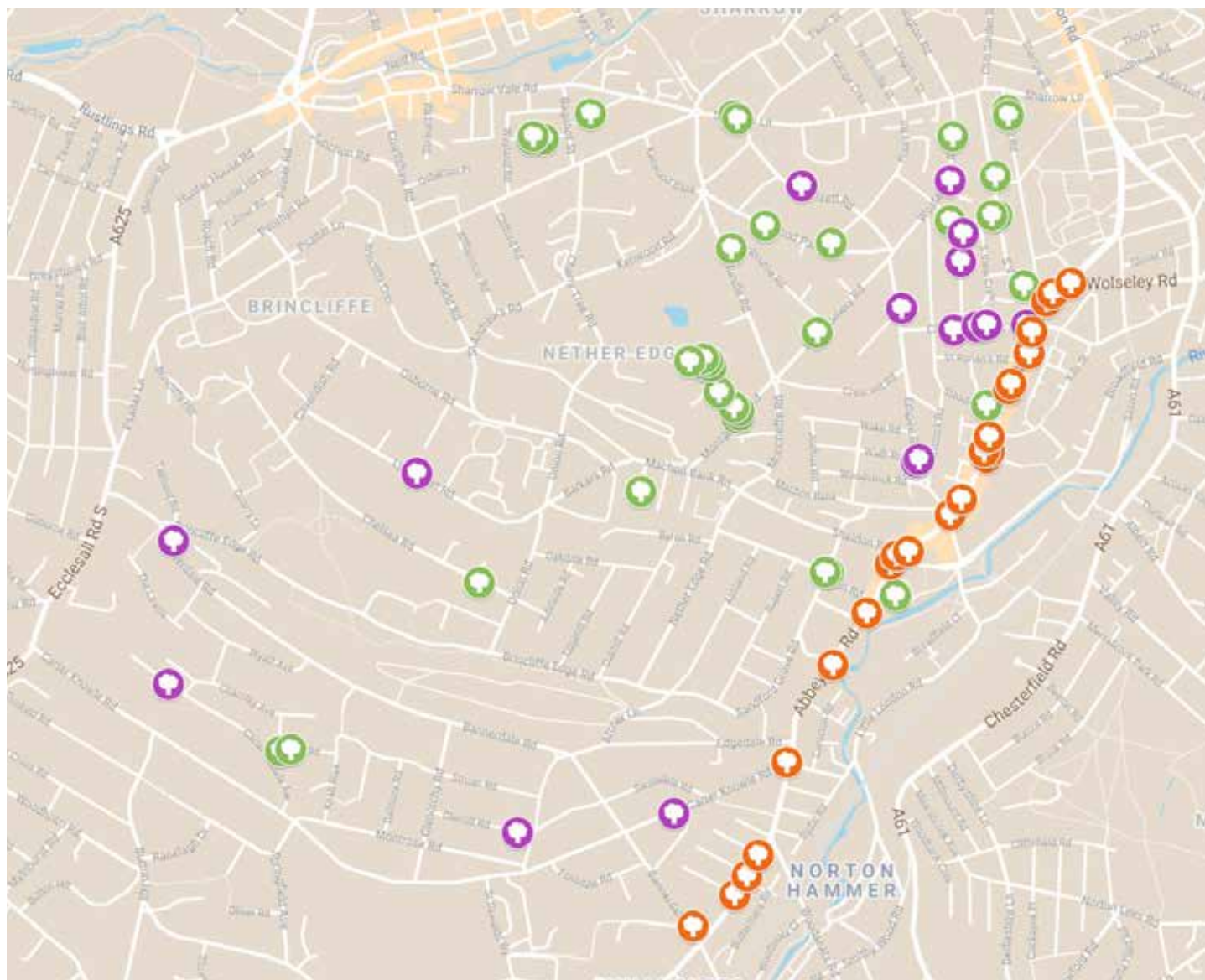
** Please use this address for cheques, not the one printed in the February EDGE*

By cash – some of the EDGE distributors have continued to collect cash, though please note that not all wish to do so, so the other means above are preferred. Cash in an envelope can also be dropped through my letter box, but do remember to include your name and address

Ken Lambert

NENG Chair and Membership Secretary (32 Thornsett Rd S7 1NB)

Update from **Nether Edge and Sharrow Sustainable Transformation (NESST)**



Paul Selby

Regular readers will remember that NESST is the successor group to the local street tree campaign group, that successfully prevented half of our local street trees from being felled. NESST has had a hugely successful 2021, as we continue to move towards having projects with a wider environmental aim.

In March 2021, we piloted a project called the Buckthorn for Brimstone's initiative. Later, in October, we partnered with Sheffield and Rotherham Wildlife Trust to expand the scale

of the initiative to the whole of Sheffield and Rotherham. We bulk purchased small whips of a native bush called Purging Buckthorn, and sold them at £3 a whip to anyone willing to plant them in their garden or land. We sold 543 whips in total to 140 people, half of them in the S7 and S11 postcodes. In five to ten years time we anticipate an explosion in the local Brimstone butterfly population, which only lays its eggs on Buckthorn species.

But our most impressive impact is only being seen currently. Since January, 80 new street

trees have been planted locally, the first increase in street tree numbers since the 1970s. 24 of these trees were funded by the amazing Abbeydale Street Trees project (marked in red on the map below). 19 of the trees were replacement trees for trees felled between 2008 and 2012, which Streets Ahead were obligated to replace, but had forgotten to, until some successful sleuthing by NESST Committee members (shown in purple on the map). Finally, 37 trees, costing £17,500, were funded through a combination of means, including individuals,

...DGE NEWS

what is to be done ?

groups of residents on specific roads, a Crowdfunding scheme, and NESST itself. These are shown in green on the map.

Interestingly, 25 of the 80 new trees were chosen by NESST to be Dutch Elm Disease resistant elm trees. This takes the street tree population of this species to a total of 47 in our area, up from just 4 in 2016, and creates significant future habitat expansion potential for the population of White Letter Hairstreak butterflies living on the famous Chelsea Road elm tree.

But NESST isn't resting on its laurels, and we're confident of having an even more successful 2022. We've got much more street trees planned, and if you want to contribute to the crowdfunding, you can visit: <https://gofund.me/82a7152b>

Also, over the festive period we mapped over 300 green or brownfield spaces in our area. The aim is to try to improve the wildlife potential of some of them, working with the landowners.

We've also just launched a House Sparrow initiative. We are systematically mapping all the existing House Sparrow colonies in the NESST geographic area during April and May. Once we have this information, we'll then be targeting areas with vulnerable colonies for conservation efforts, specifically nest boxes, hedge planting, and wildflower meadow planting. Look out for more detail in future months for how you can contribute.

Similarly, we are looking to help the local Swift population too, leading the S7 Swift initiative, learning from the success of the sister S11 Swift conservation group.

All our initiatives, details of our monthly talks, and how you can become a member for free and receive our weekly short newsletter, can be found on our website here: <http://www.nesstsheffield.org/>



Ken Lambert (NENG Chair)

Sadly, "DGE NEWS" is all that remains on the frontage of what was once the local newsagent's shop – Nether Edge News to give it the full title. As you can see from this photo, it is now a dilapidated, graffiti infested wreck that does little to enhance the ambience of the area.

For almost a year NENG has been trying to persuade Sainsbury's either to tidy up the frontage or let NENG do it.

To date we have spoken to local management, emailed their regional property manager, written to Sainsbury's CEO and Company Secretary and posted items on Facebook but to no avail. We have also enlisted support from local councillors and Paul Blomfield MP, who has also written to them. Sainsbury's insist it is out of their hands, because they don't hold the lease, but our understanding is that they own the freehold to the site, which includes their local supermarket, a garage business plus the old Newsagent and the flat over it. We also know that the man who used to have the lease and still lives in the flat over the shop relinquished the lease for the shop, but not his flat (on which he continues to pay rent) about 5 years ago.

The evidence suggests to us that Sainsbury's or their agents do control the ground floor premises that formed the newsagent. We consider that it is therefore their responsibility to tidy up the derelict appearance of the premises, which have been an eye-sore in the centre of our community for the past 5 years, and which also detracts from the appearance of their own local store. We do not wish to use or even enter the old shop unit (which is in a very poor state of repair and possibly unsafe), but simply to tidy up the visible, graffiti-strewn frontage to Machon Bank Road by giving it a coat of paint. We think it is not only in Sainsbury's own commercial interest to do this, but also part of their much publicised corporate social responsibility to the community they serve.

The latest from Sainsbury's head office is that NENG should contact the lease holder to ask for permission, but will not disclose who the lease holder as it is commercial in confidence – Franz Kafka eat your heart out.

However, we continue to engage with Sainsbury's, so it is possible that a solution will have been found by the time you read this. Make a beeline for the NENG stall at the Farmers Market on 13th March to find out the latest position.

THE ROTARY CLUB OF SHEFFIELD VULCAN



Alan Brown

Despite Covid limitations, the Rotary Club of Sheffield Vulcan has continued to thrive.

We have supported Food Banks by providing volunteer drivers to reach the housebound, distributing food supplies, and facilitated cash grants of £9,000.

Our local community work is varied; last year for example we acted as stewards at Whirlow Hall Farm for their Superhero Fun Day, and at Meadowhall for a Musical Drive-in in aid of the Roundabout charity (helping homeless teenagers). Further stewarding manpower was given to the Sheffield 10K Run for All.

We annually financially support a pantomime visit for a local school, have collected usable clothes for asylum seekers in need, and held bucket collections in support of local causes. In 2021, we raised over £15,000 for over 40 (mainly local) charities.

We seek to improve and enrich our environment in Sheffield – over the past 10 years, we have planted many thousands of young trees and spring bulbs. As part of that aim we have “adopted” Beauchief Gardens, near to the Abbeydale Industrial Hamlet. During the Autumn, we trimmed a large number of bushes, and carried general maintenance. We also continued planting crocus and daffodil bulbs, so look out this Spring for a wealth of early colour. Although this is now the quiet season, we have not stopped planning for this coming year. The contractors working on the Hope Valley railway line improvements have offered to help improve the Gardens, and jointly with the Manager from Sheffield City Council (the Gardens’ owners), we have been planning possible schemes to improve the structure of the Gardens by reducing the height of many of the older trees, reduce the Winter flooding risk in the low-lying parts, and upgrade the flower beds; we await a decision by the contractors on how they can help. The Gardens are open all year round, and everyone is welcome.

Rotary International spent \$3.1 million in disaster relief in 2021 and is recognised as the major driving force over the years to end the scourge of Polio, which is now almost eliminated.

Thus Rotary is not solely a local affair – world-wide there are more than one million members in fifty thousand clubs. This network allows clubs to work in harmony together, an example being Sheffield Vulcan’s donation of £925 to Rotary Club in India for the provision of Personal Protection Equipment in the fight against Covid in a poor rural area.

But we’re not just about helping those less fortunate than ourselves and improving the world around us; we meet (Covid permitting) in person and via Zoom to make friends, enjoy fun events, dine together with informative and inspirational figures, go walking and many other sociable events.

So, if you have a bit of spare time, like the idea of joining a group of people who, like you, want to put something back into the local and world-wide community, why not contact us via contactus@sheffieldvulcan.org.uk or look at our website www.vulcanrotary.org.uk



Bannerdale Osteopaths

“Really very good for my injury. Perfect recovery program and it works for me. Pooja is a wealth of knowledge and really pinpoints the areas that need work during each visit to help me to regain fitness.”

James, Happy Patient, 2021



Bannerdale Osteopaths, 5 Machon Bank Road
Nether Edge, Sheffield, S7 1PE

0114 419 0173 | www.bannerdaleosteopaths.com

Mums United

Ruth Bernard



Mums United is a charity led by mothers in Sharrow, Nether Edge and Meersbrook tackling youth violence and child drug exploitation. The group was founded by Sahira Irshad, trustee and chair, in 2018, with the aim of raising awareness of rising violence and drug exploitation among young people. They receive some financial support from Sheffield City Council, the National Lottery, the South Yorkshire Foundation, but have to work hard to find other sources of funding.

Mums United deliver interactive workshops in schools and community centres focusing on preventing youth violence. They provide support and mentoring for young people having problems at school, organise football and boxing sessions, and a

variety of other activities including workshops enabling young people to express themselves through writing. There are also discussion workshops for both mothers and fathers who are worried that their children are becoming involved in criminal activity. Another project is the Mums United Charitable Bank providing food, clothing and toys to the homeless and vulnerable families, including Afghan refugees.

I first heard of Mums United when listening to Woman's Hour (Radio 4), when Sahira



was interviewed by Emma Barnett. I gradually began to realise that the woman being interviewed lived in Nether Edge. I felt I had to learn more, as she sounded a formidable and extraordinary woman. I visited Meersbrook Pavilion on a very wet and miserable Sunday to meet Sahira, when the Mums United Sheffield Youth Club was in progress. There was a young man teaching boxing to a diverse group of children, from a young girl to a teenage boy. Their mothers were in another room, with a project worker from Sheffield City Council, discussing ways to protect their children from online abuse

In May 2021 Mums United held a protest against the gangs who operate in Nether Edge & Sharrow, and over 100 people came out to voice concerns about gun and crime violence in Sheffield. The protest was widely reported in local print media and BBC Look North.

Earlier this year, the charity received the Prime Ministers Point of Light award for its work. The Points of Light award recognises outstanding individual volunteers who are making a change in their community. The award recognised that 'Mums United' provides a vital safe space for young people where they can learn about knife and gun prevention and start to make positive changes in their lives'.

Mums United was also shortlisted for the National Diversity Awards in 2021, run in association with ITV, which celebrates grass roots communities and activists.

In the future, Sahira would like to raise the profile of Mums United and would love to be able to run all the various activities in their own premises.

If you would like to donate to Mums United, please go to their webpage: <https://www.mums-united.com/>



Chelsea Park



David Pierce

I went to look at the changes that have been made to Chelsea Park playground described in the February edition of EDGE. For years it has not been a safe and attractive place for children to play on. Worn, unattractive equipment, and dangerous surfaces were not appealing to parents or grandparents for their offspring to enjoy. Now though the muddy and slippery surfaces have gone. There are no potholes to cause accidents and the whole area is a delight to see. The equipment is bright and colourful and the new surfaces are an amazing improvement on the bumpy, wet, and dangerous so-called playground. It will now be a safe and enjoyable place to play in all the year round, winter and summer.

Our thanks should go to Helen and Howard alongside others who made contributions as well as Amey, and Bob at Sheffield Council

Chelsea Park Playground 2022

When David and I visited the Playground at Chelsea Park, we were



It was a pleasure to see the new equipment and the new surfaces. The playground is now a safe and attractive place for children to play on. The equipment is bright and colourful and the new surfaces are an amazing improvement on the bumpy, wet, and dangerous so-called playground. It will now be a safe and enjoyable place to play in all the year round, winter and summer.

Can we/Should we try to do something about Local Traffic ?

Howard Fry's article in the February edition of EDGE generated quite a lot of comment:

Peter Vaughan

Howard Fry asks whether NENG should participate with SCC on the possible introduction of an Active / Low Traffic Neighbourhood in the Brincliffe area. There can be no doubt that the levels of car ownership and levels of traffic in Nether Edge are blighting the area, for which those of us who are motorists are responsible. The problems this cause are well known. Whilst I don't think that an Active / Low Traffic scheme would address the fundamental problems, I think if done well it could ease some of the symptoms. What we wouldn't want is to find that we had simply moved the problem from one street to another and introduced a lot of simplistic calming measures, such as speed bumps. I therefore fully support NENG engaging with SCC to ensure that any scheme is as good as we can get. I think that there are other related initiatives that NENG could usefully take up on our behalf, such as :

- exploring whether there would be interest in a local car club, lift sharing etc
- encouraging "walking school buses"
- putting pressure on SCC to improve the deplorable state of many of our footpaths
- exploring whether Nether Edge Road between Oxfam and Glen Road could be largely pedestrianised to create a village square

There are also things that we motorists can do straightaway for ourselves, such as combining car trips and shopping locally, on foot of course !

Another reader wrote in with the suggestion that Archer Lane should be made one-way : "down-hill in the morning and up-hill in the evening. The majority of the traffic problem is commuters avoiding Abbeydale Rd. A camera and fines would soon sort them out."

David and Rose Woodhill

Thank you to Howard Fry for raising this issue. We should definitely try to do something about the traffic. The traffic on Brincliffe Edge Rd has increased in the last few years. It has become more of a problem lately as shops and offices at Bannercross are using Brincliffe Edge Rd and Bannerdale Rd as a car park. The junction of Brincliffe Edge Rd and Bannerdale Rd is particularly dangerous because of the poor visibility due to the parking.

We need to develop a comprehensive traffic calming scheme for the whole of Nether Edge and not just for a few roads. We should like to see a 20 mile per hour speed limit for the whole of Nether Edge. This has been implemented in Bents Green.

Marion Gerson

I completely agree with Howard Fry that roads and pavements should be made as pollution-free and as safe as possible, especially for the more vulnerable. Can we make a start with Sheldon Road, as it would have a knock-on effect on many of the others. Because of its position as a funnel, it carries more traffic than any others in Nether Edge, apart from Abbeydale Road. In addition, quite a high proportion is diesel-powered, including taxis, vans, trucks and lorries. This is a residential road with large numbers of people living in the houses that crowd close to the traffic and pollution, and with narrow pavements that are in a dangerous and discriminatory state.

This is likely to get worse when the clean air zone is introduced for the centre of Sheffield, as even more drivers will try to avoid the inner ring road. Already we've seen an increase in traffic when traffic-calming measures were installed on the Bannerdale roads, and this may have led to more traffic



on the Brincliffe Edge/Nether Edge Road cut-through too.

Last month I nearly had an accident that I have been expecting - and dreading - all the time I have lived in my flat on Sheldon Road; when there are vans and cars parked on either side of our entrance there is often no way I can see vehicles approaching in either direction, so have to inch out blind until the nose of my car is across both lanes of traffic before I can see. A car coming down the road had slowed and was clearly intending to stop to let me out, but meanwhile a van came shooting round the downhill corner and sped past, mounting the pavement to do so. Fortunately for us both, there are no tree trunks directly opposite but it was a very close shave. And it's going to happen again to someone, if not to me.

A 20mph speed limit, with camera enforcement, would help some of these issues without affecting the emergency response vehicles that use our road and I believe this should become standard throughout Nether Edge. And decent pavements would make it possible for wheelchairs to get along and for people to walk in safety too.

Sarah Tew

I just received my latest copy of the Nether Edge newsletter and was delighted to read the piece about the Brincliffe Edge Road traffic proposals, (on page 11).

We live on Brincliffe Edge Road, between Nether Edge Road and Archer Lane, and we can confirm that we witness traffic problems on a daily occurrence, which has escalated since the opening of the Mercia School. Our day is usually interrupted with sounds of horns, and drivers shouting at each other. Thankfully it only happens for about 2hrs in a week day, but it can vary during the weekends.

The amount of traffic has affected how we live, as we no longer park outside our house. The decision to move our car happened 3 years ago when someone hit and run into our new car, and due to the extensive damage, it was almost a write-off.

I have contacted the council numerous of times but to no avail. They are either not interested, (due to a lack of funding), or in the case of the council, they do not believe the traffic is that bad. I have contacted Paul Blomfield but he told me that there isn't any funding available, and I also contacted Alison Teal and she contacted the council on my behalf.

Speaking with our neighbours, they all agree that something needs to be done to address the high amount of traffic that use our road as a cut-through. Historically the stretch of road where we live, was a one-way road, (in the downward direction), but I do not know when it was changed, (or why).

We think there are a number of ways to address the traffic in our neighbourhood,



and have noticed only this week what a reduction in traffic there has been due to the temporary traffic lights on Archer Lane. Our suggestions are as follows:

- Single lane traffic on Brincliffe Edge Rd between Nether Edge Rd and Archer Lane, with parking on the housing side for residents. At the same time, make Ashland Road one-way, so that the problem wasn't just moved on.
- Make Archer Lane a single lane road, (between Edgedale Rd and Sandford Grove Rd).
- Traffic lights on part of Archer Lane
- Introduction of a partial closure of Nether Edge Rd, between Cafe #9 and the Oxfam. This was presented as a sketch in a previous copy of the NENG newsletter and could help alleviate numerous issues in the Nether Edge Neighbourhood.
- Introduction of 'Stops signs' to the top of Nether Edge Rd and Archer Lane
- 'Give Way / Priority direction' signs to Brincliffe Edge Rd
- Introduce a safe crossing point between the entrance of Brincliffe Edge Woods to Nether Edge Rd. This is a very busy route used for school children, and visibility is limited and dangerous especially during peak times of travel, and more recently, during Sheffield's Circular Run.
- Generally, there is a need for additional 20mph signs posts and road graphics.

Any other suggestions would be welcome.

Editor: Councillor Maroof Raouf was a guest at the NENG Committee January meeting specifically to talk about traffic issues. He said that having evidence would make it easier to present a case. If you would like to do that, please contact him at maroof.raouf@councillor.sheffield.gov.uk

NETHER EDGE NEIGHBOURHOOD GROUP AGM

Company limited by guarantee no. 741080, registered charity no. 1130239

NOTICE OF ANNUAL GENERAL MEETING

To be held on
Wednesday 30th March via Zoom at 7pm

AGENDA

7.00pm Welcome, introduction and conduct of the virtual meeting

7.10pm Business, including:-

Minutes of the last AGM held on 24th February 2020

@ <http://www.netheredge.org.uk/neighbourhood-group/agm/>

Chair's Report

Reports by sub Groups (see reports in this edition):-

- Farmers Market
- Festival
- History Group
- EDGE Editorial Board
- Friends of Brincliffe Edge Wood
- Kenwood Community Growers (see report in February EDGE)
- Friends of Chelsea Park (see report in February EDGE)
- Open Gardens
- Art Group

Election of officers*

**Nominations for Officers (Chair, Vice-Chair, Secretary and Treasurer) should be sent to Howard Fry, NENG Secretary at howard.fry@icloud.com All nominations must include the names of a proposer and seconder and be accompanied by the nominee's declaration of their willingness to serve.*

How to attend the AGM

In order to attend the AGM, you will need to register in order to obtain the Zoom meeting ID and password. To do this, email your name(s) and address to ken.lambert227@gmail.com and a few days before the meeting we will send you instructions on how to log in to the meeting.

Regarding membership of NENG, in your email, please confirm that you are a member of NENG so that our records can be checked and updated where necessary.

If more than one member in a household wish to participate in the meeting, please give all the names.

We will encourage participation and questions from members after each of the reports.

Chair's report

Ken Lambert

It has been another challenging year, with various lockdowns and seemingly ever changing and sometimes confusing rules on what we could and could not do. After having to produce several editions of EDGE as electronic only versions, we have finally managed to revert to producing and delivering paper and electronic copies (you can have both if you want – just ask me).

Sub groups. The activities of all the sub groups and their plans for the future are set out in separate reports, which I commend to you. Sadly, and as reported in the February edition of EDGE, the wonderful Kenwood Community Growers have lost their plot in the grounds of the Kenwood Hotel, and as I write, as looking for somewhere new. The Farmers Market has again proved very popular as were the host of activities put on during the Festival – I have never seen so many people at the Party in the Park.

NENG Committee. The Committee continued to meet via Zoom during 2021, but we had a face to face meeting for the first time in January this year at the King's Centre. The novelty of actually getting together made for a very lively meeting, as I struggled to keep control. Since last year we welcome three new members onto the Committee – Kevin Bonnet, Vicky Phillips, who is the new Chair of the Festival Committee, and Stephen Houfe, who has transformed the appearance of EDGE with his amazing design skills. New members are always very welcome to join the committee and if you would like to be the Treasurer, we will bite your hand off. Howard and I are both available to have a chat if you want to know about what being a committee member entails.

Thanks. Forgive me if I forget anybody or any group. So many people willingly give their time and expertise to keep the show on the road. The NENG committee continues to provide me with support, especially our indefatigable secretary Howard, the stalwarts of the EDGE Editorial Board (Nicky, David, Ruth, Kevin and now Stephen) and Doc, our always acting Treasurer. The sub group organisers and all the volunteers play a major role. Many thanks indeed to the distributors of EDGE, in both paper and virtual form; we had several vacancies during the year and I was overwhelmed with the responses of people who wanted to help. I must also mention the stalwarts who risk life and limb putting up the Xmas trees at the Nether Edge crossroads. Every single one of you helps to make Nether Edge such a wonderful place to be.



Nether Edge Farmers' Market Report

It's great to have the markets back again. They are a small but significant contribution to what makes Nether Edge feel like a community and not just a collection of residential streets. The first post-Covid one we held in September 2020 was welcomed by so many people desperate to do something normal and to meet with other people again. The second wave prevented us from holding the 2020 Christmas market. But we've been going strong since then.

All our markets have been changed as a result of Covid. Our planning for that first one involved much thought and discussion and included a considerable amount of consultation with the city's Public Health Department to make it as safe as possible. The main difference that you will notice is the layout. No longer are there stalls along both sides of Glen Road while on Nether Edge Road there are also fewer stalls. And stalls that we expect will generate queues are sited so that they won't interfere with

the movement of people, although we don't always get that right!

These changes are great for our visitors, who are no longer crammed together down Glen Road. And it's great for the traders as their customers can get to see what's on the stall much more easily. Perhaps as a result they've been doing a roaring trade at all our recent markets and in December I had people telling me that it was the best market ever. In the summer we had cake stalls that ran out of cakes, went back to make more, and ran out again!

There are downsides however. One is that the market no longer gets the same income to give to local charities. Over the years the market has contributed well over £80,000 to charities for children, the homeless, for mental and physical health, women's support groups and more; the proceeds from the market on Sunday March 13th will go to the Nether Edge and Sharrow Food Bank, which largely

provides halal-appropriate support in our local Muslim community.

The main downside is that we are sadly having to turn lots of small traders away; for the Christmas market we had over 100 applications for 54 spaces. We know, because they tell us, how desperate people sometimes are to be able to sell their wares after such difficult times. We are experimenting with offering people, especially new applicants, the opportunity to 'buddy up' and share a stall in order to increase the number of opportunities. So far this seems to have worked quite well – or, if it hasn't, we haven't heard about it!

Thank you to everyone who comes to the markets and supports our local small businesses and traders, including our local farmers with their variety of produce. In the end it's you, the visitors, who make it possible and worthwhile. See you in March!

Marion Gerson Contact:
nengfarmersmarket@gmail.com

Nether Edge Festival

The Nether Edge Festival was back in full swing in September 2021, our 7th annual festival. After the necessarily shortened 'pop-up' festival of 2020, the Festival Committee were delighted to present a full programme in 2021, with around 35 events held over the nine days.

We saw the return of old favourites like the Croquet and Cream Tea and Lottie's Urban Beach Party. Some events born of necessity in 2020 returned and look set to become fixtures in the festival calendar. The scarecrow trail had a monster theme, with 19 fabulous monsters lurking around Nether Edge. Another wonderful series of concerts was held at St. Andrews Psalter Lane Church, and this year welcomed audiences in person as well as online. We had a new venue for the Young Artists Exhibition, in the Fly Tower at Abbeydale Picture House. A great new event, the Folk Night in the Cemetery, was held at the Samuel Worth Chapel. Throughout the festival there were workshops, film screenings, trails, walks and talks too numerous to list here, which, we hope, provided something for everyone.

The festival began and ended with our two big community events – the Carnival at Common Ground, and the Picnic in the Park. The Carnival was jam-packed with inflatables, and Ammi's Kitchen supplied delicious food. The Picnic in the Park was a wonderful end to the week, with lots of fun, music, and people enjoying themselves in the sunshine.

None of this would be possible without the hard work and support of many people. Huge thanks go to the members of the Festival

Committee for organising the festival and all that that involves. To all the volunteers who helped with everything from distributing programmes, to setting up and stewarding events. To King Ecgbert School staff and pupils for their support at the Picnic in the Park. To all the event organisers, the venues, and the local businesses who support us and who have donated prizes for the raffle. And to Rosalind Watchorn Solicitors and Bannerdale Osteopaths for their kind donations, and to Sheffield City Council and (of course) NENG.

We would like to give special thanks to Richard and Mark for leading the festival through the last four years. Although they have stepped down as co-chairs, happily they both remain part of the committee and will continue to share their expertise and enthusiasm with us all. Planning for the 2022 festival is now underway. If you would like to participate, whether as a member of the planning group, a volunteer during the festival or if you have an idea for an event, please do get in touch.

Vicky Phillips www.netheredgefestival.co.uk
netheredgefestival@gmail.com



History Group Report



The History Group remains in rude good health despite the challenges of the times and continues, in our view, to contribute significantly and positively to the image and reputation of NENG.

In the last year, despite the ravages of Covid, we organised a number of activities including on-line and paper-based self-guided walks both of which proved very popular especially with stir crazy families. Two sessions of Carols in The Union also proved successful particularly in attracting young first timers including Canadians, Mexicans, Americans and Germans, temporarily living in Sheffield. We published and successfully sold a 'Green Nether Edge' Calendar for 2022 which generated around £600 over and above the cost of production. As further part of our commitment to the community we have donated made up packs of all our publications to six local Care Homes with others in prospect. We also installed the first of a number of planned History Boards on Meadow Bank Avenue. We continue to advertise our presence through our steadily developing website and we also took a stand at the City wide Heritage Fair in January, raising our profile and that of NENG as well as generating more sales of our publications. As things stand we have over 100 contacts on our circulation list, many of which are couples. This list allows us to keep 'subscribers' up to date with our activities and plans. Registration on the list is free as is membership of the Group.

Our finances are such that we are able to do all this without any call on NENG finances. Indeed we continue to be a net contributor to NENG. Over the last year we spent around £1,277 and generated around £2,430 in revenue from sale of publications.

Our ambitions for the coming year, again subject to Covid, are to resurrect our public activities...walks, talks, and regular meetings in The Union. Watch out, in this respect, for details of a talk on Robert Marnock the landscape gardener who designed the Botanical Gardens and who left his thumb print on various sites in Nether Edge. We are also keen to continue our record of producing a significant publication each calendar year and discussions are underway about what this might be.

If you want to be part of all this, whatever your experience, expertise or ability to commit please get in touch.

Jubilee

Do you remember the 1977 Silver Jubilee? Did you celebrate it in Nether Edge?

The History Group is thinking of publishing a book to mark this June's Platinum Jubilee. Not just to report on how we celebrated those Jubilees, but also to explore the many ways in which life in Nether Edge has changed since 1952.

We're still in the early planning stages, but we'd love you to get involved.

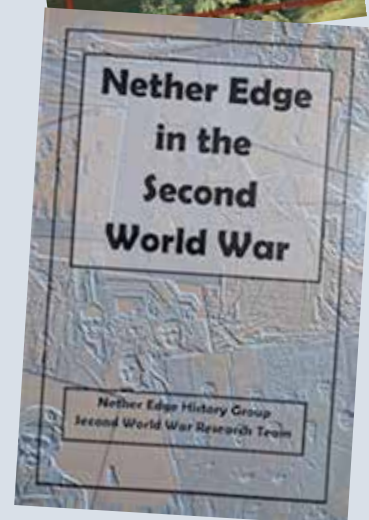
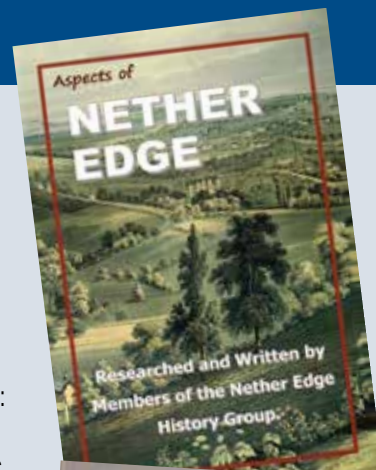
There are many topics that need researching and writing about, but most of all we want your memories - whether you've lived here for all of that period or (like most people) just some of it. For example:

- Shopping and shopkeeping, schools, transport, housing, leisure and entertainment, pubs and clubs, social events, political parties and elections, campaigns, population change: who were Nether Edgers then, and who are they now? Etc etc.
- How did we celebrate the 1977 Jubilee, and how will we celebrate this year's
- Do you have photographs of significant events, people, or disappeared landmarks (Turn-Ups, the Brincs, that little petrol station outside the Stag...)

Are you interested in getting involved? – researching, writing, sharing your memories – editing, production, artwork, marketing etc?

If so, get in touch:


contact@netheredgehistory.org.uk



Pets at Rest vet home visits

 [pets at rest veterinary care](#)

 www.petsatrestvet.com

 07866243673

 petsatrestvet@gmail.com

final farewells in familiar places



Nether Edge Art Club Report

Art club has continued to meet most Tuesday afternoons throughout the year. In the summer we have met socially distanced in member's gardens. We are pleased to say the membership has now increased to 20 and in the winter months we are now getting an average of 12 people attending the Bowling Club each week. We all agree that we are so lucky to have such a great venue for painting.

- We now have many distinguished local artists as members and they are helping to provide a vibrant atmosphere to our classes.
- There have been a number of evening meetings at member's houses mainly to accommodate the members who are daytime working.
- Membership at the moment is pretty full but if people want to join us we are considering running a class on a Thursday evening.
- The members have exhibited their work at various events including the Art Trail at the Festival and the Christmas Fair at the Kenwood Hotel
- All the members were involved in the massive auction of the Kenwood Frames and we were pleased to have raised nearly £2500 from all our events.
- This year we have painted a collective artwork of the Grand Entrance to the General Cemetery. This is soon to go on display locally and cards of the artwork will be available for sale.
- Plans for the future include an exhibition of our work at the June Farmers market plus many trips to Art festivals and exhibitions. We intend to meet outside most of the summer either sketching in Derbyshire or at other local venues.

We all agree that Art is a great pastime and Communal Art is even better.

Contact richardtaylor635@hotmail.com

Friends of Brincliffe Edge Wood (FoBEW)



While it is easy to sketch out the aims of the group it might be useful to give the fuller picture through our work in 2021. We got through a wobbly year by sticking to the Covid rules and advice from Parks & Countryside that went out to all "Friends of..." groups working across Sheffield. The fact that the Volunteers turned out in 2021 to continue the work programme is very much appreciated by FoBEW and by the many Wood users who have been generous with their comments about our work. Thank You Everyone !

Apart from the ongoing maintenance which is the core of our activity (litter picking, clearing paths and steps, trimming overgrown branches) we included more of the "dead hedging" which is starting to become a feature of the Wood. Here, stout recycled posts are hammered into the ground and long flexible cuttings are woven between the posts helping to discourage those who take short cuts that wear and damage path edges.

The need to repair steps and revetments is ongoing but is dependent on the availability of suitable timber. From cuttings and trimmings we form "habitat piles" where the unwanted growth is cleared to the side, rots down and makes homes for small woodland creatures.

Ash dieback, a disease affecting ash trees across the UK, is now present in Brincliffe Edge Wood and, in the autumn, we saw the sad felling of the worst affected of our ash trees. As a start to compensate for the loss of the ash we planted 50 Buckthorn whips in December and hope, eventually, to attract the Brimstone butterfly for which the Buckthorn is a food source (see article in the February EDGE). We had help with the planting from members of Nether Edge and Sharrow Sustainable Transformation so our work with like-minded groups from the Sheffield Green Spaces Forum continues.

We meet about once a month and follow a programme of activity from 09.30 to 12.00. The work mornings are usually on a Wednesday or a Thursday and are Sheffield City Council Ranger led. We welcome comments and ideas from our Volunteers about the running of Wood maintenance activities.

Ken Phillip & Claire Bygate

Contact phillipk@vip.solis.co.uk

Nether Edge Open Gardens Report



Open Gardens will be back to delight the senses on Sunday 19th June, which is a week after the Farmers' Market.

We have yet to agree exact times, but it will probably be from 12 noon till about 4pm, maybe 5. Last year 14 local gardeners invited folk to come and have a look round and a bit of a sniff, but we hope there will be even more this year. Of course, having so many gardens open to the public in the course of a single afternoon means that you'd need to be pretty nifty on your roller skates to get round them all. But that's not really the point. We regard them as social occasions in large part, and you are allowed to be selective, focusing on a couple of gardens that take your fancy or doing a supermarket dash if you want to see everything, so long as you've got a few quid to drop into each charity box (we don't do plastic).

There are no rules for opening your garden, provided it is reasonably safe and you warn people in advance of any hazards to life and limb. You also get to choose which charity you want to support, which is gratifying, as we jointly raised nearly £2,500, and visitors are usually very generous. If in any doubt, just ask.

Quite a few gardens offer teas and cakes, but you don't have to and while it is gratifying

to hear people say nice things about your garden, it is even more pleasing when visitors take a genuine - even critical interest in what you are growing. One such guest warned me last year that my acanthus would turn into a thug (she was right about that) and that it looked as if my raspberries needed a bit more magnesium sulphate. She was right about that too. Though for most of the time, gardening is a relatively

solitary activity, ruled by bouts of weeding, dead-heading and wondering where to get water from when drought looks imminent, it all becomes worth-while when the joy can be shared. A particular advantage of 'opening up' is that it gives you a bit of incentive to tidy up in June, so you can cruise along and enjoy your own garden much more than you might otherwise do in July, even August.

At the time of writing, it is wet and cold outside, but winter has been unusually mild so far, allowing one to get outside and move a few plants around. Dig a pond maybe? No matter how un-smart your garden may look just now, we would warmly welcome new 'open gardeners' to think about showing off their garden projects with us. Posh gardens are a delight and we are lucky enough to have a few of them in Nether Edge, but we would also like to include the keen amateurs with less spectacular projects - maybe just a front garden on which you have lavished love and care. It always amazes how quickly gardens leap into life in early spring, so please, please drop us a line if you fancy joining us with a bit of showing-off this June.

If you want to join in Open Gardens 2022 whether you are a regular, or just wondering if it is right for you, please drop us a line, so we can start assembling publicity for June.

Howard Fry (howard.fry@icloud.com)

Peter Machan (petermachan@hotmail.com)



GROUP REPORTS



EDGE Editorial Board Report

The EDGE Editorial Board has been established for over three years and the board members are: Ruth Bernard, Nicky Erlen, David Pierce, Kevin Hickey, and our newest member Stephen Houfe, who is responsible for the design and artwork of EDGE. We try to meet every six weeks and report back to the NENG committee.

Our aims:

- To ensure the EDGE is produced and delivered ten months of the year and on time.
- Provide support and guidance for EDGE editors.
- Ensure nothing appears that is unlawful or inconsistent with the aims of NENG.
- To oversee the quality of content and ensure that EDGE is an entertaining and useful publication, pertinent to Nether Edge issues and people, with as diverse a content as possible.
- To be responsive to local views and comments and report back on new initiatives and developments and share stories.

There are regular editors including, The Chair, History Group, Festival Group, Open Gardens, members of the committee and the editorial board as and when required.

The last year has seen some challenges due to the pandemic and we were able to provide only electronic copies in February, March,

and April. It was not considered safe for our distributors to deliver EDGE in person. It did also allow the editors a little more freedom with the number of pages as there was no additional cost with electronic copies. Feedback from our readership suggest that they do prefer hard copy. The What's on listings re-appeared in the July/August edition which reflects the local situation. The guidelines for editors have been updated and provide a clear set of procedures and requirements when editing the EDGE.

The subscription has been increased to £10 per year and the printing costs have been reduced. Also, Stephen Houfe, our new member to the board, provides all the design and artwork for each edition of EDGE, which has greatly reduced costs.

There has been a very diverse range of subjects and stories that have appeared in EDGE over the year. They include artists profiles and their work, gardens and plants, environmental issues, wildlife, road safety, pedestrianizing Nether Edge, performers, walks, writers and authors, and celebratory events which have brought the community together.

Advertising

EDGE has four regular advertisers- Sheffield Sustainable Kitchens, Bannerdale Osteopaths, Pets at Rest and Kenwood Hotel, plus other local businesses that advertise occasionally.

From February - April we only published an online version because of lockdown when we didn't run any adverts, apart from the Osteopaths. EDGE do not charge charities for advertising and in 2021 we carried 1 free advert for the Nether Edge Club Macmillan Cancer coffee morning, 1 for the Nether Edge Carol Singers, and five for the Online Nether Edge Fair.

Revenue from advertising in 2021: £1246
Cost of Printing EDGE in 2021: £4876.00

New initiatives

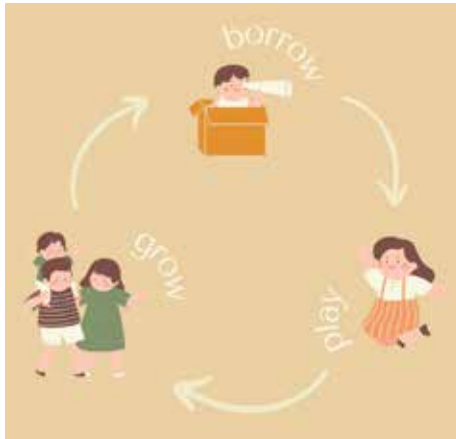
New initiatives and developments for the future:-

- Produce and distribute a welcome pack for new neighbours to Nether Edge which informs them about NENG and encourages them to subscribe to the EDGE
- Seek to engage with a broader range of the community
- Increase the number of regular editors of the EDGE
- Increase the number of subscriptions to EDGE

We do thank all our contributors and editors over the last year for all their hard work and support, it is much appreciated. Also, the reliable hard-working team of distributors who ensure all subscribers receive their copy of their EDGE for ten months of the year.

Kevin Hickey (k.hickey10@icloud.com)

Borrow and Nest Plastic-free Toy Rental



Founder Kate is keen to fill her baby's day with fun and play but is conscious of the impact that a constantly updated toy basket has on her purse, her home and on the planet. So, she created Borrow and Nest, a sustainable solution to playrooms full of unloved toys. The subscription enables families to borrow and swap from a curated collection of beautiful wooden toys by award-winning designers like MinMin Copenhagen and Wee Gallery, without contributing to plastic-waste.

We've seen how quickly children can accumulate, and then lose interest in, baskets full of toys. With children, parents, and the planet in mind, Borrow and Nest toy rental keeps homes full of play and free of clutter. Borrowing instead of buying new encourages a circular economy, reduces plastic consumption, extends the toy's lifecycle, and reduces the number of unwanted toys ending up in landfill. Borrow and Nest hope to normalise second-hand toys by teaching children about the importance of sharing and a sustainable culture. Their toys are pre-loved but create brand new memories wherever they go.

Subscribers have the freedom to choose which two toys they'd like to borrow at a time, and for how long. Toys are thoroughly inspected and cleaned in-between customers before being delivered in plastic-free packaging. Based in Nether Edge, Borrow and Nest deliver nationwide and offer free drop offs and collections for customers local to S7. They also sell gift cards, perfect for new parents and special occasions!

info@borrowandnest.co.uk

www.borrowandnest.co.uk

[@borrowandnest](https://www.instagram.com/borrowandnest)

www.facebook.com/borrowandnest



NETHER EDGE CLUB

2 MONCRIEFFE ROAD, NETHER EDGE S7 1HR

A WARM WELCOME AWAITS

COME AND SEE OUR FACILITIES:

- LOUNGE BAR
- GAMES ROOM
- SNOOKER AND POOL TABLE
- FUNCTION ROOM FOR HIRE
- OUTSIDE SEATING AREA



WWW.NETHEREDGECLUB.CO.UK • EMAIL: ENQUIRIES@NETHEREDGECLUB.CO.UK • TEL NO. 0114 255 0675

Mountain Hares of Sheffield

David Levine

Sheffield is the only city in England that has mountain hares (albeit because about one third of the city is in the Peak District, the only National Park in England to have mountain hares). The Peak District mountain hare (*Lepus timidus scoticus*) is one of 2 sub species of mountain hares in the UK. The other sub species is the Irish mountain hare (*Lepus timidus hibernicus*).

The mountain hare is a different species from the common brown hare (*Lepus europaeus*) and is our only true native hare. The brown hare which arrived with the Romans, is reddish brown all year with black on the tip of the tail and has longer ears than the mountain hare. In contrast, the mountain hare is native to the Scottish Highlands and is adapted to cold conditions living at over 400m. It is brownish grey in summer with white on tip of the tail, all white in winter and has ears the same length as its head.

In the 1870's, a small founder population of 70 to 120 mountain hares was translocated to the Peak District for shooting purposes with 50% immediate loss. There are now a few thousand in the Peak District, though counting them is difficult as they are timid and nocturnal. They were also introduced to other UK moorland areas but had died out by the 1970's. There is a very small population on the Isle of Man which was introduced in the 1950's.

LIFE OF THE MOUNTAIN HARE

In Winter, the mountain hare feeds on young heather (*calluna vulgaris*) and in Summer they eat mainly grasses. The hare is one of the few mammals that practices caecotrophy. It digests its food twice by eating its own faeces (specially produced soft faecal pellets).

Mountain hares live in forms (depressions in the ground) or heather tunnels on heather moorland at above 400m (unlike the rabbit it does not burrow).

Females are pregnant from February to July or August. With 2 to 3 litters per

year and a gestation of 50 days they average 4 to 6 leverets per year. There is some evidence that hares (all species) can ovulate in late pregnancy. If fertile mating does occur before birth (called superfoetation) then this would be unique for mammals and indicative of the hare's "fast lifestyle" - with a life span of 3 to 4 years they pack a lot in.

THREATS TO THE MOUNTAIN HARE

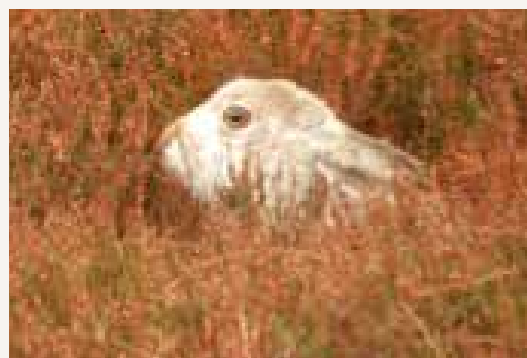
The mountain hare needs a cold snowy environment and the biggest threat to the population in the Peak District is climate change. As winter temperatures rise the population will move to higher elevations, leaving the borders of Sheffield (maximum altitude of 550m), to a smaller area on Kinderscout and Bleaklow (above 600m high).

The main predators are foxes, buzzards (which take leverets), and golden eagles (which can take adults) in Scotland

The mountain hare is a priority species for conservation action under the UK Biodiversity Action Plan. However, though hare coursing (hunting with dogs) is illegal, it is legal in England to shoot hares (both species) for sport. In addition, around 100 mountain hares a year are killed on the roads running through their habitat in the Peak District. Mountain hares have also been targeted by gamekeepers who believe they compete with grouse for food and are a carrier of ticks that cause the "louping ill" virus infection in grouse (both claims are disputed by animal conservationists).

Mountain hares in Scotland were given greater protection in March 2021. It is now illegal to intentionally kill, injure or take mountain hares at any time unless a licence is obtained. Previously a licence would be required during the closed season, but this is now the case throughout the whole year.

As the photos show mountain hares are beautiful animals and worth conserving.



Photos taken on the border of Sheffield on Derwent Edge ©Elizabeth Russell

WHAT'S ON

in and around Nether Edge in March 2022

Nether Edge
Farmers'
Market
Sunday 13th
March

Nether Edge Folk Club

...meets **every Wednesday** at 8.30pm.

Complete novices and experienced performers are all very welcome at the Nether Edge Bowling Club, Nether Edge Road, Sheffield S7 1RU.

For further information see website <https://www.netc.uk/> or telephone 07763 932778.

Union Hotel

Union Road, Nether Edge

The popular **Monday Night Pub Quiz** starts at 9pm. All welcome.

Wed 2nd March. 9pm **Monthly Pop Quiz**, Union Hotel, Union Road, Nether Edge. Get there early to get a seat

Byron House

Nether Edge Road, S7 1RU

Quiz night - Every Sunday at 9.30pm.

Cash prizes to be won. Tel 0114 2581153

The Lantern Theatre

18 Kenwood Park Rd, S7 1NF

Fri 4th March 7.30pm.

Jane Hair: The Brontes Restyled.

'Howarth's Hair and Beauty is open for business. Stylists Anne, Emily and Charlotte Bronte are back taking bookings for an evening of sibling rivalry and literary debate at Bradford's most creative beauty salon'.

Sat 5th March 7.30pm.

The Antics eagerly return to the Lantern Theatre for an evening of totally improvised comedy. Expect a fast-paced evening of different characters performing unique sketches, songs, and punny one-liners. All scenes are made up completely on the spot, based on live audience suggestions.

Mon 21st to Sat 26th March 7.30pm.

A View from The Bridge by Arthur Miller. 'Set in the shadow of the Brooklyn Bridge in the 1950s, Longshoreman Eddie Carbone and his wife Beatrice have raised their niece, Catherine, who is now coming of age. Presented by The Dilys Guit Players.

Tickets for all events: lanterntheatre.org.uk. TicketSource Tel: 0333 666 3366



Café #9

Nether Edge Road, Sheffield, S7 1RU

Thur 10th March 7pm.

Matt Woosey. 'His self-penned songs are conveyed with an accomplished vocal delivery which has gained him praise from sources such as Paul Jones (Radio 2), Tom Robinson (BBC6Music)'. Tickets £13.75.

Fri 18th March. 7pm.

Ida Wenøe and Samantha Whates.

'Through touring as separate co-headliners, the pair regularly collaborate and join each other on stage to perform arrangements for each other's favourite songs'. Tickets £16.50.



Sun 20th March. 7pm.

The Brothers Gillespie.

Described by Folk Radio UK as 'weaving an' especially compelling magic' and 'showing off British acoustic music in its best possible light'. 'Northumbrian duo sing songs of great lyrical power, animated by the sound of soaring sibling harmony, inspired guitar playing and rich array of acoustic instruments. Tickets £13.75.

All Café#9 tickets from WeGotTickets.



Ida Wenøe and Samantha Whates

Abbeydale Picture House

387 Abbeydale Road, S7 1FS.



Sun 13th March 2-9pm

A day of live-scored silent film at

Sheffield's beautiful and historic Abbeydale Picture House. With live music by Yorkshire Silent Film Festival musicians. Each film can be booked separately and include Another Fine Mess: Laurel and Hardy, Buster Keaton: The Navigator. Hell's Hinges and Underworld. All day ticket £32.93 from eventbrite

Hidden River Trust Tours

Sat 26th and Sun 27 March

'Sheaf and Porter Rivers Trust invites you to explore the **hidden rivers of downtown Sheffield** in the company of an experienced caving guides. Tours will be running from 10am, 12noon, 2pm and 4pm. Each tour will take a maximum of 15 people. Minimum age limit 14 and participants need to be reasonably mobile. Please don't bring pets. Tours start at Triple Port Brewery. 178 Shoreham Street. S1 4SQ. Tickets are £20 each and available from Eventbrite/Sheaf and Porter Trust.

Friends of the Botanical Gardens

Mon 7th March 7.30-9pm

Dr Timothy Walker 'What have plants ever done for us?' Online lecture. Rarely does a minute go by when we are not involved in any activity that would be impossible without the help of plants. For more information contact on fabslectures@gmail.com

Tues 22nd March 10.30-12pm.

David Thornton 'Growing Better Veg this Season'. Live Lecture. Gain hints and tips from experienced vegetable grower David Thornton to maximise the results from your hard work in your vegetable plot. Taking place in the Dorothy Fox Centre, in the Botanical Gardens, towards the Thompson Road entrance.

Tues 22nd March 1-2pm.

Early Spring Bulbs and the Pavilions Public Tour. One hour long public tour at 1pm. Meet at the Thompson Road gates (off Ecclesall Road) at 12.50. There's no need to book, you can just turn up. *Recommend people taking the tour to make a £3 donation to the Gardens.*

The Outdoor City



Sheffield Half Marathon 2022

Sun 27th March 9.30am-12noon. A major event in the UK's running calendar that attracts thousands of runners of all abilities and spectators to the city's streets and raises many thousands of pounds for numerous good causes. *For more information go to Sheffield Marathon*

Sheffield Cemetery Trust



website.

Sun 6th March 1pm-2pm.

Wives and Relicts Tours

Mark international Women's Day by learning about the lives of women, rich and poor, linked to the Cemetery. The book 'She Lived Unknown' which complements the tour will be on sale during the afternoon. Tour will end at the Samuel Worth Chapel, refreshments will be available. Tour starts at the Gatehouse, top of Cemetery Avenue. *Book tickets for the 1pm or 2pm tour- £5 per person, pre-booking essential. Contact sgct@gencem.org. Tel 0114 268 3486.*

Sun 6th March 1.30pm-2.30pm.

March History Tours

Ever wanted to learn more about Sheffield's Victorian history? Why not start with a fascinating guided tour of the Grade II listed historic cemetery. Meet the residents who shaped Sheffield's history, from Mark Firth and Samuel Holbery to the Cole Brother and George Bassett, and many more. Contact sgct@gencem.org for updated information. Tel 0114 268 3486. Meet at the Gatehouse, Cemetery Avenue. *Suggested minimum donation £3*

Sun 13th March 2pm-3.30pm.

Death Café- With Penny Merrett

End of Life Doula, Penny Merrett will be hosting our very first Death café, at the Samuel Worth Chapel. At a Death Café people often strangers, gather to eat cake, drink tea and discuss death. *For more information visit : <https://deathcafe.com>. [ticketsource](https://ticketsource.com)*

The Felling

The Felling, a feature film documenting the fight to save Sheffield's street trees, premiers 20th March at the City Hall.

Tickets available: www.fellingfilm.com

NENG AGM

The NENG AGM will be on Wednesday 30th March at 7pm on Zoom

Contact ken.lambert227@gmail.com to obtain Zoom link and password

NETHER EDGE FAIR

Support local independent makers:
Art & Jewellery; Body & Bath;
Crafts & Clothes; Eco & Charity;
Food & Drink; Garden & Outdoors;
Home & Toys

For Easter, Birthdays,
Anniversaries, Every Day

*FREE Personal Present Shopping Service
available: jlallen1812@gmail.com*

<https://www.netheredgefair.com>

(After website costs) every penny goes to charity

Nether Edge Farmers' Market

12 noon to 4pm
SUNDAY 13th March 2022

... over 70 stalls & shops,
cafes... Hot & Cold food
... Free Entertainment...
...Live Music !! ...

**Nether Edge Road
& Glen Road, S7 1RU**

.... something for everyone !

www.netheredge.org.uk

by Victoria @ Neowatercolour.com



LAURA ASHLEY
THE TEA ROOM



Treat yourself this Winter

BOOK NOW FOR THIS AMAZING OFFER - 25% discount

Available until 31 March 2022 for all Netheredge residents

This offer is available on Afternoon Tea, Brunch and Tea and Coffee too if you just fancy popping in for a hot drink! Our opening days will be Saturday - Wednesday 12pm-4pm.



KENWOOD HALL HOTEL

Kenwood Road, Sheffield,
South Yorkshire S7 1NQ

t: 0114 250 5619
e: thetearoom@kenwoodhall.co.uk
www.kenwoodhall.co.uk

