



**NENG**

# EDGE

**Nether Edge Neighbourhood Newsletter**  
**Summer 2022: July/August**

# HOUSE SPARROWS



**INSIDE:**  
**THE JUBILEE**  
**IN NETHER EDGE**  
**& OPEN GARDENS**



The Nether Edge Neighbourhood Group was set up in 1973 with the following aims:

To improve the conditions of life especially of those living or working in the areas of Brincliffe, Nether Edge and Sharrow in Sheffield, without distinction of sex or race, or of political, religious or other opinions, by associating with local authorities, voluntary organisations and residents in a common effort to advance our education, to improve the environment and to provide facilities in the interest of social welfare for recreation and leisure time activities.

Company limited by guarantee  
No. 07414080

Registered charity no 1139239

**Individual views expressed  
are not necessarily those  
of the group**

# EDGE JULY/AUGUST 2022

This issue of EDGE was edited by **Ken Lambert & Ruth Bernard**

Design & artwork: Stephen Houfe (stephenhoufe@gmail.com)

If you want to contribute to the September edition, please contact the EDGE Editorial Board – nengeditorialboard@gmail.com

## NENG Committee Members

*\* indicates Trustee / Director*

\* **Ken Lambert** (Chair, Company Secretary & Membership Secretary)  
32 Thornsett Rd S7 1NB. 07518 118789 ken.lambert227@gmail.com

**Ruth Bernard** (Vice Chair & EDGE Editorial Board)

\* **Howard Fry** (Secretary & Market) 20 Chelsea Road S11 8BR  
howard.fry@icloud.com

**David O'Connell** (Acting Treasurer) 9 Cherry Tree Drive S11 9AE  
nengtreasurer@gmail.com

**Tayab Fayaz** (Accountant)

\* **Richard Taylor**

\* **David Pierce** (Market & EDGE Editorial Board)

\* **Marion Gerson** (Market)

**Vicky Phillips** (Festival, netheredgefestival@gmail.com)

**Nicky Erlen** (EDGE Editorial Board)

**Helen Willows** (Planning)

**John Austin** (History Group)

**Kevin Hickey** (EDGE Editorial Board)

**Stephen Houfe** (EDGE Editorial Board)

**Pat Rogers**, Minutes Secretary

**Rosalind Watchorn**

**Kate West**

**Kevin Bonnett**

To contact individual members of the committee or for contact details of the various sub-groups, please go to the NENG website : [www.netheredge.org.uk/](http://www.netheredge.org.uk/)

## Nether Edge Neighbourhood Group Application for Membership/renewal

I wish to join / continue to support\* the Nether Edge Neighbourhood Group (NENG) and receive the 'EDGE' magazine by hand delivery / by email\* and enclose / have sent\* my annual subscription of £

*\*Please delete as appropriate*

Name

Address

Postcode

Tel

Email

- Your contact details will only be used in connection with your EDGE subscriptions or NENG membership.
- The annual subscription for EDGE is £10 per household, commencing on 1st April each year. Any additional donation to the work of NENG is welcomed.
- Subscribers living outside our distribution area will only receive electronic copies of EDGE, or you can choose to receive EDGE by email by selecting this method above.

Cheques should be made payable to **NENG**, but please bear in mind that everyone in NENG is a volunteer, so we would far prefer to receive payment by Standing Order or by bank transfer (Sort code 30-97-51 A/C 36208368 NENG), as this greatly reduces the administration burden on both your local EDGE distributor and on NENG itself. Copies of a Standing order form (you can alternatively set one up online) to send to your Bank are available from ken.lambert227@gmail.com whom you should advise when you have set up a standing order or made a bank transfer so that records can be updated.

Signature

Date

*As a local resident/ supporter of NENG, I also wish to become a full Member of NENG, a company limited by guarantee, which entitles me to full voting rights at the AGM, receive regular copies of EDGE and fully participate in its activities. In the unlikely event that the Company has to be wound up, I agree to pay the sum of £1 towards its debts if asked to do so. I understand this liability will continue for one year after I cease to be a member of the company.*

PLEASE NOTE: Should you prefer **not** to become a full member of NENG you still can be just an EDGE subscriber by deleting the section in italics above. This entitles you to receive copies of EDGE but no entitlement to vote. The annual subscription is the same.



## Good, bad and ugly

**Ken Lambert & Ruth Bernard**

**The good;** above we have photos of the Frog Walk Pocket Park and the flower baskets at the Nether Edge crossroads. Both are supported by NENG. The Pocket Park is looked after by an enthusiastic group of local amateur gardeners. For many years, the flower baskets were nurtured by Gina and David Pearce, often lugging water from their house on Montgomery Road; they were supported by a group of local neighbours. As Gina and David have moved a little further out, the flowers are now looked after by Grow, the local charity that has featured several times in the pages of EDGE.

Sadly, the bad and ugly are words that can describe the local bus shelters. Whilst they do afford shelter from the rain, they are not a very good advert for public transport. An article in this edition looks at something we can all do about their sorry state.

**Transport** – mentioning public transport brings us to the current hot topic of the Nether Edge Active Neighbourhood, which has split the community. As there are views, some very strong, on both sides of the argument, which we have tried to reflect in the pages of the last few editions of EDGE, NENG does not wish to take a position either for or against.

However, we do share concerns that the implementation of the road closures (actual in the case of Archer Lane, potential regarding Union Road) and a new one way system on Nether Edge Road, has been badly handled. Whilst there was a major consultation on the original proposals, there seems to have been none on what has actually happened, and also no advance warning for drivers. We have never seen the criteria for selection of the changes, neither are we aware of what the success criteria might be in the evaluation (what evaluation? you might ask). We have a particular concern about increased air pollution, notable around Nether Edge school, and a small group from the NENG committee is looking how we might best record this in an objective way.

The Active Neighbourhood is, of course, not the only traffic issue and problems are not confined to just one part of Nether Edge and Sharrow. Parking, speeding, idling engines etc are all things that worsen the environment. Several of you have written to EDGE about various issues and we are trying to start a dialogue with the Council and our three local councillors on how to improve the situation. We will put any breaking news on the “traffic” page of the NENG website.

## OPEN GARDENS 2022

Nether Edge Open Gardens, sponsored by the Nether Edge Neighbourhood Group, was held on a glorious, sunny day in June, and the numerous visitors donated large amounts to various charities.





# Increasing the population of House Sparrows locally

Paul Selby



Nether Edge and Sharrow Sustainable Transformation (NESST) is focused on doing what we can to improve our local environment and biodiversity. We have the motto: “thinking globally, acting locally.” Our two most well-known initiatives recently have been the 34 additional street trees we’ve coordinated funding for and the Buckthorn for Brimstone butterflies initiative.

However, launched in January this year, our House Sparrow initiative has also created a lot of interest from our 440 members. But why have we picked the House Sparrow for conservation efforts? Well, nationally, their population has fallen by over 50% in just under 50 years. The reasons for this include:

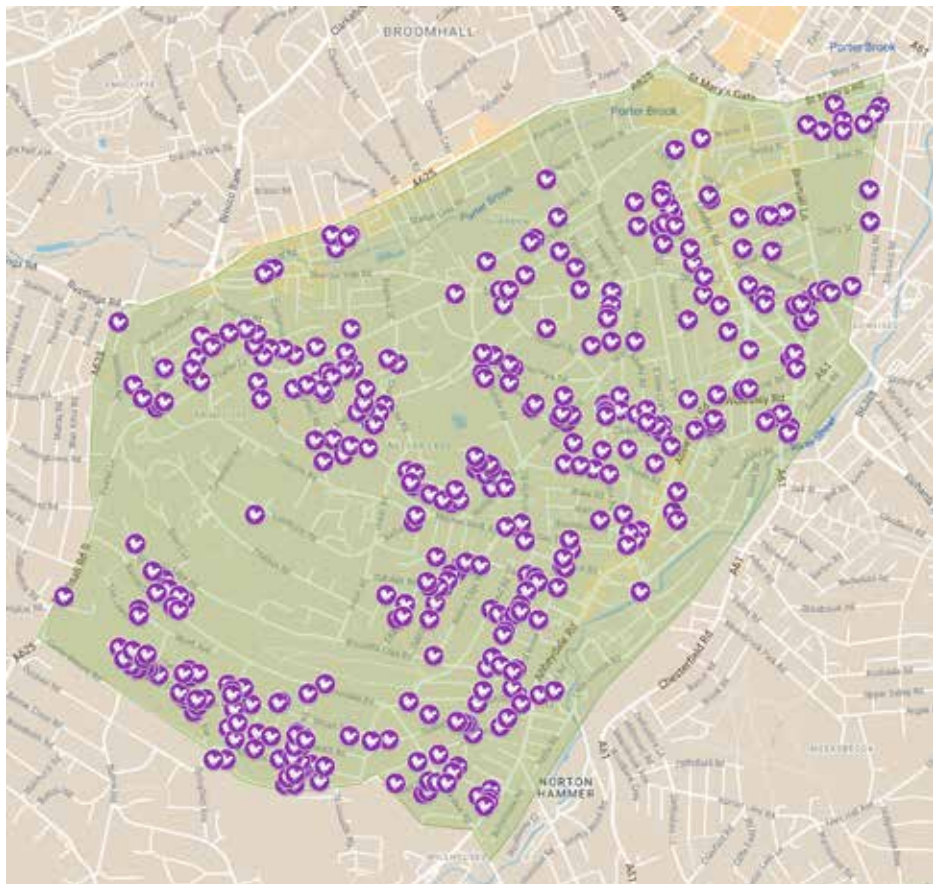
- Better upkeep of housing, including gutters and roofs – removing nesting opportunities.
- Removal of hedges – House Sparrows love to congregate in tightly clipped hedges for safety.
- Less insects – Whilst House Sparrows feed on seed most of the year, they feed their young on insects. The overall insect decline has reduced breeding productivity.
- Increases in Nitrous Oxide levels from road pollution – Also associated with reduced breeding productivity
- An increased cat population which predate them – 26% of households now own a cat, a proportion that has steadily increased over the years.
- Their sedentary nature – House Sparrows rarely move very far during

their lifetimes, usually feeding and breeding very close to where they were born. Destruction of nesting holes and habitat often means the collapse of a colony, with them failing to disperse to other suitable locations, even if it is relatively close by.

But many bird species have declined, why are NESST focused on House Sparrows? The reason is because they are so familiar to so many people, by sight and by sound. Their cheerful chattering during most of the

year is a memory from childhood which is much less often heard these days, and so people are more likely to potentially act to help conserve them. In addition, many of the things we aim to do to support and increase the House Sparrow population locally will benefit a whole host of other species too.

Because of their sedentary nature, there is limited benefit of putting up nest boxes 200 metres or more away from a known House Sparrow colony, at least not in the short term. So, the first thing NESST needed





to do was map all our local House Sparrow colonies. We have done this systematically and thoroughly, with 23 volunteers carrying out three early morning survey visits to “their patch” during April and May. This has resulted in this map showing where all the breeding activity of House Sparrows has been in the NESST area, in 2022.

In total there appears to be around 39 main colonies. Some colonies appear very small, and at severe risk of collapsing. Others, such as an extensive colony surrounding the Montrose Road/Glenorchy Road/Glentilt Road junctions look to be doing very well.

Also of note are the completely barren areas of the map, which are of two types. Firstly, the area around Chelsea Road, Lyndhurst Road and Osborne Road, where there are tidy gardens and well maintained houses. Secondly, the areas around the two rivers, often with very high density housing or commercial activity.

Now we have this knowledge of where the local House Sparrows are, we can take efforts to sustain and increase each colony. Within 50 metres of each known colony, we want to do the following things:

- Erect House Sparrow colony nest boxes
- Plant hedges

- Seek to plant wildflower meadows to increase insect numbers.

This is a long-term project, but we are confident that it can start to make a difference within a year or two.

We now need your help. Taking a look at the map of existing House Sparrow colonies, if you live within 50 metres of one, would you be willing to do any of the following three things:

- a) Have a House Sparrow colony nest box attached to your house?
- b) Plant a hedge in your garden?
- c) Convert part of your garden into a wildflower meadow?

If yes to any of the three things above, email NESST at: [info@nesstsheffield.org](mailto:info@nesstsheffield.org)

It may take us a while to respond to you, but we will do later in the year. When we do contact you, we will work with you and advise you on the best way we can work together to maximise the positive impact on House Sparrows.

Practical conservation efforts don't have to be hard work. If you'd like to join NESST and hear more about our initiatives and how you can get involved, sign up for free via our website: <http://www.nesstsheffield.org/membership/>



## Abbeydale Road Parklet

**Joel Gilbert**

We set up Abbeydale Street Trees in 2020 with the aim of getting 30 trees planted along Abbeydale Road to make it a more green and attractive place to live and visit. This has largely been achieved, though most trees are just off the main road, and we have also planted saplings and trees at Holt House and Nether Edge primary schools, St Oswald's Church and outside the small Tesco's near Broadfield Road.

Last year we decided a great next step would be to install a parklet, to turn a space used for car parking into one for people and other nature. After consulting along the street for potential sites we settled on the dead-end next to Greek Village.

The council agreed to fund us through its Economic Recovery Fund. Initially, they recommended Amey to install and maintain it, but when we saw how much they were charging, and the uninspiring designs they were offering, we decided we'd try to do it better ourselves. Jon, from Strip the Willow on Abbeydale Road, agreed to make and maintain the site at a fraction of the cost and using upcycled materials, with a design befitting of the vibrant and eclectic atmosphere of the street. And we're very glad he did. Today, when you go past, you can see children jumping on the benches, people waiting for the bus or else just socialising, and bees on the flowers. It makes us very proud, and excited to think about what the next project in Sheffield might be.

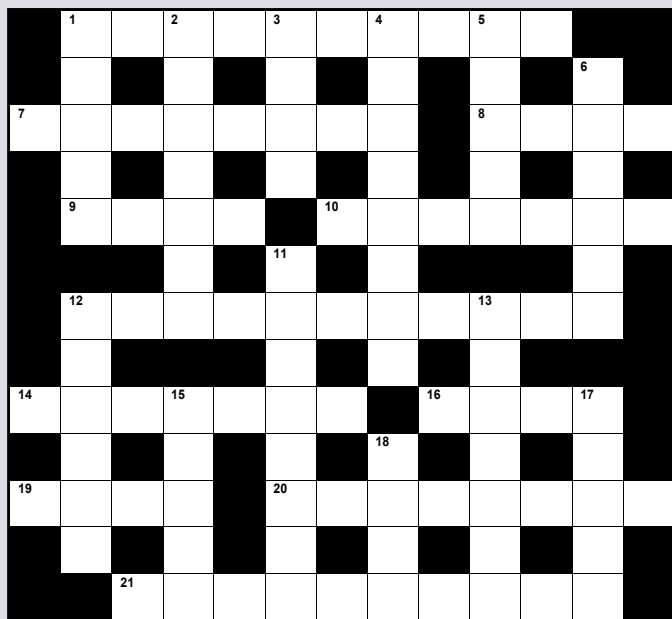
The parklet will be in place for an initial three years but we hope it will become a permanent fixture. As with the street trees we have planted, it is down to the community to maintain it, so if anyone would like to assist with watering and weeding then please get in touch - or just head down there with a watering can.

*We also hope the parklet can be a community hub so if anyone would like to use it for an event please email us on [abbeydaleroadtrees@gmail.com](mailto:abbeydaleroadtrees@gmail.com)*



# SPRAT'S TWELFTH CROSSWORD

Adults should find this crossword quite easy. Children might find it quite hard. Together, they might find it quite fun. *Answers on page 11*



## Across

1. Old-fashioned weapon (10)
7. Stretch of heathland, home to convicts and ponies (8)
8. Curved structure, spanning an opening (4)
9. Takes small drinks (4)
10. The art of shooting bows and arrows (7)
12. Pantomime (4,2,5)
14. British soldier, at the time of the Jacobite rebellion (7)
16. Meat and vegetables, cooked slowly (4)
19. He doesn't tell the truth (4)
20. Spotted insect (8)
21. Renewable power (4,6)

## Down

1. Alloy of copper and zinc (5)
2. Sea creature with lots of legs (7)
3. Arab boat with lateen sail (4)
4. Clothes cupboard (8)
5. Freshwater fish or American insect pest (5)
6. His wings fell off when he flew too near the sun (6)
11. Handicapped (8)
12. Another name for the lapwing or green plover (6)
13. The tenth month (7)
15. Welsh dog (5)
17. Make anxious (5)
18. Garden where Adam and Eve lived (4)

# Our Neglected Bus Shelters

**Jack Massey**

To my mind, nothing makes an area look more neglected and unloved than graffiti and fly posting. The 56 bus route on our side of the city has eight bus shelters – all of them vandalised to a greater or lesser extent. Apart from being eyesores, they don't exactly encourage people to use public transport. As we've proved with the graffiti on the shops at the end of Wostenholm Road, if it remains, it gets added to, but if it's removed it doesn't tend to come back. TravelSouthYorkshire has a statutory duty to keep the shelters in good order – a duty which they don't seem to take too seriously. I'm a firm believer in the principle – 'It's the squeaky wheel that gets the grease'.

TravelSouthYorkshire's phone number is 01707 515151. Below is a list of bus shelters. Get Squeaking!

**Into town:** Terminus Union Road/Nether Edge Hospital 37020929; Moncrieffe Road/Sheldon Road 37021102; Montgomery Road/Kenwood Park Road 37021153; Wostenholm Road/Priory Place 37021151; Washington Road/Mackenzie Street 37021147; Boston Street/London Road 37023454

**Out of Town:** Washington Road/Mackenzie Street 37021148; Boston Street/London Road 37023453



## Nether Edge History Group DROP-IN EVENT



### Interested in Local History ?

### Want to know more about the history of Nether Edge ?

Why not come along to our informal drop in event and check us out ...what we do, how we operate, what our plans are post Covid. Membership of the Group is free and we cater for every level of interest and experience. And if you are already a member,

come along and renew contact now we are coming out of Covid hibernation.

*Where: The Union Hotel, Union Rd*

*When: Tuesday July 19th*

*Time: Anytime between 6-8pm*

# Pets at Rest vet home visits

pets at rest veterinary care

[www.petsatrestvet.com](http://www.petsatrestvet.com)

07866243673

[petsatrestvet@gmail.com](mailto:petsatrestvet@gmail.com)

final farewells in familiar places



# The 2022 Jubilee in Nether Edge



A personal take by John Austin



When the History Group, contemplating the Platinum Jubilee, looked for material relating to previous Royal Jubilees in Nether Edge it found hardly any. Either there were no local celebrations or the material was lost. Determined not to lose the opportunity this time round the Group decided to compile a visual and narrative record of this years' event, contacting a range of bodies and individuals in, or representative of, the neighbourhood.

The exercise, still underway, has already, for me, revealed an unexpected glimpse into the character of the neighbourhood. Most significantly, a realisation that, if the sponsors of the event were hoping it would generate a widespread coming together of the community, then it missed the mark.

Attitudes to the event generally fall into 4 camps. The enthusiasts who thought it a wonderful opportunity for communal celebration. Opponents who felt the whole jamboree an offence to their republican or internationalist principles. Those totally oblivious or indifferent. And those happy to go with the flow for a variety of reasons whether welcoming an opportunity to party after 2 years of misery, or having a grudging respect for the Queen, even if not actively convinced by the institution of the monarchy.

This range of views was very much echoed in the ranks of the NENG Committee and explains why there was no co-ordinated effort on its part to push the event...no talk of beacons, no take-up of the Green Canopy free trees offer, no 'Party in the Park'. Instead the Committee decided on a passive appeal to 'Party' together with an vague offer of help if asked. The stated rationale behind this position was a reluctance to undermine street initiatives though it was, in truth more a device to allow everyone to save face.

The lack of a co-ordinated campaign across the community meant responsibility for events fell on individuals and individual bodies. Many seized the opportunity with relish. All Care Homes in the area organised celebrations with gusto, as did the 3 main Primary schools. The Nether Edge Club hosted a free BBQ. The Nether Edge Bowling Club launched a new Jubilee Crown Green Competition. The Archer Road Allotment Society organised a full morning of activities. Family Voice, a local charity working with BAME women, organised a trip to London funded by Sheffield Council in celebration of the Jubilee. And on Kingfield Road the Orthodox Jewish Synagogue hosted a lavish lunch for 60 of its members. There were also a number of private household parties held.

On the other hand there was considerable disquiet about the event, though usually expressed discreetly. Few streets in Nether Edge took up the Council's offer to allow street closures, around 4 out of a city wide total of around 100, and even here a general ambivalence was evidenced either by the sponsors insistence that the event was not to be seen as an endorsement of monarchist sympathies and /or choosing a date disconnected from the Jubilee weekend. It seems also that on a number of occasions the idea of a street party was floated only to be abandoned in the face of indifference or opposition.

Similarly when NENG offered to put up bunting at the main crossroads some shops were enthusiastic, others tolerant. Two categorically refused. One agreed and then decided against. It seems an antipathy to the monarchy and a reluctance to be associated with the Union Jack were the main reasons.

Perhaps most significant was the dearth of spontaneous Jubilee themed displays in the neighbourhood. Volunteer photographers, sent out to capture quirky images found little to record, or in the words of one volunteer 'bugger all'.

In most cases these different viewpoints were conducted civilly, but not always. In some cases emotions ran high. For some enthusiasts the sceptics were 'pompous', 'elitist', 'miserable b\*\*\*\*\*s', 'chuffin pathetic'. For the sceptics those choosing to celebrate were 'vulgar', 'ghastly', 'dupes'.

One resident who canvassed his street about holding a Party was trolled, called an idiot for supporting a Queen connected to paedophilia, slavery and world poverty, and told he/she would 'be getting my car in and out a lot that day'.

So, what conclusions might a future local historian, drafting an article on 'The Platinum Jubilee in Nether Edge' make of all this? That the Jubilee celebrations in Nether Edge were a decidedly mixed bag that revealed as much difference as consensus. And that Nether Edge was perhaps not quite the harmonious, universally tolerant, tightly bonded liberal community the people at the time liked to think it was.



# Jubilee Street Parties in Nether Edge



Twelve Hills Care Home



Tavistock Road



The Union



Ryle Road





Kingfield Synagogue  
Tubilee Lunch



Archer Road Allotments



Nether Edge Club





## QUEEN'S PLATINUM JUBILEE

### A popular culture quiz

Or what she has had to endure down the years!

Here are 8 images – one from each decade of the Queen's reign – on popular culture of the time – followed by 8 questions on the image.



1 1950s. Who is this film star?



2 1960s. Which country did the Beatles conquer in 1964?



3 1970s. What is the name of this band?



4 1980s. Name of film character?



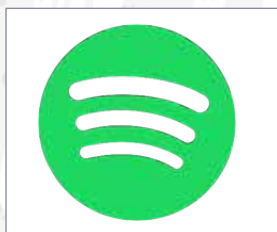
5 1990s. Name of TV character?



6 Noughties. US rapper's name?



7 Twenty tens. Who is this singer/songwriter?



8 The 20s. Which organisation has this logo?

**What word do the first letters of each answer spell out? Clue – it's something the Queen has experienced 6 times.**

Answers opposite

## Archer Lane Allotments Jubilee Celebrations or thank goodness for gazebos!



### Gareth Powis – Committee Member

How on earth, you may ask, does an Allotment Society celebrate the Queen's Platinum Jubilee? Quite simply really – have an Open Art Day!

Thanks to the expertise of Sophy Sylvester, one of our committee members, the Society obtained a grant from Arts Council England (through South Yorkshire Community Foundation) enabling it to engage artists who led hands-on creative activities on the theme of the Royal Gardens. Professional local artists, Kate Sully and Sara Beavan-Widdowson, led engaging activities for children and adults - of all ages. If you have seen any bejewelled wooden Queen bees about, they almost certainly came from here. We hope to have a banner showcasing some of the art work outside the Pavilion on Show Day (see below).

One of our members Alison McHale assisted anyone who wanted to make bunting and Carolyn Clarke used her bee-keeping expertise to make beeswax candles. Edward Millman was on hand to disseminate his knowledge of bats and explain how to build a bat box using recycled wood. An entertainment interlude by the 3 piece Grumpah! Band was very well received – the dampness did not seem to affect the sousaphone! Everybody seemed to know the words of 'Sweet Caroline'.

Well over 50 visitors had a go at the Treasure Hunt around the allotment site – a real family friendly event. The cake stall sold out and many local gardens and windowsills are adorned with the profusion of plants that were bought.

Did the weather spoil it? It certainly didn't help, but for the bulk of the event it was just damp. The driveway leading up to the Pavilion had gazebos on both sides with the crowd in the middle. Fortunately, heavy rain held off until about 2.30pm as events were finishing and a large number of smiling faces headed home.

*The next Archer Lane Allotment and Home Garden Society event for your diary is the Society's Annual Flower and Vegetable Show on September 3rd, back on track after a 2 year Covid break. Full details are available at the Pavilion any Sunday morning when our shop is open from 10.00 – 12.00, we look forward to seeing you there. The Society always welcomes new members whether you have an allotment or just a keen gardener.*







## SHOP LOCAL

Ruth Bernard

One of the aims of the Nether Edge Neighbourhood Group is to encourage the support of local independent shops and cafes. The people behind the counters are often the owners and when you spend your money, you are giving it to the people who have worked hard to establish the business. They also, very often, contribute to the local community in other ways. So, when Bare Alternative, on Abbeydale Road, posted on Facebook that they had recently seen a downturn due to the rises in the cost of living, I went along to talk to

Mathew Reynolds, the owner (<https://www.barealternative.co.uk/>).

The Bare Alternative offers a wide selection of whole food and cooking ingredient refills, all available package-free, meaning that customers can refill their own containers to take away. They also sell natural cleaning products (Laundry and Washing Up Liquid, Hair Shampoo and Conditioner, etc), and other products such as Bamboo Toothbrushes and Metal Straws, with the aim of reducing waste. The shop first opened in November 2018 and managed to survive through COVID and thrive so far as they moved into a bigger shop in December 2020.

However, in May this year, Mathew posted on Facebook: "This is a difficult post to have to make as I find it hard to ask for help. I'm so proud of what The Bare Alternative has become in a short period of time, but recently we are seeing some of the quietest days we've had in a long time and expecting this month to be down 20% on takings from this time last year". One of the reasons he decided to open the business in this area was that he felt it was a community that would support a zero-waste shop, and Mathew reports that they do have a very loyal customer base. They are aware that everybody is 'feeling the pinch' and are concerned that this will only get worse as

the recession continues to bite. The shop employs 4 part-time staff, and running costs are higher as they support paying a fair wage as a Living Wage Employer.



The shop staff were very pleasantly surprised at the response to the Facebook post, with almost 40,000 views. There has been a definite upturn in the number of customers, and The Bare Alternative team are very grateful to everyone who responded and supported the shop.

Mathew also said in his post that "I'm sure there are other individuals needing a little more support who work just as hard to keep things going at all the other fab independent shops, cafes and bars on Abbeydale Road". If we don't want to see other independent businesses close, #ShopLocal'.



## Directory of Local Groups

The Nether Edge Neighbourhood Group would like to compile a list of social and activity groups that exist in Nether Edge. The aim is to help new and established members of the community find a new activity and/or make new friends. It could also help groups that want new members.

There is already a well-known tennis club and bowling club, are there less well-known sports being played in Nether Edge? Are there activities such as gardening or walking represented by a group? There are probably many based around various arts and crafts, and there is the NENG History Group, but what about groups that meet to discuss politics, books, philosophy or the environment?

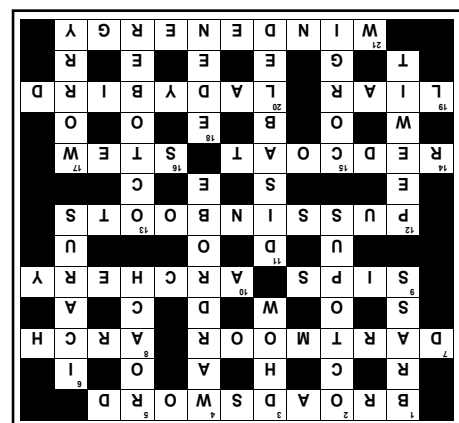
Please let us know of any group that you would like to be included on the list, with a concise description and contact details. We hope to publish it in a future Edge and would also be kept on the NENG website. Thank you.

Email Stephen Houfe at [s.houfe@icloud.com](mailto:s.houfe@icloud.com)

Illustration created by freepik - [www.freepik.com](http://www.freepik.com)



## CROSSWORD & QUIZ ANSWERS



### ANSWERS TO QUEEN'S PLATINUM JUBILEE QUIZ

1 James Dean; 2 USA; 3 Blondie; 4 Indiana Jones; 5 Lisa Simpson; 6 Eminem; 7 Ed Sheeran; 8 Spotify. The answers spell out the word JUBILEES. The Queen has celebrated 6 - silver, ruby, gold, diamond, sapphire and platinum.



# Sterndale Singers are singing for South Yorkshire Refugee Law and Justice

**Robert Spooner,**  
former Chair of ASSIST Sheffield

A distressed young woman arriving in Sheffield by lorry had no English, and no idea what country she was in. Fortunately it was a Wednesday, when the refugee drop-in at the Victoria Hall was in full swing. I can't remember where she came from, but to her relief she soon found herself talking to a fellow countryman, and thought she needed no further help. She was persuaded to accept help – to get a solicitor before she was taken to the police, who would immediately have taken her to Immigration HQ in Croydon. But not just any solicitor: South Yorkshire Refugee Law and Justice [SYRLJ] knows who to go to and will help her get evidence of why she was forced to flee her country. She may get help for shelter etc. from ASSIST, who have been greatly helped by the Nether Edge market in times past. She will be welcomed by Sheffield City of Sanctuary; but like the 50 or so people presently being helped by ASSIST, she cannot move her case on without legal help.

Some asylum seekers will have been here for years, trying in vain to persuade solicitors to take their case with legal aid. Often they are so traumatised when they arrive that their story does not hang together, and they are therefore not believed by the Home Office. They are unable to return to their country because they would face persecution on the grounds of their



nationality, race, religion, political opinions or sexual orientation; they would rather sleep on the street here than return there. They are not allowed to work and can receive no benefits. They are terrified of the present threat - being sent to Rwanda.

This is where SYRLJ come in – they are a small charity who help such people to use the law to remain legally in the UK. Asylum seekers are helped to make new applications to obtain refugee status. SYRLJ experts have many years of experience and supervise talented volunteers including law

students. They research conditions in the asylum seeker's country of origin and the unique circumstances of the individual, e.g. finding video evidence of a political protest where an asylum seeker was arrested. I think we are all aware of the horrific injustices suffered by women in some of the countries we hear of.

SYRLJ's work requires money to pay for expert reports, e.g. medical reports for victims of torture; for travel expenses and interpreters; for copies of Home Office records; for volunteer training; and rent for office space. Restrictions on legal aid make this help vital in enabling solicitors to proceed with a case.

**Sheffield choir the Sterndale Singers is raising funds for SYRLJ by performing a concert of 'Music from Stage and Screen' at the Central United Reformed Church, Norfolk Street, at 3.00pm on Sunday 10 July. Admission free, collection for SYRLJ.**

South Yorkshire Refugee Law & Justice  
[www.syrlj.org.uk](http://www.syrlj.org.uk)



## Nether Edge Festival

We're busy getting ready for this year's Nether Edge Festival. It's being held on Saturday 10th to Sunday 18th September and we've got lots of exciting events on for everyone!

Find out more on our website - [Netheredgefestival.co.uk](http://Netheredgefestival.co.uk) and keep an eye on the Nether Edge Festival Facebook page for all the latest news and events.

We'll be delivering our full programme through your letter box at the end of August.

You can also sign up to our mailing list at [Netheredgefestival.co.uk](http://Netheredgefestival.co.uk) for the occasional email with updates on the festival and shout-outs for volunteers.

We always need volunteers at our big community events like the Inflatable Carnival and the Picnic in the Park. If you'd like to lend a hand please do sign up to our mailing list, saying that you would like to be a volunteer, and we'll send out further details nearer the time. **Look forward to seeing you in September!**







# Nether Edge BAME Women's Page



## Shabana's Fruit Chaat

1. chop a selection of fruit into small pieces - I like apples, bananas, grapes, kiwis and peaches
2. add some yoghurt, black pepper, a pinch of salt and some fruit chaat masala to taste



Chaat is a spicy, tangy fruit salad popular in Pakistan and India. Fruit chaat masala is the spice mix you buy which often includes chilli, muskmelon, cinnamon, cumin, coriander, cardamom and cloves.

## Fatima's crochet



I grew up in a big house in the Czech Republic with my grandma, my mum, my cousin, his wife and their 3 kids, a cat and 2 dogs! My mum and grandma used to make our slippers, sweaters, socks and everything - even doll's dresses! I remember watching my grandma crochet in the living room while we were watching tv. Eventually I asked her to teach me. We also learnt to crochet at school. My favourite things to make are toys and baby items.

## Mina's Memories from Home



- I am from Iran. My dad died when I was 2 so we had to help mum get by. I loved her food, so I always wanted to learn how to cook it (unlike my little sister!) There was a big apple tree in our yard with juicy, sour apples - like from paradise! We love the sour taste in Iran. My sister and I used to climb up and sit on the branches of that tree. Sometimes we went with visitors up the mountain. We'd take water, bread and cheese and fill our sandwiches with salad leaves. In the spring we'd pick mushrooms, mum taught us which ones were the poisonous ones, and by the river we'd pick wild oregano and watercress. I also remember the mountain parsley smelling soooo strong!

If you are a BAME woman in Nether Edge and would like to contribute to this page please contact us on: [info@familyvoicesheffield.org](mailto:info@familyvoicesheffield.org) / 07951510366





## Designed and crafted with the future in mind.

Using a combination of **high-quality** fixtures and fittings, and **eco-friendly** materials, whether it's high recycled content, reclaimed or sustainably sourced, we create living spaces that are **designed and built to last for decades**.

At Sheffield Sustainable Kitchens, we plan, design and fit beautiful **bespoke** kitchens, bathrooms, **utility** and boot rooms, **wardrobes**, **home offices**, **fitted shelving** and more.



Call us today on 0114 250 9078  
or see our website for more information:  
[www.ssk.uk.com](http://www.ssk.uk.com)



Sheffield  
Sustainable  
Kitchens

Quite simply, thoughtful design, quality materials,  
made to measure and built to last.  
Let us help you create your perfect bathroom.



# WHAT'S ON

## in and around Nether Edge in July & August 2022

### Nether Edge Bowling Club

Nether Edge Road, S7 1RU

**Nether Edge Folk Club** meets every Wednesday at 8-10.30pm. Complete novices and experienced performers are all very welcome at the Nether Edge Bowling Club. *For further information see website. [netheredgefolk.club](http://netheredgefolk.club) or email: [folkclubnetheredge@gmail.com](mailto:folkclubnetheredge@gmail.com)*

.....

### FRIDAY NIGHT CONCERTS AT THE BOWLING CLUB

**Friday 1st July - Fargo Railroad Company** (Southern Rock forged and sharpened in Sheffield) - Tickets £10

**Friday 8th July - John Reilly and Lewis Nitikman** (A Celebration of the Music of Elton John) - Tickets £15

**Friday 15th July - Cut Diamond Band** (a 5 piece (minus 1) high-energy crowd-pleasing band playing Neil's legendary songs) - Tickets £7



**Friday 29th July - Edwina Hayes** (Edwina's beautifully written songs, charming state presence and the voice of an angel have won her a reputation as a true natural talent of gentle folk- Americana. Has opened for Van Morrison and Jools Holland as well as her own gigs playing stages at Glastonbury and The Royal Albert Hall amongst many more) - Tickets £10

**Friday 26th August - Katie May Bosworth and band** (young up and coming extremely talented singer songwriter) - Tickets £10. (For you Blades, her music video was played at the match on Sunday, for the rest of us don't hold it against her she is very good!)

*Tickets for all events from Michelle email: [michellepieprzak@hotmail.co.uk](mailto:michellepieprzak@hotmail.co.uk)*

### Markets

**Sun 17th July Pollen Market.** Popping up on the third Sunday of every month, Pollen is an inner-city flower market that delivers an abundance of greenery, live music, art, local produce and more. You'll find Pollen overlooking the river Don at "Grey to Green" in Castlegate. 10.00 - 16.00.

.....

### Sun 17th July Sharrow Vale Market.

Around 100 stalls selling a wide variety of locally sourced and homemade produce. 12.00 - 16.00.

### Sheffield Cemetery Trust

**Sun 3rd July 1.30-3.45pm History Tours.** Ever wanted to learn more about Sheffield's Victorian History? Why not start with a fascinating guided tour of the Grade 11 listed historic Cemetery. Meet the residents who shaped Sheffield's history, from Mark Firth and Samuel Holbery to the Cole Brothers and George Bassett and many more. Contact [sgct@gencem.org](mailto:sgct@gencem.org) for updated information. Tel 0114 268 3486. Meet at the Gatehouse at the top of Cemetery Avenue. *Tickets are £5 per head and can be booked at [gencem.org/new-events](http://gencem.org/new-events) or directly at [ticketsource.co.uk/sgct](http://ticketsource.co.uk/sgct)*



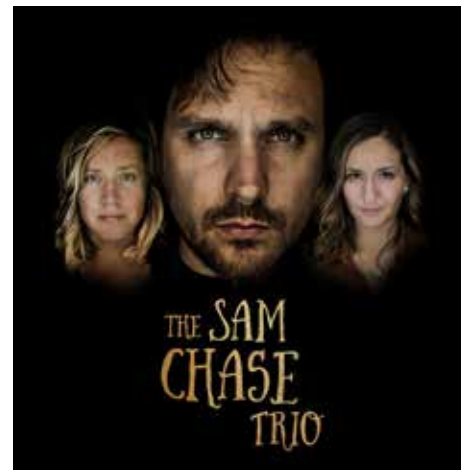
**Sun 3rd July 6-8pm. The Bird's Lullaby – Sonority Choir.** Stunning female vocal consort Sonority present their new programme specially curated for the Samuel Worth Chapel. *Contact [sgct@gencem.org](mailto:sgct@gencem.org) for updated information. Tel 0114 268 3486.*

**Sat 6th August 7-10pm. Otis Mensah** at The Samuel Worth Chapel. Join us for a night of poetry and performance curated by Otis Mensah. *More information and tickets coming soon. [sgct@gencem.org](mailto:sgct@gencem.org).*

### Café#9

Nether Edge Road, Sheffield, S7 1RU

**Tue 5th July 7pm. Terra Lightfoot** a talented, singer, songwriter and guitarist performing her songs that 'tap into the raw emotion of hearts, supercharged by love, lust, loneliness and temptation'. Tickets £16.50.



**Wed 6th and 7th July 7pm. The Sam Chase Trio.** Eminent singer-songwriter Sam Chase with Chandra Johnson violin heroine and Devon McClive renowned cellist perform their distillation of adventure and heartache of American Song. Tickets £16.50

**Fri 8th July 7pm. The Black Feathers** a contemporary folk duo based in Gloucestershire, perform a 'combination of English folk influences, some Irish heritage, and a large splash of Americana inspiration, all held together with close Bluegrass harmonies'. Tickets £16.50

**Sat 9th July 7pm. Bex Marshall** an English-born singer/songwriter, is an established performer on the London circuit. Full of attitude and charm, Bex's charismatic vocals take a popular musical mix of rock and country. Tickets £16.50.

*All Café#9 tickets from [WeGotTickets.com](http://WeGotTickets.com).*

### Union Hotel

Union Road, Nether Edge

The popular **Monday Night Pub Quiz** starts at 9pm. All welcome.

.....

**Wed 6th July and Wed 3rd August 9pm.** Monthly Pop Quiz, Union Hotel, Union Road, Nether Edge. Get there early to get a seat.



## WHAT'S ON cont

### Byron House

Nether Edge Road, S7 1RU

**Quiz night - Every Sunday** at 9.30pm.  
Cash prizes to be won.

### Botanical Gardens



#### MUSIC IN THE GARDENS

**Fri 1st July** 7-10pm

**Pop in the Gardens.** ELO Experience plus  
Chinhopper.

.....  
**Sat 2nd July** 7-10pm

**Jazz in the Gardens.** Featuring Kat Eaton  
plus Nicola Farnon and the Dizzy Club.

.....  
**Sun 3rd July** 4-8pm

**Classics in the Gardens.** Sheffield  
Philharmonic Orchestra plus the Keith Peters'  
Big Band.

*All the above take place in the Botanical  
Gardens. Prices range from £12 - £26 if  
booked in advance and from £15 - £35  
if bought on the gate. It is also possible  
to book a gazebo. Please see [www.  
musicinthegardens.co.uk](http://www.musicinthegardens.co.uk)*

### The History Group

**Tue 19th July** 6-8pm History Group are  
holding a **Drop-in session** at the Union  
Hotel on Union Road. All welcome.

### Victoria Hall

Norfolk Street, S1 2JB

**Sat 16th July** 12 noon and 3pm **Sheffield  
Philharmonic Orchestra Family Proms!**

A fun filled, hour-long orchestral concert  
with active audience participation. Tickets  
online at [Sheffieldphilharmonic.org](http://Sheffieldphilharmonic.org) or from  
reception at Victoria Hall, entrance on Chapel  
Walk. *Tickets in advance: Under 12yrs  
£2, 18yrs £5, Concessions £8, General  
admission £10. Tel 0114 272 1749 for more  
information.*

### Hagglers Corner

586 Queens Road, Sheffield S2 4DU



**Sat 2nd July** 10-4pm **Crochet Cushion  
Day** £60

**Sun 3rd July** 10 - 2pm **Corner to Corner  
Hat Project** £40

**Sun 3rd July** 3-5pm **Make your own  
Buttons and Beads** £35

**Sat 9th July** 10-3pm **Zips, Buttons and  
a Bag** £55

**Sun 10th July** 10.30-1pm **Needle Felt  
and Stitch Landscape** £40

**Sat 16th July** 10-4pm **Free-Hand  
Machine Embroidery** £62

**Sat 23rd July** **Crochet Drop-In  
Consultation Session** £15

**Sat 23rd July** 10.30-4.30pm **Eco Dying**  
- £60

*For details of all workshops please visit:  
[www.rwssheffield.co.uk](http://www.rwssheffield.co.uk)*

### Highfield Adventure Playground

Crowther Place,  
S7 1BJ

**Thur 4th August  
Seminar - Time to  
Sleep by Sheffield  
Parent Hub.** This is an  
information session for all  
parents/carers of children  
12 months + 1-3pm

**Sat 6th August  
Triple P Discussion  
Groups: coping with  
Teenagers Emotions**  
1-3pm

*For further details and  
online seminars please  
see [www.sheffield.gov.  
uk/parenting](http://www.sheffield.gov.uk/parenting)*

### Clifford All Saints School

**Sat 9th July** **Summer  
Fair.** Ringinglow Road  
site. 11 - 2pm.



### St Andrew's Church

Psalter Lane

**Sat 2nd July** 2.30-5pm **Garden  
Party** with stalls with cakes, books, and  
plants. Free light refreshments. This will  
be an occasion to say farewell to the  
minister, Gareth Jones who is finishing his  
appointment here with his wife Jean.



Bannerdale Osteopaths

"Really very good for my injury.  
Perfect recovery program and it  
works for me. Pooja is a wealth of  
knowledge and really pinpoints  
the areas that need work during  
each visit to help me to regain  
fitness."

James, Happy Patient, 2021



Bannerdale Osteopaths, 5 Machon Bank Road  
Nether Edge, Sheffield, S7 1PE

0114 419 0173 | [www.bannerdaleosteopaths.com](http://www.bannerdaleosteopaths.com)