



EDGE

Nether Edge Neighbourhood Newsletter
December 2021/January 2022

£1.50 or free to subscribers

**Vaccinating
Badgers**

**Christmas
Puzzles**

**Ammi's
Kitchen**

**What's On
in December**



www.netheredge.org.uk



The Nether Edge Neighbourhood Group was set up in 1973 with the following aims:

To improve the conditions of life especially of those living or working in the areas of Brincliffe, Nether Edge and Sharrow in Sheffield, without distinction of sex or race, or of political, religious or other opinions, by associating with local authorities, voluntary organisations and residents in a common effort to advance our education, to improve the environment and to provide facilities in the interest of social welfare for recreation and leisure time activities.

Company limited by guarantee
No. 07414080

Registered charity no 1139239

**Individual views expressed
are not necessarily those
of the group**

EDGE DEC 2021/JAN 2022

This issue of EDGE was edited by EDGE Editorial Board

Design & artwork: Stephen Houfe (stephenhoufe@gmail.com)

If you want to contribute to the February edition, please contact the EDGE Editorial Board – nengeditorialboard@gmail.com

NENG Committee Members

* indicates Trustee / Director

* **Ken Lambert** (Chair, Company Secretary & Membership Secretary)
32 Thornsett Rd S7 1NB. 07518 118789 ken.lambert227@gmail.com

* **Mazhar Hussain** (Vice Chair)

* **Howard Fry** (Secretary & Market) 20 Chelsea Road S11 8BR
howard.fry@icloud.com

David O'Connell (Acting Treasurer) 9 Cherry Tree Drive S11 9AE
nengtreasurer@gmail.com

Tayab Fayaz (Accountant)

* **Richard Taylor** (Festival, netheredgefestival@gmail.com)

* **David Pierce** (Market & EDGE Editorial Board)

* **Nicky Erlen** (EDGE Editorial Board)

Helen Willows (Planning)

John Austin (History Group)

Ruth Bernard (EDGE Editorial Board)

Kevin Hickey (EDGE Editorial Board)

Pat Rogers, Minutes Secretary

Rosalind Watchorn

Kate West

Kevin Bonnet

To contact
individual members
of the committee or for
contact details of the various
sub-groups, please go to the
NENG website :
www.netheredge.org.uk/

Nether Edge Neighbourhood Group Application for Membership/renewal

I wish to join / continue to support* the Nether Edge Neighbourhood Group (NENG) and receive the 'EDGE' magazine by hand delivery / by email* and enclose / have sent* my annual subscription of £

**Please delete as appropriate*

Name

Address

Postcode

Tel

Email

- Your contact details will only be used in connection with your EDGE subscriptions or NENG membership.
- The annual subscription for EDGE is £10 per household, commencing on 1st April each year. Any additional donation to the work of NENG is welcomed.
- Subscribers living outside our distribution area will only receive electronic copies of EDGE, or you can choose to receive EDGE by email by selecting this method above.

Cheques should be made payable to **NENG**, but please bear in mind that everyone in NENG is a volunteer, so we would far prefer to receive payment by Standing Order or by bank transfer (Sort code 30-97-51 A/C 36208368 NENG), as this greatly reduces the administration burden on both your local EDGE distributor and on NENG itself. Copies of a Standing order form (you can alternatively set one up online) to send to your Bank are available from ken.lambert227@gmail.com whom you should advise when you have set up a standing order or made a bank transfer so that records can be updated.

Signature

Date

As a local resident/ supporter of NENG, I also wish to become a full Member of NENG, a company limited by guarantee, which entitles me to full voting rights at the AGM, receive regular copies of EDGE and fully participate in its activities. In the unlikely event that the Company has to be wound up, I agree to pay the sum of £1 towards its debts if asked to do so. I understand this liability will continue for one year after I cease to be a member of the company.

PLEASE NOTE: Should you prefer **not** to become a full member of NENG you still can be just an EDGE subscriber by deleting the section in italics above. This entitles you to receive copies of EDGE but no entitlement to vote. The annual subscription is the same.

EDGE EDITORIAL

EDGE Editorial Board

As we put together this edition of EDGE for the festive season the Editorial Board has been impressed by the diversity of topics that interest the residents of Nether Edge and impact upon them. Our contributors have reflected on the past, the present and, most importantly, have been planning a whole range of initiatives and projects for the future. Our community cares for and values the local environment and we can all help to improve it. There are individuals who are working very hard to do just that. There are opportunities in the coming year to become involved in helping and supporting a number of initiatives, whether volunteering to support young people, projects to improve the environment, or conservation work. We hope you enjoy the fun activities and games we have included in

EDGE and challenge you all to make the delicious stollen and enjoy eating it whilst watching your favourite film.

We say 'farewell' to dear friends of the community who have worked so hard to make Nether Edge a better place, and extend a very warm welcome to new members to the community.

WE WISH
YOU ALL
PEACE, GOOD
HEALTH, AND
CONTENTMENT
IN 2022

EDITORIAL BOARD

CONTENTS

Editorial	3
Ammi's Kitchen	4
Sheffield General Cemetery.....	5
Independent Visitors	6
A Favourite Christmas Film & Book ..	7
Vaccinating Badgers.....	8
Christmas Puzzles	9
Dresdner Stollen.....	12
Farewells.....	13
Sheaf Walk	14
Pop Up Sarni	15
Living Streets	17
What's On.....	19
Santa's Coming	20

Advertising in Edge

Edge has some very loyal advertisers – Sheffield Sustainable Kitchens, Pets at Rest, Kenwood Hall Hotel and Bannerdale Osteopaths – all of whom have been advertising with us for a number of years. By advertising with Edge, they are contributing to the cost of producing Edge, and to other activities that NENG is involved with in the community, such as the Farmer's Market and the upkeep of Brincliffe Edge Woods.

Edge is delivered to over 900 households and 90 businesses in Nether Edge.

If you would like to advertise, please contact us at:
nengeditorialboard@gmail.com

Charges are as follows:

eighth page: £20.00

quarter page: £40.00

half page: £80.00

Full page: £160

There are reductions for advertising in multiple copies of Edge.

Ammi's Kitchen Sheffield

A new local Social Enterprise run by Family Voice Sheffield

The Co-Directors are Janine Dos Remedios, Nasim Begum and Kate West. The project focuses on the fantastic culinary skills of women local to Nether Edge and Sharrow. We are based at Common Ground, on Woodstock Road S7 1HA.

Profits from selling food pay for women to train with us to get their food hygiene certificate and complete a kitchen skills course.

Every fortnight the Ammi's Kitchen Team cooks and sells delicious, authentic curries. Women in the team have learnt how to cook through generations of women in their families and communities. The AK food can be a little different from restaurant food, less anglicised and always cooked by women!



For just £12 you get a set meal of a curry, a side and basmati rice for 2 people. We only take pre-orders, in the following ways:

- PayPal link on Facebook & Instagram @ammiskitchensheffield
- Email ammiskitchensheffield@gmail.com to order and pay by cash or card on pick up

Ammi's Kitchen only delivers to bulk orders of 4 or more (and to local school staff) everyone else picks up their curries at Common Ground. We are slowly growing our enterprise so if you can walk, or pick up for friends, that's eco-friendly and healthy too!

We only take pre-orders so that we have no waste. We are trying different options to make sure our packaging is as environmentally friendly as possible. The set meals are usually vegan. Our focus on the environment is key.

We are obviously very socially aware too. We are often the first service women have approached for support or learning opportunities. One mum has now worked with us for 9 years, she has children in local schools. She has just passed her Food Hygiene

certificate having attended a food course with us at Common Ground.

Now she has found herself some voluntary work in the professional kitchen of a local restaurant - hoping to then get paid work! She continues to come and help the Ammi's Kitchen team on the big Friday cook when she can, as she really enjoys the social aspect as well as the experience. Another newer mum got herself a job as a personal carer after attending our food classes - she is convinced it was because, in the interview, she was able to talk about how to safely prepare food.

The Ammi's Kitchen cooking team take it in turns to cook so that everyone gets a chance and the takeaway set meals have a good variety. The team has been stable for a few months now but a few women will come and go as life directs.

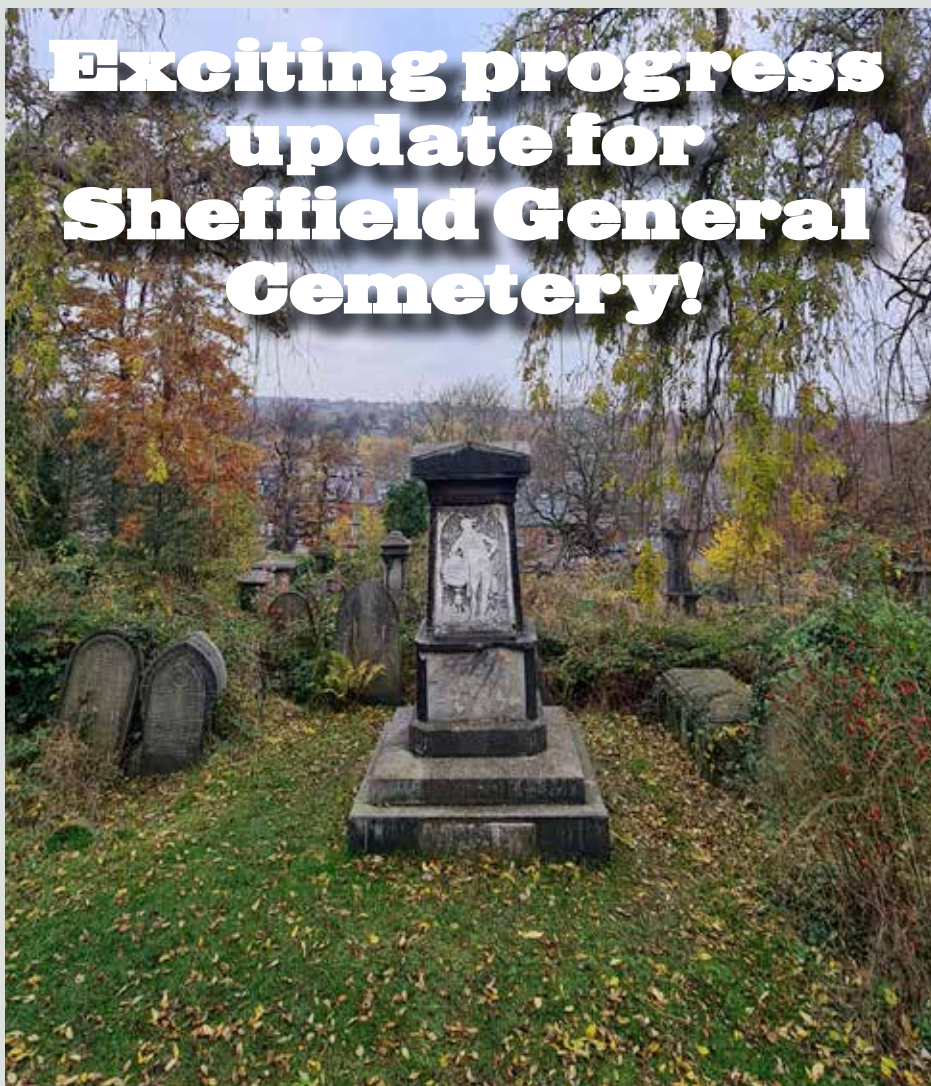
We've had fantastic feedback about our curries so far - "my husband usually doesn't eat veggie but he loved this"

"such depth of flavour" "we loved our takeaway and the whole ethos".

So why not start your weekend with a real treat and take home a tasty curry dinner? Friday nights just got doubly better!



Exciting progress update for Sheffield General Cemetery!



Claire Watts, Senior Project Officer

The long awaited National Lottery Parks for People programme funded conservation and repair works will be starting soon at Sheffield General Cemetery and Heritage Park.

Contractors have been on site since Monday 8th November, making a start on a 15 month programme of work.

Sheffield General Cemetery is considered by Historic England to be in the top 5% of heritage sites in the UK and has a Grade 2* listing. The 185 year old Cemetery was designed as a garden cemetery and built up in terraces from a quarry floor to create the winding hillside walks that we enjoy today. The General Cemetery is currently on

Historic England's Heritage at Risk Register due to the significant levels of structural repair required to conserve the complicated tiers of retaining walls that are largely unseen but intrinsic to the Cemetery's design – some of which have not had significant repair work since being built.

The package of conservation works has been made possible by funding through the Parks for People programme, a combination of Heritage Lottery Fund and Community Lottery Fund and runs along-side the Activity Programme being delivered by project officers Laura and Tracey. In addition to structural repairs, the funding will also provide improvements to accessibility including repairs to worn paths and steps, the addition of handrails and the installation of occasional lighting to facilitate evening events.

The most dramatic change will be to the catacombs, where we will be carefully removing the concrete balustrade – returning the appearance of the catacombs to their original design – but importantly without disturbing burials.

Of course, there will be plenty more work to do in the future – the more we learn about the Cemetery, the more we find there is to discover. This project is one more exciting step on the restoration journey started 30 years ago by the Friends and later Sheffield General Cemetery Trust, and will help to safeguard the structural integrity of the Cemetery for the next 100 years.

For further information, please get in touch with the Council's Parks and Countryside Service on TEL 0114 250 0500 or by email at parksandcountryside@sheffield.gov.uk

NETHER EDGE FAIR

Support local independent makers:
Art & Jewellery; Body & Bath;
Crafts & Clothes; Eco & Charity;
Food & Drink; Garden & Outdoors;
Home & Toys

For Christmas, Birthdays,
Anniversaries, Every Day

FREE Personal Present Shopping Service
available: jlallen1812@gmail.com

<https://www.netheredgefair.com>

(After website costs) every penny goes to charity

EDGE CUTTERS

Support your **local**
barber shop during
the festive season

2 Sheldon Road
Nether Edge, S7 1GW



Volunteer as an Independent Visitor

Do you have time once a month to volunteer as an Independent Visitor?

We are looking for fun, reliable and enthusiastic volunteers from different cultures, backgrounds and experiences to be long term friends for children in care and care leavers.

Independent Visitors are matched with a child or young person and they meet with them once a month, for a minimum of two years, to do a fun activity together. Activities could include going to the cinema, bowling, painting a pot, going to a restaurant, riding a bike or a walk in the park etc.

Independent Visitors are positive adult role models who through their consistent friendship help their child or young person to build self-esteem, confidence and resilience.

"Being an Independent Visitor is great fun, I love planning new activities and trips for my young person. It makes me feel like a kid again. When your young person opens up to you, it feels like you are really making a difference."
Danny, Aged 30



Here's what Lauren Hart, a current Independent Visitor has to say about her experience. She has been matched with her young person for 3 years.

"Volunteering as an independent visitor has been by far one of the best things I have ever done. Not only do we have fun, we are also developing a positive relationship and it means a lot to me to support such an incredible young person."

"The Sheffield Children's Involvement Team are so supportive and generally all round amazing!"

"The matching process is so thorough and I feel like me and the young person are so well suited and have similar interests."

"We get on so well and have so many great experiences; I look forward to our meet ups each month. I am also learning so much about myself and I'm really grateful for this fantastic opportunity."



If you think you could make a difference to the lives of Sheffield young people in care and care leavers, we'd love to hear from you. Please contact iv@sheffield.gov.uk or 0114 2288522 for more information and an application form.

As part of the recruitment process, applicants will be expected to complete an enhanced DBS check and provide two references. Full training is given, activity and travel expenses are covered and support is provided through your assigned Independent Visitor Co-ordinator.



A Favourite Christmas Film & a Favourite Christmas Book

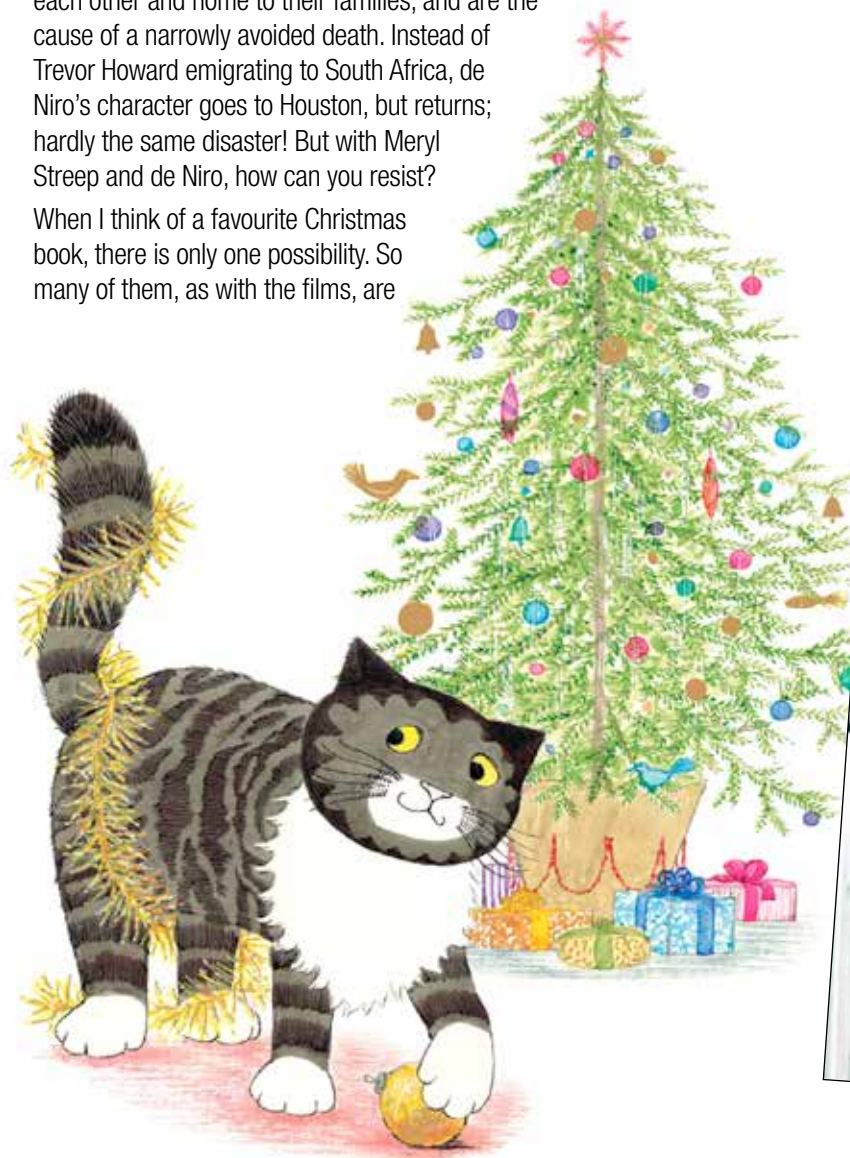
Felicity Skelton

In common with most people, I suspect, I absolutely loathe Christmas shopping. Or rather, I used to, until I started doing it all online. I remember a last-minute dash to Meadowhall one Christmas Eve – horrors. Still makes me shudder. And I think that's one of the reasons why I perversely enjoy an American rom-com, *Falling in Love*, with Robert de Niro and Meryl Streep. It begins with Christmas shopping, in a horribly crowded, bustling New York, when both the main characters go to buy their respective partners a book for Christmas. In Barnes and Noble, the well-known bookshop, which is also terribly busy, their parcels get accidentally switched, and thus begins their connection. Later in the film, there is a repeat Christmas shopping trip, still the same sweaty crowds, the same cold dankness out on the street, and the overpowering heat in the shop. You can feel it through the screen. There's much more to the film than these two scenes, and it gets relatively complicated, but with a predictable ending, the obligatory near-miss, the chase scene, it's not for everyone.

The rest of the film owes a lot to *Brief Encounter*, although, being American, the ending is more upbeat. For example, as in *Brief Encounter*, trains are important, carrying the characters away from each other and home to their families, and are the cause of a narrowly avoided death. Instead of Trevor Howard emigrating to South Africa, de Niro's character goes to Houston, but returns; hardly the same disaster! But with Meryl Streep and de Niro, how can you resist?

When I think of a favourite Christmas book, there is only one possibility. So many of them, as with the films, are

made to order, to fill a stocking, and lose any attraction by Boxing Day. But *Mog's Christmas* – ah! Now there's a book you can read all the year round, and repeatedly. All the *Mog* books are wonderful, from *Mog the Forgetful Cat*, probably my favourite, through to *Goodbye Mog*, even the thought of which makes me cry. Judith Kerr wrote them for little children, but they are so true to life, and so funny and sad, that they work at any age. Or maybe I'm just an old fool! My daughter has wisely kept the books with her in her own home, so I can't revisit it now, but the fact that it is so vivid in my memory says a lot. *Mog's Christmas*, at seeing 'a tree walking!' He runs for safety up onto the roof, in the snow, and while Kerr draws the family in their cosy home, unwrapping presents, enjoying the warmth and a very typical family Christmas, poor *Mog* is stuck outside in the cold on the roof. Maybe it only works if you're a cat lover. I hope not, because there are life lessons for everyone.



Vaccinating Badgers on the Eastern Moors

Ken Lambert

I am a volunteer with the Eastern Moors Partnership (a partnership between the RSPB and National Trust), doing bird counts and looking after the 54 nest boxes in the Surprise View woods. The volunteers were asked if they would like to work with the Derbyshire Wildlife Trust on the vaccination of badgers. The Wildlife Trust has the largest badger vaccination programme in the country, which is against bovine TB (not Covid 19). My friend Ian and I incautiously agreed to take part and so we were invited to a briefing at Barbrook Cottage, the base for the Eastern Moors Partnership, with the rather ominous requirement to “bring a spade”. It is quite a convoluted procedure, so:-

Step 1 – find the badger setts. The Wildlife Trust had done a survey in March, locating 35 setts in the Eastern Moors, though not all were active. Unfortunately by August, when we started the task, the bracken was seven feet high (way above my head), so it took about an hour of ploughing through this to locate our two setts. One was a very large and old sett, the other smaller and well hidden. They both turned out to be about 100 metres from a well trodden, bracken-free path !

Step 2 – entice the badgers with peanuts. This involved using the spades to go down one spade depth, lob in some peanuts (non salted of course) and tread down the earth. About twenty spades’ worth at the big sett. We also set up a camera near one of the many sett entrances.

Next – after having a day off, we returned to a scene of devastation as the badgers had dug up and eaten all the peanuts and generally

scattered soil and rocks around the place. Repeat for two more days to get the badgers really interested. In the photo one can just see deep badger scrapings plus the tools of the trade – spade, bag of peanuts and camera strapped to the tree (shame nobody checked the battery).

Then – lay the traps. We were not available that day and somewhat relieved not to be involved, since each trap weights 10 kilos and 7 of them had to be carried over tricky terrain and expertly placed (5 at the main site and two at the smaller one). The trick then is to put peanuts in an earthenware dish, cover the dish with a heavy stone to keep out squirrels and rodents; two at the front, two in the middle and two at the back. As the cages are a lot longer than one’s arm, placing at the back of the cage required a technique akin to loading a pizza oven – dish and stone on the shovel, push to the back and wiggle the shovel out. What could go wrong? For some reason this task was left to Ian and myself.

Nearly there – prime the traps. Unfortunately, as vaccination work at our two setts was due to be audited by Natural England, the professionals did not want their work to be messed up by enthusiastic but novice amateurs, so we missed this. To try to avoid harming the badgers the traps are primed just before dusk and then the lucky people trained to carry out the vaccination do it at dawn – around 4.30 am. Again, we were not allowed to see this procedure, but were sent photos and videos. The traps are primed on successive days, but day 2 was less successful than the first day, when five badgers were vaccinated, including two cubs caught in the same trap.



According to the Wildlife Trust people, cubs born from vaccinated adult badgers inherit immunity.

Postscript – having a well-earned beer in the Grouse Inn we found that the landlady was not a fan, since badgers had destroyed her lawn (I blame the moles) and a farmer joined in to say that they ate his lambs. Just goes to show that you can’t please everybody and I do realise that some lawns in Nether Edge have been “done over” by badgers, but all in all a fascinating two weeks.

Further information:

Eastern Moors Partnership: <https://www.visit-eastern-moors.org.uk/>

Derbyshire Wildlife Trust badger campaign: <https://www.derbyshirewildlifetrust.org.uk/supportcampaign/badger-vaccination>



Christmas Picture Puzzler



Pair up the pictures to give 10 names on a seasonal theme. Tip - jot down under each picture what you think the image represents; and then look for an image you can pair it with to give something commonly seen at this time of year. 20 pictures 10 answers!

Answers on page 15



Union Hotel Monday Night Quiz

If you have enjoyed completing the Christmas picture quiz, come along to the Union Hotel on a Monday evening to take part in the weekly pub quiz. All welcome and it is great fun!

Where is this?



Where can this cute topper be found?



Where does this bear live now?

Who are these waxworks?

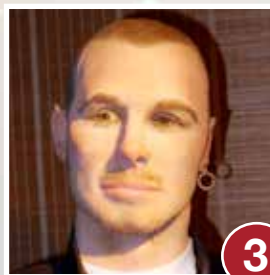
Spitting Image: In 2012, Louis Tussaud's House of Wax (regarded as the worst waxworks museum in the world) closed. Can you identify these images from it's collection?



1



2



3



4



5



6



7



8



9



10

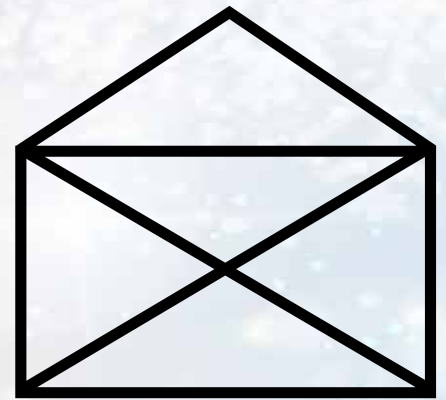


11

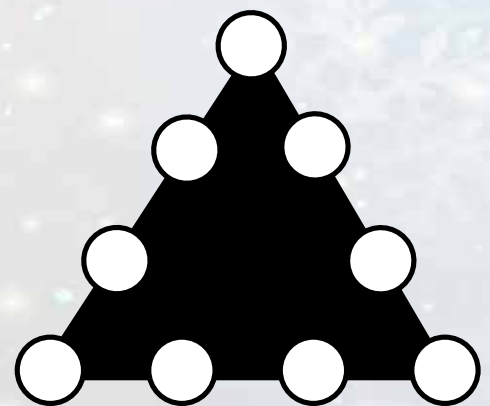


12

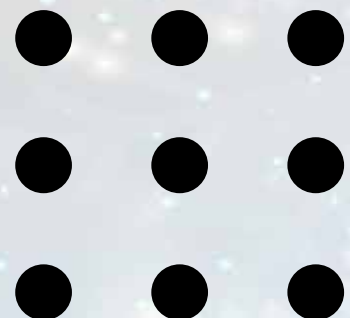
Puzzles



Can you draw this envelope without lifting the pencil off the paper, or going over any line twice.



Place numbers 1 to 9 in the circles below so that each side of the triangle adds up to 17



Can you connect all nine points with only four straight lines without going through the same point twice or lifting the pencil off the paper.



Bismarck

Card game for three players

Graham Nield

Otto von Bismarck (1815-1898) was the chief architect of the German Empire and the reason for the choice of name remains a mystery. The game was probably an adaption of Whist for three when a fourth was missing, possibly in military circles.

Cards Use a standard 52 card pack, with cards ranking in their usual order

A K Q J 10 9 8 7 6 5 4 3 2.

Game A game consists of 12 deals. Each player in turn deals four times in succession. The deal then passes to the previous dealer's left-hand neighbour.

Deal The dealer distributes 16 cards to each player, takes the last four themselves, and discards, by substitution, any four unwanted cards face down before the opening lead is made by the player at their left.

Each of the four deals is a different game, as follows:

First deal The aim is to win tricks, playing at no trump. The dealer scores 1 point for each trick they win above eight tricks, and each opponent scores 1 point for each trick they take above four.

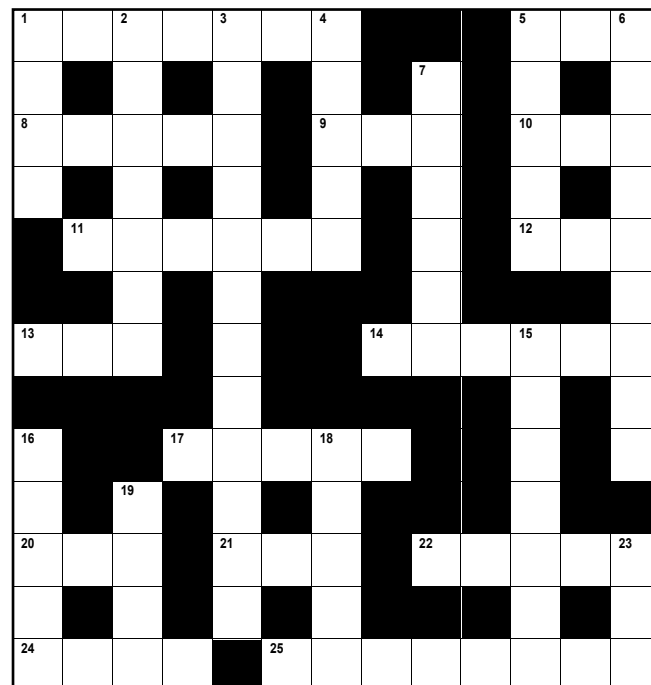
Second deal The aim is to win tricks, with a trump suit selected at random (such as by turning the last card, or cutting another pack). Score as above.

Third deal The aim is to win tricks, with a trump suit declared by the dealer after examining his hand but before the first card is led. Score as above.

Fourth deal The aim is to lose tricks, playing at no trump. The dealer scores 4 points less than the number of tricks they took, and each opponent scores 6 points less the number taken by themselves.

The winner is the player with the highest score at the end of the game.

Sprat's Christmas Crossword



Across

1. Illegal seizures of aircraft, ships or vehicles (7)
5. College servant at Oxford or Cambridge (3)
8. Prism which produces plane polarised light (5)
9. Short melodious tune (3)
10. Make a mistake (3)
11. Nine* (6)
12. Head of corn (3)
13. Island or lettuce (3)
14. Device protecting from blows or missiles (6)
17. Five* (5)
20. Mischievous sprite (3)
21. Small round mark (3)
22. Ten* (5)
24. Product of acid and base (5)
25. Twelve* (8)

Down

1. Three* (4)
2. Wild dogs (7)
3. Four* (7,5)
4. Seven* (5)
5. Six* (5)
6. One* (9)
7. Three* (6)
15. Attacked by the Ambrosia beetle (3,4)
16. Eight* (5)
18. American nickname for an alligator (5)
19. Semi-transparent gemstone, sometimes considered unlucky (4)
23. Distress signal (1,1,1)

All answers on page 15

Dresdner Stollen

Recipe provided by Nicole Erlen



One of my clearest memories as a very young child living in Lincolnshire was the arrival of the postman just before Christmas clutching the very loose contents of what had clearly started off as an ineptly wrapped parcel. The first impression was of course of the kindness of the postman and of all those through whose hands the parcel had passed who were prepared to keep this bundle together with its very thin, lovely Christmas wrapping paper enveloping, strangely shaped contents loosely tied with ribbon. The second was of the delicious aroma which emanated from the doorstep. Lebkuchen, Pfefferkuchen, Zimtsterne and, of course, Stollen. All containing spices rarely encountered in the corner shops of 1950s Britain. Then there were the exotic postage stamps and severe imprints from the seals of various

customs officials. Finally, there were the contents. Not just the food, which would inevitably include marzipan from Lubeck, but also gifts for my parents and for me. The presents for me became less age appropriate over the years as my German

grandmother, who sent the parcel, only saw me rarely and probably had little idea of what was suitable. She was a Silesian escapee from a Russian prison camp, and thus a refugee, and as such had been housed in the town in Bavaria where the Steiff factory was situated – you may have heard of the famous Steiff bears. The parcel would always include a small Steiff animal – always a second as they were very expensive (my grandmother being unable to claim a pension at this stage as she had been unable to prove that my grandfather had been killed as a serving

soldier on the Russian front), so always slightly misshapen in some way. Although far too old for cuddly toys, I was entranced.

My grandmother was a marvellous baker and on her very rare and brief trips to England, usually on her return from visiting my aunt who had married an American serviceman, she would love to get into the kitchen and bake the kind of yeast- dough cakes that we do not have in this country – Bienenstich, Streusel Kuchen and, of course, Stollen. My grandmother never used scales and when my mother asked her for the quantities of each ingredient she would reply: 'Ein Bissel' (a little bit). Not much help. So, it was many years later that a friend with a similar background to mine provided the following recipe which is the closest I have found to the original I knew as a child. It contains none of the fancy ingredients that are included in the now ubiquitous supermarket Stollen, but I do like to slip in a little roll of white marzipan in the middle before the second proving.



RECIPE Dresdner Stollen

1000 g strong flour

80 g fresh yeast (or 4 tsp dried)

¼ litre milk

500 g butter (you can reduce this a bit if you are worried about your cholesterol levels)

150 g sugar

1 tsp salt

grated rind of two lemons

600 g raisins

100 g almonds coarsely chopped

100 g hazelnuts coarsely chopped

150 g candied peel finely chopped

8 cl rum (or other spirit)

Melted butter and icing sugar (preferably infused with a vanilla pod)

Keep all the ingredients at the same temperature. Soak the fruit and nuts in the rum. Warm the milk to blood temperature. If using fresh yeast put yeast in the milk with some sugar and leave to froth. Rub the butter into the flour. Add the rest of the sugar, salt and lemon rind to the rubbed in mixture. Carefully pour in the warmed milk into the flour mixture to create a soft but not overly sticky dough. The amount of liquid you use will vary. Knead for about ten minutes. Leave in a warm place until doubled in size. Then put the dough on a floured board, roll it out and press in some of the fruit. Turn, roll out and press in more fruit. Repeat this until all the fruit has been incorporated into the dough. Leave to relax for about half an hour.

Divide the mixture into the number of stollen you wish to make. You should get 4 from this quantity. Roll out each piece into a circle. If you want to add marzipan, do this now. Fold one side of the dough towards the middle, then fold the other side of the dough towards the middle and over the top of the first side to make the traditional stollen shape. Leave to rise for another 20 minutes. Bake at a high temperature – about 200 degrees – it will quickly brown so keep an eye on it. Then reduce the heat to make sure that the centre is fully cooked – test by tapping the stollen which will sound hollow when ready to take out of the oven. Once out of the oven brush with melted butter and thickly dust with vanilla infused icing sugar. It will keep well if tightly wrapped, but I prefer to freeze mine once cool.

FAREWELLS

David Pierce MBE

The cruise ships have returned to Liverpool and this time they are giants. Hundreds of cruise ships have visited Liverpool bringing over a million passengers and crew. When the three Queens visited together recently over a million people lined the banks of both sides of the Mersey. When the cruise ships set sail again Liverpoolians gather to wave farewell and sing The Leaving of Liverpool. Cruise ships disembark in the heart of the city, a few footsteps away from the modern, thriving, cosmopolitan place recently chosen by Rough Guide as one of the top three cities in the world to visit. It was not always the case. In the past Liverpool was famous as a place to leave, not one to visit. Between 1830 and 1930 over nine million emigrants sailed out of the River Mersey bound for new lives in the US, Canada and Australia. In the 18th century thousands of less willing people sailed from Liverpool. Liverpool-based vessels alone carried more than 300,000 Africans into slavery. The wealth acquired by the town as a result was substantial. Merchants and many other citizens prospered and the city thrived and grew. The city's links with the sea were established and remain to this day. There can be few families who have not had sea captains, merchant seamen, dockers and a variety of other merchants and ancillary trades featuring in their ancestry. My Uncle Arthur was a dockers' supervisor who worked up and down the seven miles of Liverpool's dockland. He also took an



Admiral Porter Pierce

interest in the history of the family and had somehow become the caretaker of a portrait of our most (only?) famous ancestor. That was Admiral Porter Pierce who was knighted and rose to great fame in the late nineteenth century. He was a renowned singer as well. When I was much younger than I am now I used to stand at the Pier Head and look along the Mersey to its mouth a mile or two away. I could see the open sea beyond and I dreamed of sailing to America and the rest of the world. The furthest I went was to the

Isle of Man. Then, in 1976 I turned my back on the sea and Liverpool and came east, to Sheffield. This was my big farewell.

It was followed by a series of disappointments. A city that needed development, weather that was very different from that enjoyed in the west and a job in a steel works that sorely needed to move into the twentieth century. Oddly, there were welcome similarities between the sea and the local moors but the real sea lay a further seventy miles to the east. So, with some reluctance, we settled in Sheffield and discovered Nether Edge. Twenty-two years followed, first in Oakhill Road and then in the heart of the area, Montgomery Road. The rest is history, as they say, and now we are saying farewell to our lovely and friendly 'village'. There is much we shall miss about Nether Edge but we are not far away and we will not sever our ties. We never imagined that we would live between Tesco's car park and the railway line but we are and there is lots to be pleased about. There are trees all around and footpaths to explore. The River Sheaf is responsible for most of the industrial history in the valley and makes its way through Millhouses Park on its way to deliver its water into the North Sea. The trains join the river on to the city centre and beyond. Fortunately they go the other way too, through Dore and on to Liverpool.



Big Yellow and Beyond: Missing Links of the Sheaf Walk No 2

Between Cutlers Walk below the Sheaf View pub and where it flows below Queens Rd, the River Sheaf is currently an inaccessible mystery. Yet behind the big tin sheds of Big Yellow Storage and Travis Perkins, like the Sleeping Beauty's castle, there is half a kilometer of attractive and fully constructed riverside walk, equipped with paving, railings and street lighting but sealed up at either end and never enjoyed by anyone.



The walk was built by developers Keyline back in 2008 as a planning requirement when they redeveloped an old builders yard. Planners intended it to form part of the long awaited River Sheaf Walk, an off-road cycling and walking trail. Unfortunately the walk, which probably cost at least £50,000, was never connected to the surrounding road network so has remained closed and gradually forgotten. The river here was straightened and canalised in the 1860s to accommodate the Midland Railway, but is still an attractive waterway which includes the Clough Weir equipped with a fish

pass which however is in serious need of clearance. The stone river walls are pock-marked with sand martin or king fisher nesting holes, part of a rich wildlife habitat.



Now a planning application to redevelop the Grahams Plumbers Merchants on Queens Rd has unlocked the possibility of opening this 'lost' riverside path, says the Sheaf and Porter Rivers Trust.

They called on the developers Ackroyd and Abbott and Costa Coffee to revise their proposal to incorporate the missing connecting walk, supported by the Environment Agency, the Sheffield Wildlife Trust and some 70 other objections .

In response the developer has informally agreed to install the missing piece of trail for which they are to be congratulated. However the Trust and others have also asked for some of the existing riverside trees on the site to be retained and suggested that more outdoor seating be located next to the river, possibly on a disused bridge which forms part of the applicants ownership. They have drawn attention to the dangerous condition of the riverside walls in need of repair and invited Costa to join the Trust's voluntary River

Stewardship partnership which aims to look after the channel for bio-diversity and flood management.

They have so far had no response on these important issues.

The Trust is also having positive discussions with Big Yellow and Travis Perkins to secure their co-operation in finally opening up their riverside and connecting it upstream. Watch this space!



To view the Costa proposal and public comments and to add your support go to [Sheffield.gov.uk /planning and development/planning applications/ 21/0385/FUL](https://www.sheffield.gov.uk/planning-and-development/planning-applications/21/0385/FUL)



Bannerdale Osteopaths

"Really very good for my injury. Perfect recovery program and it works for me. Pooja is a wealth of knowledge and really pinpoints the areas that need work during each visit to help me to regain fitness."

James, Happy Patient, 2021



Bannerdale Osteopaths, 5 Machon Bank Road
Nether Edge, Sheffield, S7 1PE

0114 419 0173 | www.bannerdaleosteopaths.com

Pop Up Sarni Takeaway

Adam Heyes

I've long dreamt of running my own café, exploring various paths with trepidation throughout my earlier career. Aside from singing, it's the only job I ever felt true passion for. In this dream, I live in a little flat above my shop and I come downstairs each morning to open up, like some romantic Meg Ryan comedy from the 90's. Fortuitously, this dream came true in 2020 and I feel content within myself at long last - I'm just where I am meant to be.

I believe in 'manifestation' and feel this story gives weight to the concept. Whenever we want something fiercely enough, the Universe wants it for us too and aligns us with the opportunities to help us attain our goals - even if we don't realise it in the moment.

Before 'Pop Up Sarni' came into fruition, I worked at another café though the arrival of the Pandemic brought an end to my time there. Like countless others, I found myself on the precipice of unemployment and uncertainty, frightened for the future. The unit below my apartment had become vacant and with my long-time friend and neighbour, Katie, we took a chance, not sure if it would work during a lockdown, unsure how long a 'pandemic' might last. The previous owners were friends, so we took over the space though people thought we were crazy...

Jump forward 18 months, I'm sipping ginger tea in the sunshine on the rear terrace we share with "The Gin Bar" as I write this and reflect on recent times that have been uncertain and unfair to many local businesses. Luckily, with hard work and relentless dreaming (not forgetting our fantastic customers and lovely locals) "Pop Up Sarni" navigated safely through 2020/2021 and we're excited as another Christmas fast approaches!

Our Winter Menu has loads of tasty Christmas offerings, from fresh homemade soups, sarni's and festive daily specials, all day breakfasts



(meaty, veggie, vegan or gluten free options) tea and coffee and a big focus on flavoured hot chocolates! We're selling real pine Christmas Trees again too as they were so popular last year!

I've built a strong online social media presence and we get such lovely feedback from all directions; it is both heart-warming and humbling. To cheer people up and make them happy through difficult times has been reward enough but knowing the community has really taken us to their hearts and shown such support is a blessing we really had not anticipated. I'm grateful to everyone who helped us get here. Our story is only one of many recent local success stories but it is proof that hard work pays off and manifesting dreams can work. When you want something badly enough it can be so!

I run my other business "Heyes Days" (hand painted plant pots) from the café and they're available for purchase - perfect prezzies for Christmas! There's also space for local artists to display/sell their work so if you're interested in featuring work/renting space please get in touch.

As for the future? We have exciting ideas in the pipeline! We're excited to keep doing what we're doing in such a thriving area. Abbeydale Road is an exciting place to trade again, with so many wonderful businesses around us. I'm excited to grow and continue working alongside them.

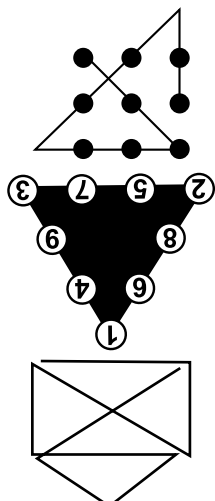
Follow our Facebook ('Pop Up Sarni Takeaway') and Instagram ('popupsarni') for information about our menu and regular acoustic/poetry nights. We also provide outside catering and would love to cater your event!

Thank you, from the bottom of our coffee cups.

Pop Up Sarni, 448 Abbeydale Road, Sheffield S7 1FR
Tel: 01144538963

Answers to Christmas Puzzles

There may be other solutions to these puzzles



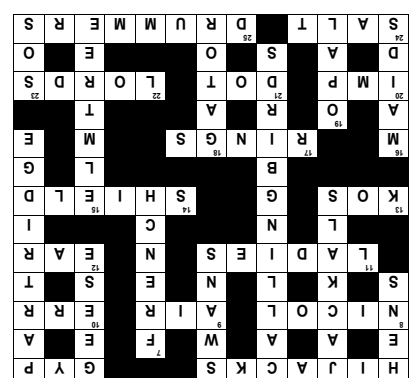
1. Prince Charles
2. Elton John
3. David Beckham
4. Tom Jones
5. Gary Lineker
6. Sarah Ferguson
7. Tony Blair
8. Cliff Richard
9. Sean Connery
10. Chris Tarrant
11. George Best
12. Shirley Bassey

MAXWORKS

- PICTURE PAIRS**
- A crack in the floor and the cast of the TV programme
ER - CRACKER
- Two Queens and a cartoon depicting speech - QUEEN'S
SPEECH
- Dec Donnelly and Cicero giving an oration - DECORATION
- A fairy and some bright lights - FAIRY LIGHTS
- A set of stocks (in Eyam actually) and a King - STOCKING
- Ruud Van Nistroy and a picture of Universal Soldier
Dolph Lundgren - RUDOLPH
- A shy deer and heavy rain - REINDEER
- A cartoon depicting a party and a nice red bowler hat -
PARTY HAT
- A logo for a company called Mizzle and a big toe -
MISTLETOE
- A climber on a hang from a rock and a picture of the cow
Jumping OVER the moon - HANGOVER

PICTURE PAIRS

WHERE IS THIS?
POSTBOX: Kenwood Road; BEAR: In the
window of Spencers Estate Sagent, Ecclesall Rd





LAURA ASHLEY

THE TEA ROOM



Treat yourself this Winter

BOOK NOW FOR THIS AMAZING OFFER - 25% discount

Available between 3rd January 2022 and 28th February 2022

for all Netheredge residents

This offer is available on Afternoon Tea, Brunch and Tea and Coffee too if you just fancy popping in for a hot drink! Our opening days will be Saturday - Wednesday 12pm-4pm.



KENWOOD HALL HOTEL

Kenwood Road, Sheffield,
South Yorkshire S7 1NQ

t: 0114 250 5619

e: thetearoom@kenwoodhall.co.uk
www.kenwoodhall.co.uk



**Sheffield
Sustainable
Kitchens**

Award-Winning

Quite simply, thoughtful
design, quality materials, made
to measure and built to last.

Let us help you create your
perfect kitchen.

ssk.uk.com 0114 250 9078





Helen B and Jenny C

Hunter's Bar Living Streets (HBLS) is a campaign group formed by parents wanting to see walking journeys made safer and nicer for all. The lack of crossings and pavements blocked by parked cars make active travel dangerous and many families have had near misses trying to get to local schools and amenities on foot.

HBLS would like to see the following:

- Pavements that are wide enough to safely use them, including people with buggies and mobility scooters.
- More safe crossings.
- Pavements and dropped kerbs that are not blocked by parked cars.
- Side-road zebra crossings.
- Redesign of flared junctions which facilitate drivers turning at speed (Osborne Road-Psalter Lane, Montgomery Road-Machon Bank).
- Single-crossing pedestrian crossings (not staggered).
- Enforcement of double yellow line parking, obstructive parking and engine idling.

Basically, there are now too many cars for roads that were not designed for them. Cars are also much bigger nowadays so they don't fit into allocated parking bays or on residential streets. Some drivers therefore choose to use the pavement or double-yellow-line zones instead. Others pull onto pavements because there are no parking spaces available at their destination and they don't want to block car traffic flow. This is not acceptable because it forces pedestrians into the roadway, putting them in danger. Pavements are for pedestrians.

Hunter's Bar roundabout is especially pedestrian-unfriendly. Many drivers block the crossing when the green man is showing. There have been accidents where people haven't realised that the green man does not mean it is safe to cross the entire road. It's also horribly exposed for pedestrians stranded on the islands, sandwiched between moving traffic and subjected to high levels of health-damaging fumes. During rush hours many people are crammed onto the islands, including children with bikes, buggies and scooters.

Walking and cycling around local neighbourhoods often feels like a struggle and can be off-putting. Many local people are trying to reduce their car use and want to be part of the solution, rather than adding to the traffic congestion. It should not be difficult, dangerous or stressful for people to do the right thing, both in terms of personal health and

the environment. We need to address these safety issues to make active travel a more appealing option compared with using the car, as well as recognising that improvements to public transport are also necessary for many residents to be able to reduce their car use.

Sheffield is now lagging behind other major cities in it's approach to active travel. It is perhaps no coincidence that in 2019, more pedestrians were killed or seriously injured in South Yorkshire (per head of population) than anywhere in the UK other than Lancashire (DfT, STATS19 data). HBLS gives all pedestrians a voice.

If you would like to hear more or join us, please email huntersbargroup@livingstreets.org.uk or follow us on Twitter @LivingStreetsHB



Pets at Rest vet home visits

 [pets at rest veterinary care](#)
 www.petsatrestvet.com
 07866243673
 petsatrestvet@gmail.com

final farewells in familiar places

COME FOR COFFEE AND CAKE

**WE ARE
MACMILLAN.
CANCER SUPPORT**

FUNDRAISING EVENT FOR PEOPLE WITH CANCER



MACMILLAN 'CHRISTMAS' COFFEE MORNING

**SUNDAY 5th
DECEMBER**

12.00 - 4.00 PM

**NETHER
EDGE CLUB**

**2 Moncrieffe Road
Nether Edge S7 1HR**

**Support the work of the
Macmillan charity and
see what facilities the
club has to offer**



 **Koru Kids**

**Flexible, reliable
after school
childcare has
landed in Sheffield**

**Search Koru Kids to
find out more**



WHAT'S ON

in and around Nether Edge in December 2021

Every Wednesday

Nether Edge Folk Club meets every Wednesday at 8.30pm. Complete novices and experienced performers are all very welcome at the Nether Edge Bowling Club, Nether Edge Road, Sheffield S7 1RU. For further information see website <https://www.nebc.uk/> or telephone 07763 932778.

Every Monday

Union Hotel, Union Road, Nether Edge. The popular **Monday Night Pub Quiz** starts at 9.0pm. (please note new start time) All welcome.

Every Sunday evening at 9.30pm.

Quiz Night with cash prizes to be won at the Byron House, Nether Edge Road. S7 1RU Tel 0114 258 1153.

Wed 1st Dec 8.30-11.00pm.

Trio Dhere from Belgium play mesmerising instrumental music which includes a virtuoso hurdy gurdy player will be performing at the Nether Edge Bowling club. Tickets from Michelle on 07742627839 or email: tickets@nebc.uk

Wed 1st Dec. 9.00pm

(please note new start time) **Monthly Pop Quiz**, Union Hotel, Union Road, Nether Edge. Get there early to get a seat.

Sun 5th Dec 12.00-4.00pm.

Macmillan Christmas Coffee Morning, a fund-raising event for people with cancer. Come and support the work of the Macmillan charity at the Nether Edge Club, 2 Moncrieffe Road, Nether Edge, S7 1NX.

Sun 5th Dec 11.00am- 3.00pm.

Nether Edge Farmer's Market.

Refreshments, live music, free entertainment, and lots of interesting stalls selling arts, crafts and delicious food and drink. Nether Edge and Glen Road. Our markets have raised over £90,000 for local charities.

Tue 7th and Tue 14th Dec 7.00pm.

Sheffield Carols Singalong... Courtesy of the Nether Edge History group in the Union Hotel, be there early if you want a seat... all Covid permitting.

Fri 3rd Dec 1.00am-4.00pm.

Wreath Making at Sheffield General Cemetery (more info to follow check website) Contact sgct@gencem.org . Tel 0114 268 3486

Sun 5th Dec 2.00pm -3.00pm.

History Walks. Ever wanted to learn more about Sheffield's Victorian history? Why not start with a fascinating guided tour of the Grade II listed historic cemetery. Meet the residents who shaped Sheffield's history, from Mark Firth and Samuel Holbery to the Cole Brother and George Bassett, and many more. Contact sgct@gencem.org for updated information. Tel 0114 268 3486

Mon 6th Dec 7. 00pm.

Sheffield Bach Choir will be performing Handel's Messiah at Sheffield Cathedral with the National Festival Orchestra. Tickets £16 (£13 concessions) available from choir members, by post with a SAE to 3 Tapton Mews Sheffield S10 5EA, from Sheffield Cathedral shop, on the door and online from www.wegotickets.com

Fri 10th Dec 7.00pm.

Gregory S. Davies a wonderfully talented singer songwriter will be performing with fine musician friends, The Wicker Chairs at Café#9 S7 1RU. This is sure to be fabulous evening. Tickets £11 from WeGotTickets which includes BYO/corkage fee.

Sat 11th Dec 11.00am-3.00pm.

Craft Christmas Pop up market with 8 independent makers. Help raise money for two Sheffield Charities, Mums United and Sheffield City of Sanctuary. Free entry, charity raffle, festive refreshments. Jewellery, wood craft, linoprint, clothing, flowers, ceramics, macrame and paper craft. 639a Abbeydale Road, Sheffield S7 1TB

Mon 13th-18th Dec 7.30pm.

Mother Christmas a comedy by David Lewis is presented by the Lantern Theatre and the Guilde Players. Christmas past, Christmas present and Christmas future in the hands of a dysfunctional family intent on throwing annual fancy dress parties on Christmas Eve. Box Office lanterntheatre.org.uk. Tel 0333 666 3366.

Tue 14th Dec 7.00pm-9.00pm.

Team Theo's Glow Run 2021, a fundraising 5km run, event by Sheffield Children's Hospital NHS and Charity at Endcliffe Park. For more information and tickets: events.tchc.org.uk

Thur 16th Dec 7.00pm.

Arhai consist of composers Jovana Backovic (vocals, electronics) and Adrian Lever (medieval dulcimer, Bulgarian tambural) will be performing at Café#9 S7 1RU. Tickets £13.75 from WeGotTickets.

BEGIN YOUR CHRISTMAS SEASON WITH ESCAFELD CHORALE

Conductor: Nigel Russell

Organist: Tom Crathorne

TUESDAY 14th DECEMBER

**ST ANDREWS CHURCH
PSALTER LANE, 7.30pm**

Tickets £10 (£8 concessions, £4 Students, accompanied Under 16s Free). Pay on the door, in advance from choir members, or phone 07383 007 429.

In these difficult times of Covid, our Christmas concerts were cancelled last year and in fact Escafeld did not meet for 18 months. We have met since September to sing again with a strict risk assessment in place, though some members still do not feel safe enough to return just yet. We are now hoping to bring some Christmas cheer to an audience once more, though with reduced numbers. We will be following the church's Risk assessment and to keep us all as safe as possible, there will be no interval or wine or mince pies this year.

Do come along and enjoy singing some carols with us and hear 'The Christmas Story in Words and Music'

We will also be singing carols in Orchard Square on Sat 18th December, 11am to 12pm, collecting for St Luke's Hospice

www.escafeldchorale.org.uk

NETHER EDGE FARMERS' MARKET

SUNDAY
5th DECEMBER '21
11AM-3PM

STALLS
CHRISTMAS TREATS!
MINCE PIES
PUDDINGS
REFRESHMENTS
LIVE MUSIC
GIFTS!
FREE ENTERTAINMENT!

Nether Edge Road & Glen Road, Sheffield S7 1RU
www.netheredge.org.uk

Our markets have raised over £90,000 for local charities since 2008 - Thanks Everyone!

"Reindeers & Mince Pies" by Victoria @Neowatercolour.com

SANTA'S COMING TO NETHER EDGE

David Pierce

Here's a message for all the boys and girls as well as their mums and dads and their grandparents. We are sad to tell you that Father Christmas will not be in his grotto this year. All the elves who have erected and decorated the grotto in the bowling green for the last twelve years are unable to do the same this year.

There is good news though. A post box especially for children to post their letters to Santa will be on the wall outside Wickwire from December 1st until Christmas Eve. There will be just enough time to deliver all the letters to the North Pole where Santa will be preparing his sleigh and trying his best to encourage Rudolph to lead his reindeer friends on his Christmas journey. Rudolph can sometimes be very grumpy (and a bit lazy) unless he has lots of carrots to eat. So don't forget to leave at least one carrot for him on Christmas Eve children, then all will be well.

Father Christmas may also find time to visit Wickwire to see how many letters are in the letterbox and to talk to any children he finds there.

MERRY CHRISTMAS TO ONE AND ALL

Photo: KamranAydinov - www.freeepik.com

