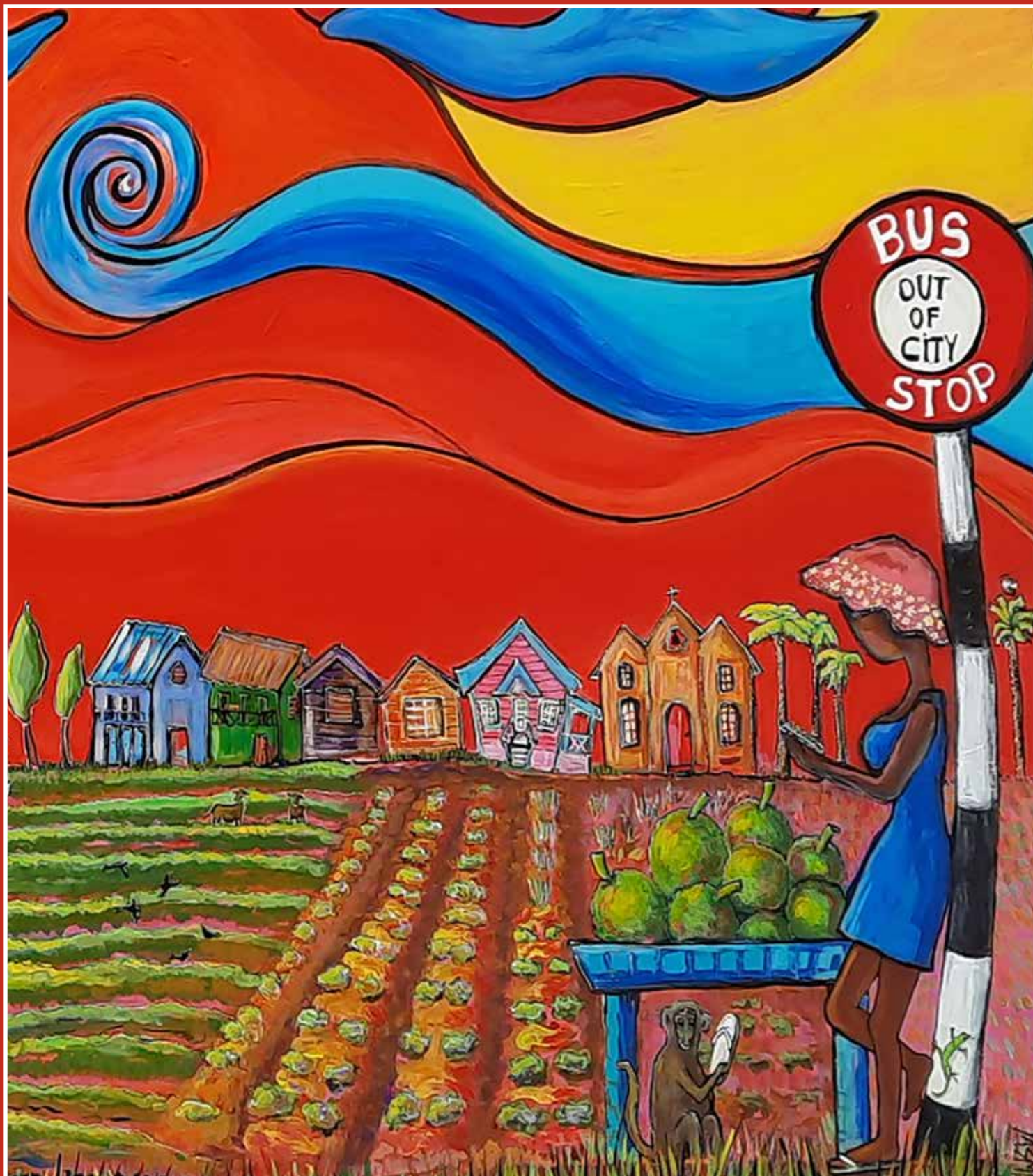




# EDGE

**Nether Edge Neighbourhood Newsletter**  
April 2023



[www.netheredge.org.uk](http://www.netheredge.org.uk)





The Nether Edge Neighbourhood Group was set up in 1973 with the following aims:

To improve the conditions of life especially of those living or working in the areas of Brincliffe, Nether Edge and Sharrow in Sheffield, without distinction of sex or race, or of political, religious or other opinions, by associating with local authorities, voluntary organisations and residents in a common effort to advance our education, to improve the environment and to provide facilities in the interest of social welfare for recreation and leisure time activities.

Company limited by guarantee No. 07414080.  
Registered charity no 1139239

**Individual views expressed are not necessarily those of the group**

## NENG Committee Members

*\* indicates Trustee / Director*

- \* **Ken Lambert** (Chair, Company Secretary & Membership Secretary) 32 Thornsett Rd S7 1NB.  
07518 118789 ken.lambert227@gmail.com
- Ruth Bernard** (Vice Chair & EDGE Editorial Board)
- \* **Howard Fry** (Secretary & Market) 20 Chelsea Road  
S11 8BR. howard.fry@icloud.com
- Pat Rogers** (Minutes Secretary & EDGE Editorial Board)
- \* **Richard Taylor** (Treasurer)
- \* **David Pierce** (Market)
- \* **Marion Gerson** (Market)
- Vicky Phillips** (Festival, netheredgefestival@gmail.com)
- Nicky Erlen** (EDGE Editorial Board)
- Helen Willows** (Planning)
- John Austin** (netheredgehistory.org.uk)
- Kevin Hickey** (EDGE Editorial Board)
- Stephen Houfe** (EDGE Editorial Board)
- Rosalind Watchorn**
- Kate West** (Family Voice)
- Kevin Bonnett**
- Terry Scully** (Finance Officer  
nengtreasurer@gmail.com)

To contact individual members of the committee or for contact details of the various sub-groups, please go to the NENG website :  
[www.netheredge.org.uk/](http://www.netheredge.org.uk/)

# EDGE APRIL 2023

This issue of EDGE was edited by Richard Taylor

Design & artwork: Stephen Houfe (stephenhoufe@gmail.com)

If you want to contribute to the May edition, please contact the EDGE Editorial Board – [nengeditorialboard@gmail.com](mailto:nengeditorialboard@gmail.com) by 12th April at the latest

## EDITORIAL

### Richard Taylor

Welcome to the April edition of Edge. I hope that you find something of interest be it news or intrigue. Please write in and tell us what you think.

In this issue there are articles on "Change" and in the past two weeks we sure have seen plenty of change in our weather patterns. As I write this editorial we have seen the "Northern Lights" followed by beautiful sunshine and to cap it all a foot of pure white snow.

My camera has been capturing all of this plus more – the encouraging fact that the daffodils are now blossoming means spring is on its way.

It's time for celebration and in May we all look forward to the Coronation of our new King Charles. To mark the occasion make a note of the date for the garden party in the Kenwood Hotel gardens hosted by St. Andrew's Psalter Lane Church.

May I introduce you to Martin Rapier who will be taking over the role of our monthly pollution tubes collector, a job I have carried out for many years.

Enjoy the articles and make sure you support at least one of the many activities advertised in the "What's On" page. The unsung heroes who put this page together are Kevin Hickey and Patricia Rogers and we congratulate them for doing a magnificent job.

Thanks also to the Editorial Board who every month work like a well-oiled machine collating and proof reading the text and to Stephen Houfe who puts it all together.



We always welcome new members, whether you want to catch up with local news, get involved in any of our groups, or just support our work. Membership costs £10 per year and you will receive ten editions of The Edge - the NENG newsletter.

For further details email [ken.lambert227@gmail.com](mailto:ken.lambert227@gmail.com), visit our website [www.netheredge.org.uk](http://www.netheredge.org.uk) or scan this QR code



# NEWS

## Edgecutters

As many of you will be aware, Edgecutters is closing. Alison, the current owner, says there are several reasons why. Rising energy costs are a major factor, of course, but she says the business has never fully recovered from the covid lockdown. More men are working from home, therefore needing less frequent haircuts, and some customers have not returned following the shutdown.

However, all is not lost for her loyal customers as Alison is going mobile: *AliBarber, Traditional Mobile Barbering, specialising in OAPs, anxious children and people with disabilities*.

Tel : 07542 535395 alibarber123@hotmail.co.uk

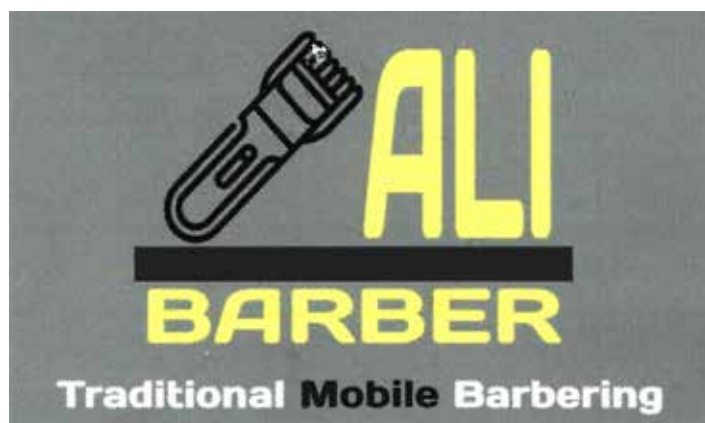


Photo: Kevin Bonnett



## Something Positive

### Lotte on the Edge is no longer selling up!

Yes, you heard it first. . . unless I already told you myself? There will however be some small changes as I am keen to try something new for my business.

As most of you know I am a fashion designer by trade, so while working for Kenzo in Paris in the late nineties and London in the noughties, I never imagined that I'd be making coffee in the heart of Sheffield.

Our Arts and Crafts market called "Union Road Market" will be organised by myself and Faye Waple [customer and now friend] who owns a card and plant brand @aufaye. I will be launching my new "Destination Store" on Saturday 22nd April alongside the market.

What is a Destination Store, you may ask?

Well, my store will still sell its legendary coffees and cakes but in addition there will be rails of clothes [vintage, pre-loved, local and not so local, with independent labels] as well as many accessories. To accommodate this some of the seating will no longer be available.

The good news is that I have changed my mind about selling up and that my little oasis, huddled in the middle of this busy yet leafy suburb will still be with you, spreading its influence of cosy, warm and colourful vibes across Nether Edge,

I look forward to seeing you and thanks for your continued support.

For any further information follow me on Instagram on @lotteontheedge; Facebook: Lotte on the Edge or better still just pop in for a coffee. *Love Lotte X*

## Wanted

...a volunteer to distribute ten copies of EDGE a year to 16 subscribers on Crescent Road. Please contact Ken Lambert (ken.lambert227@gmail.com, 07518 118789) if you can help.



# Changes a-foot

## Topics we talk about at NENG meetings

A personal view by Richard Taylor



**“No change is not an option”, a term I have heard so many times and as we move into the middle part of the 2020's it rings louder and louder.**

**It also comes at a time when whether we like it or not huge changes to our lifestyle are being asked of us. Some of the changes are beyond our control but some we can still have influence on. Here in Nether Edge we seem to be at the forefront.**

### ACTIVE COMMUNITY

The change from cars to cycle and foot are quite rightly prominent in Planners' policies both locally and nationally. Recently Nether Edge has come under the scrutiny of our council and the closure of Archer lane has provoked much discussion in every household. In any change there are inevitably winners and losers and this has created healthy debate in the Community.

I myself have been affected in that I can't easily reach the larger supermarkets in Millhouses by car nor can I easily visit my friends in Carter Knowle. I am conscious of the increased pollution caused by my car and others when standing in traffic on Sheldon

road. On the other hand the benefits of quieter side roads has meant that pedestrians and cyclists can move through our streets more safely.

Those of us who attended the initial meetings with planners were totally frustrated by the some of the plans which were really badly conceived – the thought of an Emergency vehicle having to negotiate Glen Road was scary.

We await final decisions on the effectiveness of the six months trial as deadline dates come and go. Watch this space.

However, at a recent Councillors' and NENG meeting, the idea of a 20mph limit in and around Nether Edge was discussed; a topic not mentioned in the official document. However this does now exist and “The Edge” is actually a 20mph zone. Signage is vague and as far as I am aware only exists half way down Brincliffe Edge and the top of Machon Bank. I am happy to be corrected and more than happy about its existence.

### RED ROUTES

There is a huge debate about Abbeydale Road and Ecclesall Road and the proposed 24 hour bus lanes. The loss of more shops and livelihoods must come into consideration plus

the extra cars needed to be parked in Nether Edge should such a scheme happen. The part of Abbeydale Road that passes through Nether Edge in particular has blossomed recently and it would be a shame to lose this active area.

### BUSES

We all know that the answer is to travel by bus but Sheffield transport systems, unlike our neighbours Nottingham, are in crisis. I recently visited Barbados where the main routes were treated to a constant flow of buses [more comfortable] and 15 seater private taxis [more exciting]. The wait was only 5 minutes and I could go all round the island for £1.50. There must be a way to improve the status quo but please no more diesel engines.

I personally am trying hard to stop using my car but there is a limit to how far I can walk and carry my shopping. The answer you would think would be to hop on a bus but sadly I am limited. Historically buses to and from Nether Edge ran every 20 minutes to the City centre and then on to the Northern General hospital. The beloved Number 10 ran a circuitous route through Nether Edge passing the Hallamshire hospital. Sadly we have lost these facilities.

### CYCLES AND PEDESTRIANS

It is really good to see so many cyclists and pedestrians in and around Nether Edge. Children can reach their schools in Nether Edge and Hunters Bar more easily thanks to excellent local initiatives and well placed

traffic lights. Can I ask that both cyclists and drivers become more tolerant of each other? It would be fantastic to see some excellent cycle tracks passing through our community. Hopefully the long awaited cycle route to and from the City Centre will happen soon, albeit that it will end at the Montgomery Road traffic lights.

### BONFIRES AND COMMUNITY EVENTS

I think we were all upset about losing the Scouts' bonfire in Chelsea Park. NENG have asked local councillors for more clarity about the decision to prevent the bonfire. About a week before the event the organisers were told that 30 toilets had to be provided on site – an impossible ask in such a short time. Let's hope that this year we can all enjoy our much loved event.

### SHOPPING AND THE CITY CENTRE

Am I being old and grumpy but has the City Centre lost its way in the last two years? I don't particularly like shopping at Meadowhall and loved just popping into town for a look around the shops.

I have recently had some great shopping sprees in Chesterfield, which is accessible by bus, car (plenty of parking) or train and a plethora of shops both corporate and individual. Highly recommended.

*There are lots of interesting topics which I am sure all our readers have an opinion on.*

*We would like to hear your views so email NENG and you may get a letter printed in Edge.*

# ALL ARE WELCOME

Richard Pinder, Highfield Trinity Church



*"The moment I walked into Highfield Trinity Church I thought; this is the space. It is light, airy, spacious and welcoming. The exhibition, 'Hope, Art, Sanctuary', was a great success: the people who came not only admired and bought the sculptures and photos, they also admired and took delight in the building."*  
(The Reverend Michael Bayley, Nether Edge)

Through times of lockdown and social distancing members of that Church maintained a sense of community by, amongst other things, exploring faith songs. One that emerged as something of an anthem includes the lines

*Let us build a house where love can safely  
live, where peace and justice meet*

*Where all are named, their songs and visions  
heard and loved.*

Its chorus affirms that in this house "all are welcome, all are welcome" - words that perfectly express how members would like the Church to be seen in the wider community.

The Church – located where London Road meets Abbeydale Road – has been open since 1879, both as a place of worship and as a place where local community groups are welcome to meet, making use of the abundant space within the building.

Those uses are diverse. It is possible, though, to see them as expressions of the value that the Church has come to place on:

- **Creativity:** Long-established users of the space such as Woodseats Musical Theatre Company will shortly be joined by the Resonate Project, part of Good Vibrations, a national charity which "supports people in challenging circumstances through communal music-making" (at Highfield Trinity, Indonesian gamelan music). Artists and art groups (including the Nether Edge Art Group) are using the building for exhibitions.

- **Well-being:** Organisations – including Roshni Asian Women's Resource and ShipShape, – committed to improving well-being in the local community, hold sessions in the Church. Kumon Education runs Saturday Schools that contribute to 'levelling up' in this part of Sheffield, as does Jessa's Joy/Toy Bank.
- **Sanctuary:** Since 2007, Highfield Trinity Methodist Church has been blessed with the company of the Hope of Glory Church, whose origins lie in forced migration from Liberia. And a number of Iranians – mainly young men and women – have come to make Highfield Trinity their spiritual and social home, with a change to the congregation, again best described as a blessing.

'All are welcome' is work in progress. The Church is constantly looking to identify more organisations that share our values, both in the immediate locality of the church and beyond; and to create opportunities for organisations using the building to come together and build solidarity and common purpose.

It may not be sustainable. Like any small enterprise HTC is operating in a difficult context, expecting to lose something like £1,000 per month this year. The Church is, though, committed to offering the welcome, heartened by words of appreciation such as these:

*"Steel City Choristers found Highfield Trinity to be a lovely welcoming space, a beautiful safe space for people to gather to process feelings of lament in the wake of the pandemic. Church people were welcoming and hospitable, and very willing to experiment and try something new. We had a great turn-out for our event and there was a lovely atmosphere."* (Kate Caroe, Chair of Trustees, Steel City Choristers)





# LIFE WITHOUT THE CAR

Mark Doel



Image by upkyak on Freepik

You have woken up on a spring morning in 2033. Outside in the street the only noise comes from birds and people chatting in the streetpark. After breakfast a small car arrives at your door and drives you to your work: usually you enjoy your walk through the streetparks, but it's raining today and you fancy a ride.

You allow yourself a wry smile, thinking of the days not so long ago when these streetparks were choked with half-tonne lumps of metal, just sitting there most of the day and night. Remember those Chelsea tractors trying to squeeze by each other? The occasional 'road rage'? Not to mention the injuries, and the premature deaths caused by emissions. Now you gaze up at the blossoms and look forward to the fruits from these trees come autumn.

With no parked cars and the need for only a single thin track for the electric cars (if there is need for an emergency vehicle it drives on the grass), it has been possible to green pretty much every street with grass, flowers, bushes, trees, and there are swings, slides and all sorts. Remember

that time when you had to have 'pavement' distinct from road? And a half-tonne of metal was allowed to drive at 30mph just inches away from flesh and blood? How did we ever let that happen?!

OK, you are back in the dystopia that we call 2023, and you are telling yourself "Impossible". Well, recently I saw a photograph of a busy London street in 1905, full of horse and carriage and the same street photographed again in 1915, with nothing but motor car. The entire streetscape altered beyond recognition in just a decade: and who in 1905 would have believed that possible?

What we need, as usual, is a course in moral philosophy, as well as the developments in technology that allow safe, driverless electric cars (it's coming). You might be wondering about the philosophy? Basically, it's about concepts of freedom – the difference between 'freedom to' and 'freedom from'. For instance, one person's freedom to go unmasked, and another person's freedom from your viral breathing. A civilised society finds a balance between

these two freedoms: the 'to' is largely about individual rights (sometimes greed and selfishness); the 'from' is largely about collective responsibility (sometimes coercion). Currently, the freedom to drive a huge car, to park on pedestrians' space, etc. is dangerously out of balance with the freedom from asthma, from an early death from car emissions, and from the loss of safe communal space.

The self-drive electric cars of 2033, let's call them dinkies, will be ordered at the click of an electronic button, and most will arrive within five minutes (remember, the streetparks are pretty empty of moving traffic), and will be paid for in the same way that public transport is now. Think of the savings compared to the upkeep of a private car. These dinkies will connect with larger hubs like train stations for longer-distance, 'bulkier' travel. Disabled people will be able to click for suitably adapted dinkies.

As for our experience of neighbourhood life? It will be tranquil, green and healthy.



# A Walk along Abbeydale Road

By Richard Taylor



Walking down Sheldon Road and turning left on to Abbeydale Road opens up a world of activity and interest – is this the new Ecclesall Road I ask? The surge of small independent outlets is surely a move in the right direction.

For many years Mark Doel and I have visited this area asking the local businesses to donate a small raffle prize for the Festival. We have been astounded how welcoming and generous the shops and cafes have been.

One sunny morning I decided to see what this small area of Nether Edge offers but it soon became obvious that things don't come to life until later in the day. For those just wanting to browse the shops you won't be disappointed. **The Bare Alternative** will fill your containers with anything from rolled oats to roasted nuts. Herbarium will offer herbal remedies for all your aches and pains and **Cosmeti Craft** will make you cosmetics such as body butters and bath bombs to order and **Glass Frog and Frippery and Nonsense** will help you choose that all elusive present.

First impressions are favourable and it is great to see some local artwork splashing colourful images on the gable ends. Past Swifties yard of treasures [always worth a look] looking across we see the ever changing Abbeydale Cinema House. [A fabulous building with so much energy]

Coffee calls and the choice is overwhelming -**The Pakistan Café**, **Cole's Corner** and **Jameson's** traditional tea rooms all have their specialities. **Piacere** and **Urbanita** will serve it the Italian way

Returning after dark I am met by a myriad of welcoming lights. In search of an early drink I encounter the first Bar –**The Teller** advertising a bar and restaurant. Two doors along and you enter the world of **Two Thirds** serving beer and German style cuisine.

Over the road **The Barrowboy** beckons where one can sample a local brew in a vibrant atmosphere. **Over the Yardarm** is a glitzy neighbourhood bar and even further along is the **Abbeydale Tap and Swap** - plenty of scope for the discerning drinkers who might have already visited the **Broadfield** and the Gin bar. For those

wanting to drink at home you can pop in to **Turners** and charge your refillable bottles with beers from the world

For those wanting to exercise their taste buds, rather than drinking there is so much choice. It's time to try the culinary delights and believe me there are many to choose from. **Aton**, a Persian restaurant, is a hidden gem serving interesting fare in an elegant atmosphere. Three top class Italian restaurants beckon – **Piacere**, **Urbanita** and **Rosmarino**. All come highly reviewed so take your pick. For those of you fancying something Greek – **Kalimere**, **Meraki** and the **Greek Village** are all excellent in offering traditional Greek fare.

So, there you have it– a Cornucopia of independent shops, cafes and restaurants all within a quarter of a mile of each other and a stone's throw from the heart of Nether Edge.

If I have left anybody or anything out I apologise, but I recommend you give it a try. It's a fun area.



# Nether Edge Bowling Club

## 1867-2023

Richard Taylor



We are coming up to the start of the bowling season and like real troubadours the Nether Edge bowlers will don their shorts and t-shirts and prepare to start the bowling season. We know it will be cold but they are a tough bunch as they have been for 156 years.

Is this year any different? Probably not, but they would like local people to feel part of the Bowling Club Community. So, to share their enthusiasm they are having an Open Day. If you would like to try potting a few balls in the snooker hall or strutting your stuff on the bowling green come along to the Open Day on Sunday 23rd April from 11am.

There will be a friendly Bowling Competition that day – a sort of Pro/Am so if you would like to take part contact the club. All ages welcome. You will be guaranteed a partner with bowling experience. Flat shoes are the only requirement. No charges, just come and have some fun. Likewise experienced snooker players will be on hand to give you a game and offer advice.

You may just want to wander round and have a cup of tea – you will be more than welcome. Guided tours will be available throughout the day.

We are always looking for new keen bowlers and snooker players – our current annual subscription is £170 but as an offer to new members this will be reduced in the first year to £120. This will give you access to unlimited bowling and snooker [small lighting charges apply].

### HISTORICALLY

In 1863 there was a Crown Green Bowling club at the nearby Brincliffe Oakes Hotel. A few of their members purchased the land where the club now stands. Local dignitaries, Councillor Benjamin Staniforth and Edwin Round, called a meeting and local gentlemen kindly offered enough money to start building a one storey clubhouse. We are so glad they did because 156 years later our community still has this fantastic part of our heritage.

Two World wars later there is such a story to tell. Derek Agar and Richard Taylor have become volunteer archivists. Derek will concentrate on the snooker and Richard will be looking at the bowls with the aim to produce a book in early 2024. If anybody has any knowledge or stories of former members or incidents then please let us know.



### LADIES

The club existed for nearly a hundred years without lady members but in 1959 the stiff upper lipped gentlemen relented and allowed ladies into the clubhouse, but not the bar – that was 5 years later. It wasn't until the late eighties when a lady who was not allowed to play snooker threatened to report the club to the authorities, that women were finally allowed to pick up a cue.

In 1967 the club had its centenary and a booklet was produced talking about the first hundred years. Copies of this are still available for perusal.

Even today, the three beautiful snooker tables remain as true as ever. There are stories about characters such as Jimmy White, Steve Davies and Eddie Charlton adorning the club. The story of how Rolling Stone, Ronnie Woods, was banned by the steward is legendary. Going farther back in





time the snooker stars Fred and Joe Davies came here to help raise funds as part of the war effort.

The club soldiered on through the turn of the century; probably its most difficult period when no matter how hard the Committees tried, they found the going tough. Closure was getting ever closer and luckily some monumental interventions turned the tide. The introduction by NENG of three-monthly farmers markets opened up a new world, allowing the locals to see what treasure lay on their doorstep. In 2014 Sport England awarded the club £50,000 and disabled access was achieved with the introduction of new pathways and an outside lift.

In 2017 the club celebrated its 150th year with a week of celebration and jollity, including a match against the oldest bowling club in Sheffield - Hallam Proprietary Club based in Walkley. Players and supporters donned original gear such as top hats and breeches and Nether Edge won – of course!

Various new interest clubs have started out including the thriving art club, Scrabble club and book club. The Wednesday night Nether Edge Folk Club started in 2010 after moving from the Holly Bush on Rivelin Valley Road. This talented group of people come along every Wednesday evening at 8pm



without fail. The music is traditional and varied – experienced or a beginner, all are welcome to play or sing. If you fancy popping in sometime you will be made to feel very welcome.

The bowling club is offering a chance to buy a memorial plaque for members that have passed away. This can be a plaque on the wall, a bench with a plaque or a tree planted in their memory. If you know of anybody who was a former member don't hesitate to contact the club for further information.

*If you have been interested by anything in this article and need more information please contact [richardtaylor635@hotmail.com](mailto:richardtaylor635@hotmail.com) or [peterengland@blueyonder.co.uk](mailto:peterengland@blueyonder.co.uk)*



## Music on the Edge

The earliest known recording of a song performed recently at the Nether Edge Bowling Club, "Down to the River to Pray" dates back to 1867, the year in which the club was established. This is an example of the eclectic sounds that can be picked up floating across the green on a Friday night by a discerning ear. Folk, both traditional and contemporary, country, blues, Americana, rock and pop and the occasional homage to the more distant past can all be heard.

Friday night music as we know it today dates back to 2015 when the club was looking to fill the void left by the demise of the one time popular cabaret evenings. Although the club had dabbled in live music before then on an occasional basis, Club President at the time Richard Taylor and Secretary Michelle Pieprzak brainstormed the idea of promoting more regular events for the benefit of both members of the club and the wider community.

The most memorable of these early gigs was by a five piece band from San Francisco, Blind Willies, and is still talked about today by those who were there and not least by Richard who put them up at his house as part of the deal.

In those early years the club entertained many artists from overseas, mainly from the USA and Canada but more recently have concentrated on a more local pool of talent. This includes the legendary John Reilly (Boy On A Dolphin and Acoustic Angels) alongside co-writer and keyboard player, Lewis Nitikman; Julian Jones (Acoustic Angels), Julia McInally, Nicola Farnon and Jack T Harper to name but a few.

Even Richard Hawley turned up one night but could not be persuaded to sing. He was there to see his harmonica player, the incomparable Clive Mellor playing in the Stevie Williams and the Most Wanted Band, as talented a group of musicians as you are likely to see anywhere.

*To find out details of upcoming events, visit the Nether Edge Bowling Club Website, [www.nebc.uk](http://www.nebc.uk) and for tickets contact Michelle, on [michellepieprzak@hotmail.co.uk](mailto:michellepieprzak@hotmail.co.uk)*

# A Big Year for South Yorkshire's Largest Grant-Giving Charity

Andy Kershaw

A grant-giving charity, which has given over £2m in community grants to more than 300 groups in the past year across South Yorkshire, have their Chief Executive and Chair of Trustees residing in Nether Edge.

South Yorkshire's Community Foundation (SYCF), based at High Green in Sheffield, was set up in 1986 to work with philanthropic donors, businesses, and local stakeholders to support vulnerable people in the most marginalised communities in South Yorkshire.

Professor Chris Booth-Mayblin, became Chair of Trustees in 2021, after retiring from her post as Dean of the Sheffield Business School and Pro Vice Chancellor at Sheffield Hallam University.

Chris says: "Community grant funding makes a difference to people's everyday lives and working with a wide range of groups, it's clear to see the passion they have to make our communities better.

"Also, to help groups in obtaining funding, South Yorkshire Funding Advice Bureau, which has been part of the Foundation since 2013, provide training, funding advice and support to community organisations across Barnsley, Doncaster, Rotherham and Sheffield."

Chief Executive Ruth Willis, also lives locally at Brincliffe Edge, says: "We give grants of up to £5,000 to small voluntary and community organisations which often have few paid staff and rely heavily on volunteers, and funding through our grants programmes helps support the most disadvantaged and vulnerable people across the county.

"This comes from the generosity of local donors helping to grow our endowment funds, as well as distributing large funds on behalf of

local and central Government, and local stakeholders and partners across the region."

Currently, SYCF is distributing community grants to help organisations supporting people with the Cost of Living Crisis, with initial funding of up to £5,000 whilst a joint-bid could result in up to £10,000 being awarded. To increase the financial support that can be given to local groups, people can give their energy bill rebates through an online fundraising page, which has raised £33,000 so far.

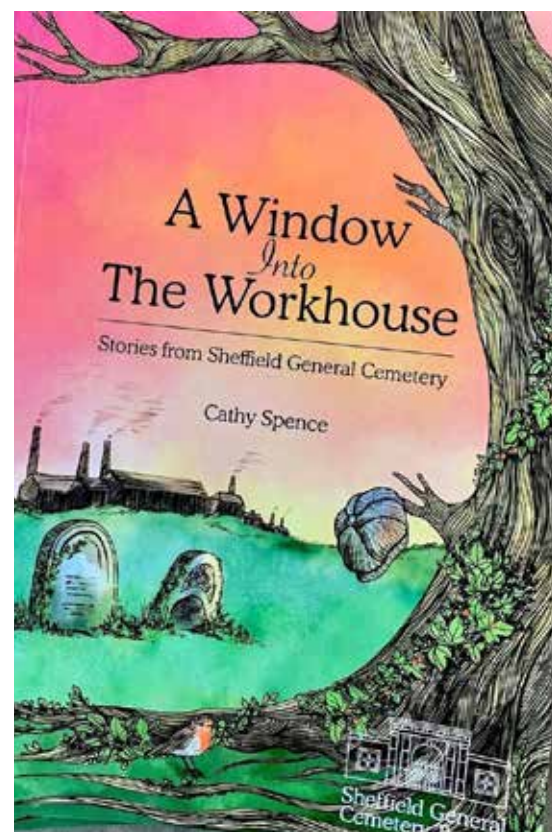
Community groups can apply for the Cost of Living Grants, or find out how to make a donation to the Fund, through the SYCF website: <https://www.sycf.org.uk/costoflivingsouthyorkshire>

During times of local and national need, SYCF have swiftly developed fundraising and grants programmes to help communities through challenging times. Flooding across South Yorkshire in 2019 resulted in the distribution of £1.4m to community groups, whilst during the Covid-19 pandemic, nearly 400 community organisations received a combined total of £1.5m, benefitting more than 300,000 people.

Chris, also a former Chair of Sheffield Mencap & Gateway, explains further how SYCF have developed the depth of support they offer, including a short-term mentoring opportunity for community group leaders.

"Mentoring for individual community organisations which face challenges or who want to develop their project or organisation, can do so through South Yorkshire Charity Mentors (SYCM).

"We have twenty-three people from the world of finance, health, manufacturing, the law, education and accounting among others, giving their time for free to help these groups," says Chris.



## New Books from Sheffield General Cemetery

"*A Window into the Workhouse*" written by volunteer Cathy Spence who has researched the many people whose last address was in a workhouse, often in the one situated in Nether Edge.

"*Made in Sheffield*" is a new book about Victorian cutlery and metal workers. It is written by volunteers Shirley Baxter and Jean Lees. This book tells the stories of over fifty people linked to the trade, their successes and failures.

The Cemetery are really pleased to say that three local independent book shops are stocking the books. Wickwire at Nether Edge, The Famous Sheffield Shop on Ecclesall Road and Next Chapter Books on Rustlings road.

There are more books planned; one is a rewrite of the book about women who are buried in the cemetery and another is a history of the Sheffield Confection Industry – there are over a hundred confectioners buried in the cemetery. Weston Park is hosting an exhibition about the Confection Industry to coincide with the book's publication

Finally a book is planned about Sheffield Activists buried in the Cemetery. This will include information about the Chartists and the beginning of the Trade union movement.





# And.... from the Art Club

It's always good to hear from our local artists and what they are creating. Two of them demand a special mention.

## PANNI LOH

Panni is a British Chinese artist and writer. Last year she started painting *"Fire Flower"* and the mystery of what the year would bring. What wasn't expected was her contracting Covid in July 2022. This unfortunately turned into long Covid.

Once energy began to return Panni began to paint and draw again including a painting *"Under the Raintree"* which was published in the Methodist recorder in the East South East Asian heritage month.

When Panni saw the competition for a very short story of ten words or under she entered and won first prize and here it is...

***Left Afghanistan a Dentist.  
Aisha cleans homes in Britain.***

Panni looks forward to more creativity this year including a short story set in Sheffield this will be a part of an anthology coming out in the spring.



Art images are by (in clockwise order from top left): Ivor Lawrence, Liz Timms, Denise Harrison & Panni Loh

## IVOR LAWRENCE

Ivor is a regular attendee at the Art club. He loves colour, shape, symbol and atmosphere whether painting abstracts, landscapes or still life. His work is versatile using all media.

He has always been interested in the romantic and expressionist views of the world. He has a deep sense of history and

how that shapes our place in the world today.

Ivor captures the sub –conscious view of the world which we all recognise- "a world which doesn't exist yet is always with us".





# X Martial Arts

X Martial Arts Sheffield and Common Ground Community Centre have joined forces to offer a free monthly class for men (aged 16+) to connect through martial arts.

The classes are being offered in a bid to encourage men to come forward and speak about their mental health. They offer a space to meet others, chat and leave feeling lighter, energised and more motivated.

The sessions will be striking based martial arts, including Boxing, Kickboxing and Karate training, and no previous experience is required to take part.

While the sessions are aimed at tackling the stigma around men's mental health, they are accessible to all men who would like to connect with others and become a part of a supportive, welcoming community.

Classes will be held in Nether Edge on the first Wednesday of every month. Please contact Craig Williams for more information.

Craig@xmartialarts.co.uk; 07877176160

## Lodge Studio Architecture & Interiors



Extensions / New Build / Refurbishment / Interior Design

### Creating better spaces.

[www.lodgestudioarchitects.co.uk](http://www.lodgestudioarchitects.co.uk)

07920512971 / Union St, Sheffield, S1 2JP



TALKING GIGS PRESENTS

# INESS MEZEL & NORA ABDOUN

## BERBER DUO

photo: Marc McGarraghy

**THURSDAY 13 APRIL 2023**

DRAMA STUDIO, SHEARWOOD ROAD SHEFFIELD S10 2TD

Tickets £15 / £12.50 online at [www.talkinggigs.co.uk](http://www.talkinggigs.co.uk) - Doors 7.00pm

## Bannerdale Osteopaths

### Happy Patient

### Google Review

I presented myself with painful feet after long walks. Not content to accept that it was a natural part of getting older, I am delighted to report that Pooja Guria set me on a path to a pretty speedy improvement within 5 sessions and one of those was taken up with a pulled back muscle (oh the relief!)

I like the app they use and did the homework Pooja set me (still do though not as often, and after 2 months was back to walking 15 miles across the Peaks without pain.

★★★★★





## Pets at Rest home euthanasia vet

I'm Rob, a local vet and resident of Nether Edge. You might see me out and about in my electric car, visiting pet owners in our community. I run an independent business that comes to your home to support with end of life care. Saying goodbye at home, ensures your companion feels safe and calm, surrounded by loved ones. You can find out more on my website or by using the QR code to visit my Facebook page.



07866 243673

[www.petsatrestvet.com](http://www.petsatrestvet.com)



## Welcoming Warm Space

**Every Friday**  
Starting Friday 24<sup>th</sup> March  
10am – 1pm

St. Peter & St. Oswalds  
Church  
2 Bannerdale Road  
Sheffield  
S7 2DL

# FREE

## Chair-Aerobics class 10:30am – 11:30am

Low intensity, seated exercise for any ability. Have fun whilst improving your strength, balance, and energy levels.



Come along to keep warm, save on energy bills, socialise, and have fun.  
**FREE** for everyone. No need to book, just come along.



- ✓ Charge your devices
- ✓ Games and Activities
- ✓ Free soup & roll lunch
- ✓ Refreshments



## St Andrews Psalter Lane Church Community Garden Party

**Monday 8th May 2023, 2 - 5pm**  
**Kenwood Hall Hotel, Kenwood Road, S7 1NQ**  
**Let's Celebrate !**

As Monday 8th May is the Coronation 'Big Help Out' day, St Andrews Psalter Lane Church is organising a Community Garden Party to which everyone is invited. St Andrews Psalter Lane Church is celebrating the 25th anniversary of its establishment as a Methodist – Anglican partnership and, as you might also be aware, we have been working hard to raise funds to carry out repairs to the Spire of the Church. This is a great opportunity for us to join in a community celebration of our 25th Anniversary, the spire repair and the coronation of King Charles III.

The Mercure Kenwood Hall Hotel has very kindly offered the use of its terrace, dining room and grounds for a Community Garden Party to be held. Entry will be free of charge. Cream teas will be served at a discounted price and other food and refreshments will also be available. There will be entertainments for all ages, hopefully including music and dancing.

We invite you to join in the fun!

## St Andrew's Psalter Lane Church

### 25th Anniversary Appeal

### Emergency Spire repair



**The spire needs urgent repair.**  
**If it is not repaired, it will become unsafe.**

***The building would need to close.***

Scan for more  
information



Scan to  
donate



[www.standrewspsalterlane.org.uk](http://www.standrewspsalterlane.org.uk)

# WHAT'S ON

## in and around Nether Edge in April 2023

### Union Hotel

Union Road, Nether Edge

The popular **Monday Night Pub Quiz** starts at 9pm. All welcome.

**Wednesday 5th April.** 9pm monthly **Pop Quiz**. Union Hotel, Nether Edge. Get there early to get a seat.

### Café #9

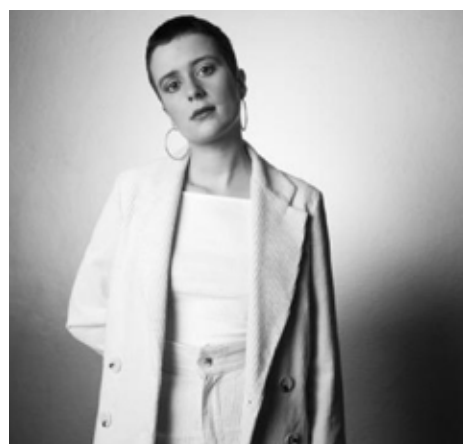
9 Nether Edge Road S7 1RU

**Sun 2nd April.** An evening with **Gideon Conn**, known for effortlessly blending acoustic folk and hip hop.

**Wed 5th April.** **Luke Jackson** is a singer-songwriter who has been nominated for Radio 2 folk award.

**Thur 6th April.** **Old Spot** featuring Joe Danks and Rowan Piggott, expect foot stomping old-time music on fiddle, banjo, gourd banjo and guitar, Appalachian style.

**Thur 13th April.** An evening with **Louis Brennan**, "a master storyteller with a voice like rolling thunder". GQ.



**Fri 14th April.** March is the project of singer-songwriter and multi-instrumentalist **Kitty O'Neil**, whose performance transcends the borders between, folk, alt and indie music.

**Sun 16th April.** **The Ocelots** are twins Ashley and Brandon Watson originally based in Wexford, Ireland. Their own music is

pursuing in the direction of Bob Dylan and Simon and Garfunkel.

**Thur 20th April.** **Robin Joel Sangster** is a singer-songwriter whose vocal style has been likened to Paul Simon and Neil Young.

**Fri 21st April.** **Me For Queen, Samantha Whates**, a gifted songsmith with haunting melodies that reveal character beyond her years.



**Sat 22nd April.** **Bronwynne Brent**. Born and raised in the Mississippi Delta, American roots song-writer who has the kind of stop-in-your tracks voice that sounds like Southern sunshine. Tickets £16.50.

**Sun 23rd April.** **Mim Suleiman**, described as fiery, electric, charismatic, and vibrant Mama Africa of Modern Era. Tickets £16.50.

**Mon 24th April.** An evening with **Hyuk Namkoong**, a classical pianist from South Korea. He will be performing Goldberg Variations by J S Bach.

**Sun 30th April.** An evening with **Ewan Macintyre Band** who mix all the appealing sounds of Celtic groove, American folk, and stripped back-soul.

*All performances start at 7.00pm and tickets from WeGotTickets are £13.80 (unless specified separately) which includes booking fee and byo/corkage fee should you want to bring alcohol.*

### Byron House

Nether Edge Road, S7 1RU

**Quiz night every Sunday** at 9.30pm. Cash prizes to be won.

### Sheffield General Cemetery

**Sat 1st April 10.30-1pm.** **Our Wild Cemetery: Nature-allied Writing Workshop** with Dal Kular. A safe workshop space for women and people who identify as women. *Tickets £6.00-£8.00 from Ticket source. This is FREE to women who are refugees or asylum seekers, no need to book just turn up.* The Samuel Worth Chapel, S11 8NT.

**Thur 27th April 8.00pm.** **Dead Film Society #01 – Phantasm** (1979). Don Coscarelli's cult horror film, 'A fusion of surrealist imagery, outlandish plotting and good old-fashioned scares' in the Samuel Worth Chapel. *Tickets £8.50*



**Sat 29th April 8.00pm – 12.30pm.** Shez Presents ... **Jazz Hot Six**, who play everything from early Manouche swing through to the bebop era of the early '50s and beyond. *Tickets £10 from Ticketsource, no tickets on the door.*

*For further information about events contact sgct@gencem.org .*



## Abbeydale Picture House

387 Abbeydale Road S7 1FS.

**Sat 15th April 8.00pm. Non Canon**, stage name of Bristol-based songwriter Barry Dolan, and Sheffield based poet Suzannah Evans perform at The Fly Tower. Tickets £7.70 from Ticketsource.

**Sat 15th April 7.00-9.00pm. Single Malt Whisky Tasting experience** with former Islay Distillery Manager, David Wood.- Picture House Social. Tickets £27.80. Eventbrite.



## Lotte on the Edge

**Sun 22nd April. Union Road Street Market** with A Caribbean atmosphere and delicious food and drinks.

## Lantern Theatre

S7 1NF

**Sat 15th April 7.30 pm. An Audience with Scott Doonican.** As the charismatic frontman of the UK's hardest-working comedy band, 'The Bar-Steward Sons of Val Doonican,' Scott Doonican is a debonair and theatrical performer with superb hair and more style than you could shake a Milan catwalk at. £17.50 + £1.22 booking fee.

**The Antics Sat 22nd April 2023 7:30PM.** The Antics eagerly return to The Lantern Theatre for an evening of totally improvised comedy. £7.50 + 52p booking fee.

## Nether Edge Folk Club

at Nether Edge Bowling Club

**Every Wednesday 8.00 - 10.30 pm.** The Nether Edge Folk Club welcomes everyone; singers, players and listeners

No admission charge but people are asked to contribute £2 except on 19th April when we have visiting musicians. (See below)

**Wednesday 19th April 2023, 8:00pm Skinner & T'witch** A Leeds based duo performing folk, flamenco and theatre style songs, with driving rhythms, intense harmonies and inspiring lyrics.

Tickets: Online tickets £8



## Nether Edge Bowling Club

**Fri 14th Apr 7:30 - 11:00 pm The Art of Simon** Lose yourself in nostalgia as Bryan and Jeremy perform the classic hits of Simon and Garfunkel.

**Fri 18th Aug 7:30 - 11:00 pm John Reilly and Lewis** performing Billy Joel

**Fri 21st Apr 7:30 - 11:00 pm Julia Waldron and Bryan Day** A new collaboration of acoustic folk and Americana, featuring original songs and well chosen covers.

**Fri 28th Apr 7.30 - 11.00 pm. Bapchids** British honky tonk band. If you love Hank Williams, Bob Willis and western swing delivered by the voice of an angel, powered by dynamic double bass and graced with fiery fiddle and lyrical lap steel then this is your show.

## Carterknowle Methodist Church

**1st April 11.00 am - 12.00 pm Easter Fayre.** Free admission.

## Common Ground

**Friday 21st April 12.00 - 2.00 pm Ammi's Kitchen Community Lunch.**

Just turn up. All welcome men, women and children. Pay as you feel. Free if on benefits.

**Friday 28th April. Ammi's Kitchen Takeaway /delivery.** Pre-order on [www.ammiskitchensheffield.org](http://www.ammiskitchensheffield.org) Pick up 3.00pm - 6.00 pm at Common Ground.

## Sheffield Botanical Gardens

**Sat 13th May 11.00-15.00 and Sun 14th May 11.00-14.00. Plant Sale** by the South Pennine Group of the Hardy Plant Society. Wide selection of both hardy and other plants available at very reasonable prices, grown by our expert members who will be on hand to give advice. To save the use of plastic, please bring your own bags to carry plants home. Also, on show in the Education Centre will be an exhibition of paintings by the Porter Brook Group, students of tutor Isabel Blincow

# ADVERTISING IN EDGE

Have you considered advertising your business in Edge? The magazine is delivered 10 times a year to over 900 households in Nether Edge. It is also distributed to local cafes, hairdressers, shops and other local businesses with many more potential customers.

Our rates start from £20 for an 1/8 page ad, to £80 for a 1/2 page. Discounts are given for multiple bookings. You would also be supporting Edge, and the Nether Edge Neighbourhood Group.



The images on the cover were seen on a boardwalk in Barbados celebrating the bus systems in Barbados - if they can get it right I'm sure we can do better - lovely colours and quirky images.

