



EDGE

Nether Edge Neighbourhood Newsletter
April 2022

£1.50 or free to subscribers

RYLE ROAD EDITION

INSIDE

**A Football
Club House**

The Jubilee

**Swifts In
Nether Edge**

**A Tree With a
Postcode**

Wickwire

**Kenbourne
Road & Grove**

What's On

*95 Montgomery
Road or the
Ryle Road tree?*
see page 10

www.netheredge.org.uk



The Nether Edge Neighbourhood Group was set up in 1973 with the following aims:

To improve the conditions of life especially of those living or working in the areas of Brincliffe, Nether Edge and Sharrow in Sheffield, without distinction of sex or race, or of political, religious or other opinions, by associating with local authorities, voluntary organisations and residents in a common effort to advance our education, to improve the environment and to provide facilities in the interest of social welfare for recreation and leisure time activities.

Company limited by guarantee
No. 07414080

Registered charity no 1139239

**Individual views expressed
are not necessarily those
of the group**

EDGE APRIL 2022

This issue of EDGE was edited by **Richard Taylor**
Design & artwork: Stephen Houfe (stephenhoufe@gmail.com)

If you want to contribute to the May edition, please contact the
EDGE Editorial Board – nengeditorialboard@gmail.com

NENG Committee Members

* indicates Trustee / Director

* **Ken Lambert** (Chair, Company Secretary & Membership Secretary)
32 Thornsett Rd S7 1NB. 07518 118789 ken.lambert227@gmail.com

* **Mazhar Hussain** (Vice Chair)

* **Howard Fry** (Secretary & Market) 20 Chelsea Road S11 8BR
howard.fry@icloud.com

David O'Connell (Acting Treasurer) 9 Cherry Tree Drive S11 9AE
nengtreasurer@gmail.com

Tayab Fayaz (Accountant)

* **Richard Taylor**

* **David Pierce** (Market & EDGE Editorial Board)

* **Nicky Erlen** (EDGE Editorial Board)

Vicky Phillips (Festival, netheredgefestival@gmail.com)

Helen Willows (Planning)

John Austin (History Group)

Ruth Bernard (EDGE Editorial Board)

Kevin Hickey (EDGE Editorial Board)

Pat Rogers, Minutes Secretary

Rosalind Watchorn

Kate West

Kevin Bonnet

Stephen Houfe

To contact
individual members
of the committee or for
contact details of the various
sub-groups, please go to the
NENG website :
www.netheredge.org.uk/

Nether Edge Neighbourhood Group Application for Membership/renewal

I wish to join / continue to support* the Nether Edge Neighbourhood Group (NENG) and receive the 'EDGE' magazine by hand delivery / by email* and enclose / have sent* my annual subscription of £

**Please delete as appropriate*

Name

Address

Postcode

Tel

Email

- Your contact details will only be used in connection with your EDGE subscriptions or NENG membership.
- The annual subscription for EDGE is £10 per household, commencing on 1st April each year. Any additional donation to the work of NENG is welcomed.
- Subscribers living outside our distribution area will only receive electronic copies of EDGE, or you can choose to receive EDGE by email by selecting this method above.

Cheques should be made payable to **NENG**, but please bear in mind that everyone in NENG is a volunteer, so we would far prefer to receive payment by Standing Order or by bank transfer (Sort code 30-97-51 A/C 36208368 NENG), as this greatly reduces the administration burden on both your local EDGE distributor and on NENG itself. Copies of a Standing order form (you can alternatively set one up online) to send to your Bank are available from ken.lambert227@gmail.com whom you should advise when you have set up a standing order or made a bank transfer so that records can be updated.

Signature

Date

As a local resident/ supporter of NENG, I also wish to become a full Member of NENG, a company limited by guarantee, which entitles me to full voting rights at the AGM, receive regular copies of EDGE and fully participate in its activities. In the unlikely event that the Company has to be wound up, I agree to pay the sum of £1 towards its debts if asked to do so. I understand this liability will continue for one year after I cease to be a member of the company.

PLEASE NOTE: Should you prefer **not** to become a full member of NENG you still can be just an EDGE subscriber by deleting the section in italics above. This entitles you to receive copies of EDGE but no entitlement to vote. The annual subscription is the same.

COMMUNITY SPIRIT

or how to live with those pesky neighbours

Richard Taylor



Like it or not during the past two unpredictable years we have all come to know our neighbours more closely,

Some would say that they are glad to have our freedom back but I would like to think that the majority have enjoyed the security and friendship of being part of a Community group.

Early in lockdown when we were all confined to barracks our small row of houses on Ryle road set up a Whats App group. Rules were laid down about not abusing the airways but it was there for a contact if needed. Help was offered to houses that were isolating and without knowing it we created an instant Neighbourhood Watch Group without going through all the formalities of meetings.

Lost parcels were soon located and instances of illness, broken down cars and being locked out of the house were rectified at the press of a button.

People posted ideas about parties and very gingerly we all emerged for a WW2 party and sang jolly songs two metres apart. It's so easy to request a road closure for the afternoon.

Latterly members of the group have bought Swift boxes and had a community painting of the most unloved garages on our road. Plans for a Jubilee party with maybe a tree planting are under way.

I must say that we aren't the first to show this neighbourliness, many roads in Nether Edge are far more advanced. Kenbourne road for instance are well known for gardening initiatives and

legendary table top sales. I love their fun filled article inside this edition.

What does inspire me is that we on Ryle Road are in a better position to face the inevitable changes and challenges that will happen in the next decade. Our Joint Voice about issues such as "on-street parking" and traffic movement will hopefully have some credence. Could we for instance have a Community car and a secure place to park our bikes?

This edition of Edge is not about our road it is about the people of Nether Edge. I hope that it inspires other roads to set up Whats app groups and maybe edit an edition of Edge.

We have enjoyed writing it –we hope you enjoy reading it.

Nether Edge Village

We all know that living in the Nether Edge is fantastic but has the secret got out of the bag?

This year has seen a huge rise in the value of local houses which are now for sale for over a million pounds. Who would have predicted this 30 years ago when all the large mansions were rapidly going into decay.

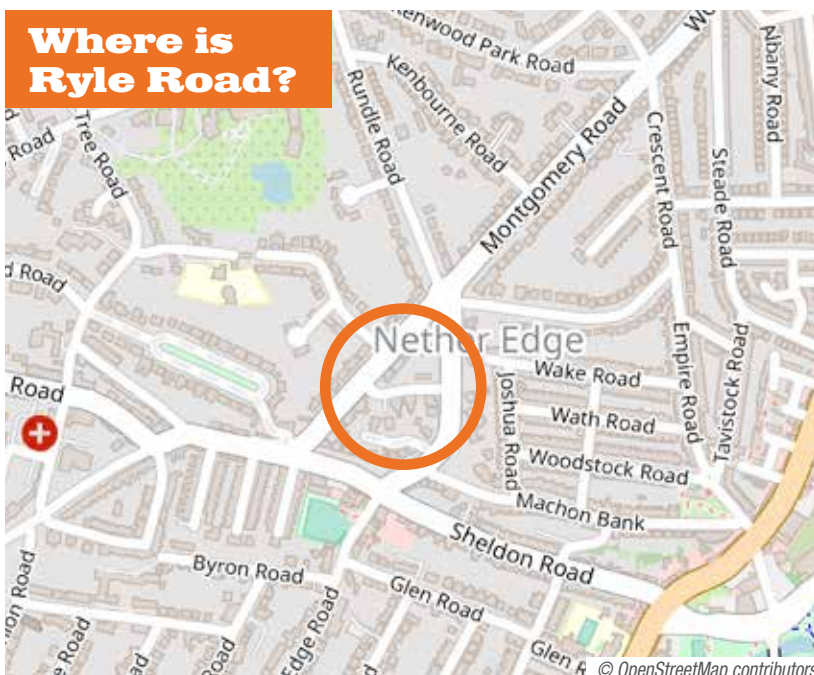
I personally love the idea of calling our community "Nether Edge Village "

What do you think?

A date for your diary: Open Gardens, Sun 19 June

Please make sure that you make time to visit all the beautiful gardens in Nether Edge. Last year we had up to a dozen open to the public but we would welcome more. If you are interested in opening your garden please contact howard.fry@icloud.com

Where is Ryle Road?



CONTENTS

| | |
|---|----|
| A Football Club House | 4 |
| The Jubilee | 5 |
| History Group | 5 |
| Parking | 6 |
| Swifts In Nether Edge | 7 |
| They Lived In Ryle Road a Hundred Years Ago | 8 |
| Living In Nether Edge | 10 |
| A Tree With A Postcode | 10 |
| Wickwire | 11 |
| Kenbourne Road & Grove | 12 |
| What's On | 14 |



A FOOTBALL CLUB HOUSE

Roger Adams

We bought 13 Ryle Road in 1979, from Harry and Brenda Trent, who had themselves bought it in 1971 from Sheffield Wednesday FC. At the time, it was common for football clubs to own houses for renting to their players, who were not especially well paid back then.

Our house had been occupied by Jimmy McCalliog, one of Wednesday's most famous post-war players, who joined them from Chelsea as a teenager in 1965. The next year, McCalliog scored the first goal when Wednesday played Everton in the Cup Final at Wembley, a match that older Owls fans always look back on with mortification, as their team eventually lost 3-2 after going 2-0 up.

A friend at Bristol University had managed to get tickets for this match, so I was there, even though, at the time, Bristol was the closest I had ever got to either Sheffield or Liverpool. I've never been to Wembley since but I still have a vivid memory of Derek Temple scoring Everton's winning goal and of sensing the horror of the Wednesday fans at the end he was running towards, as they realised what was about to happen.

McCalliog stayed with Wednesday for four seasons before moving on and playing for a number of other first division clubs as well as Scotland. He and his wife now run a B&B in Ayrshire. When we had the house re-wired a few years ago, 'Grapevine' contacted him and he remembered his time at Ryle Road well.

A club house could sometimes be like a tied cottage, but McCalliog was well treated by Wednesday. He paid only £3 a week rent and was able to bring his whole family, mother, father, two brothers and a sister, to live at number 13. In addition, Wednesday found his father a job as a motor mechanic and one of his brothers became an apprentice with the club.

Living in number 11 at the time, were Os and Effie Green and lodging with them were newly married Ivor and Dorothy Green. Os was Ivor's great uncle. Ivor and Dorothy eventually moved into their own house at Intake but returned, with their daughter,

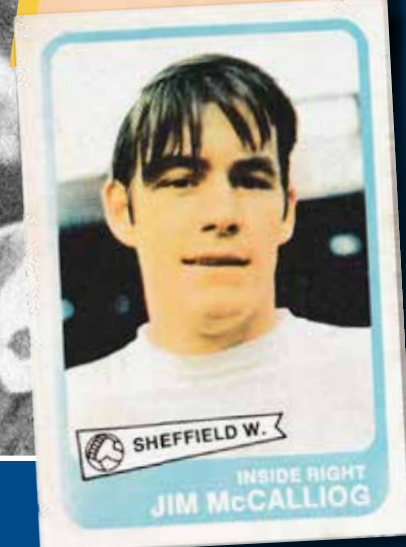
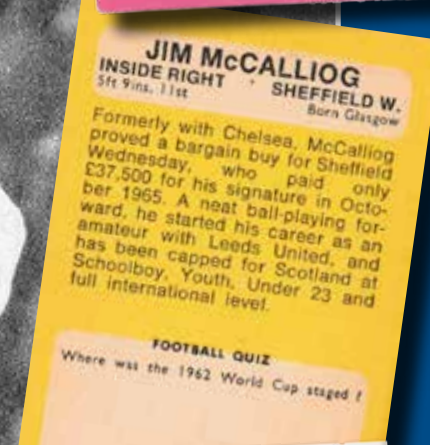


Sheffield Wednesday forward Jim McCalliog celebrates after scoring against Everton, in the FA Cup Final, at Wembley (May 1966)

Emma, when Effie died and saw Os through to his 100th birthday.

Os and Effie often talked about the McCalliogs and Ivor and Dorothy, both Wednesday fans, had fond memories of the family. Jimmy would get them tickets for matches and they especially remembered the boys sunbathing on the roof of the lean-to shed in the spot in the back yard where our conservatory is now.

The only reminder now that this was once a footballer's house is the concrete foundation, taking up half the garden area and too thick to dig up, laid for the garage for Jimmy's sports car.



EDITOR'S NOTE: Being a 17 year old Wednesday fan at the time I followed the Owls to every away cup match visiting Newcastle, Huddersfield, Blackburn and then on to Villa Park for the semi final against Chelsea.

Like Roger I was at Wembley on that upsetting day -2-0 up with 20 minutes to go and losing 3-2. An Evertonian in the tube quipped "Everton for the Cup and Wednesday for the middle of next week" - how that statement has come to haunt me over the years.

Machon Bank Rd - a country lane into a main road

John Baxendale

Here's a trivial question: Why does Violet Bank Road begin with no's 3 and 4 – where are 1 and 2? And what are those oddly unfinished gable ends facing Machon Bank Road? The answer is the same as Howard Fry's in the February EDGE – too many cars, but 80-odd years ago. In 1923 there were more bikes than cars, but in the 1930s the tide of motor vehicles hit the roads and streets: a million by 1930, twice that by 1938. Congestion mounted, casualties were horrific, and road widening, in the city centre and the suburbs, became the hot topic of the day – as did rows about the cost. In 1934 the motor bus replaced the Nether Edge tram, squeezing its way round to the left from Montgomery Road to Moncrieff Road where its terminus was: only on visiting days did it turn right to the Hospital. Machon Bank Road was an ancient country lane around which a modern suburb had grown up, and it was now dangerous and congested. Some wanted a roundabout – with public convenience! – where the traffic lights now are, but in 1935 the Council voted to contribute £3,000 to widen the road. This didn't happen until 1938, when 1 Violet Bank (formerly a grocer's shop) and 2 (where a plumber plied his trade) were compulsory purchased and demolished, along with the old tram depot wall and one of the tram sheds. The stretch between Violet Bank Road and Barker's Road was nearly doubled in width, a bit of the Montgomery Road corner lopped off to make the turn easier, and a traffic island added. Of course, if you look at it today more than half the extra width gained is now occupied by parked cars. But we never learn – if you appease the car, it always wants a little bit more.



1894



2001



NENG AND THE JUBILEE It's time to celebrate

The Queen's 70th Jubilee will be commemorated over 4 days from June 2nd to June 5th. Such celebrations are a well - established tradition (<https://www.royal.uk/history-jubilees>) to mark the life and reign of a Monarch.

The official celebrations during the four days of celebration include the Trooping of the Colour on Thursday 2nd June followed by the lighting of 1500 beacons throughout the United Kingdom in the evening. The following day a Service of Thanksgiving will be held in St Paul's Cathedral and then, on Saturday 4th June, there will be a whole day Party at the Palace where the BBC will stage and broadcast a special live concert from Buckingham Palace that will bring together some of the world's biggest entertainment stars to celebrate the Queen's reign. On Sunday 5th June the Palace and Parliament are encouraging people in communities throughout the country to join in the Big Jubilee Lunch by organising their own street parties. In London there will be a Platinum Pageant with 'artistic performers, dancers, musicians, military personnel, key workers and volunteers who will unite to tell the story of The Queen's 70 year reign in an awe-inspiring festival of creativity'..

NENG is fully supportive of the celebrations although it will not be organising any local events as we are aware that a growing number of groups are already planning events to mark the Queen's Platinum Jubilee. So, we'll do our best to put bunting out where we can and perhaps we'll plant a tree or two as part of the Queen's Green Canopy initiative. But what will you do? EDGE would like to know. If you are planning a street party or other celebration please let us know and we'll help however we can. EDGE will play its part to mark the Jubilee in Nether Edge. Let's have as many parties across Nether Edge as we can, parties that will be remembered by us all, particularly children, until they are grandparents. Watch the EDGE to be kept up to date with what's going on.

Let's have a party

Let's talk about...

PARKING



In recent editions of the Edge there have been comments on traffic and parking on Brincliffe Edge Road, which got me thinking about parking. After spending the last two years walking around the streets of Nether Edge during lockdown(s), I have become more aware of the pedestrians' perspective. It appears that people parking cars are getting more inconsiderate. It's not just the odd car parked on double yellow lines any longer, suddenly it seems that parked cars are making many of our pavements impassable.

While most cars parked on the streets leave space for pedestrians there does seem to be an increasing tendency for cars to be parked fully on the pavement (more than just a couple of wheels on the kerb to create more space on the road). Now there are stretches of our roads that have a number of cars parked bumper to bumper with no wheels at all on the road. This has been outlawed in some towns (it's been illegal in London for 40 years) and there are rumours of laws to prevent parking

on pavements being brought in across the country.

There are now some roads in Nether Edge that are impossible to navigate without having to venture onto the road. Glen Road can be particularly difficult if you wish to get from one end to the other by only using pavements. There is one section with an overhanging hedge taking out half the pavement, and parked cars taking over most of the rest. This is just metres away from a school. Parents and carers, many with pushchairs - all with young children going to school - have to navigate these hazards. And with changes to road access outside the school at the start and end of the school day, more car traffic is likely to be pushed further up Glen Road.

Another example is the area by Ryle Road - the daytime parking on Moncrieffe Road. Whether it is city centre commuter parking pushed out to Nether Edge by other parking zones (much of it is by the bus stop to town); or parking generated by the school and nursery

on Moncrieffe Road, there are cars parked bumper to bumper during the day - most 50% on the pavement. This road is a major bus route in our area, there are often queuing cars backed up from traffic lights around a bend and there are numerous junctions... And there are also the school and the nursery! There are no parking/waiting/dropping off restrictions around these busy buildings. There are no zig-zag restrictions - just parents with small children opening car doors, crossing the road and minibuses dropping off pupils.

We must also consider people with disabilities. I hate to think how wheelchair users are able to use our pavements! There was much discussion during tree protests about how to engineer pavements around trees to enable passage for all. It seems a shame that having won that battle to make pavements accessible for all, we now have new hazards to address. Similarly visually impaired people need pavements without hazards to navigate, and should not be forced onto the road. It's not just inconvenient to some groups - it's a dangerous situation.

Unfortunately there is no deterrent for poor/inconsiderate/illegal parking in Nether Edge. Managed parking areas (Sharrow/Broomhall/Broomhill etc) have regular parking enforcement patrols. People parking illegally there know they will get a ticket. It's not the case in Nether Edge. There is no ticketing, patrols or enforcement in our area, so people know they can park anywhere with impunity. When was the last time you were at the Nether Edge shops and there wasn't a car/van parked on the double yellow lines?

Many of us are lucky in Nether Edge. We have many wide roads, a lot of the houses have off-road parking and, fortunately, we have (mainly) avoided the awful practice of parking on grass verges. But cars are getting bigger and more numerous and perhaps there should be some sort of plan, with enforcement, to control the parking before it gets too out of hand. We are maybe not at the point of having our own parking zone with one parking permit per household, but I would ask people to think about pedestrians, cyclists and other non-car users when parking.

But these are just one person's thoughts - let us know what you think (photos welcome)!

Housing Swifts in Nether Edge

Lynne Chapman

Last summer, I saw a post on Facebook about a group in S11 who were organising the installation of swift nesting boxes. I loved the idea of attracting these elegant birds to Nether Edge and asked if I could have one fitted. Unfortunately, the offer was only for S11 residents and Ryle Rd is S7. I thought they might stretch the point but, instead, they suggested I set up a similar group for our area. It wasn't really what I'd had in mind, but I decided to give it a go. Nether Edge Swifts was born.

Nicola in S11 set me up with the contacts I'd need. She told me about the national Save Our Swifts project and why it is important to help. Swift numbers in the UK are declining fast: in just 25 years, they have almost halved. Swifts love urban environments and have been nesting in the nooks and crannies of our buildings for as long as we've been erecting them. Unfortunately, new materials and building techniques make it impossible for the birds to gain the access they need. This, combined with the fall in insect numbers, presents a real threat.

Swifts live entirely on the wing: they eat, drink and even sleep in flight. The newly fledged birds, flying off to Africa for the winter, will spend at least two years in the air, only coming down when they are ready to nest. This is when they are looking out for cracks and holes under the eaves of our houses and, once established, they return each year. But as older buildings are renovated, those small openings disappear and swifts can no longer access their nests.

Which is where our nesting boxes come in. My first move was to use social media, and the NESST newsletter, to find potential interest in S7. Within a couple of weeks, 14 houses were signed up. My neighbours on Ryle Road were great: on our tiny road, 6 houses wanted boxes. Our boxes were hand made in the Peak District by the specialist company Peak Boxes, where Lester Hartman was really supportive. He gave us a 20%

discount and free delivery. Before I knew it, I had a pile of nesting boxes in my back garden! I coordinated two installation days with our fitter Jan Bullett (a contact from yet

another Sheffield swift group, in S6). Jan usually erects TV ariels but has become the go-to man for fitting swift boxes in Sheffield.

The ideal place for a swift box is high up, ideally 5 metres. Under the eaves is good, for additional weather protection. South facing walls are too hot – the box needs shade for at least some of the day. You need to site it away from branches or creepers that allow predators like squirrels, crows or cats to get in and the opening must be clear of obstructions: the swifts will fly directly in, at speed!

Swifts love to nest in communities, so some people ordered double-boxes, allowing more

than one family to nest with them. A swift box can even have a 'bat back', allowing bats to nest in a separate space in the back of the box. If you're interested, you can see all the variations at www.peakboxes.co.uk. Buy one through any Sheffield swift-box group and you still get a discount. I have now passed on the running of Nether Edge Swifts, but the project is ongoing. If you fancy a box, the contact for S7 is gemma.pearson@gmail.com or for S11: S11swifts@gmail.com

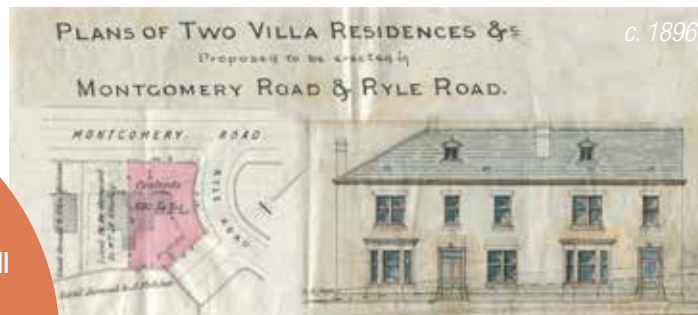
In Ryle Rd, we are crossing our fingers for the forthcoming nesting season. It will be lovely to have our own community of swifts and, once they are established, they will keep returning every year to nest with us, for around 15 years.



They lived in Ryle Road a h

I've always enjoyed David Olusoga's programmes about the history of houses, so when the 1921 census data was put on line I wanted to see who was living in Ryle Road a hundred years ago. I got a few surprises. I expected there to be families, but, as today there were some older people, and generally only two or three occupants. Of course, the older residents probably had children who had flown the nest.

c. 1890



"Where's Ryle Rd?"

asked the taxi driver. "Its the one with the tree in the middle of the road." "you should have said; we all know that!"

Why is there a tree in the middle of the road?

The council wanted to cut it down: thankfully a bill saving it from this fate came through just in time. Let's hope it will be a talking point for decades to come.

At **No 17** was John Kramer, aged 72. He was a retired pork butcher, and a widower.

Mr Kramer was born in Wurtenburg, Germany but was a naturalised British citizen. Also listed on the census form were 4 'visitors':

Charles Edmunds aged 27, a steel stamper, who worked for Thames Frith and Sons, steel manufacturers in Saville Street, his wife Florence Mary, aged 32, who had 'home duties', and their two young children, aged 2, and 9 months.

Since Mr Kramer was a widower in his 70s, I think it quite possible that this family of 'visitors' in fact lived there and kept house for him.

Painting by Ryle Road resident Lynne Chapman



At **No 15** was Mary Frances, aged 71. She was a widow, born in Kimberworth, Rotherham, and was listed as having no occupation. Living with her was her daughter, Hortice Ethel Francis, aged 41. She was single, born in Rotherham, and her occupation was given as Art Embroidery and Home Duties, and her place of work was at home.



In **No 13** was Edith Smith, aged 74. She was born in Islington, and her occupation was given as a private servant. She had no employer, and the only other occupant of the house was her servant, Ivy Scott. Ivy was born in Sheffield.

Numbers 11 and 13 Ryle Road

Looking at the residents of these houses, I wondered whether they were 'built to let' or to be sold. I have copies of the original documents for Nos. 11 and 13. They are not easy to decipher, being poor photocopies, and in some cases A3 sheets of hand-written, faint copper-plate.

It seems likely that these were the first houses to be built in Ryle Road since the lease of the land was signed between Abraham Fletcher, builder, of Washington Road, and the trustees of the will of

George Wostenholm in 1879. I have been told that Nos. 15 and 17 were not built until 1897. The lease was for 800 years, at an annual rent of £11.11.3d for 776 sq. yds of land between the entrance road leading from Ryle Road and Bank Close and the erection of 2 semi-detached houses.

These houses had to be finished to the value of £400 each and completed within 3 months. The 'tenant', or Abraham Fletcher, also had to keep in good repair all pavements, drains, gutters and other

hundred years ago



There is no census return for No 3 Ryle Road. Either it had not yet been built, or for some reason was not included in the census or was not transcribed for the digital version.

At **No 5** was John Arthur Swift, aged 34, born in Sheffield. He was a self-employed engineer and steel metal merchant, with his place of work given as Fargate. Also there was his wife, Minnie Eleanor, aged 31, their 2 children, a daughter, Mona, aged 4 and a baby son. Also listed is a visitor, Mary Cockayne, a widow aged 69 and a servant, Edith Dronfield, single, aged 32 who was born in Grindleford.

At **No 7** was John Charles Boeton Middleton, aged 52, a retired wine and spirits manager for Hay and Son and his wife Amelia, aged 5 and their 17 year old son, Charles. Hay and Son was a Sheffield Wine and Spirit Merchant that was in business from 1829 to 1970. The son, Charles, was a bank clerk at London Joint City and Midland Bank. His place of work was given as Gainsborough, but it seems very likely that this was the Head Office and Charles, like most of the other employees (117) worked at Sheffield branches of the Midland Bank.

At **No 9** was Robert Henry Aspinall, aged 42. He was born in Macclesfield, and was a civil engineer. He was employed by E Jacob Civil Engineers, and his place of work was given as London, but I suspect he actually carried out his work locally. His wife Caroline, aged 43, was born in London and had 'home duties'. Also living at No 9 was their servant Carrie Holgate aged 29, who was single, and her birthplace was Yorkshire.

At **No 11** was Robert Needham, aged 62. He was born in Sheffield, and was a self-employed draughtsman and manufacturing printer whose place of work was 57 Club Garden Road. These premises now house Regather Trading Co-operative. The only other occupant was his wife Maria, aged 64, who was born in Tinsley.



In the summer of 2020, after the first lockdown was lifted, we all got together along with nearby friends and family for a street party. The road was closed off for the afternoon, then dressed with balloons and bunting; music and games were provided, as was some delicious finger food and drink. It was another first, which hopefully will be soon repeated at the Queens jubilee.

appendages. The 'landlord' was the trustees of the Wostenholm estate and the premises were subject to a long list of restrictions. No kind of retail shop, workshop or manufacturing of any kind could be carried on, 'nor shall anything be done that can be regarded as a public or private nuisance or offensive to the neighbourhood.' On January 29th 1929 the lease was sold for £850 and the properties became freehold, then on 30th January 1929 Nos. 11 and 13 were sold 'in fee simple' (freehold) for £3050. The purchasers

were Gilbert Wheatcroft and Miss Edna Goodrich who later became Mrs. Gilbert Wheatcroft. In September 1936 Gilbert sold No 13 to his wife for the sum of £192.10s. and No 11 was sold to Margaret Brook. The two houses were now owned separately. But in 1921 Nos. 11 and 13 were still subject to leasehold conditions and were rented.

Living in Nether Edge

Janet McAleavy

Once people move to Nether Edge many decide to stay, and Ryle Road is fortunate to have residents who have lived on the road for over 40 years. I had a chance to chat to three of them about living here.

Marion and Roger explained that when they moved in 1979 it was difficult to buy a house and many people were being gazumped.

Marion: When we moved here, Montgomery Road was known as the hotel area. There were also quite a few bedsits (as we called them) for students or people working in the city and requiring inexpensive short-term accommodation. The demand for houses was high, the expectation was to bid over the asking price when buying.

I was surprised to learn that over 40 years ago people were having the same problems they have today linked to short supply of houses to purchase.

What drew you to Nether Edge?

It was a hub, easy to get to the city and the Peak District - it had a positive feel. In the 1980s bus fares were famously low in Sheffield and using public transport was actively encouraged, it was easy to get around. The air smelt good, we noticed the number of sparrows and other birds. When we thought about where to live nowhere else came close.

Joyce moved to Ryle Road in 1981 with her husband Mark. What were your first impressions of Nether Edge?

Joyce: It felt more lively than other areas of Sheffield. It was close to the city but had a spacious feel, no traffic or parking problems. We bought a big house. The aim was to have lodgers and animal sitters and that is what we did. Over the years lots of different people stayed and I never felt lonely.

When you first moved here, what did you think about the Ryle Road tree?

We liked the tree of course, it's an important landmark. Thankfully we haven't seen any accidents involving the tree but plenty of cars going round it the wrong way.

'The road with the tree in the middle' that is all you have to say, and most people know exactly where you mean.

How would you describe Nether Edge in a few words to someone who didn't know it?

Pleasant Victorian, interesting little corners, friendly place.

Leafy suburb, accessible and friendly.

What would you say is the biggest change that you have seen over these years?

Shops have changed totally, 40 years ago there were lots of shops and a wide range. There was even a night club called Turn-ups, opposite the Byron, where flats are now (pictured below). Literally everything on your doorstep.

Nether Edge has changed – there are new cafes, but the shops have changed dramatically. There was a great DIY shop, but the whole area has still got a buzz to it.



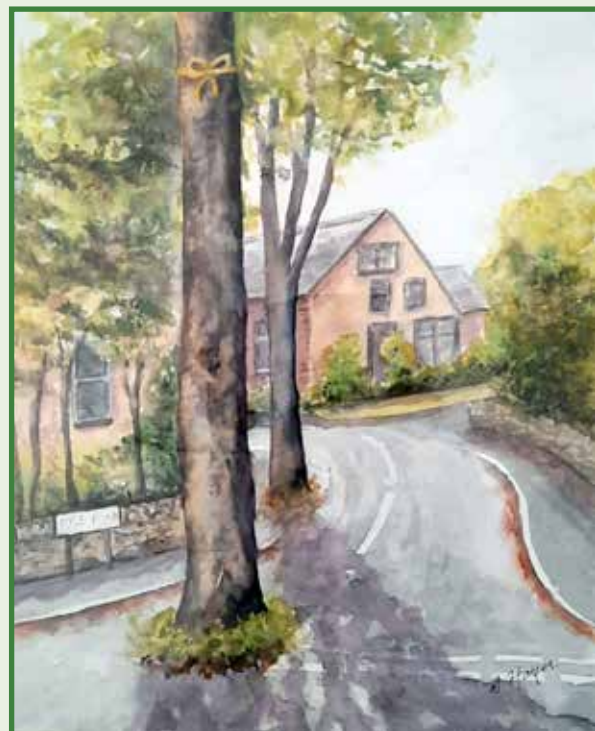
Is there anything that you would like to change

Better bus service to ensure that people of all ages can get into the city centre or where they want to go.

Traffic congestion and litter.

Thanks all for the quick insight into 40 years plus of Ryle Road.

Nether Edge of course has changed, but it still has something special, and all agreed that would make it hard to leave.



A tree with a postcode

Having come third in the poll for the most important tree in Nether Edge we decided to look for a name for the significant Lime tree that has stood at the entrance to Ryle Road for over 100 years. Is it to become the "Ryle Lime" or do its roots go even deeper.

Further research shows that it has its own postcode - 95 Montgomery Road S7 1HT and always receives a Christmas card from an unknown source.

Suggestions that this tree actually belongs to Montgomery Road stirred the locals and Ryle Road definitely wanted a share in the spoils.

So the outcome is that it's a semi-detached tree and needs a letter box and a two numbers on it.

95 Montgomery Road and 19 Ryle Road and is to be called 'The Tree House'

Watch this space



Painting by Ryle Road resident John Birks

History of the Wickwire Building

Kath Fry and Kay Phillips

Vicky has been a great supporter of the Nether Edge History Group, enthusiastically selling our books, walks leaflets and calendars. When we heard that she was interested in knowing more about the history of the shop and its neighbours we were happy to oblige.

Wickwire's building at 1b Nether Edge Road has always stood out from the other shops because of its quirky upper design and fancy roof finial. A century before it became 'Wickwire' the shop had been owned by the Holt family. It was a stationers and, from 1891, Nether Edge's Post Office. Postmistress Mrs Elizabeth Holt ran it for many years. The Post Office relocated to larger premises at 7b in the 1980s, only to be closed in 2014.

Zeds Wholefoods store, to Wickwire's right, was originally the cab office for the thriving Thompsons company. It not only ran a horse cab service but offered excursions as far away as Fox House, Owl Bar and Hathersage! It

later became Holgate's ironmongers and hardware store.

The shop to Wickwire's left (now the dentist's) was originally a draper's and ladies and children's outfitters. It was run by the two Misses Hubbard, known for always being dressed in full-length black bombazine dresses. It has also been a greengrocers, bought in 1977 by Neil Warnock, former manager of Sheffield United Football Club. He named the shop 'The Orange Bowl'.

The area at the corner of Nether Edge Road and Sheldon Road was originally the open frontage to Ashland House. For many years the shop built here was a tobacconist's and sweet shop. More recently it has been a florist's, art and craft shop and hairdressing salon.



Wickwire: 10th Anniversary

Vicky Coates

I bought Wickwire in April 2012, so this year is my 10th anniversary. I would like to say a big thank you to all my customers, new and regular. Last



year was my best Christmas in 10 years! Despite all the problems with the high street in general, Nether Edgers have always shopped locally and even more have joined the trend these last few years. The pandemic was a major reason, of course, but there also does seem to be a general move towards supporting smaller, local businesses.

Wickwire was originally opened by Dorothy Wickwire (hence the name) around 2000, and there were two more owners before I bought the shop.

I now sell stock from 33 local traders or artists (including the Nether Edge History Group), as my customers like to know that they are buying from people who could be their neighbours, and support the local economy at the same time. Locally made products include cards, jewellery, mugs, books, T-shirts, bags, candles and cosmetics.

I try to be as environmentally friendly as I can. I recycle my packaging and unwanted gift wrap with a company called Scrapdragon. I used Strip the Willow, on Abbeydale Road, for my new display units, made from reclaimed wood. The cards I sell are increasingly 'nude' - ie less cellophane wrapping, and I sell several eco-friendly products such as soaps, candles and beeswax food wraps.

To celebrate, my anniversary, I've got lots of offers going on such as a free Wickwire bag for customers who spend £20 or more. I will re-introduce my loyalty card for greetings card purchases (buy 5 and the 6th is free). I plan a raffle, which will be free to every customer who makes a purchase, and there will also be 10% off all purchases on 2 April.

I would like to say thank you to my parents, Kath & Fred, who, readers will remember, used to look after the shop on Mondays. They have now retired again! Also, thanks to my partner, Simon who, amongst many other things, looks after my DIY needs but can't be persuaded to use the till! I would also like to say that the other businesses and their owners - old and new - have been very supportive during my years on the street.

Watch this space for more new additions to the shop. For more information: Wickwire on Facebook and Instagram at Vicky_wickwire

Kenbourne Road & Grove

Howard Trott



Hi Readers! We would like to tell you about living on these two local streets. The first houses in Kenbourne Road were developed by Henry Brumby and other local builders from around 1898 added to in the early 1900s and again in the nineteen fifties, sixties and seventies. Near the top of the road, on the odd numbers side, was an orchard, from which, one of the oldest residents tells me, he remembers scrumping apples as a boy in the 1940s! He also told me that his late wife used to play tennis on a court on the opposite side where the large bungalow is today, probably in the 1950s. In the 1960s some of the larger houses were rented out by the owners, which often meant that older features such as fireplaces and decorative ceilings are still there today.

I'm sure our road is not unique in having the good community spirit which it has today; Nether Edge is a friendly and welcoming

place to live. Our Kenbourne streets have been revitalised over the last decade or so by the increase in young and growing families and the ease of communication brought about by the digital revolution.

The houses on the Grove have a slightly different feel. I don't know how it came to be chosen as a venue for the 1997 BBC garden makeover programme Gardening Neighbours with Charlie Dimmock and Diarmuid Gavin but it was a perfect fit for the brief. Only Sarah & Steve and Ray of the original 8 families still live there but the central communal garden is well maintained, with trees and shrubs from the programme, together with a commemorative plaque. I don't know how many of the rear gardens still retain design features from that time.

Kenbourne was well represented in the 2018 protests to prevent the mass felling

by Sheffield Council contractor Amey of the trees which give this suburb its character. 'Stop the Chop' posters appeared in many windows, and although support on the road was not 100%, I'm not aware of any major public clashes between residents. Those who were actively involved in our street patrol rotas and mass protests in nearby Kenwood Road got to know each other better.

During the 1990s there would usually be a short-notice low key

summer party on the Grove where we ate our own food, drank our own drink, listened to music



from an open window while the children played happily together. At least, that's my memory. Over the years this stopped happening. Then, in 2018, (fanfare please), enter Sian the Kenbourne Party Queen! She successfully applied to the Council to close the road for the day as part of the Eden Project Big Lunch. We had our first bistro-style party with shared food and drink and music by our own pop-up Kenbourne band, all on a beautiful summer's day. This was repeated the following year and rumour has it that something similar might be happening this summer too, though with respect to the range of opinions on the road it won't be billed as a Platinum Jubilee Party. Sian also organises our very popular Yard Sale.



We hope you enjoyed reading this and look forward to seeing you at the Yard Sale on Sunday 12 June.

PS: We want our WhatsApp group to be as representative as possible so if you live on Kenbourne Road or Grove and you'd like to join, please email me on h-trott@blueyonder.co.uk or drop off a note at number 25.

I asked Kenbourners to give examples of community spirit and acts of kindness on the Road and here are two typical examples of what they said:



Madhu: *This is a great community of caring and friendly but not intrusive neighbours. I love the chats about random things that at the same time offer a wealth of information ranging from tips for attracting bullfinches to your feeder to recommending good tradespeople. Also the practical things, the way neighbours go out of their way to help others, for example, looking after pets when away on holiday or doing a shared food shop. Plus the street parties, my first experience after living in Sheffield for more than 19 years! Oh, and one more: Getting first dib at books, furniture or plants that people may be getting rid of, particularly during house moves. I love living on this road.*



Holly: *Four years ago my wife and 18 month old moved in to Kenbourne Road from Hackney in London. We were a bit shocked (and suspicious!) of how friendly everyone was and shyly kept to ourselves until one very snowy afternoon when my toddler spotted another small child sledging down the road. That was the start of some amazing friendships and since then we've been on four holidays together, celebrated a wedding and welcomed five more children between us! I couldn't imagine living anywhere else now.*




This is how Kenbourne's Martin Dawes (ex Sheffield Star journalist) spends his retirement


If you see me in the street I'll probably be carrying a paper bag or a plastic box. Fruit hanging temptingly over a garden wall? I'll ask. I'm not filching but foraging. My food miles are on foot. This last year I've picked apples, blackberries, quinces and medlars and I've not yet left the street. If I do, I can find elderflowers, elderberries, rosehips, haws, poppy seeds, the occasional hazelnut, nasturtiums (for salads and capers), nettles (for beer), dandelions, cherries, damsons, plums and, right now, wild garlic. It's food for free and if neighbours let me scrump or forage in their gardens I'll happily hand back some of it as jams, jellies, sauces or chutneys. I'm keeping the blackberry wine for myself! Now if you'll excuse me I'm off to pick some wild garlic. You can find recipes on my food blog at www.dawesindoors.wordpress.com



Pets at Rest vet home visits

 [pets at rest veterinary care](#)

 www.petsatrestvet.com

 07866243673

 petsatrestvet@gmail.com

final farewells in familiar places



Bannerdale Osteopaths

"Really very good for my injury. Perfect recovery program and it works for me. Pooja is a wealth of knowledge and really pinpoints the areas that need work during each visit to help me to regain fitness."

James, Happy Patient, 2021



Bannerdale Osteopaths, 5 Machon Bank Road
Nether Edge, Sheffield, S7 1PE

0114 419 0173 | www.bannerdaleosteopaths.com

WHAT'S ON

in and around Nether Edge in April 2022

Nether Edge Folk Club

...meets **every Wednesday** at 8.30pm. Complete novices and experienced performers are all very welcome at the Nether Edge Bowling Club, Nether Edge Road, Sheffield S7 1RU.

For further information see website <https://www.nebc.uk/> or telephone 07763 932778.

Friday 15th April 7.30pm - **Dogfood**, a hot chunky mess of country, bluegrass, gospel, blues and Americana, *Tickets £8*



Fri 22nd April 7.30pm - **Jack T Harper** a hugely talented singer songwriter and musician who creates a unique sound that is soulful with a contemporary Latino vibe. *Tickets £10*

Fri 29th April 7.30pm - **Double Bill: Runaways** a band headed by one of the members of our resident folk club performing pop classics- you will be singing along. Supporting act, **the Glummer Twins**, David Harmer and Ray Globe, providing stand up spoken word comedy and music from the Beat Generation. *Tickets £7*

For tickets for these events contact Michelle on 07742 627 839 or email: tickets@nebc.uk

Union Hotel

Union Road, Nether Edge

The popular **Monday Night Pub Quiz** starts at 9pm. All welcome.

Wed 6th April, 9pm **Monthly Pop Quiz**
Get there early to get a seat

Common Ground Community Centre

Machon Bank, S7 1GR

Parent/Carer and Toddler Yoga sessions on Mondays 11.15. Term time only. *Contact rachym0909.com to book.*

Slow flow Mindful Yoga Mondays 1.00-2.00. Term time only. *Contact rachym0909.com*

Lantern Theatre

18 Kenwood Park Rd, S7 1NF



Sat 2nd April 7.30pm - **The Bar-Steward Sons of Val Doonican** provide comedy lyrics, on acoustic guitar, banjo, fiddle, mandolin, accordion, and other instruments. Side-splitting show which have brought smiles and belly-laughs to audiences across the UK. *Box office 0114 255 1776. This event is the new date for the 2nd Oct show that was postponed.*

Sheffield Cemetery Trust

Sun 3rd April 1.30pm-2.30pm - **History**

Tours. Ever wanted to learn more about Sheffield's Victorian history? Why not start with a fascinating guided tour of the Grade II listed historic cemetery. Meet the residents who shaped Sheffield's history, from Mark Firth and Samuel Holbery to the Cole Brother and George Bassett, and many more. *Contact sgct@gencem.org for updated information. Tel 0114 268 3486. Meet at the Gatehouse, Cemetery Avenue. Suggested minimum donation £5*

St Andrew's Psalter Lane Church

Sat 9th April 10.30-11.15am and 11.45-12.30pm - **Family Concerts, Tim Horton** (piano) performs for 0-5-year-olds and their grown-ups. With songs, dancing, listening as well as bubbles, percussion, props, and informal introductions, this is a fun and informal gig for adults and their children. Tickets, adults £9, first child free, additional children £2.50, under 1-year olds free. *More information: concertteenies.com.*

Picture House Social

383 Abbeydale Road, S7 1FS

Tues 12th April 7.30-10.00pm - **The Chris Arnold Experience** with support from **Tom Douglas and Aiden Pine**. 'Powerpoint comedian returns to Sheffield for the first time since his 2019 sell-out'. *More information Skiddle. Tel 01142581690.*

Fri 29th April 19.00-21.00 - **Single Malt Whiskey Tasting Experience.** Join us at the wonderful Picture House Social for an exclusive whiskey tasting with former Islay Distillery Manager David Wood. *Tickets £25+ booking fee £2.54, total £27.54. From Eventbrite.*

Café #9

Nether Edge Road, Sheffield, S7 1RU



Wed 13th April 7.00pm - **Cua are a Laois** based band with members, John Davidson, Shane Booth and Ros O'Meara. They call themselves 'Atlantean' a kind of folk and roots style which combines, Bluegrass, Appalachian, Americana, and a touch of psychedelic folk. *All Café#9 tickets from WeGotTickets.*

Heeley City Farm

Richards Road, Sheffield, S2 3DT

On the **2nd Tuesday every month** (Next meeting 12th April)
- Heeley City Farm's Dementia Department hold a Carers group for people caring for someone with Frontotemporal Dementia (formerly Pick's Disease). Carers Group meet from 6.30pm-8.30pm. For more information contact Lee on lee@heeleyfarm.org.uk or Andrew on andrew@heeleyfarm.org.uk or call 0114 258 0482.

Sat 23rd April-Sat 28th May - Bee Keeping Course. Six-week course starts on Saturday 23rd April and lasts for the following 5 Saturdays. Every session is 10.30am-1pm. Join our beekeeper, Nick whilst he takes you through the A-Z of keeping bees. £145 (plus booking fee) per person. To book a space go to Eventbrite and search 'Heeley City Farm Bee Keeping 2022'. For more information Tel: 079411182028. Email: nhorne@heeleyfarm.org.uk

Abbeydale Miniature Railway

Abbeydale Road South. Sheffield S17 3LB



Timetable for April 2022 - **Sun 10th and Sun 24th April**. Train rides are still only £1.50 each and there is no advance booking. Refreshments and ice cream will be available. The railway is open from 1pm until 5pm. For more information: sheffieldmodelengineers.com.

Meeresbrook Park Walled Garden

Sheffield Printmakers will be showing and selling their work at the following event. **Sat 30th April-Monday 2nd May**. 11.00am-5pm - **Exhibition and Print Fair**. 'Have a go' print workshops.



COMING SOON
NETHER EDGE OPEN GARDENS
 Sunday 19th June
 email howard.fry@icloud.com for more information



OPEN UP Sheffield Artists 2022

Artists' studios will be open on **30th April, 1st, 2nd, 7th & 8th May**. For further information go to: openupsheffield.co.uk.

Antonia Salmon, contemplative ceramic sculptor. Studio will be open for visits: **Sat 30th April, Sun 1st & Mon 2nd May**.

Studio location 20 Adelaide Rd, Nether Edge S71SQ. www.antoniasalmon.co.uk. Tel :01142 585 971, mob: 07512 231 995.

Andrew Walker, hand constructed contemporary vessels.

Studio will be open for visits: **Sat 30th April, Sun 1st, Sat 7th & Sun 8th May**. Studio location Works 57, Unit 5, 57 Chippinghouse Rd, S8 0ZF. Mob: 07796376800. andrewwalkerceramics.co.uk.

Paul Stockley, sculptor, mainly using concrete. Studio will be open for visits: **Sat 30th April, Sun 1st, Sat 7th and Sun 8th May**. Please contact to arrange visit: Tel: 01143 277 745, mob: 07545 352

NETHER EDGE FAIR

Support local independent makers:
 Art & Jewellery; Body & Bath;
 Crafts & Clothes; Eco & Charity;
 Food & Drink; Garden & Outdoors;
 Home & Toys

For Easter, Birthdays,
 Anniversaries, Every Day

FREE Personal Present Shopping Service
 available: jlallen1812@gmail.com

<https://www.netheredgefair.com>

(After website costs) every penny goes to charity

by Nether Edge Art Group



**"This splendid city rising up in terraces along the banks of the Dniepr river
has surmounted adversity." 1926 Osip Mandelstam**

Everyone here is doing something whether it be making donations of medical supplies, baby things, water, first aid etc in these days of Ukraine.



IN HER HANDS, BLACK TEA

She smiles the door open to our carriage,
feels the heat of the silver samovar
in the small corridor. We encourage
little moments to be real. People are sleepy.

A woman comes back to the car,
gives pears to us bought from the villagers.
They gossip, their lips silent under stars,
we watch from the carriage as visitors.

We go far off track, each of us bites
into the inviting flesh of the night.



Thursday 7th April, 6 to 8pm at Sharrow Community School

An opportunity to help by buying a picture or donating on the night.